

4

3

2

1

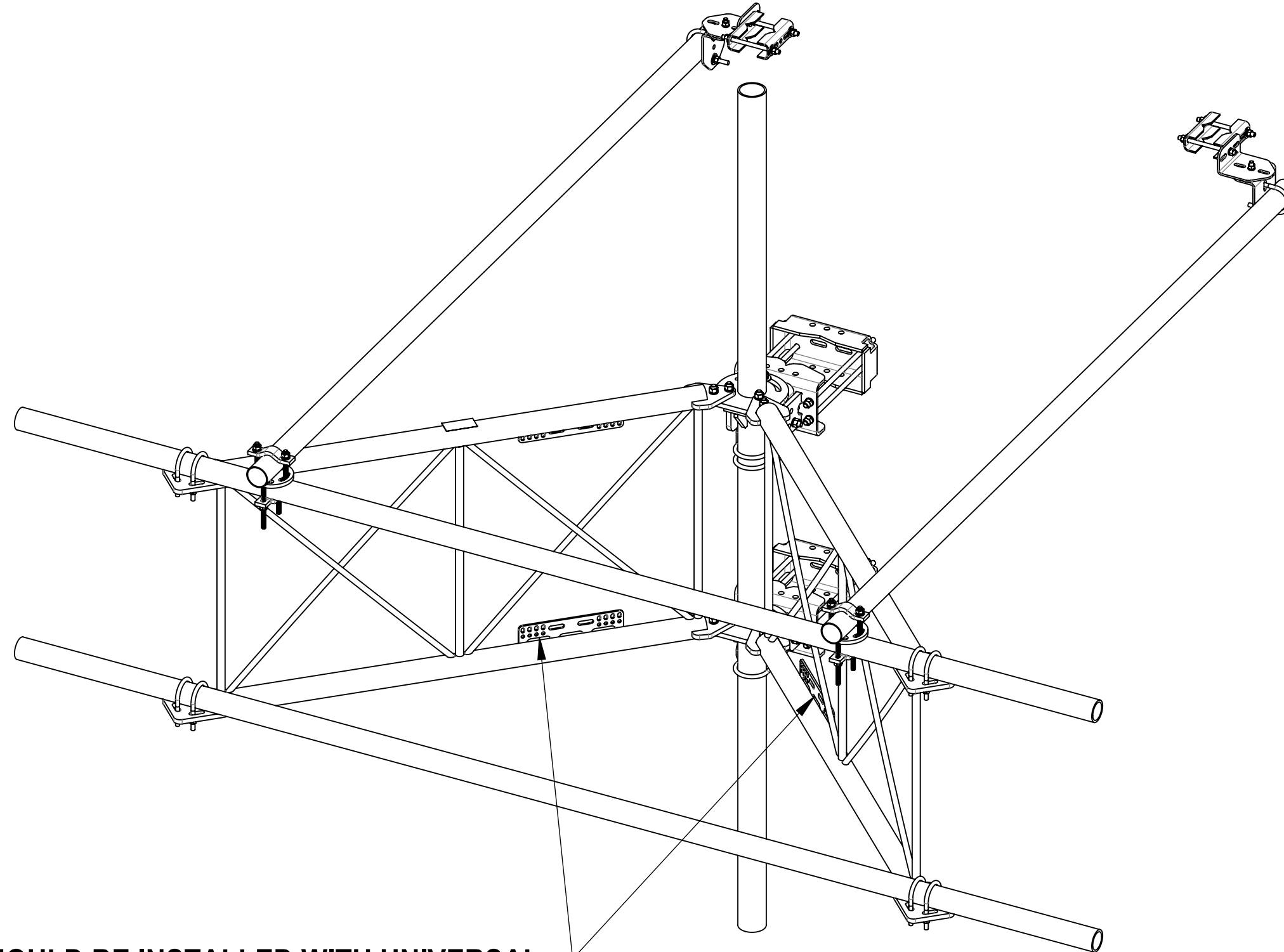
- 1.0 GENERAL NOTES
- 1.1 ALL METRIC DIMENSIONS ARE IN BRACKETS [X.X]
- 1.2 FOR PATENT INFO: <https://www.adwpat.com>

- 2.0 DESIGN NOTES
- 2.1 ANY HAZARDS OR OBSTRUCTIONS TO THE CLIMBING FACILITY AND SAFETY CLIMB MUST BE IDENTIFIED PRIOR TO INSTALLING THE APPURTENANCE. ADDITIONAL PRODUCTS MAY BE REQUIRED TO MAINTAIN THE INTEGRITY OF THE SAFETY CLIMB. DURING INSTALLATION, TEMPORARY AND/OR PERMANENT PRECAUTIONARY MEASURES SHOULD BE TAKEN TO PRESERVE THE CLIMBING FACILITY AND/OR SAFETY CLIMB.
- 2.2 UP TO 5.0° TAPER AVAILABLE ON MODELS THAT SUPPORT ADJUSTMENT


- 3.0 MANUFACTURING/SPECIAL REQUIREMENTS
- 3.1 TIGHTEN ALL BOLTS SECURING FLAT PLATES BY THE TURN-OF-NUT METHOD. TIGHTEN ALL U-BOLTS USING TURN-OF-NUT METHOD WITH ATTENTION TO LEAVE EQUAL DISTANCE AND EQUAL FORCE ON EACH LEG OF THE U-BOLT.

- 4.0 TEST
- 5.0 PACKAGING
- 5.1 PACKAGING SHALL MEET ANDREW REQUIREMENTS PER DOCUMENT IS-PL-3005.
- 5.2 PRINTED DOCUMENT TO BE PLACED INSIDE POLYBAG AND THEN IN SHIPPING CONTAINER.
- 5.3 EXTRA HARDWARE MAY BE SUPPLIED, BAGGED AND SHIPPED.


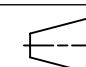
REVISIONS			
REV.	DESCRIPTION	DATE	APPROVED
A	INITIAL RELEASE	YMENG 20JUL23	YW1047 40174727CMO
B	UPDATED SADDLE MOUNT, ADDED SFG23100	YMENG 08OCT23	YW1047 40179448CMO
C	UPDATED SFG23180-00 TO ADD UNIVERSAL INTERFACE PLATES	RY1002 23JUL24	XK1001 40200655CMO



SHOULD BE INSTALLED WITH UNIVERSAL INTERFACE PLATES FACING OUTWARDS



ANDREW® an Amphenol company

TOLERANCES		SAP MATERIAL MASTER			
1 PLACE .X[X] ± 0.2[6.3]	3 PLACE .XXX[X] ± 0.060[1.5]	SFG23RHDXL-12-B			
2 PLACE .XX[X] ± 0.12[3.0]	ANGLES ± 2°				
FINISH		MATERIAL			
UNLESS OTHERWISE SPECIFIED DIMENSIONS ARE IN INCHES INTERPRET PER ANSI Y 14.5M-1994		NAME	DATE	SECTOR FRAME 12' FACE, NO AP	
		CE YMENG	20JUL23		
		RW YX1027	06/16/2025		
		AD YMENG	06/16/2025		
		RE YMENG	06/16/2025		
ECN 40200655CMO		SCALE	DOCUMENT NO.	SFG23RHDXL-12-B	
		1:32			
SIZE	Auth Group	INSL	MODEL	DRAWING	SHEET 1 OF 6
C			VERSION 04	STATUS RE	
			REVISION E	VERSION 02	STATUS RE
			REVISION C		

DENSITY		lbs/in³
MASS	766.45	lbs
VOLUME	2704.78	in³
SURFACE AREA	22459.56	in²
HEIGHT	120"	
LENGTH	150"	
WIDTH	120"	

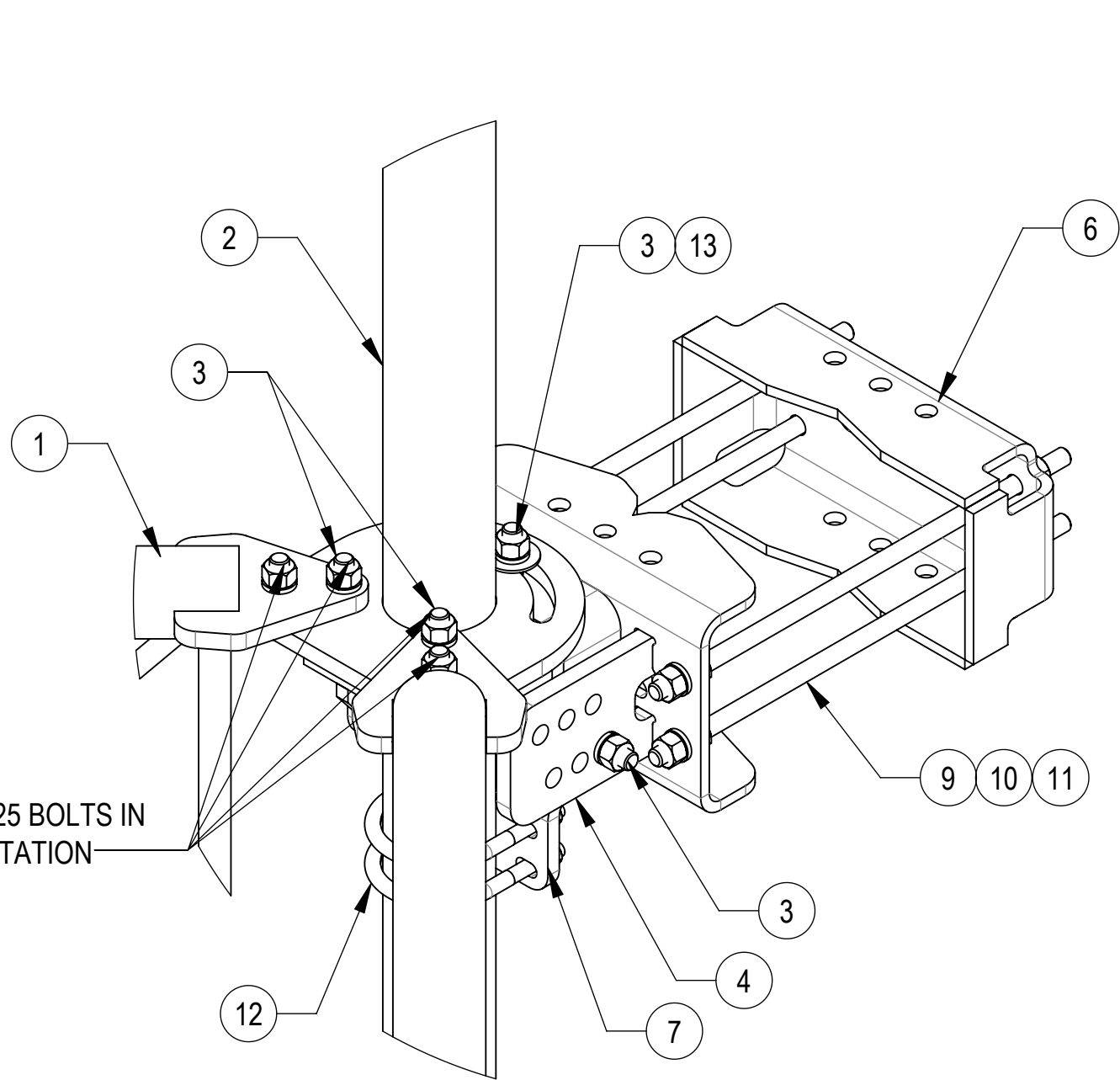
Confidential

4

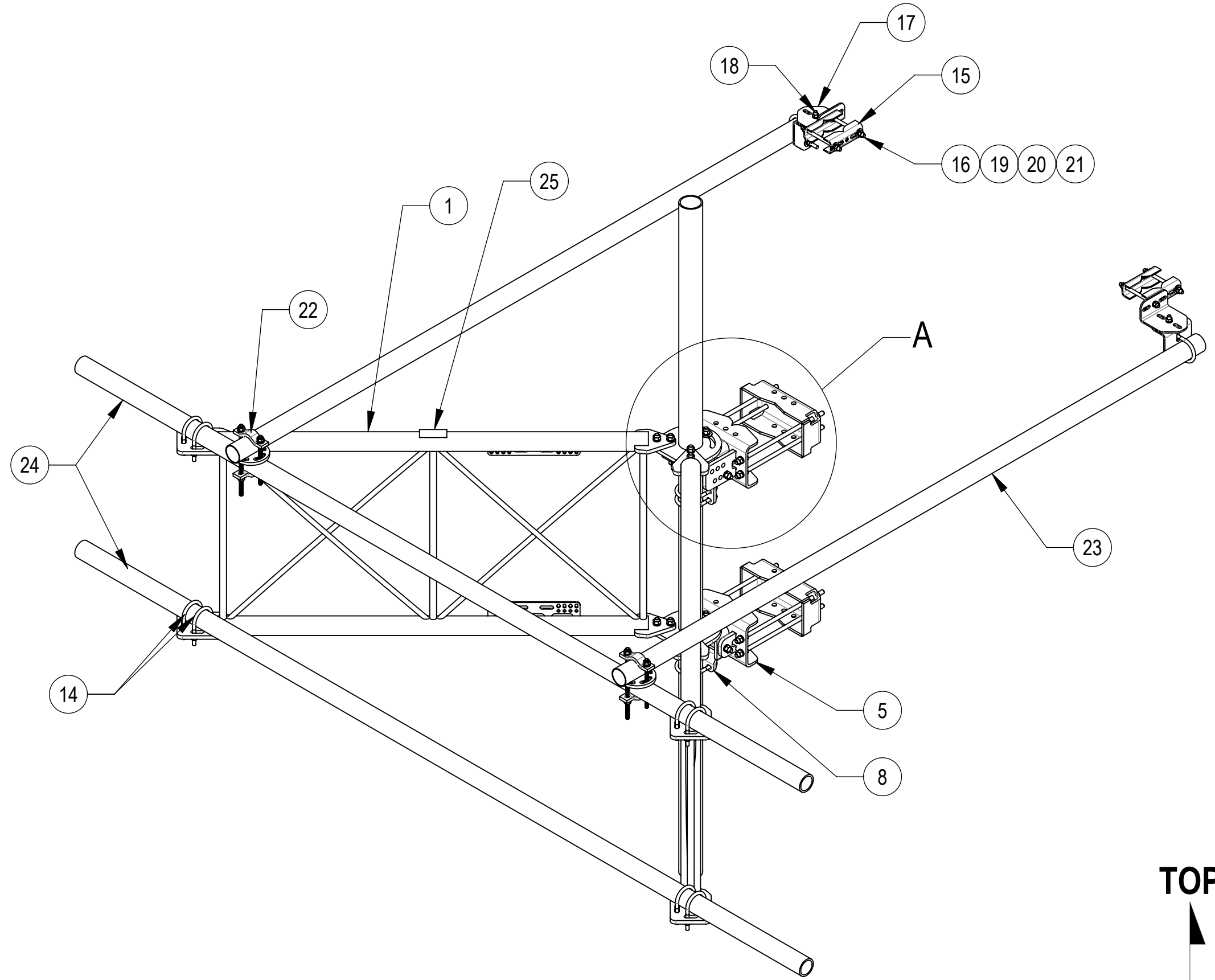
3

2

1



DETAIL A
SCALE 1 : 5



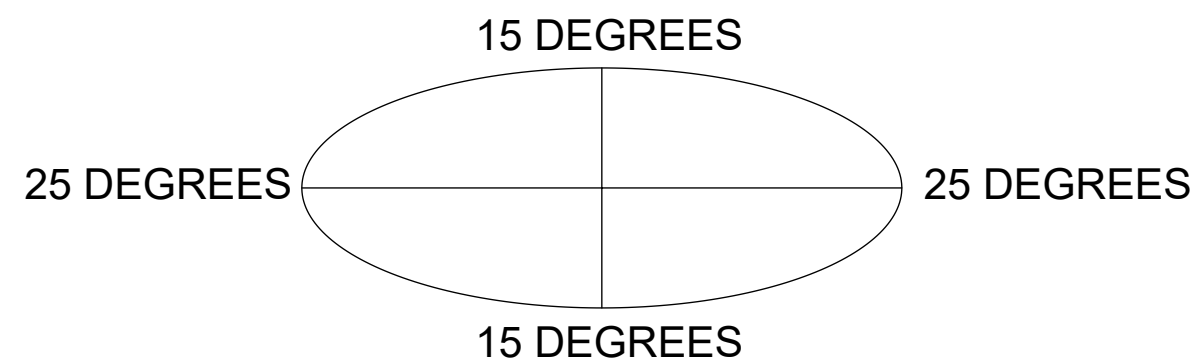
TOP
↑
BOTTOM
↓

COMPONENT PART NUMBERS PROVIDED FOR ASSEMBLY PURPOSES;
INDIVIDUAL COMPONENTS MAY BE SHIPPED AS PARTS WITHIN AN INCLUDED KIT.

ITEM	PART NO.	DESCRIPTION	QTY.	WEIGHT	NOTE NO.
1	SFG23180-00	ARM, STANDOFF, SFG23	2	123.29 LBS	
2	SFG2204	WELDMENT, BACK VERTICAL ARM MOUNT	1	97.29 LBS	
3	GB-05225	5/8" X 2-1/4" GALV BOLT KIT	14	0.28 LBS	
4	SFG2380	WELDMENT, HD, TOP TAPER BRACKET	1	22.78 LBS	
5	SFG2381	WELDMENT, HD, LOWER TOWER LEG BRACKET	1	17.42 LBS	
6	SFG2289	G2 RRU BACK CLAMP, HD	2	18.65 LBS	
7	SFG2386	WELDMENT, SFG2 AZIMUTH BRACKET	1	10.07 LBS	
8	SFG2397-00	WELDMENT, G23 AZIMUTH BRACKET	1	7.94 LBS	
9	MT-382-18	5/8" X 18" THREADED ROD	8	1.43 LBS	
10	GWL-05	5/8" GALV LOCK WASHER	16	0.03 LBS	
11	GN-05	5/8" GALV HEX NUT	24	0.08 LBS	
12	GUB-4355	1/2" X 3-5/8" X 5" GALV U-BOLT	3	0.71 LBS	
13	GWF-05	5/8" GALV FLAT WASHER, 1.7OD	2	0.06 LBS	
14	GUB-4352	1/2" X 3" X 5-1/4" GALV U-BOLT	10	0.71 LBS	
15	SAB01	FORMED CLAMP	4	1.35 LBS	
16	MT-379-8	1/2" X 8" GALV THREADED ROD	4	0.45 LBS	
17	XAU01	ANGLE, CROSSOVER, 1.9-3.5" X 1.9-3.5" OD	4	2.98 LBS	
18	GB-04145	1/2" X 1-1/2" GALV BOLT KIT	2	0.13 LBS	
19	GWF-04	1/2" GALV FLAT WASHER	8	0.04 LBS	
20	GWL-04	1/2" GALV LOCK WASHER	10	0.01 LBS	
21	GN-04	1/2" GALV HEX NUT	10	0.04 LBS	
22	XP-R	CROSSOVER PLATE, ROUND, UP TO 3.5" OD	2	6.20 LBS	
23	MT546120120	PIPE, 2.875"OD X 120"	2	35.44 LBS	
24	MT546150276	PIPE, 2.875"OD X 150"	2	96.11 LBS	
25	SFG23100	LABEL, SFG23RHDXL	1	0.03 LBS	

ALLOWABLE TIEBACK ANGLE

+15 DEGREES VERTICAL
+25 DEGREES HORIZONTAL



TITLE				
SECTOR FRAME 12' FACE, NO AP				
SIZE	SCALE	DOCUMENT NO.		
C	1:16	SFG23RHDXL-12-B		
DRAWING				SHEET
VERSION	STATUS	REVISION	2 OF 6	
02	RE	C		

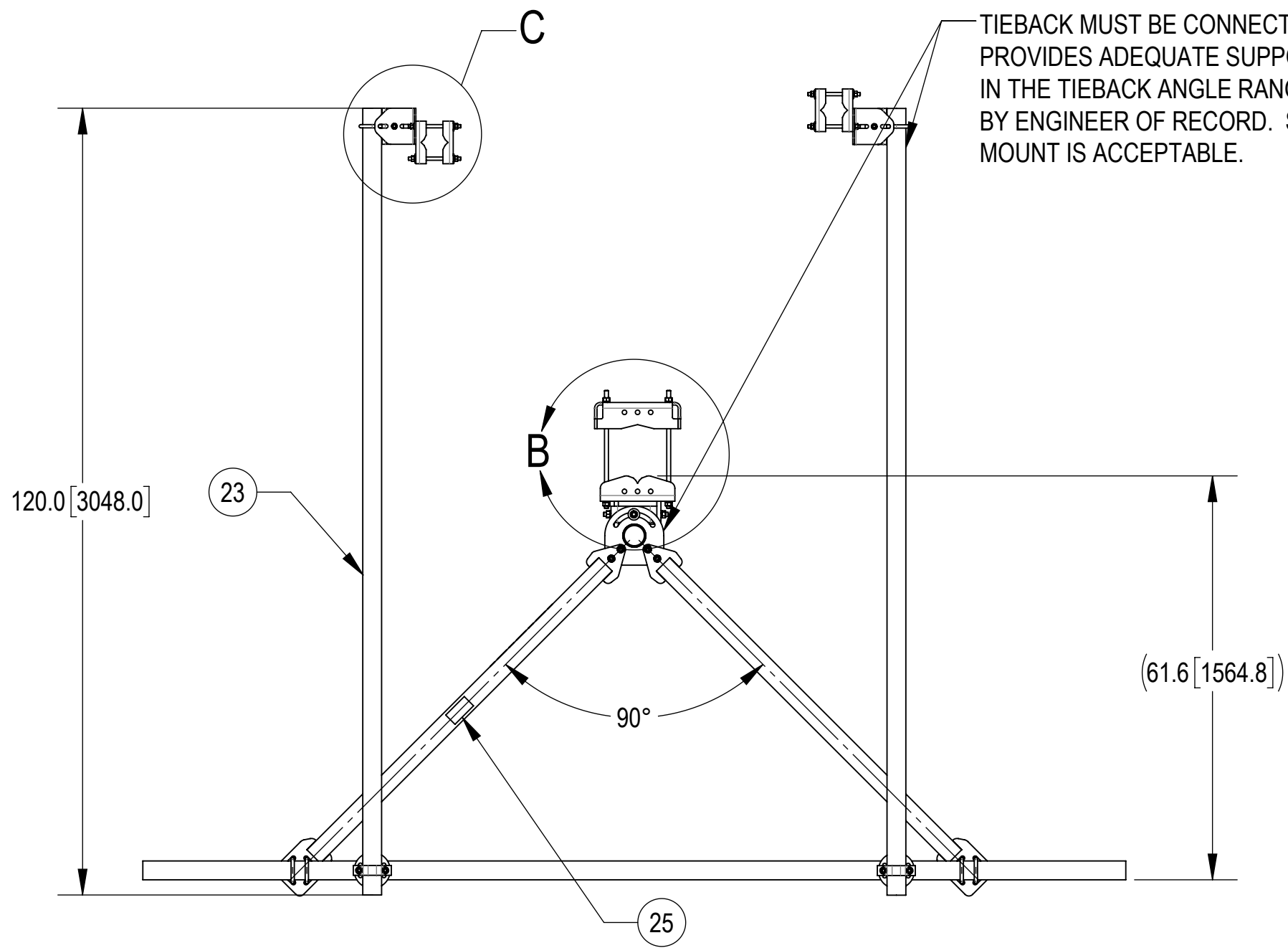
Confidential

4

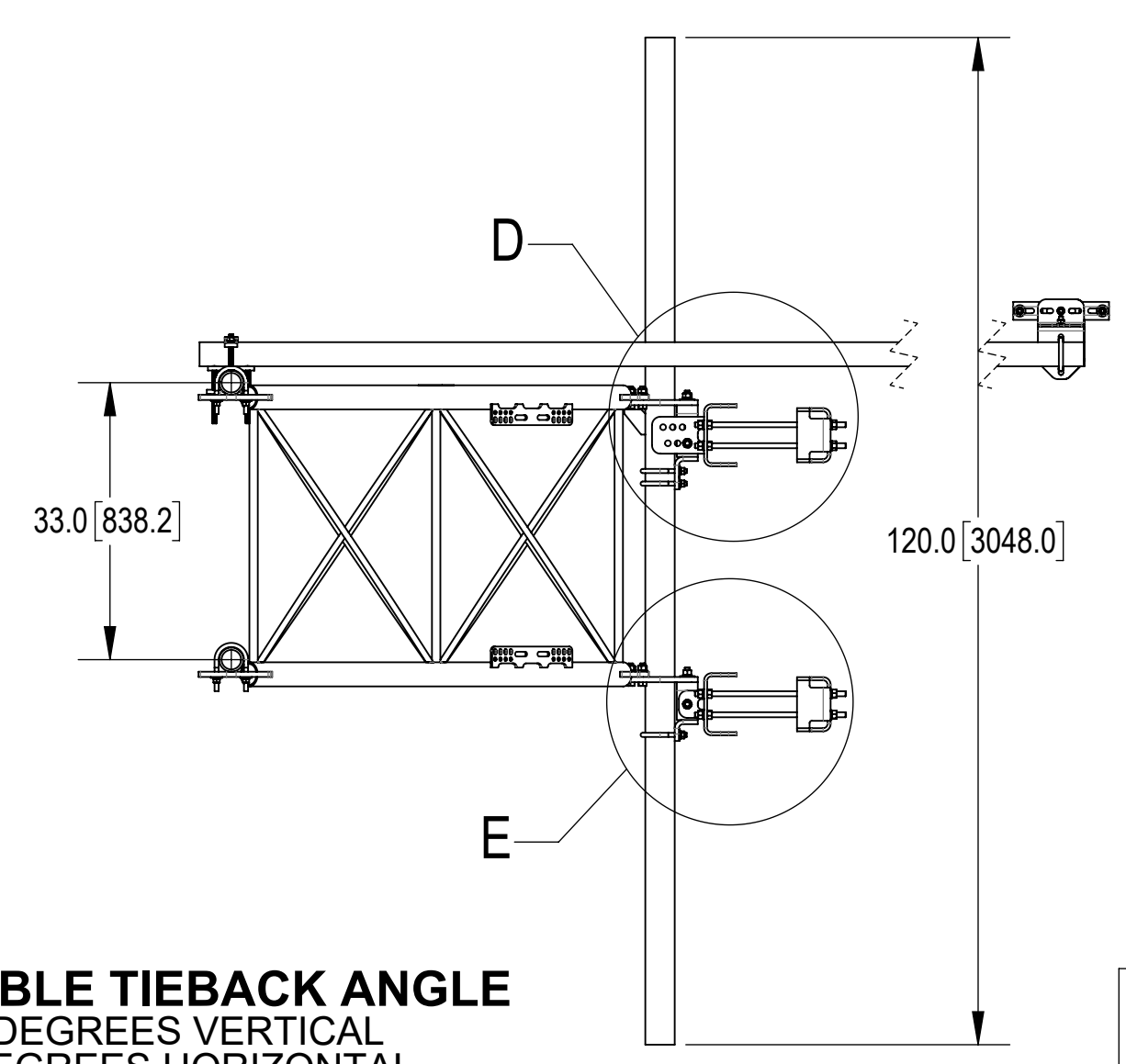
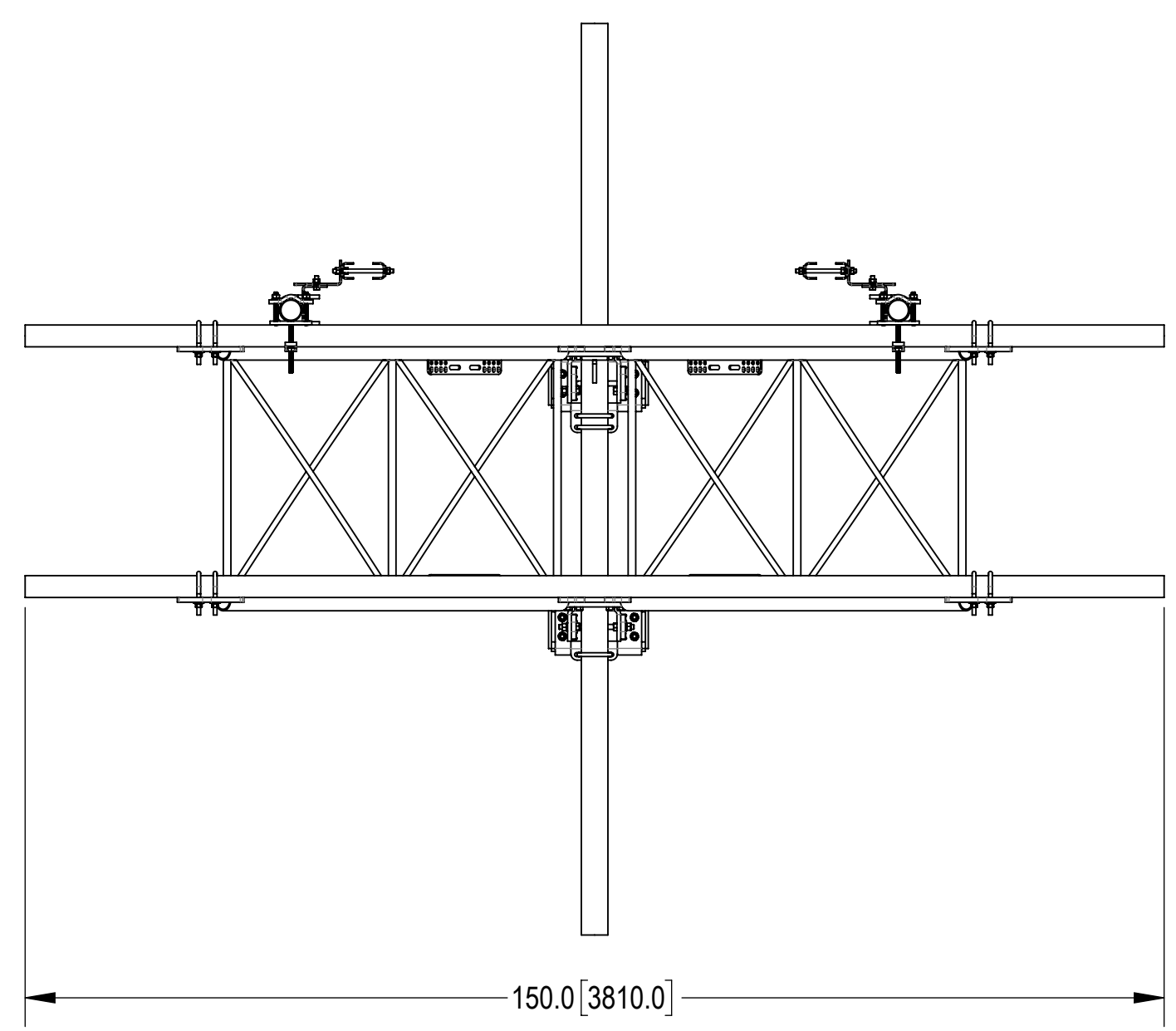
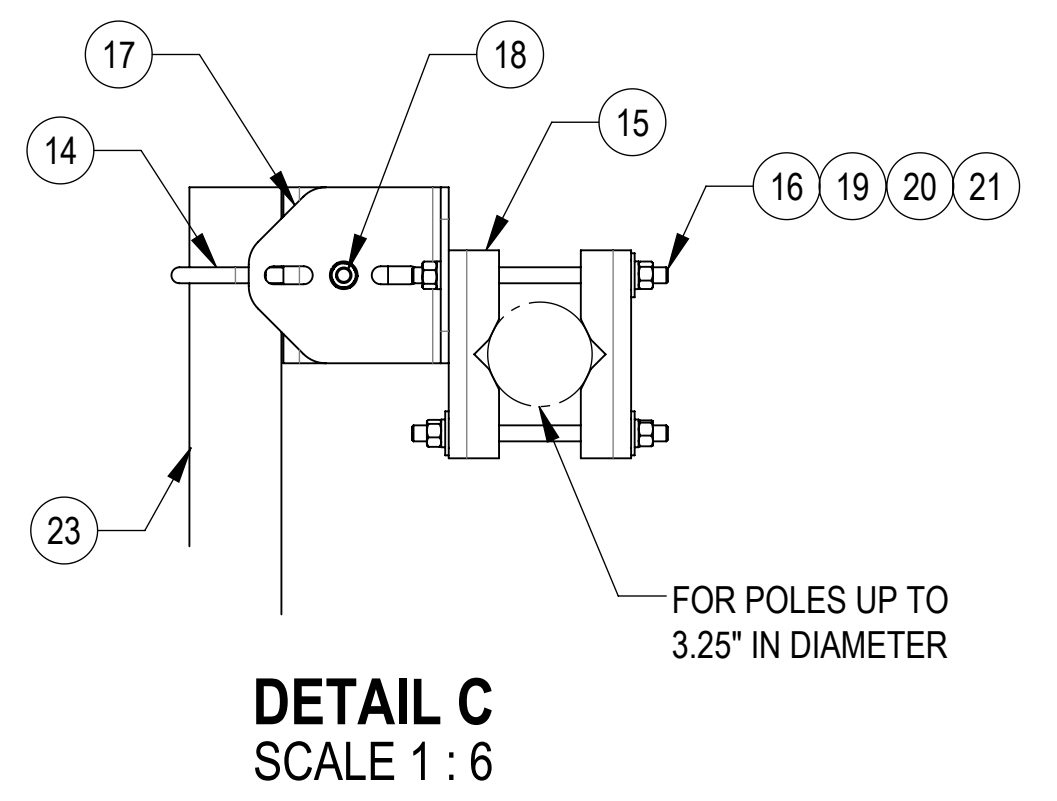
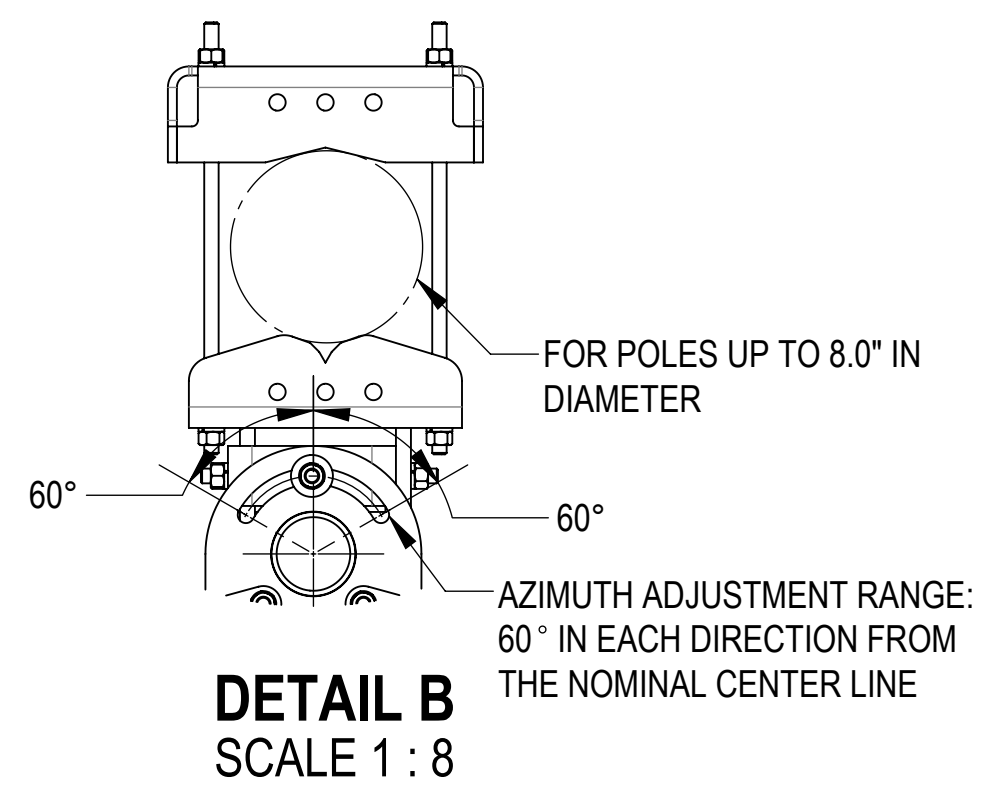
3

2

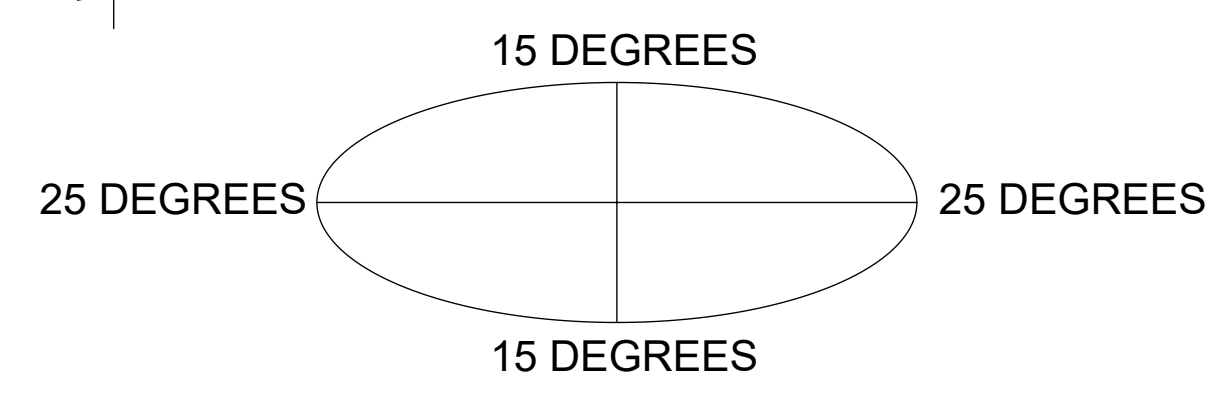
1



TIEBACK MUST BE CONNECTED TO A RIGID MEMBER THAT PROVIDES ADEQUATE SUPPORT WITHIN THE LIMITS NOTED IN THE TIEBACK ANGLE RANGE DETAIL. UNLESS APPROVED BY ENGINEER OF RECORD. SPINE STEM OF NEIGHBORING MOUNT IS ACCEPTABLE.



ALLOWABLE TIEBACK ANGLE
±15 DEGREES VERTICAL
±25 DEGREES HORIZONTAL



TOP

BOTTOM

		an Amphenol company	
TITLE			
SECTOR FRAME 12' FACE, NO AP			
SIZE	SCALE	DOCUMENT NO.	
C	1:21	SFG23RHDXL-12-B	
		DRAWING	
		VERSION	STATUS
		02	RE
		REVISION	
		C	
			SHEET
			3 OF 6

Confidential

4

3

2

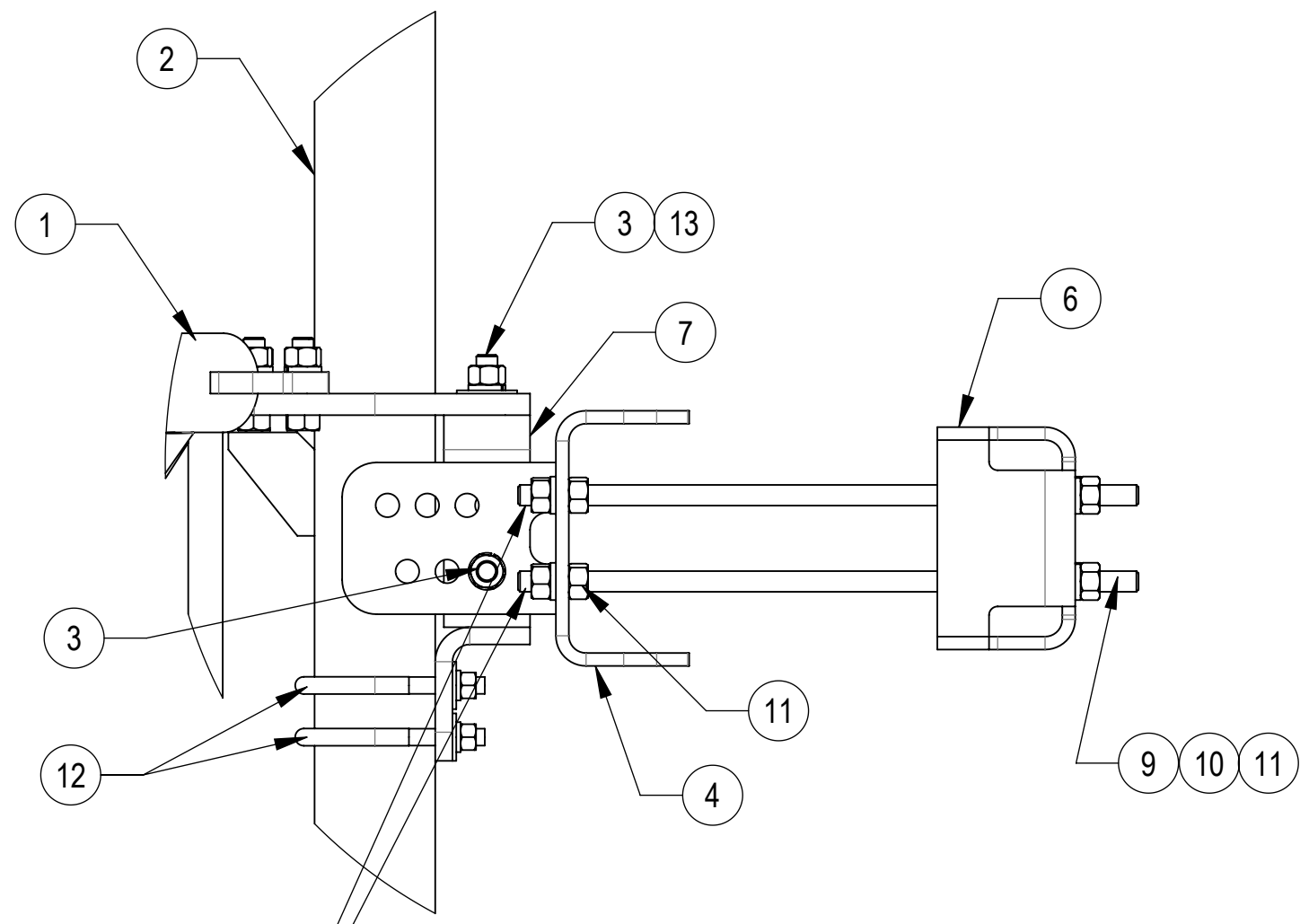
1

4

3

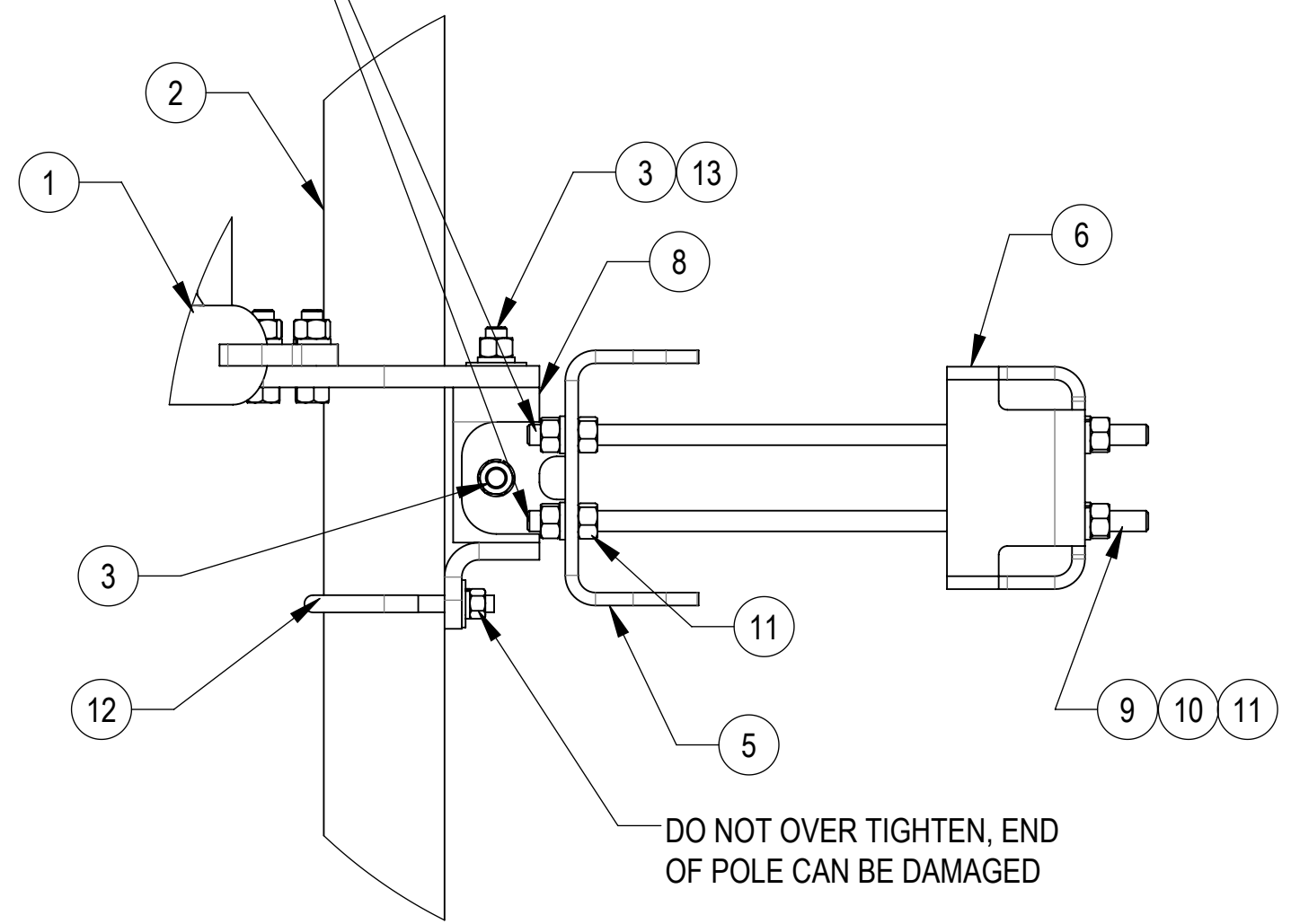
2

1



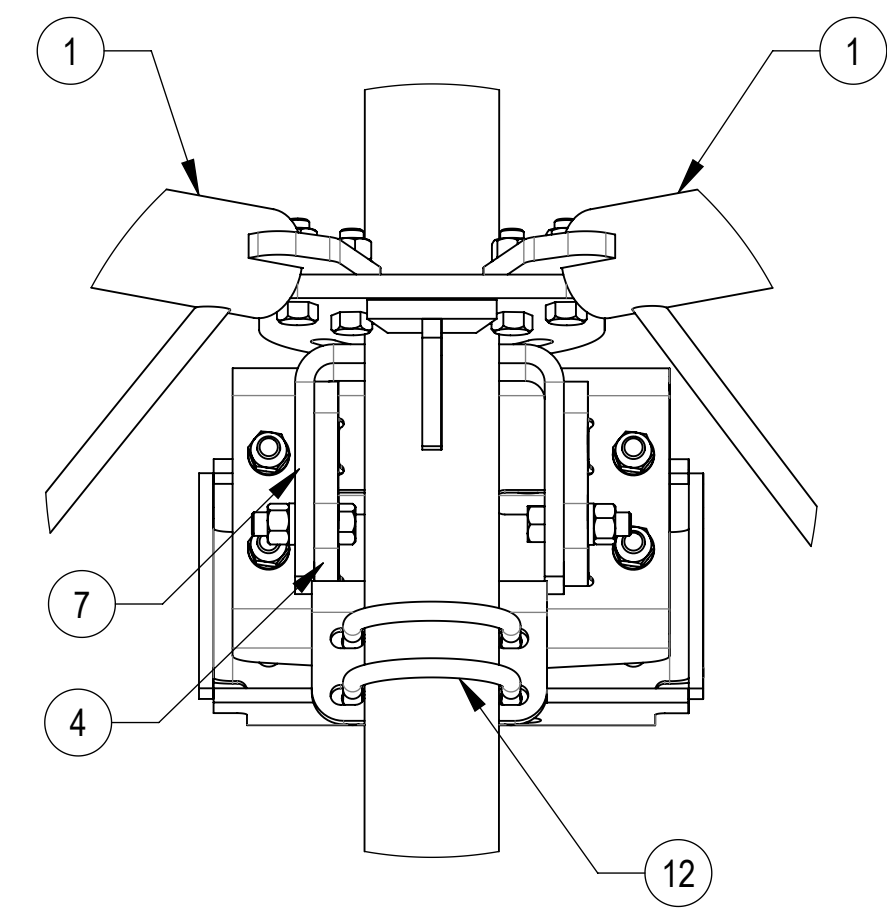
DETAIL D
SCALE 1 : 5

THE THREADED ROD CAN ONLY EXPOSE 4 TO 7 THREADS ON ONE SIDE OF THE BRACKET, WHICH IS TO PREVENT INTERFERENCE WITH THE SIDE BOLTS

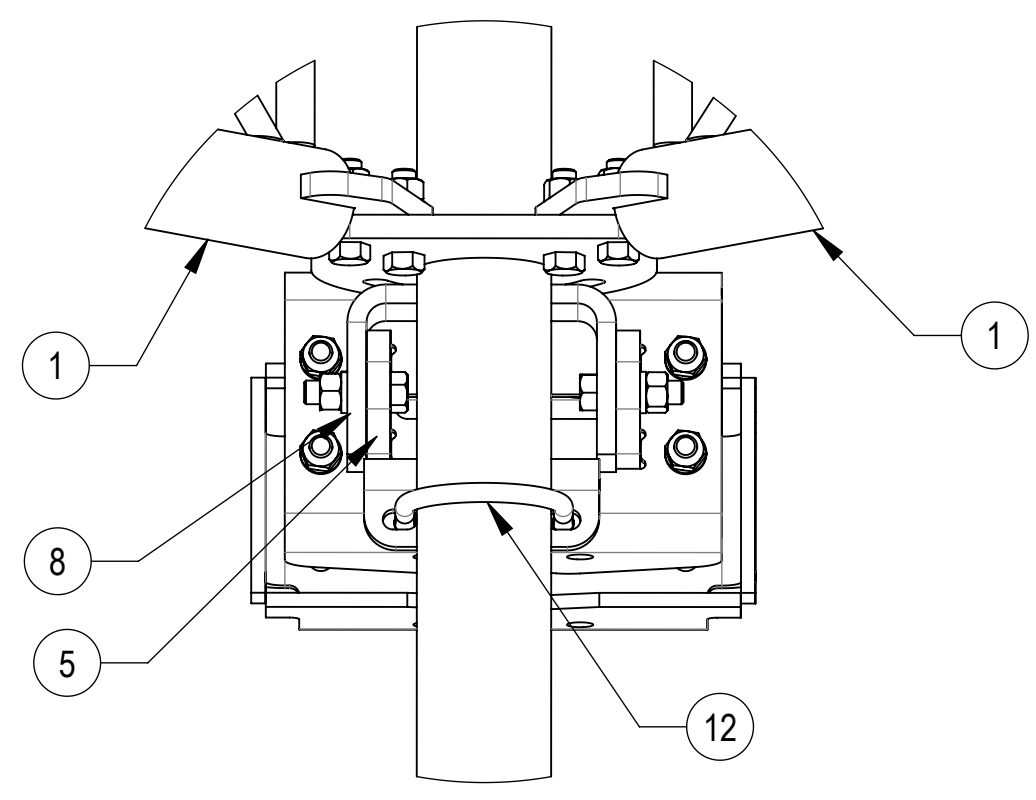


DETAIL E
SCALE 1 : 5

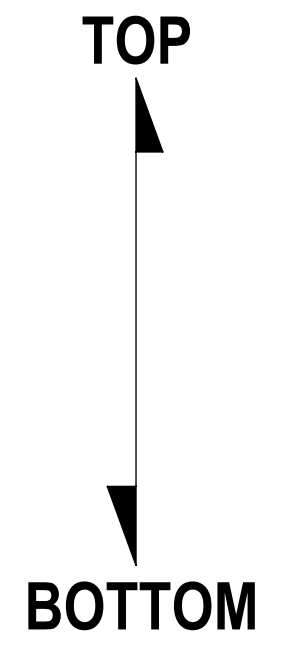
DO NOT OVER TIGHTEN, END OF POLE CAN BE DAMAGED



DETAIL ISO TOP ROTATED VIEW
SCALE 1 : 5



DETAIL ISO BOTTOM ROTATED VIEW
SCALE 1 : 5



TITLE					SECTOR FRAME 12' FACE, NO AP	
SIZE	SCALE	DOCUMENT NO.				
C	1:21	SFG23RHDXL-12-B				
		DRAWING			SHEET	
		VERSION	STATUS	REVISION	4 OF 6	
		02	RE	C		

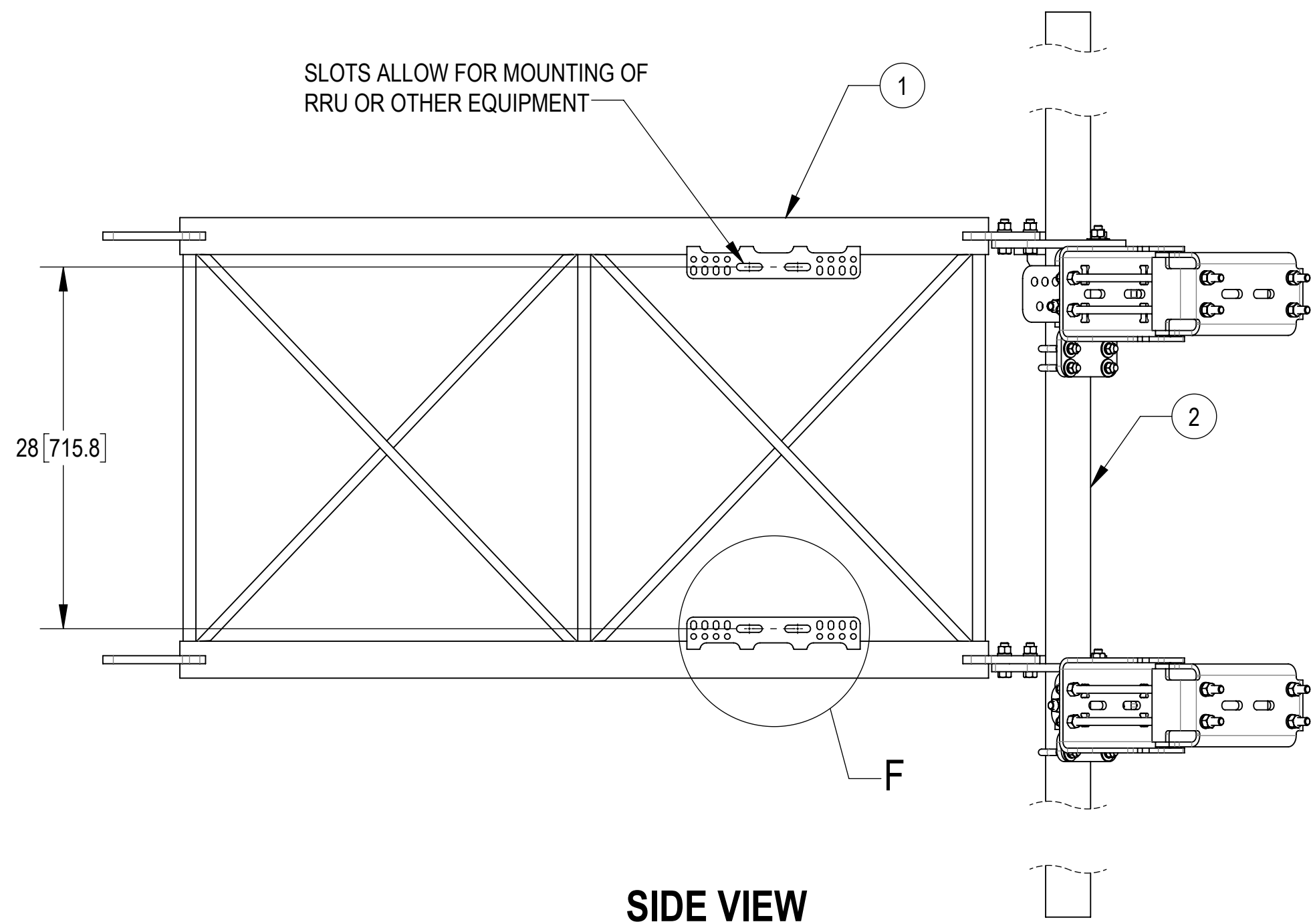
Confidential

4

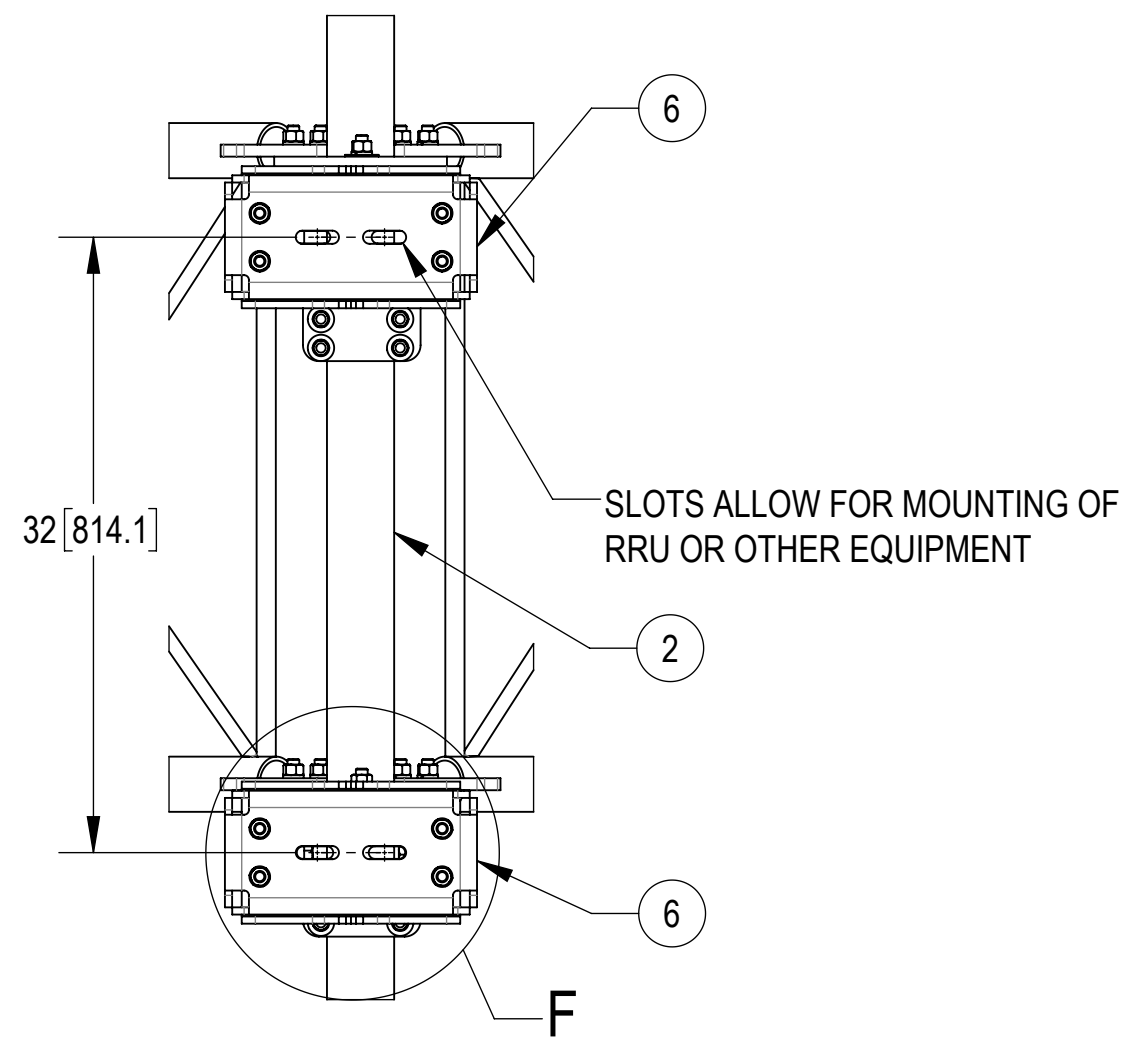
3

2

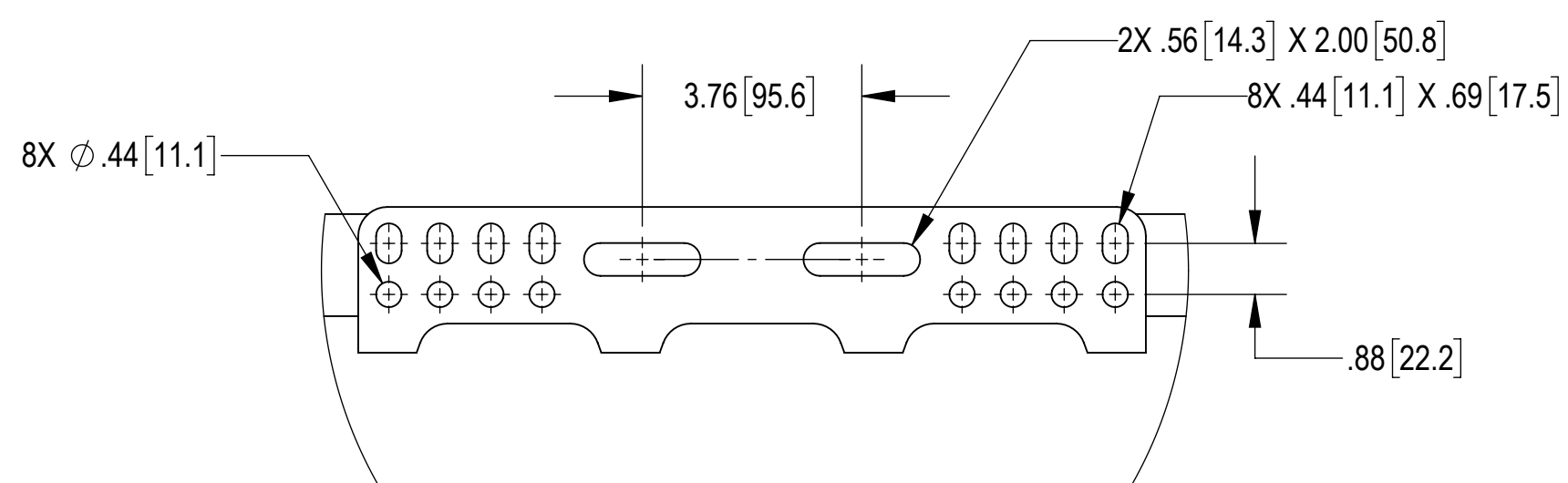
1



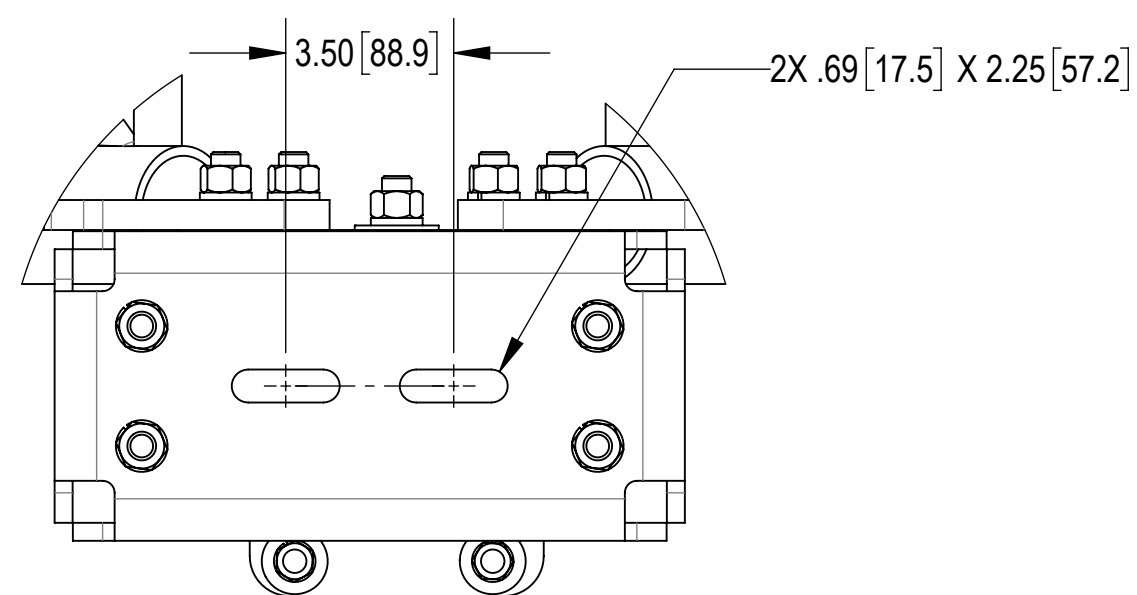
SIDE VIEW



BACK CROP VIEW



DETAIL F
SCALE 1 : 3



DETAIL F
SCALE 1 : 4

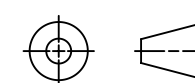
ANDREW an Amphenol company

TITLE
SECTOR FRAME 12' FACE, NO AP

SIZE C	SCALE 1:10	DOCUMENT NO. SFG23RHDXL-12-B
------------------	----------------------	---------------------------------

DRAWING			SHEET 5 OF 6
VERSION 02	STATUS RE	REVISION C	

Confidential



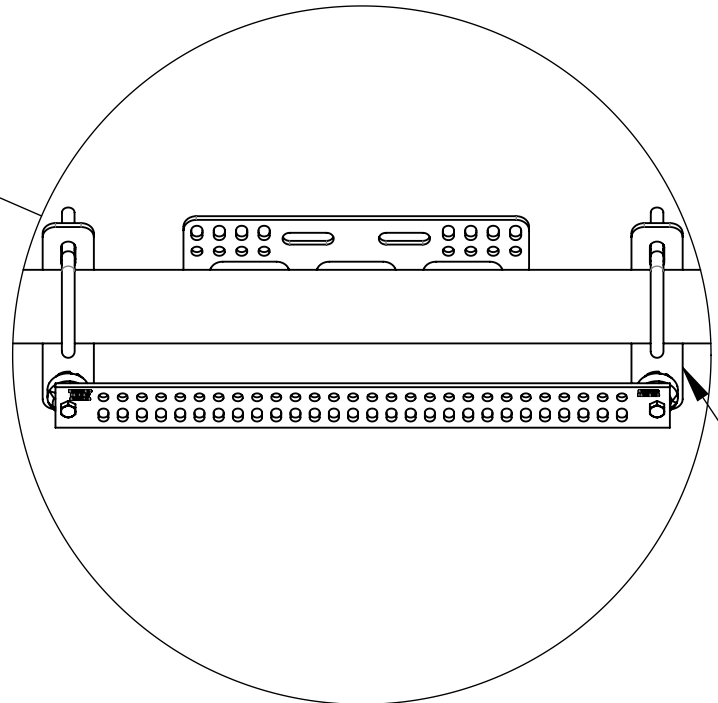
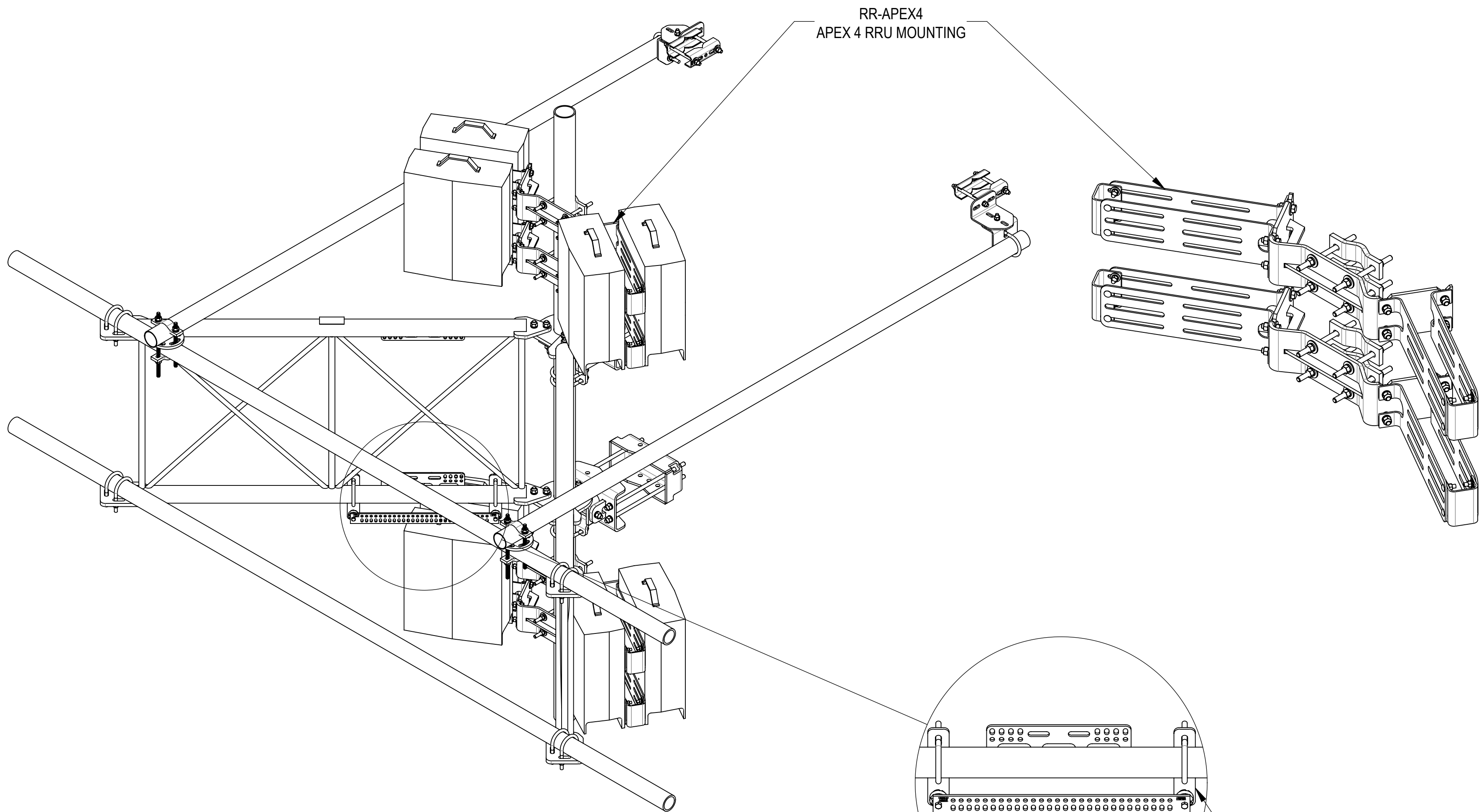
4

3



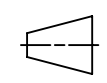
2

1

ACCESSORIES ORDERED SEPARATELY:



DETAIL N
SCALE 2 : 15

 ANDREW ® an Amphenol company				
TITLE SECTOR FRAME 12' FACE, NO AP				
SIZE C	SCALE 1:12	DOCUMENT NO. SFG23RHDXL-12-B		
 		DRAWING		SHEET 6 OF 6
		VERSION 02	STATUS RE	

Confidential

4

3

2

1

D

D

C

C

B

B

A

A