

- 1.0 GENERAL NOTES
  - 1.1 ALL METRIC DIMENSIONS ARE IN BRACKETS [X. X]
  - 1.2 FOR PATENT INFO: <https://www.adwpat.com>

- 2.0 DESIGN NOTES
  - 2.1 ANY HAZARDS OR OBSTRUCTIONS TO THE CLIMBING FACILITY AND SAFETY CLIMB MUST BE IDENTIFIED PRIOR TO INSTALLING THE APPURTENANCE. ADDITIONAL PRODUCTS MAY BE REQUIRED TO MAINTAIN THE INTEGRITY OF THE SAFETY CLIMB. DURING INSTALLATION, TEMPORARY AND/OR PERMANENT PRECAUTIONARY MEASURES SHOULD BE TAKEN TO PRESERVE THE CLIMBING FACILITY AND/OR SAFETY CLIMB.

- 2.2 FITS MONOPOLES 15" TO 50" OD.
- 2.3 MIN RECOMMENDED POLE THICKNESS 3/16"

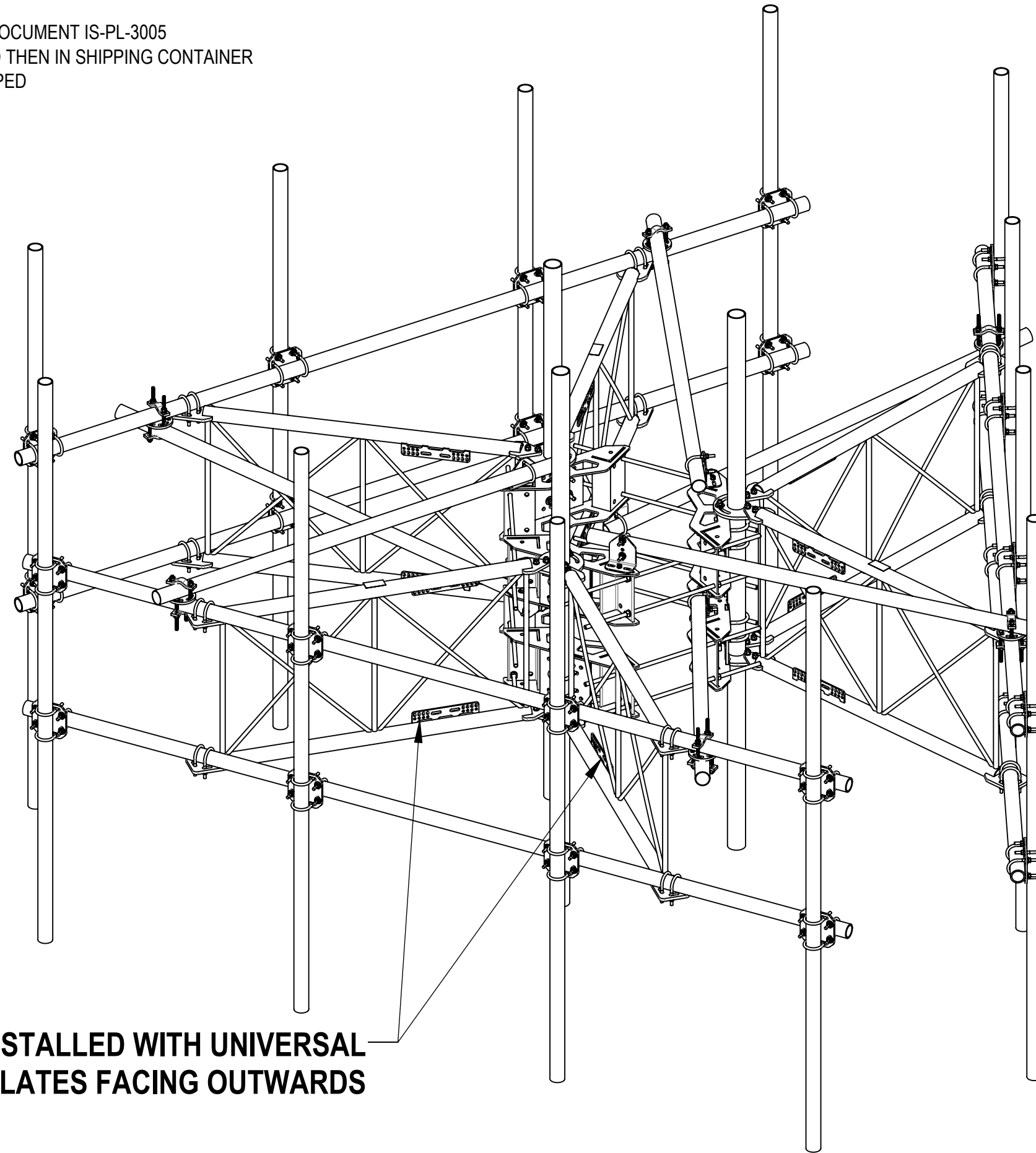
- 3.0 MANUFACTURING/SPECIAL REQUIREMENTS
  - 3.1 TIGHTEN ALL BOLTS SECURING FLAT PLATES BY THE TURN-OF-NUT METHOD. TIGHTEN ALL U-BOLTS USING TURN-OF-NUT METHOD WITH ATTENTION TO LEAVE EQUAL DISTANCE AND EQUAL FORCE ON EACH LEG OF THE U-BOLT.

4.0 TEST


5.0 PACKAGING

- 5.1 PACKAGING SHALL MEET ANDREW REQUIREMENTS PER DOCUMENT IS-PL-3005
- 5.2 PRINTED DOCUMENT TO BE PLACED INSIDE POLYBAG AND THEN IN SHIPPING CONTAINER
- 5.3 EXTRA HARDWARE MAY BE SUPPLIED, BAGGED AND SHIPPED


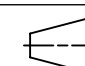
REVISIONS			
REV.	DESCRIPTION	DATE	APPROVED
A	INITIAL RELEASE	RY1002 29NOV23	YC1015 40182550CMO
B	UPDATED SFG23180-00 TO ADD UNIVERSAL INTERFACE PLATES	RY1002 25JUL24	XK1001 40200655CMO



**SHOULD BE INSTALLED WITH UNIVERSAL INTERFACE PLATES FACING OUTWARDS**



**ANDREW**® an Amphenol company

TOLERANCES		SAP MATERIAL MASTER						
1 PLACE .X[X] ± 0.2[6.3]	3 PLACE .XXX[X] ± 0.060[1.5]	<b>MCG23RHDXL15M12126</b>						
2 PLACE .XX[X] ± 0.12[3.0]	ANGLES ± 2°							
FINISH		MATERIAL						
UNLESS OTHERWISE SPECIFIED DIMENSIONS ARE IN INCHES INTERPRET PER ANSI Y 14.5M-1994		NAME	DATE	TITLE				
		CE RY1002	29NOV23	<b>MONO 3 SCTR FR 15' FACE,(12) 126" ANT</b>				
		RW YC1059	06/18/2025					
		AD YMENG	06/18/2025					
		RE YMENG	06/18/2025					
ECN 40200655CMO								
SCALE	DOCUMENT NO.	<b>1:23 MCG23RHDXL15M12126</b>						
SIZE	Auth Group	INSL	MODEL	DRAWING		SHEET 1 OF 5		
<b>C</b>			VERSION	STATUS	REVISION		VERSION	STATUS
			02	RE	<b>C</b>	01	RE	<b>B</b>

DENSITY		lbs/in³
MASS	3401.90	lbs
VOLUME	21264.57	in³
SURFACE AREA	137530.88	in²
HEIGHT	126"	
LENGTH	221"	
WIDTH	200"	

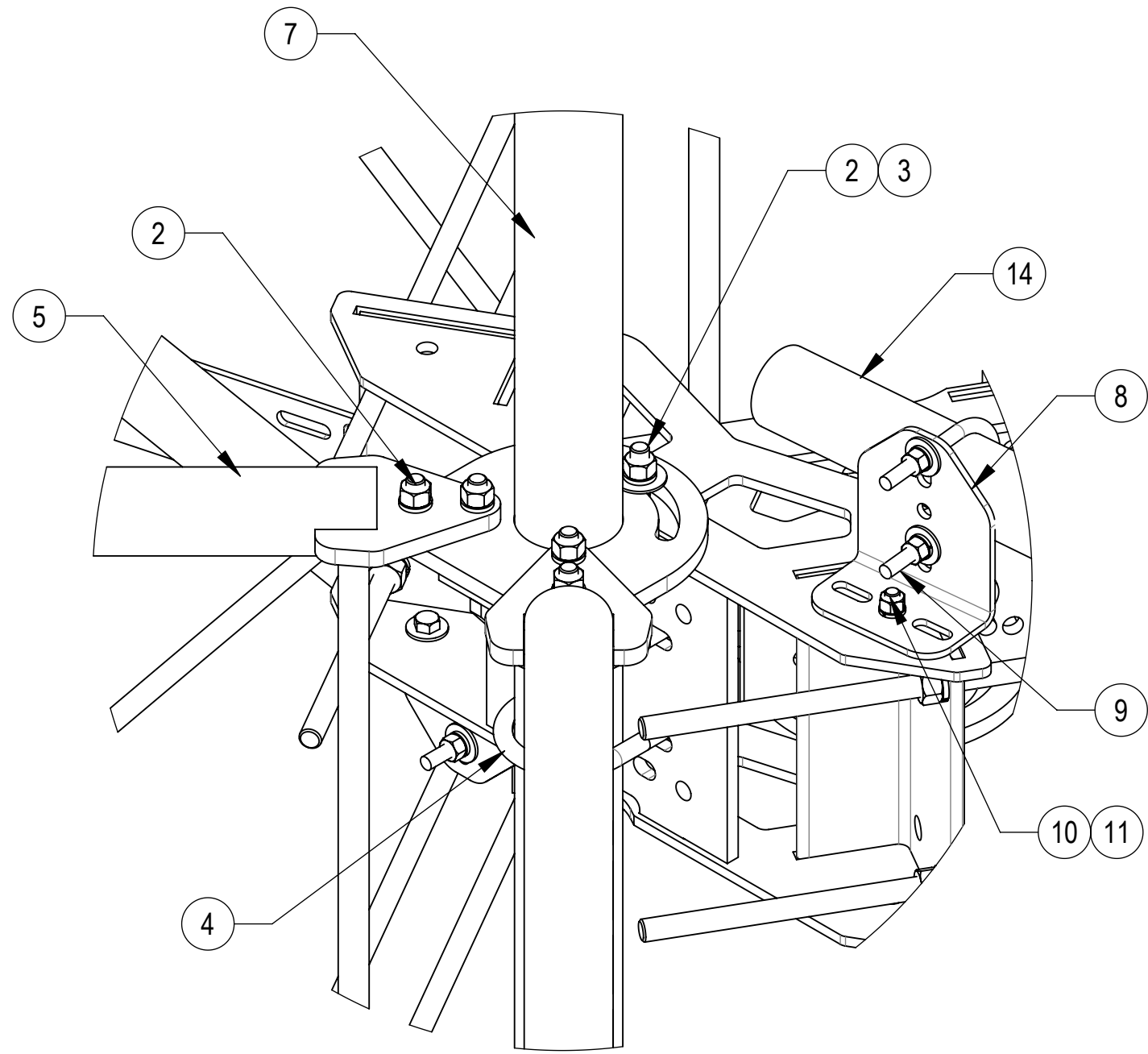
Confidential

4

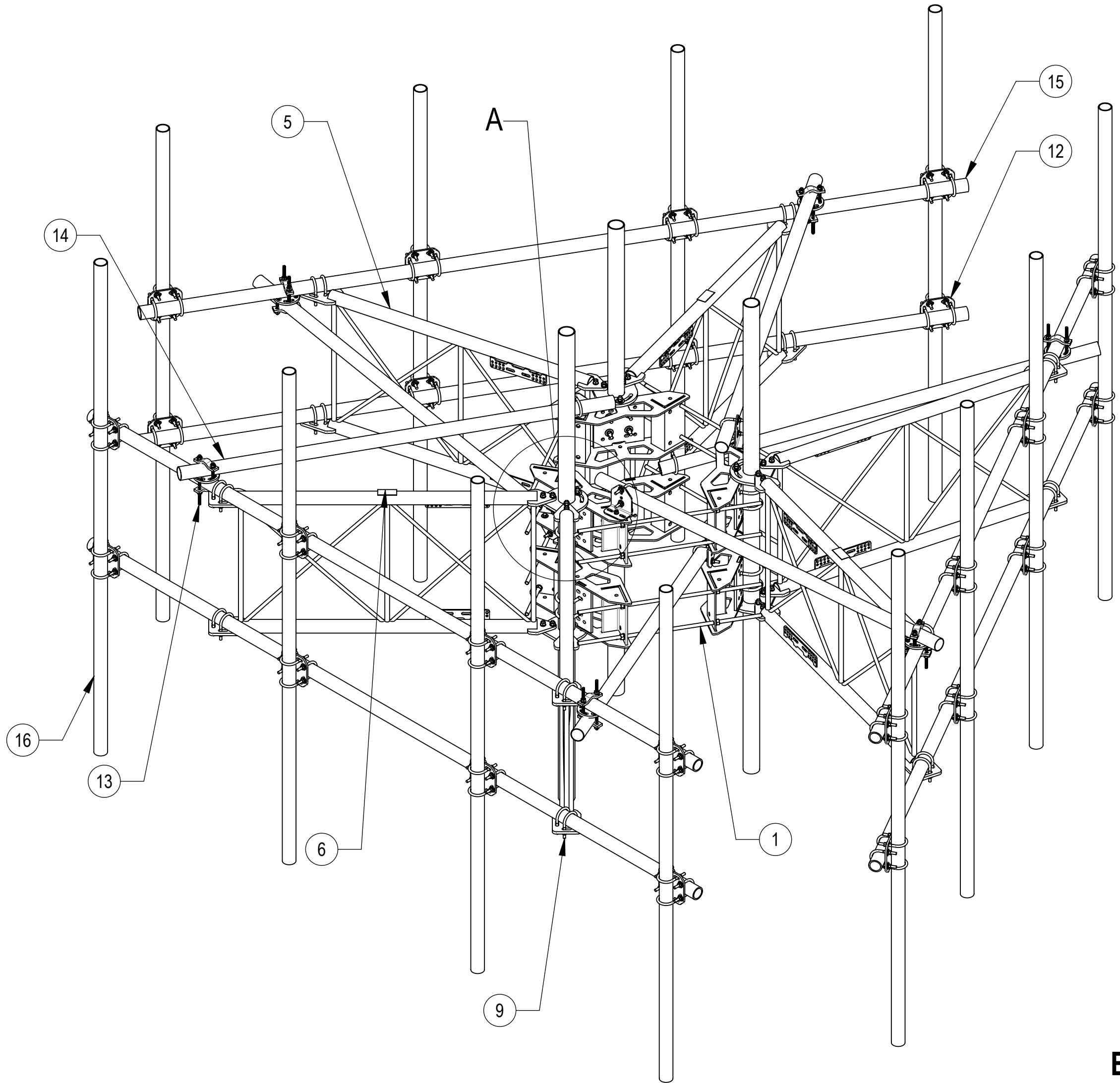
3

2

1



**DETAIL A**  
SCALE 1 : 5



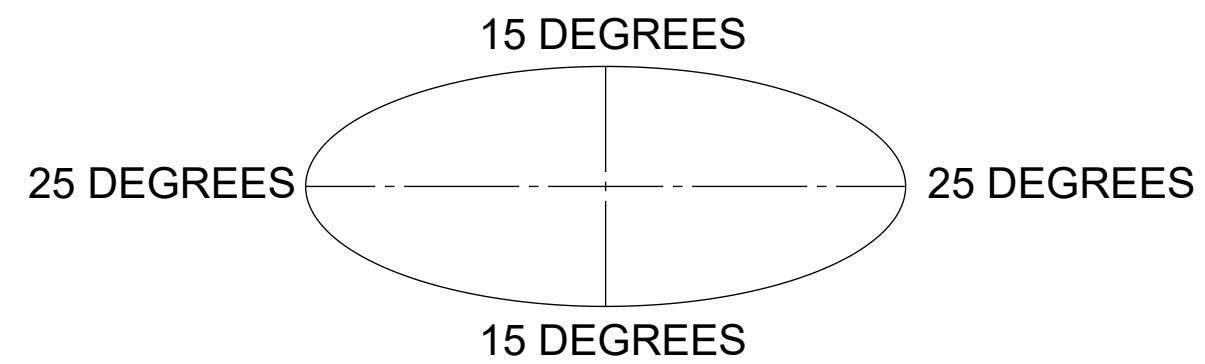
**TOP**  
↑  
↓  
**BOTTOM**

COMPONENT PART NUMBERS PROVIDED FOR ASSEMBLY PURPOSES;  
INDIVIDUAL COMPONENTS MAY BE SHIPPED AS PARTS WITHIN AN INCLUDED KIT.

ITEM	PART NO.	DESCRIPTION	QTY.	WEIGHT	NOTE NO.
1	MC-RM1550-3	15" - 50" OD RINGMOUNT	2	229.90 LBS	
2	GB-05225	5/8" X 2-1/4" GALV BOLT KIT	30	0.28 LBS	
3	GWF-05	5/8" GALV FLAT WASHER, 1.7OD	6	0.06 LBS	
4	GUB-53560	5/8" X 3-5/8" X 6" GALV U-BOLT	12	1.30 LBS	
5	SFG23180-00	ARM, STANDOFF, SFG23	6	123.29 LBS	
6	SFG23100	LABEL, SFG23RHDXL	3	0.03 LBS	
7	SFG2204	WELDMENT, BACK VERTICAL ARM MOUNT	3	97.29 LBS	
8	XAU01	ANGLE, CROSSOVER, 1.9-3.5" X 1.9-3.5" OD	6	2.98 LBS	
9	GUB-4352	1/2" X 3" X 5-1/4" GALV U-BOLT	30	0.71 LBS	
10	GB-04145	1/2" X 1-1/2" GALV BOLT KIT	6	0.13 LBS	
11	GWF-04	1/2" GALV FLAT WASHER	6	0.04 LBS	
12	XP-2525	CROSSOVER PLATE KIT, 2-7/8 OD X 2-7/8 OD	24	8.37 LBS	
13	XP-R	CROSSOVER PLATE, ROUND, UP TO 3.5" OD	6	6.20 LBS	
14	MT54696120	PIPE, 2.875"OD X 96"	6	28.35 LBS	
15	MT546180276	PIPE, 2.875"OD X 180"	6	115.33 LBS	
16	MT-546-126	PIPE, 2.875"OD X 126"	12	61.05 LBS	

**ALLOWABLE TIEBACK ANGLE**

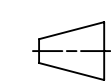
±15 DEGREES VERTICAL  
±25 DEGREES HORIZONTAL



TITLE  
**MONO 3 SCTR FR 15' FACE,(12) 126" ANT**

SIZE **C** SCALE **1:20** DOCUMENT NO. **MCG23RHDXL15M12126**

Confidential



DRAWING			SHEET 2 OF 5
VERSION	STATUS	REVISION	
01	RE	B	

4

3

2

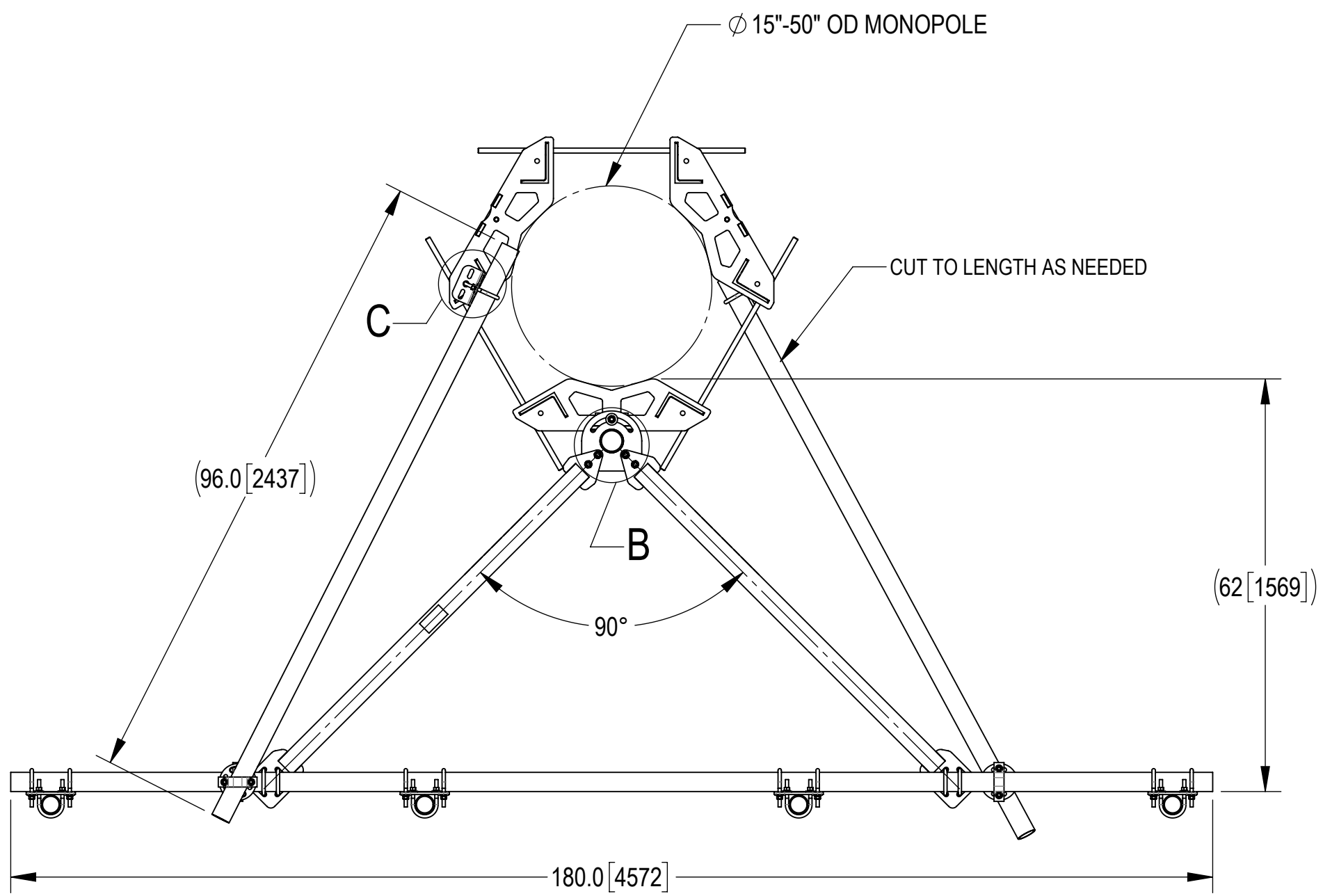
1

4

3

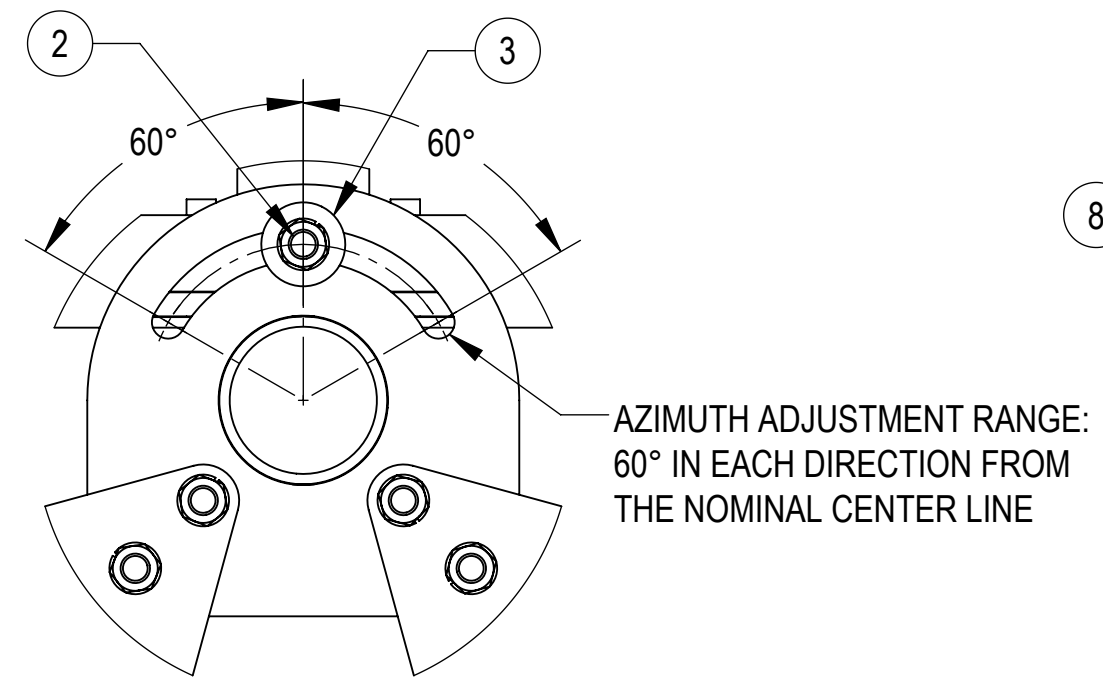
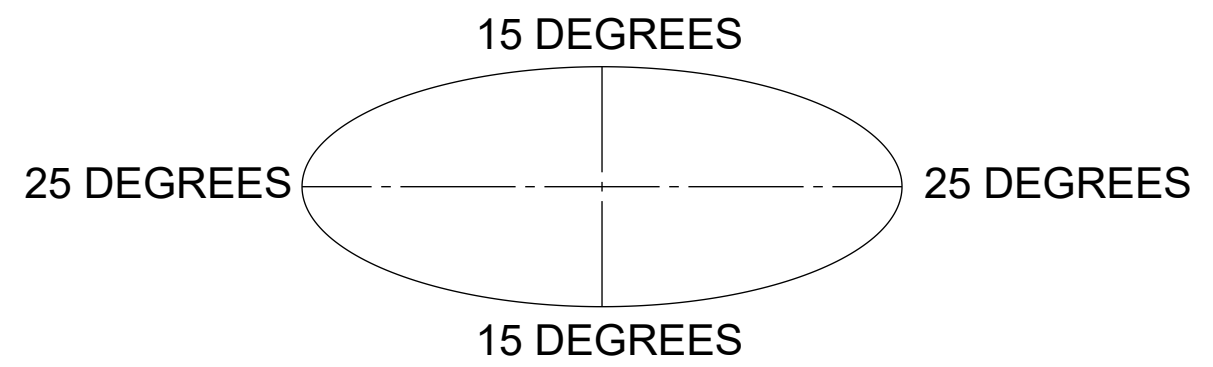
2

1

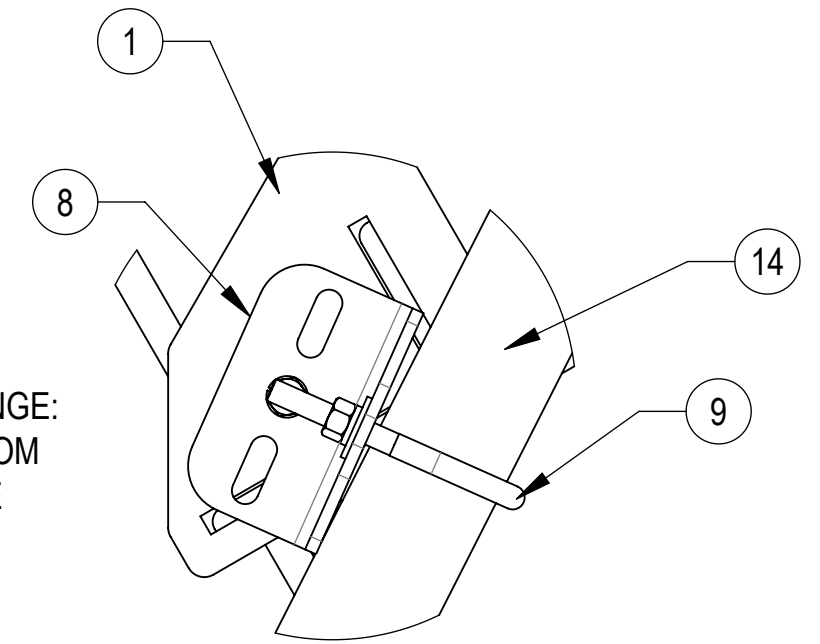


### ALLOWABLE TIEBACK ANGLE

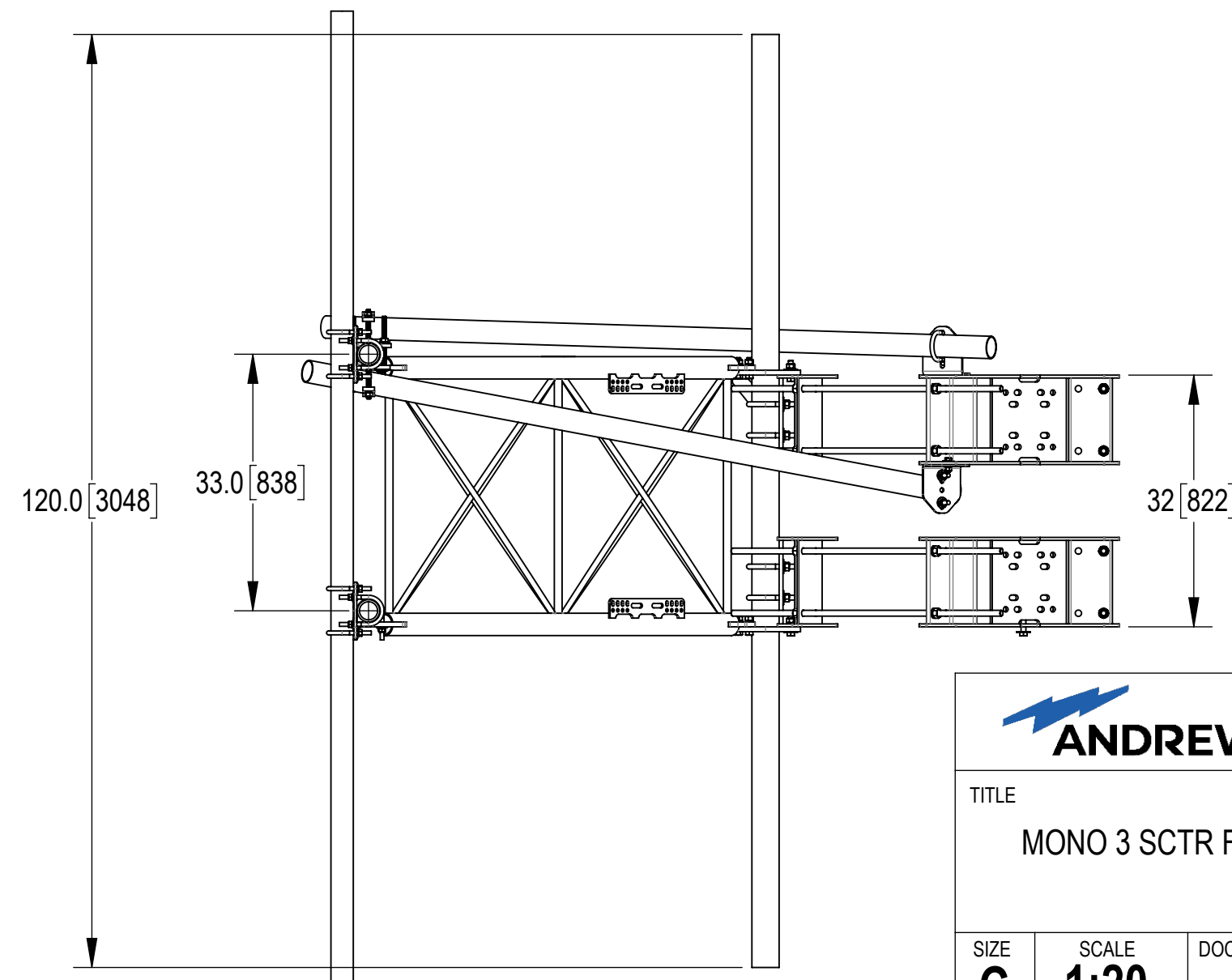
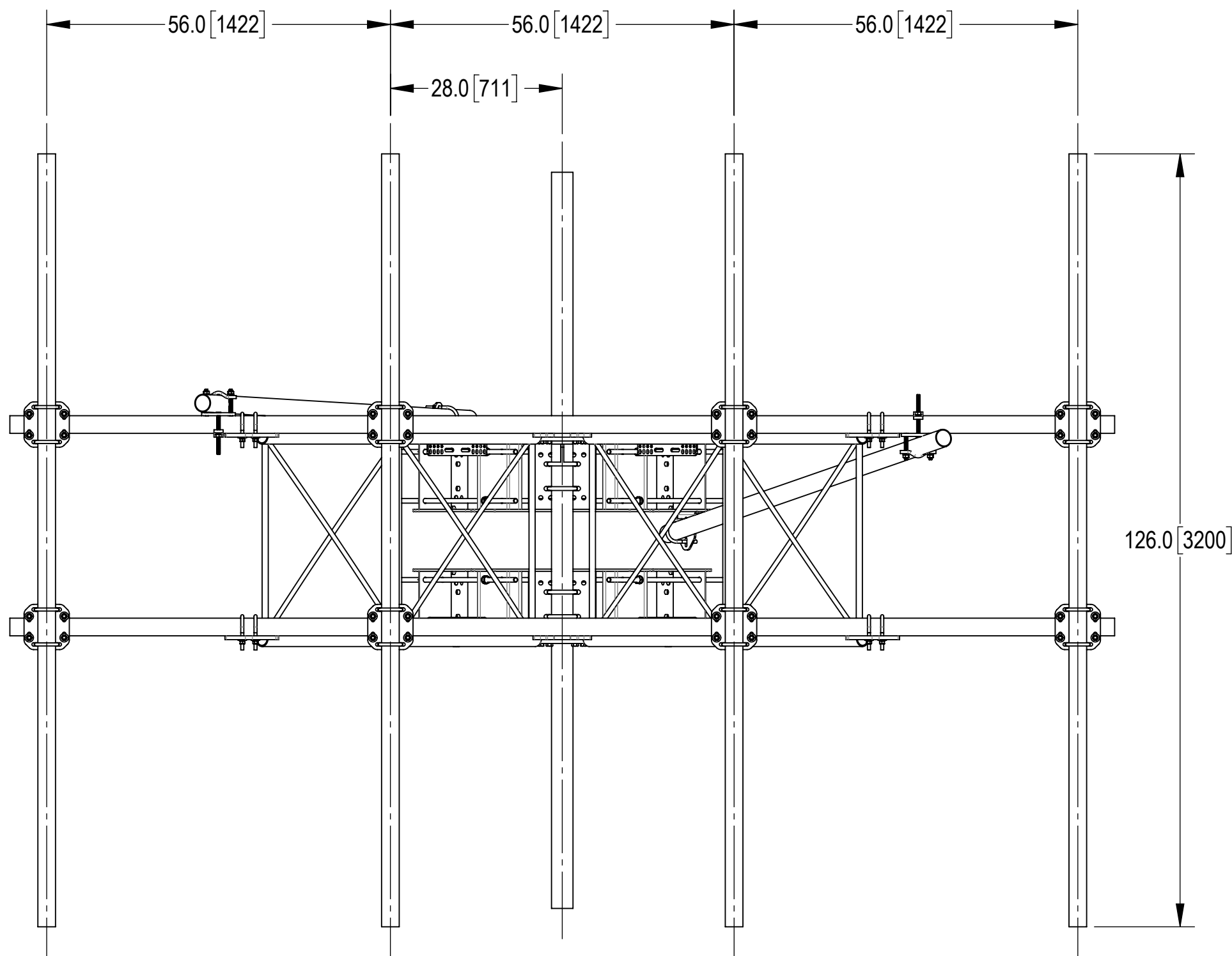
± 15 DEGREES VERTICAL  
± 25 DEGREES HORIZONTAL



**DETAIL B**  
SCALE 1 : 4



**DETAIL C**  
SCALE 1 : 4



**TOP**

**BOTTOM**

**ANDREW** an Amphenol company

TITLE  
MONO 3 SCTR FR 15' FACE,(12) 126" ANT

SIZE <b>C</b>	SCALE <b>1:20</b>	DOCUMENT NO. MCG23RHDXL15M12126
------------------	----------------------	------------------------------------

DRAWING			SHEET 3 OF 5
VERSION 01	STATUS RE	REVISION B	

Confidential

4

3

2

1

4

3

2

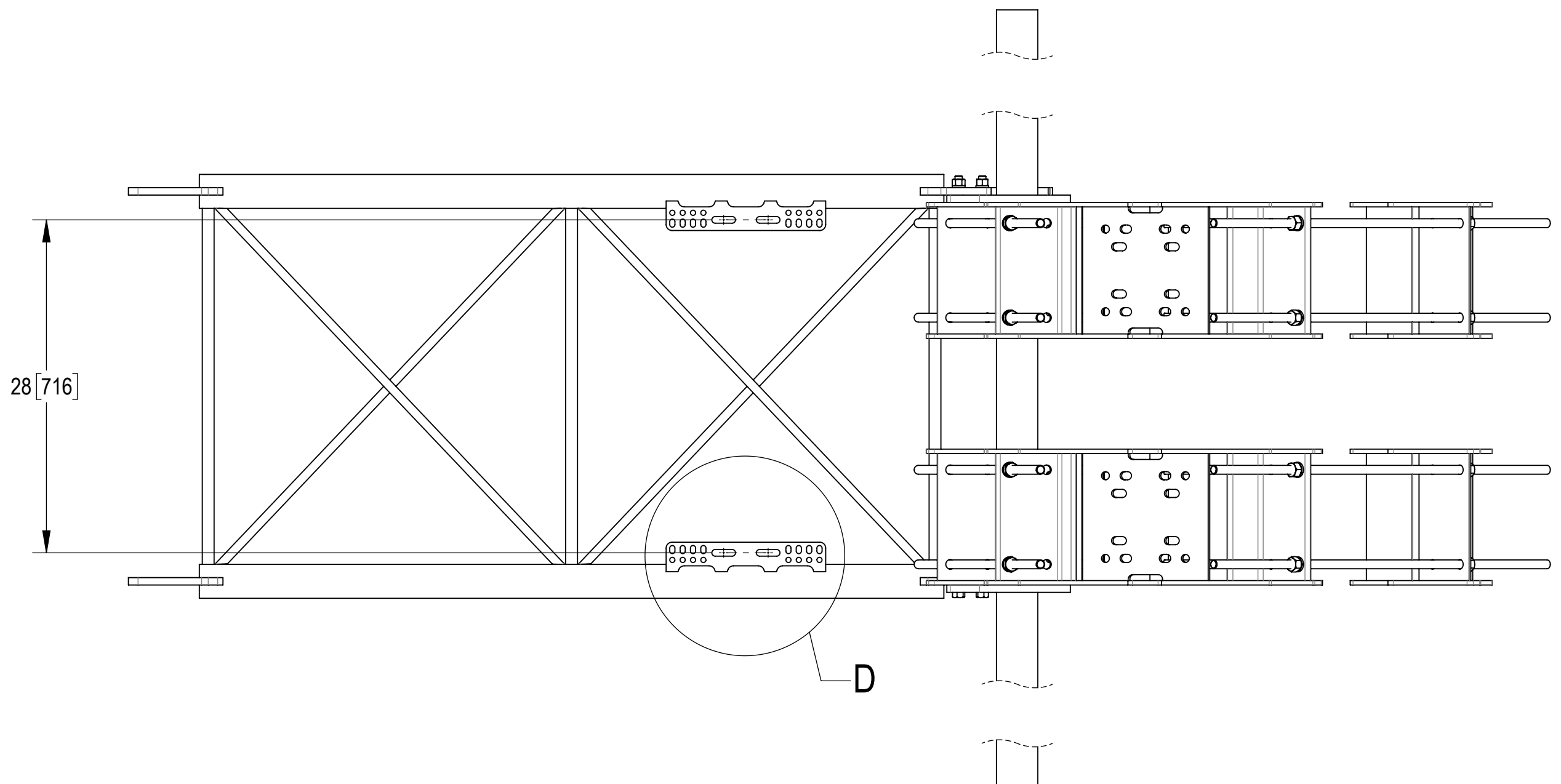
1

D

D

C

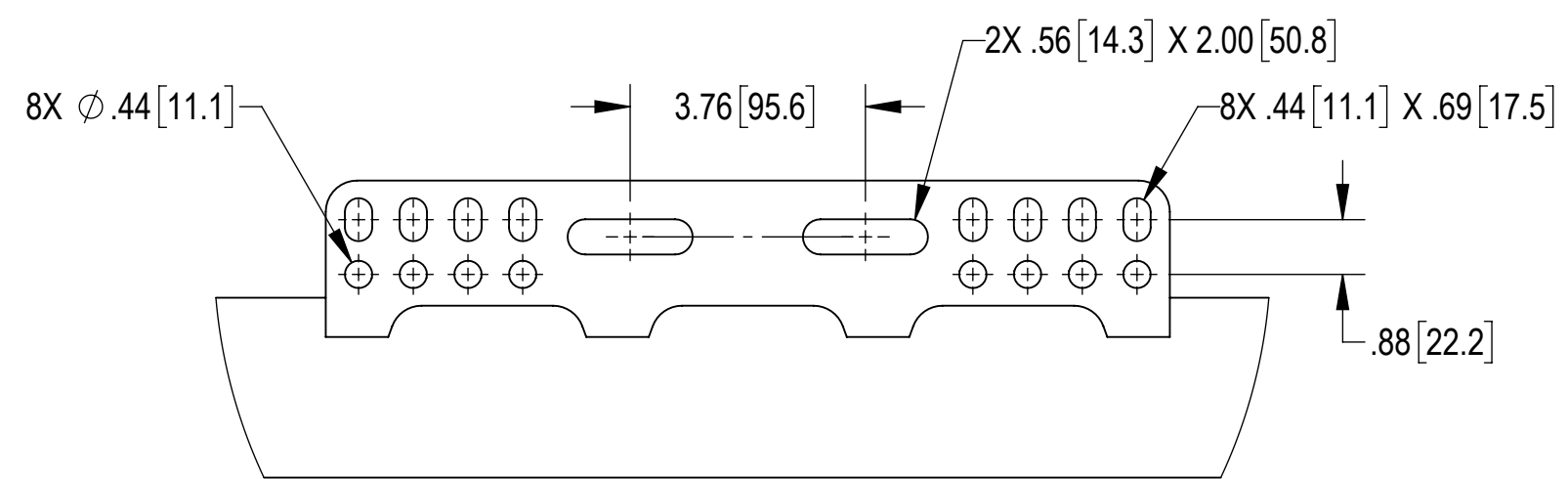
C



**SIDE VIEW**

B

B



**DETAIL D**  
SCALE 1 : 3

A

A



TITLE  
MONO 3 SCTR FR 15' FACE,(12) 126" ANT

SIZE <b>C</b>	SCALE <b>1:10</b>	DOCUMENT NO. MCG23RHDXL15M12126
------------------	----------------------	------------------------------------

 	DRAWING			SHEET 4 OF 5
	VERSION 01	STATUS RE	REVISION B	

Confidential

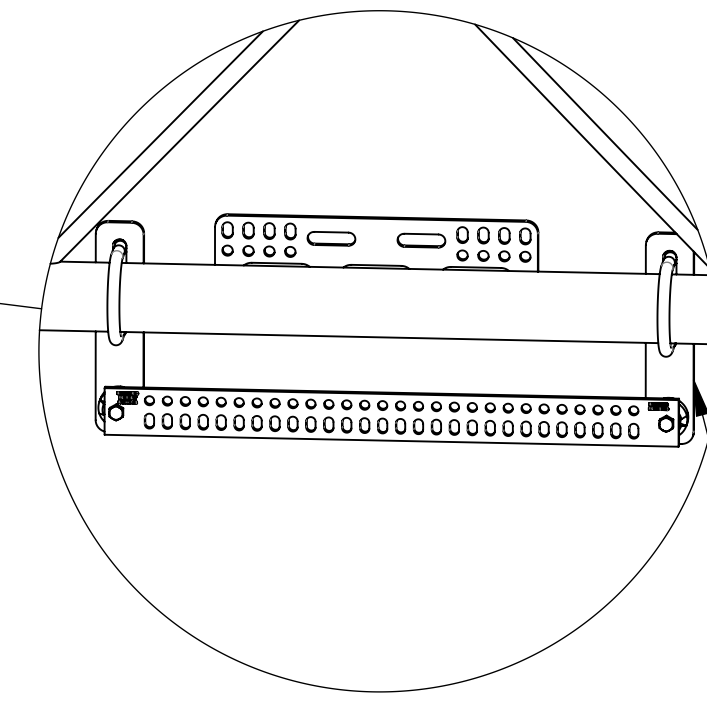
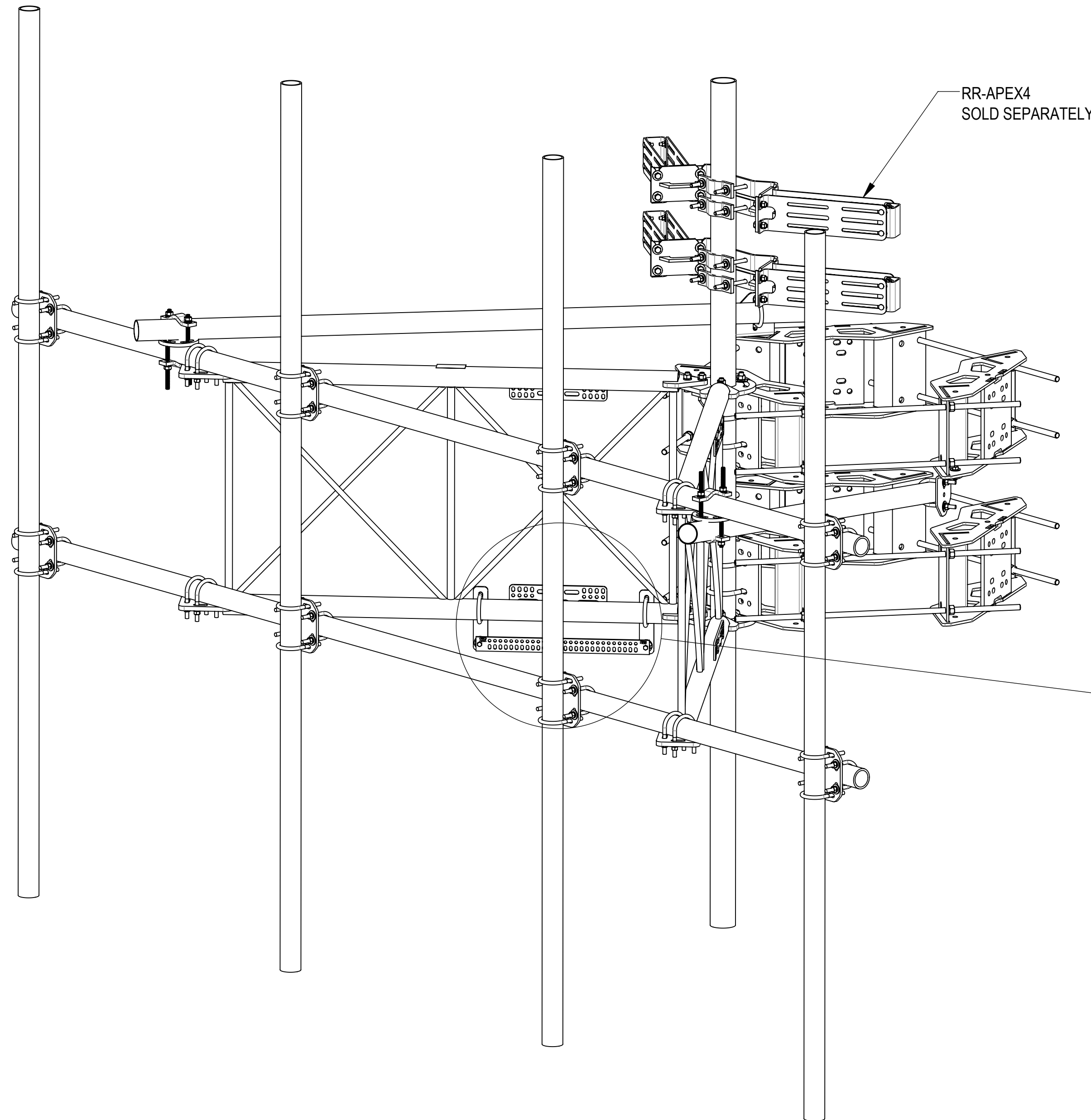
4

3



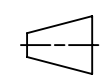
2

1

**OPTIONAL ACCESSORIES:**



**DETAIL H**  
SCALE 1 : 8

 <b>ANDREW</b> ® an Amphenol company				
TITLE <b>MONO 3 SCTR FR 15' FACE,(12) 126" ANT</b>				
SIZE <b>C</b>	SCALE <b>1:12</b>	DOCUMENT NO. <b>MCG23RHDXL15M12126</b>		
 		DRAWING		SHEET
		VERSION 01	STATUS RE	REVISION B

Confidential

4

3

2

1

D

D

C

C

B

B

A

A

4

3

2

1