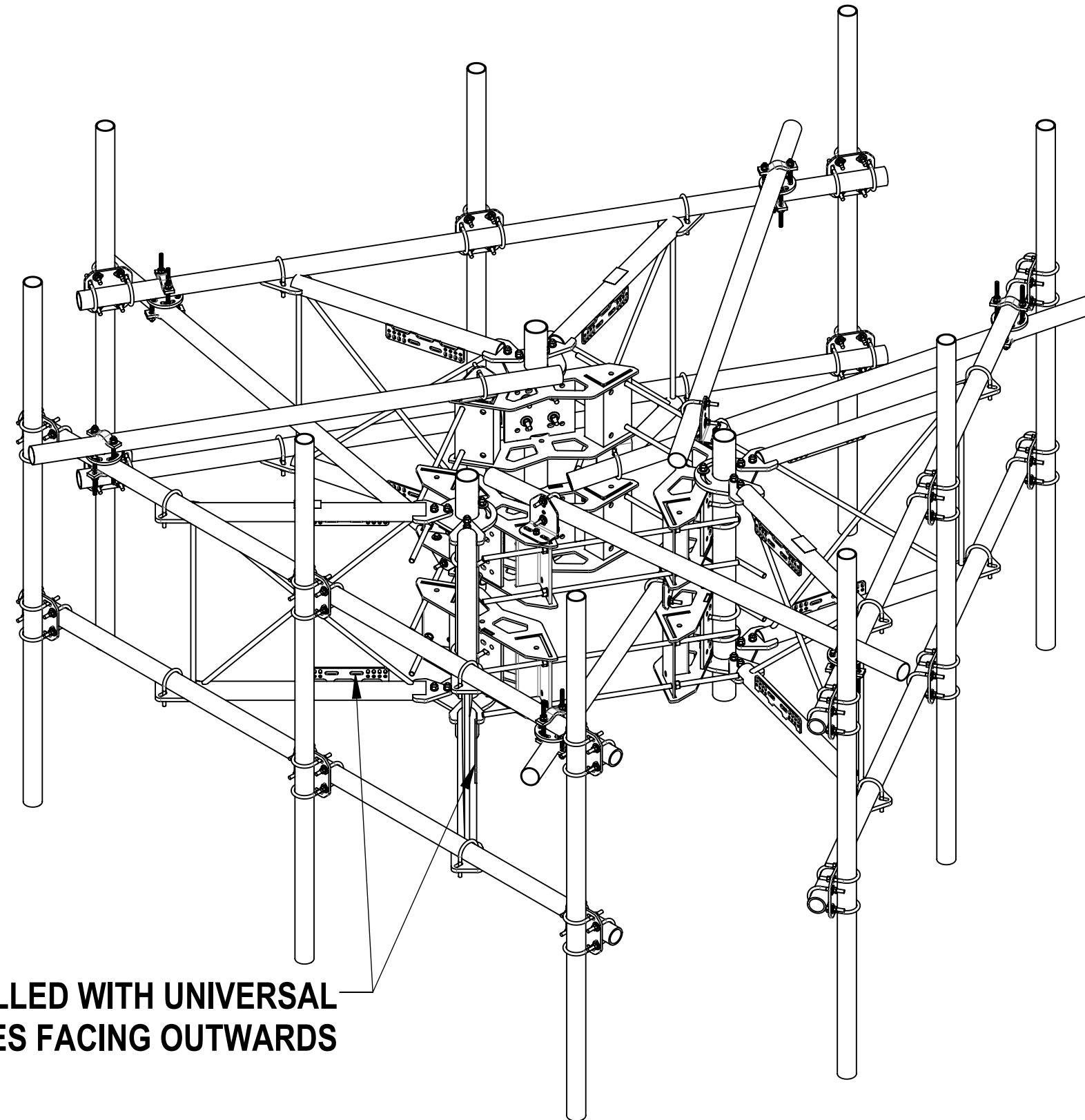


- 1.0 GENERAL NOTES
 1.1 ALL METRIC DIMENSIONS ARE IN BRACKETS [X. X]
 1.2 FOR PATENT INFO: <https://www.adwpat.com>
 2.0 DESIGN NOTES
 2.1 ANY HAZARDS OR OBSTRUCTIONS TO THE CLIMBING FACILITY AND SAFETY CLIMB MUST BE IDENTIFIED PRIOR TO INSTALLING THE APPURTENANCE. ADDITIONAL PRODUCTS MAY BE REQUIRED TO MAINTAIN THE INTEGRITY OF THE SAFETY CLIMB. DURING INSTALLATION, TEMPORARY AND/OR PERMANENT PRECAUTIONARY MEASURES SHOULD BE TAKEN TO PRESERVE THE CLIMBING FACILITY AND/OR SAFETY CLIMB.
 2.2 FITS MONOPOLES 15" TO 50" OD.
 2.3 MIN RECOMMENDED POLE THICKNESS 0.188[4.78].
 3.0 MANUFACTURING/SPECIAL REQUIREMENTS
 3.1 TIGHTEN ALL BOLTS SECURING FLAT PLATES BY THE TURN-OF-NUT METHOD. TIGHTEN ALL U-BOLTS USING TURN-OF-NUT METHOD WITH ATTENTION TO LEAVE EQUAL DISTANCE AND EQUAL FORCE ON EACH LEG OF THE U-BOLT.
 4.0 TEST
 5.0 PACKAGING
 5.1 PACKAGING SHALL MEET ANDREW REQUIREMENTS PER DOCUMENT IS-PL-3005.
 5.2 PRINTED DOCUMENT TO BE PLACED INSIDE POLYBAG AND THEN IN SHIPPING CONTAINER.
 5.3 EXTRA HARDWARE MAY BE SUPPLIED, BAGGED AND SHIPPED.


REVISIONS			
REV.	DESCRIPTION	DATE	APPROVED
B	UPDATE DRAWING TO REFLECT CORRECT PLACEMENT	ZX1005 17JAN22	40140303CMO
C	UPDATED THE SMALL CASE LETTER ON THE DRAWING NAME TO UPPERCASE LETTERS	YH1102 14MAR22	40144834CMO
D	MCG23HDX SERIES BOM STANDARDIZATION	JL1183 07JUN22	BA1025 40149022CMO
E	UPDATED DRAWING TO NEW FORMAT; CHANGED BOM STRUCTURE; MOVED LOCATION OF SFG2350 TO THE TOP OF STANDOFF ARM.	RY1002 10JAN24	YW1045 40185674CMO
F	UPDATED SFG23175 TO ADD UNIVERSAL INTERFACE PLATES	RY1002 04JUL24	XK1001 40199604CMO



SHOULD BE INSTALLED WITH UNIVERSAL INTERFACE PLATES FACING OUTWARDS

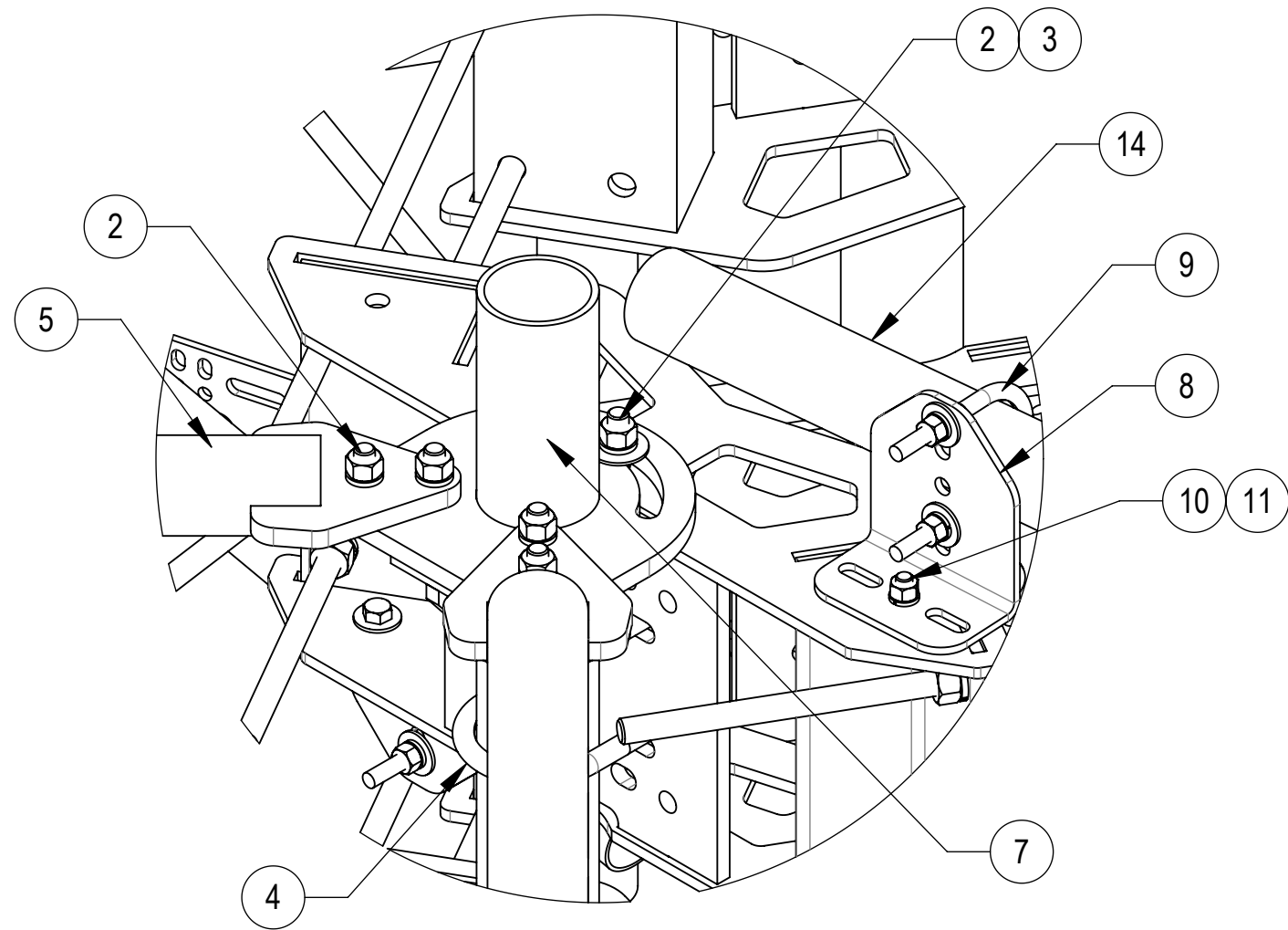
DENSITY		lbs/in ³
MASS	2316.14	lbs
VOLUME	17438.96	in ³
SURFACE AREA	105525.29	in ²
HEIGHT	96"	
LENGTH	161"	
WIDTH	140"	

Confidential

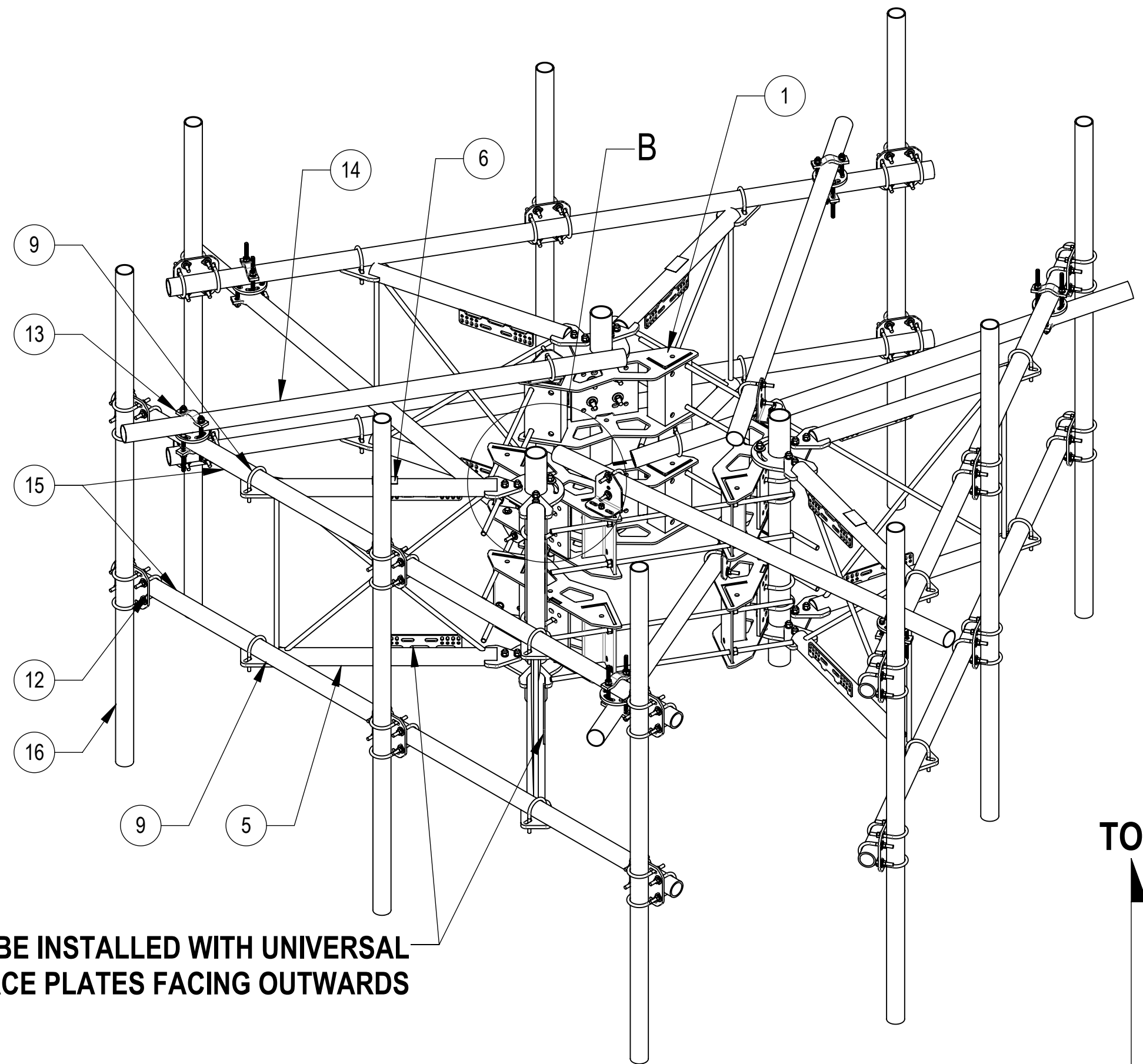


ANDREW® an Amphenol company

TOLERANCES		SAP MATERIAL MASTER	
1 PLACE .X[X] ± 0.2[5]	3 PLACE .XXX[X] ± 0.060[1.50]	MCG23HDX-10M996	
2 PLACE .XX[X] ± 0.12[3.0]	ANGLES ± 2°		
FINISH		MATERIAL	
<small>UNLESS OTHERWISE SPECIFIED DIMENSIONS ARE IN INCHES INTERPRET PER ANSI Y 14.5M-1994</small>		NAME	DATE
		CE JL1183	06/07/2022
		RW RY1002	06/19/2025
		AD YMENG	06/19/2025
ECN 40199604CMO		RE YMENG	06/19/2025
TITLE		SCALE	DOCUMENT NO.
G23HDX MP, 10' FACE, (9) 96" AP		1:20	MCG23HDX-10M996
SIZE	Auth Group	INSL	MODEL
C			
VERSION		DRAWING	
04	RE	E	05
STATUS		REVISION	
RE	E	RE	F
SHEET			1 OF 5



DETAIL B
SCALE 1 : 5



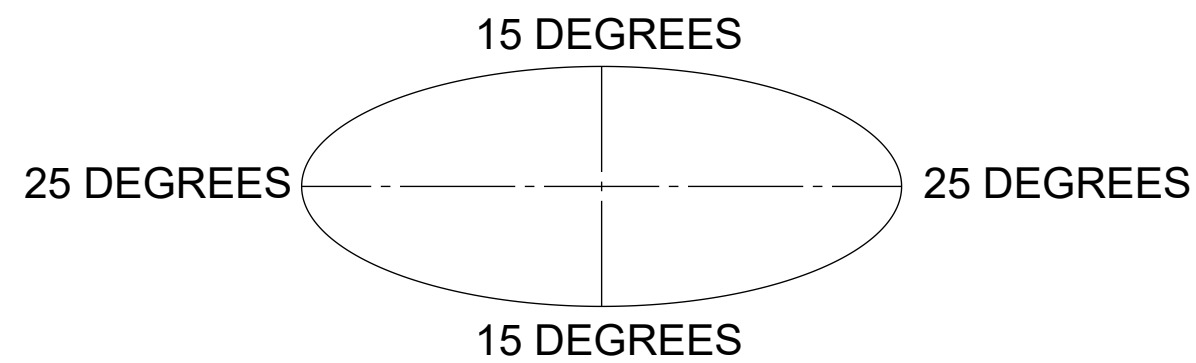
**SHOULD BE INSTALLED WITH UNIVERSAL
INTERFACE PLATES FACING OUTWARDS**

**COMPONENT PART NUMBERS PROVIDED FOR ASSEMBLY PURPOSES;
INDIVIDUAL COMPONENTS MAY BE SHIPPED AS PARTS WITHIN AN INCLUDED KIT.**

ITEM NO.	PART NUMBER	DESCRIPTION	QTY.	WEIGHT	NOTE NO.
1	MC-RM1550-3	15" - 50" OD RINGMOUNT	2	229.90 LBS	
2	GB-05225	5/8" X 2-1/4" GALV BOLT KIT	30	0.28 LBS	
3	GWF-05	5/8" GALV FLAT WASHER, 1.7OD	6	0.06 LBS	
4	GUB-53560	5/8" X 3-5/8" X 6" GALV U-BOLT	12	1.30 LBS	
5	SFG23175	ARM, STANDOFF - SFG23	6	66.61 LBS	
6	SFG2350	LABEL, SFG23HDX	3	0.03 LBS	
7	SFG2206	ARM MOUNT WELDMENT	3	51.60 LBS	
8	XAU01	ANGLE, CROSSOVER, 1.9-3.5" X 1.9-3.5" OD	6	2.98 LBS	
9	GUB-4352	1/2" X 3" X 5-1/4" GALV U-BOLT	18	0.71 LBS	
10	GB-04145	1/2" X 1-1/2" GALV BOLT KIT	6	0.13 LBS	
11	GWF-04	1/2" GALV FLAT WASHER	6	0.04 LBS	
12	XP-2525	CROSSOVER PLATE KIT, 2-7/8 OD X 2-7/8 OD	18	8.37 LBS	
13	XP-R	CROSSOVER PLATE, ROUND, UP TO 3.5" OD	6	6.20 LBS	
14	MT546084120	2.88" OD X 84" LONG PIPE	6	24.81 LBS	
15	MT546126276	PIPE, 2.875"OD X 126"	6	80.73 LBS	
16	MT54696	PIPE, 2.875"OD X 96"	9	45.96 LBS	

ALLOWABLE TIEBACK ANGLE

+15 DEGREES VERTICAL
±25 DEGREES HORIZONTAL



TITLE
G23HDX MP, 10' FACE, (9) 96" AP

SIZE **C** SCALE **1:32** DOCUMENT NO.
MCG23HDX-10M996

DRAWING			SHEET 2 OF 5
VERSION	STATUS	REVISION	
05	RE	F	

Confidential

4

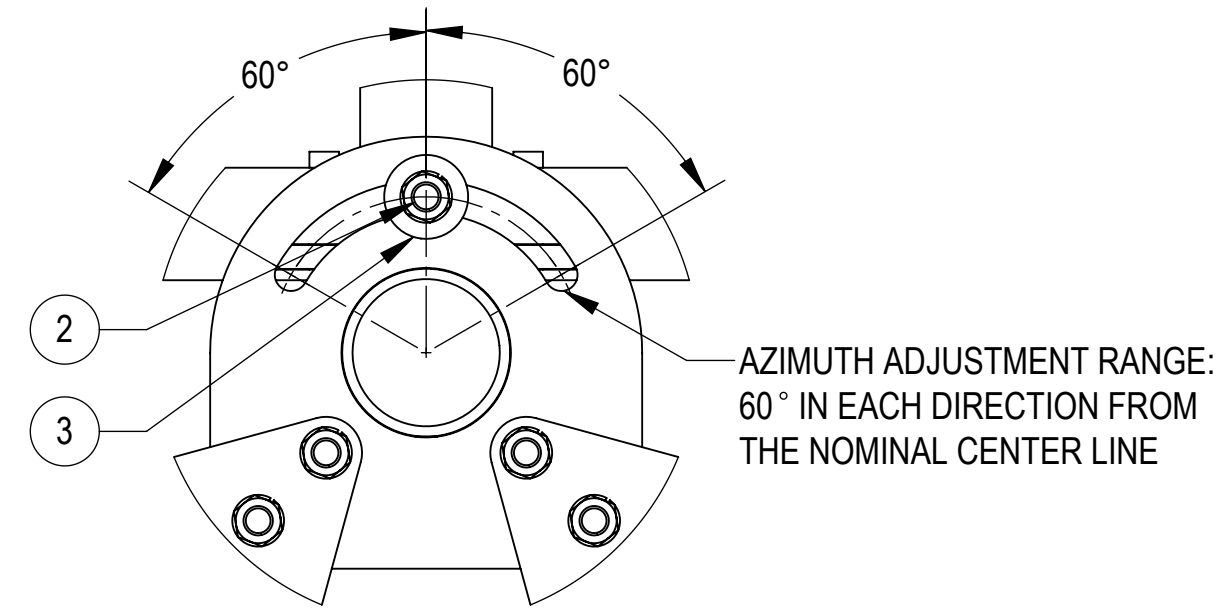
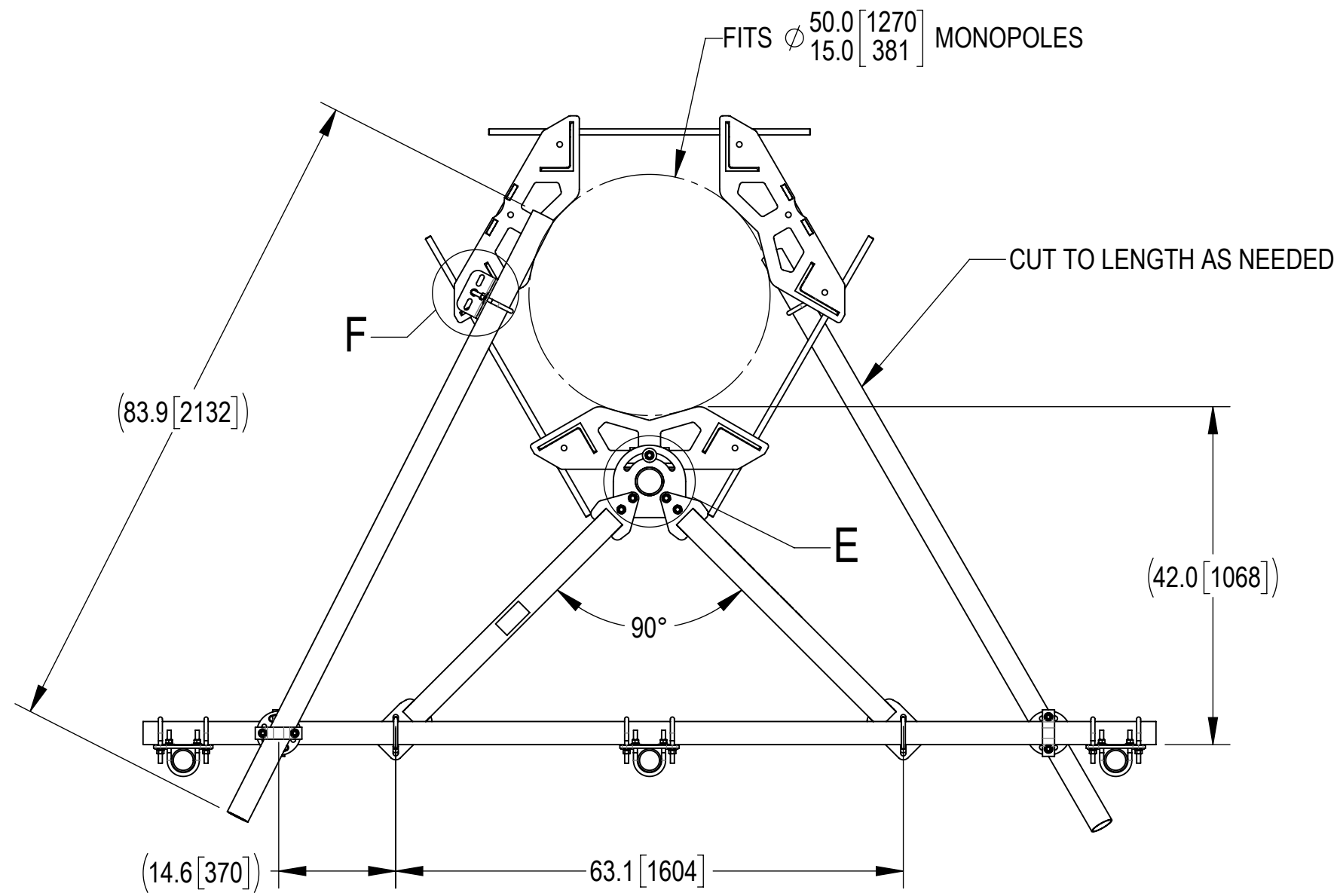
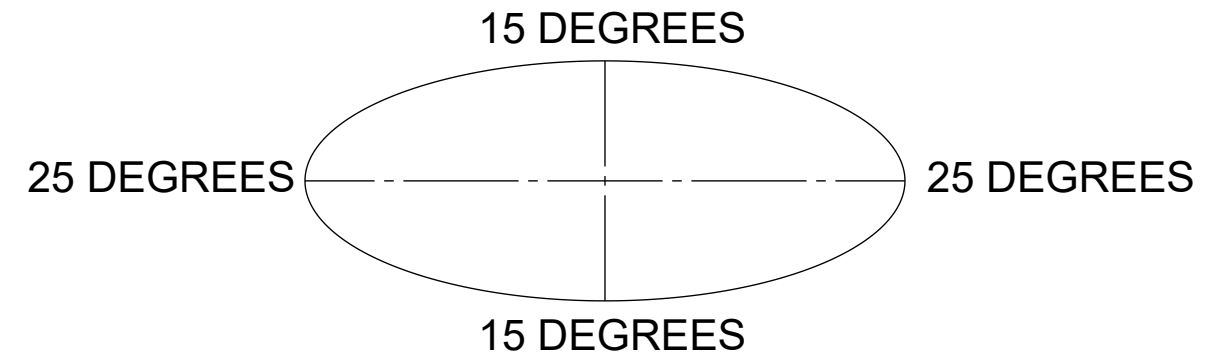
3

2

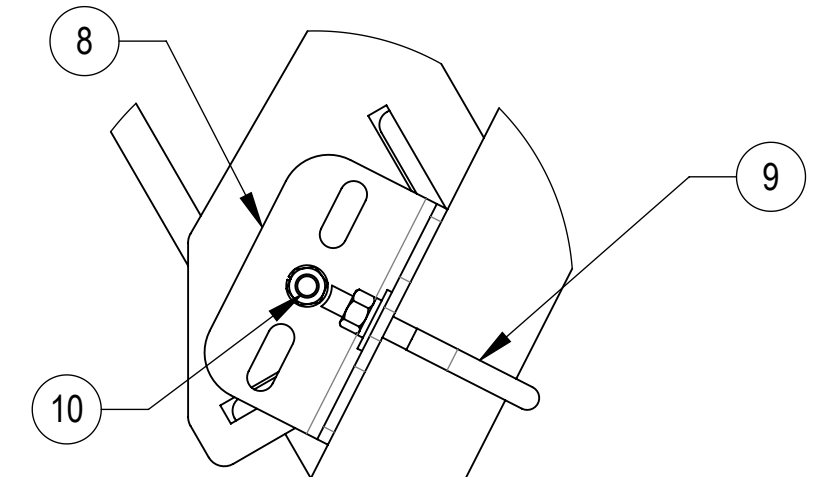
1

ALLOWABLE TIEBACK ANGLE

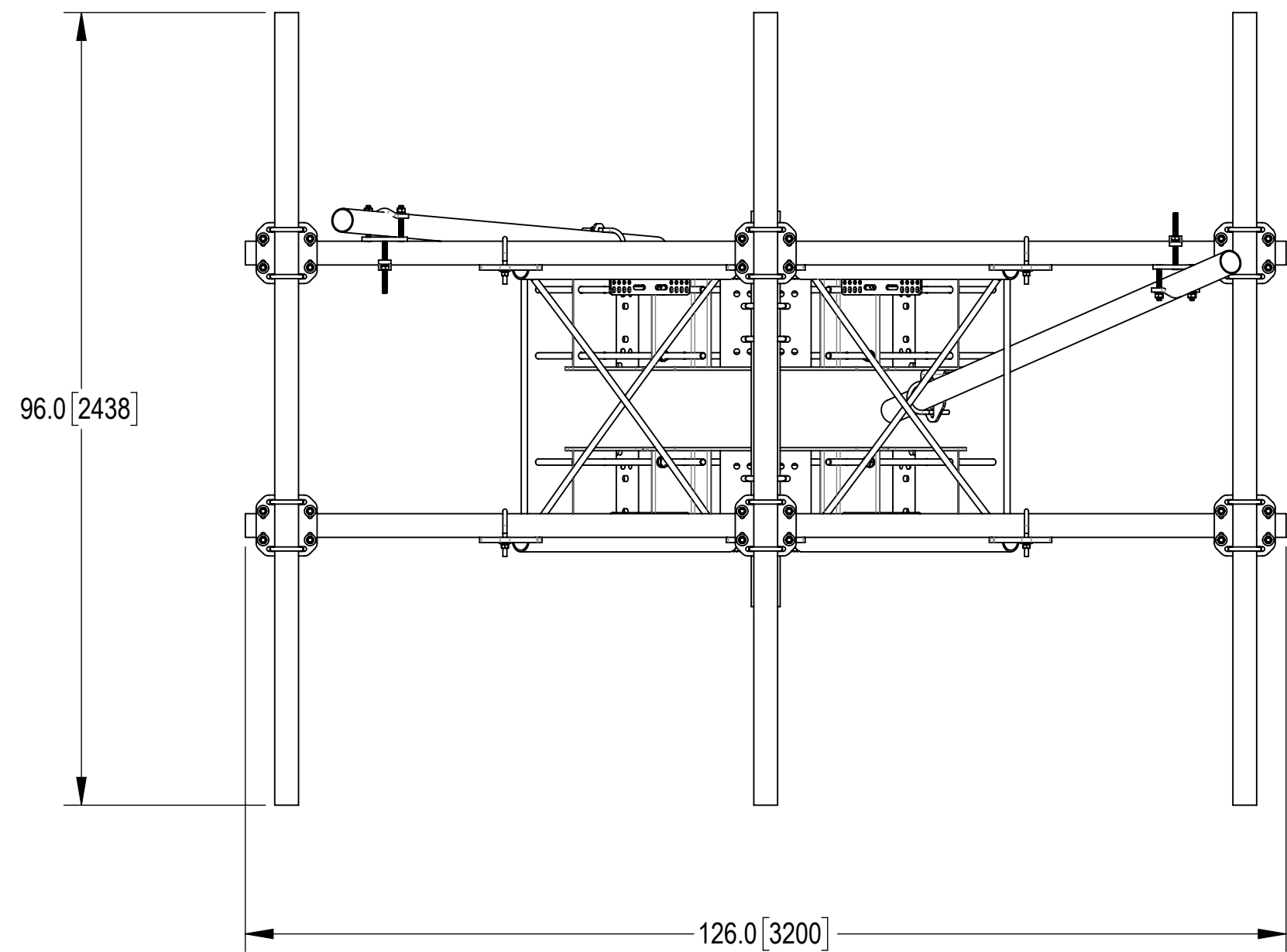
±15 DEGREES VERTICAL
±25 DEGREES HORIZONTAL



DETAIL E
SCALE 1 : 4



DETAIL F
SCALE 1 : 4

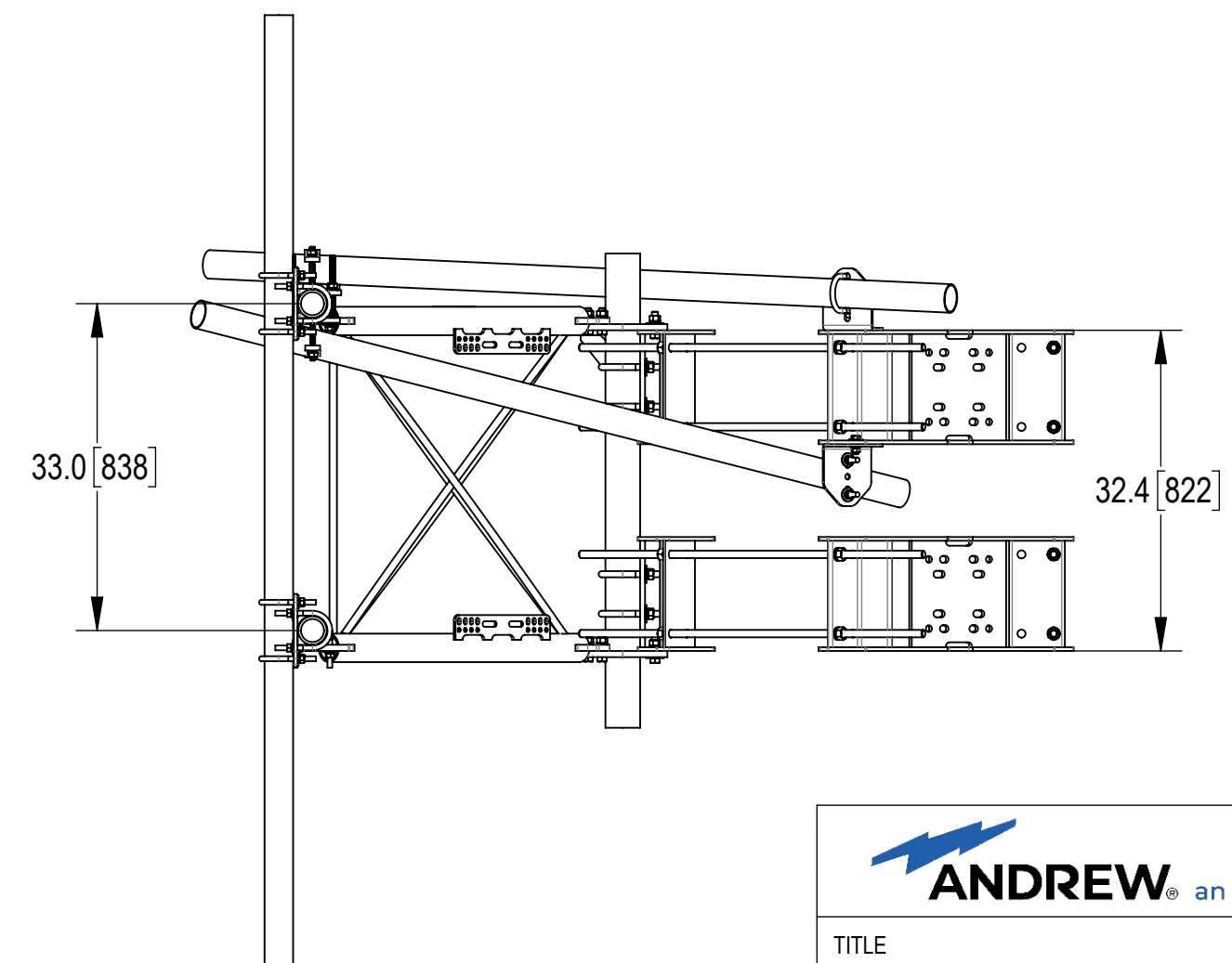


TOP

↑

BOTTOM

↓



SINGLE SECTOR SHOWN FOR REFERENCE



TITLE
G23HDX MP, 10' FACE, (9) 96" AP

SIZE C	SCALE 1:32	DOCUMENT NO. MCG23HDX-10M996
------------------	----------------------	---------------------------------

DRAWING			SHEET 3 OF 5
VERSION	STATUS	REVISION	
05	RE	F	

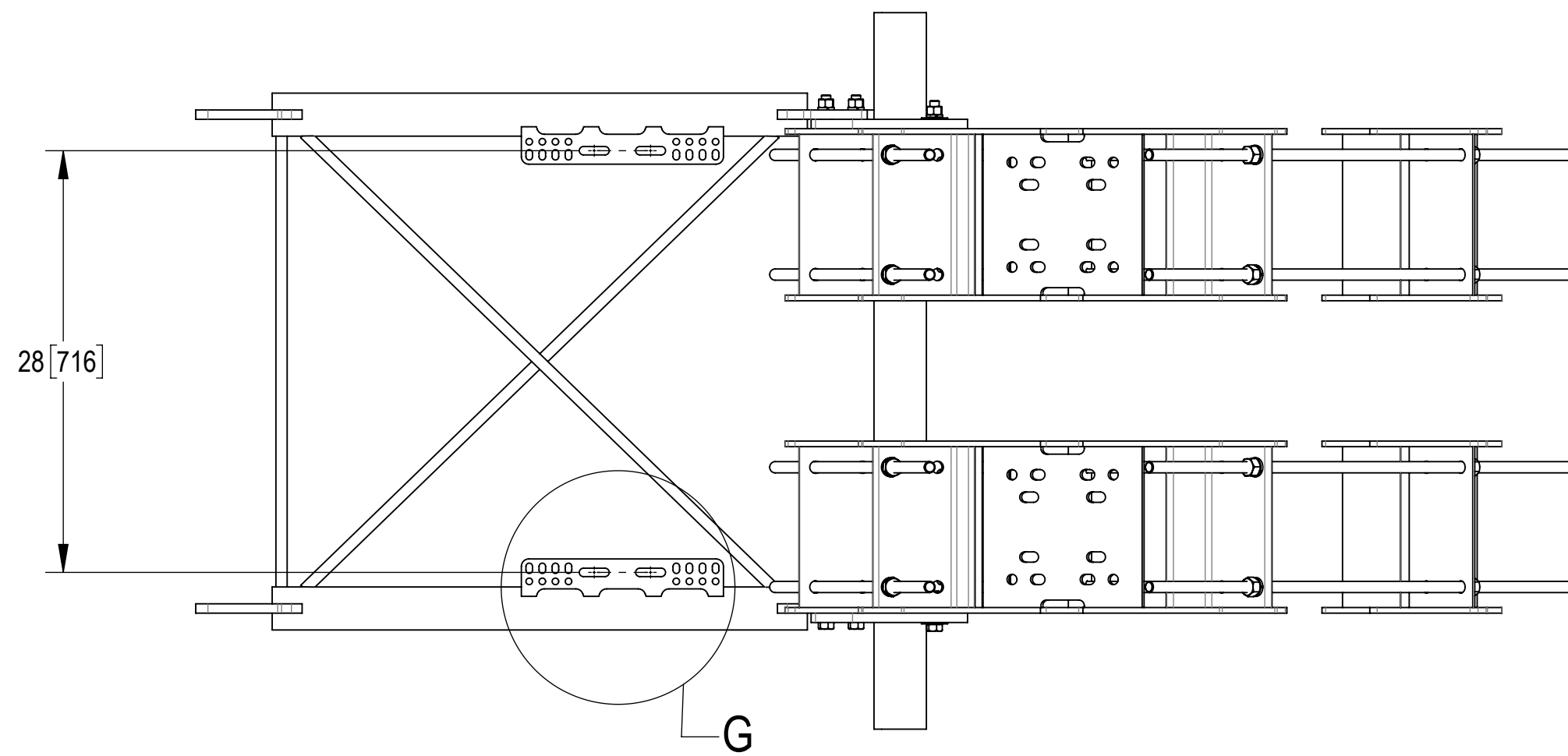
Confidential

4

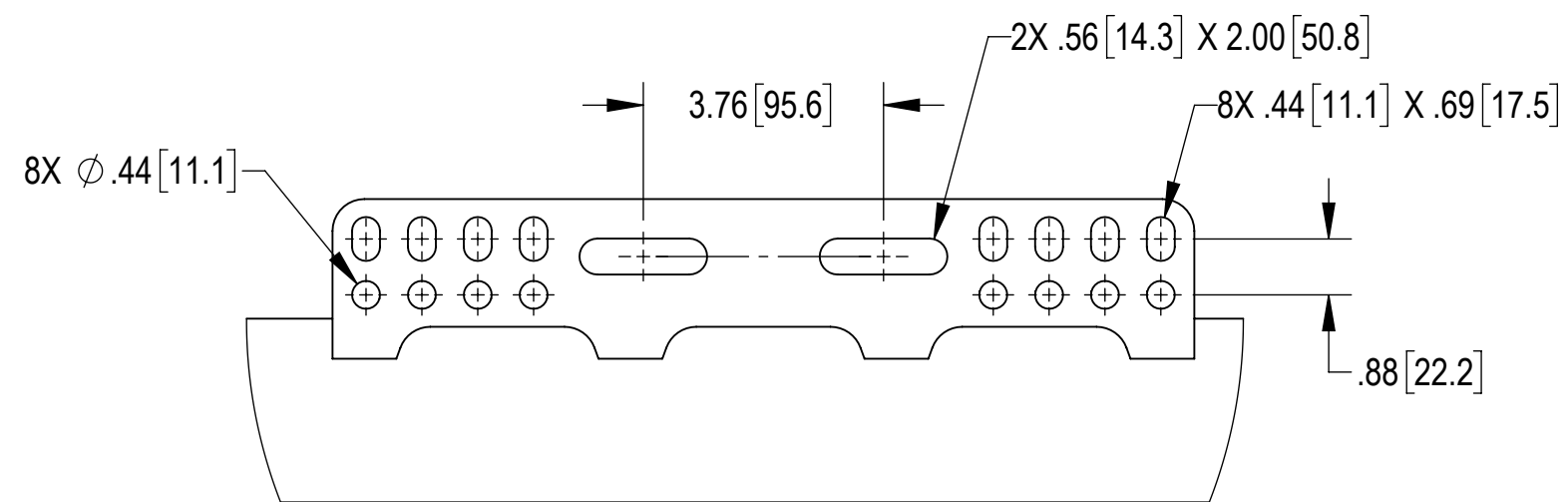
3

2

1



SIDE VIEW



DETAIL G
SCALE 1 : 3



TITLE
G23HDX MP, 10' FACE, (9) 96" AP

SIZE C	SCALE 1:10	DOCUMENT NO. MCG23HDX-10M996
------------------	----------------------	---------------------------------

	DRAWING			SHEET 4 OF 5
	VERSION 05	STATUS RE	REVISION F	

Confidential

4

3

2

1

D

D

C

C

B

B

A

A

4

3

2

1

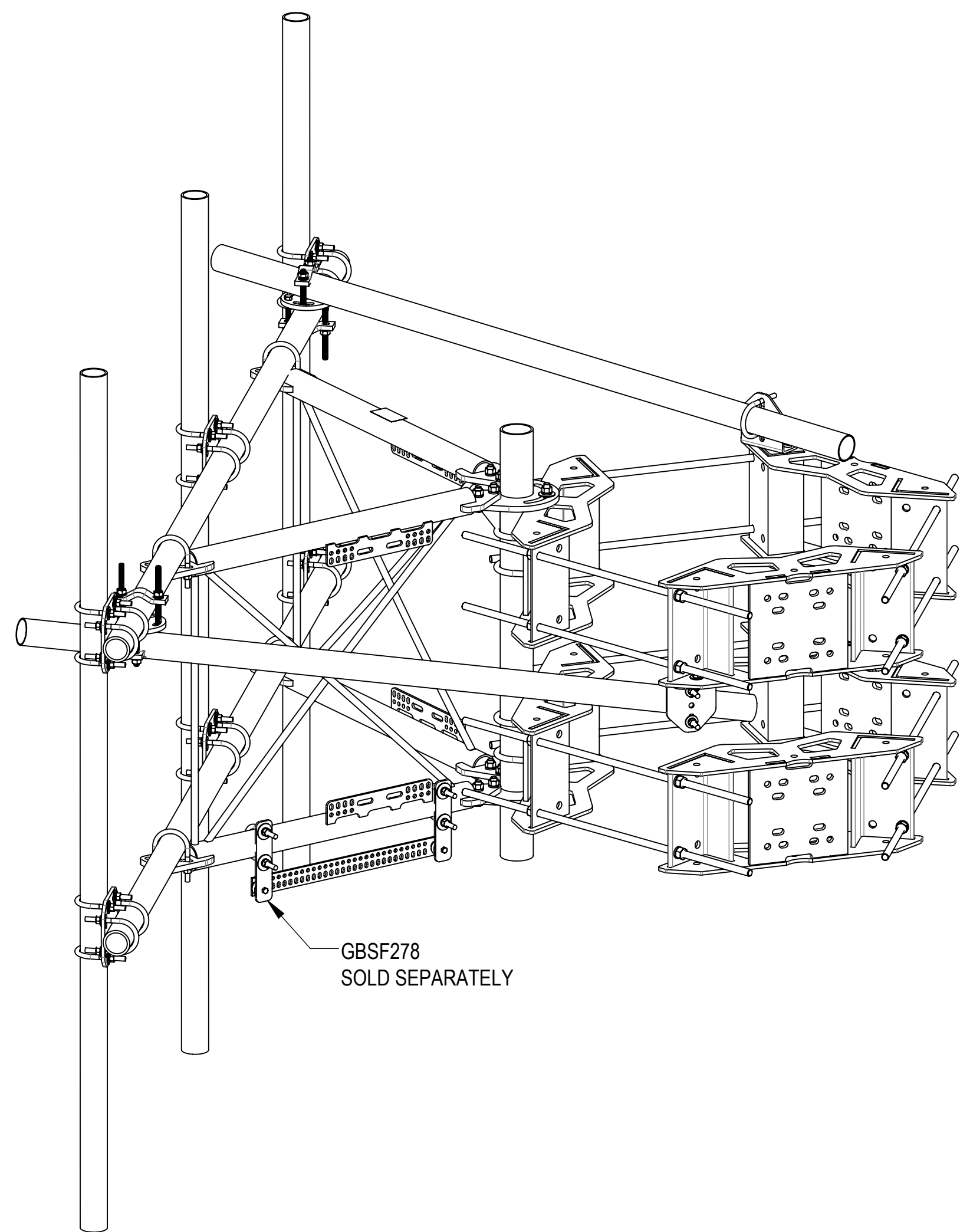
4

3

2

1

OPTIONAL ACCESSORIES:

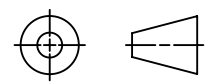


GBSF278
SOLD SEPARATELY



TITLE				
G23HDX MP, 10' FACE, (9) 96" AP				
SIZE	SCALE	DOCUMENT NO.		
C	1:32	MCG23HDX-10M996		
		DRAWING		
		VERSION	STATUS	REVISION
		05	RE	F
				SHEET
				5 OF 5

Confidential



4

3

2

1

D

D

C

C

B

B

A

A