

4

3

2

1

- 1.0 GENERAL NOTES  
 1.1 ALL METRIC DIMENSIONS ARE IN BRACKETS [X. X]  
 1.2 FOR PATENT INFO: <https://www.adwpat.com>

- 2.0 DESIGN NOTES  
 2.1 ANY HAZARDS OR OBSTRUCTIONS TO THE CLIMBING FACILITY AND SAFETY CLIMB MUST BE IDENTIFIED PRIOR TO INSTALLING THE APPURTENANCE. ADDITIONAL PRODUCTS MAY BE REQUIRED TO MAINTAIN THE INTEGRITY OF THE SAFETY CLIMB. DURING INSTALLATION, TEMPORARY AND/OR PERMANENT PRECAUTIONARY MEASURES SHOULD BE TAKEN TO PRESERVE THE CLIMBING FACILITY AND/OR SAFETY CLIMB.

2.2 UP TO 7.2° TAPER AVAILABLE ON MODELS THAT SUPPORT ADJUSTMENT.

3.0 MANUFACTURING/SPECIAL REQUIREMENTS

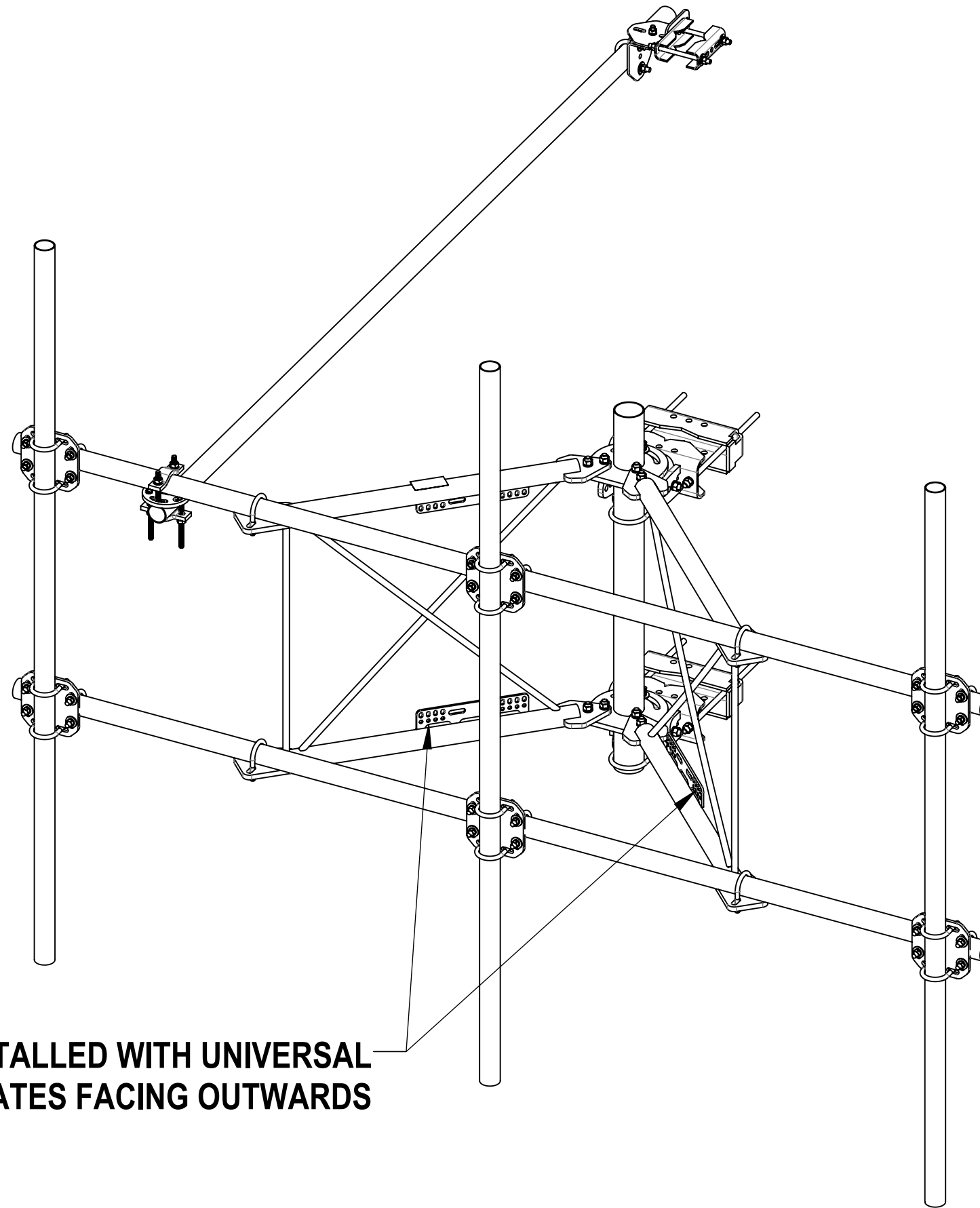
- 3.1 TIGHTEN ALL BOLTS SECURING FLAT PLATES BY THE TURN-OF-NUT METHOD. TIGHTEN ALL U-BOLTS USING TURN-OF-NUT METHOD WITH ATTENTION TO LEAVE EQUAL DISTANCE AND EQUAL FORCE ON EACH LEG OF THE U-BOLT.

4.0 TEST

5.0 PACKAGING

- 5.1 PACKAGING SHALL MEET ANDREW REQUIREMENTS PER DOCUMENT IS-PL-3005  
 5.2 PRINTED DOCUMENT TO BE PLACED INSIDE POLYBAG AND THEN IN SHIPPING CONTAINER  
 5.3 EXTRA HARDWARE MAY BE SUPPLIED, BAGGED AND SHIPPED

REVISIONS			
REV.	DESCRIPTION	DATE	APPROVED
K	BOM STANDARDIZATION	YH1102 2APR22	BCROSS 40146174CMO
L	SFG2290-00 WAS SFG2270, SFG2292-00 WAS SFG2278	YMENG 21FEB23	BA1025 40165670CMO
M	SFG2270 WAS SFG2290-00, SFG2278 WAS SFG2292-00; ADDED SFG2250 TO THE TOP OF V-ARM	RY1002 12SEP23	YW1045 40178978CMO
N	SFG2292-00 WAS SFG2278; ADDED SHEET 4 & 5	RY1002 04NOV24	YZ1080 40208034CMO



**SHOULD BE INSTALLED WITH UNIVERSAL INTERFACE PLATES FACING OUTWARDS**



TOLERANCES		SAP MATERIAL MASTER	
1 PLACE .X[X] ± 0.25[6.3]	3 PLACE .XXX[X] ± 0.060[1.5]	<b>SFG22-10-3-96</b>	
2 PLACE .XX[X] ± 0.12[3.0]	ANGLES ± 2°		
FINISH		MATERIAL	
UNLESS OTHERWISE SPECIFIED DIMENSIONS ARE IN INCHES INTERPRET PER ANSI Y 14.5M-1994		TITLE	
CE YH1102	4/22/2022	<b>SECTOR FRAME 10' FACE, (3) 96" ANT</b>	
RW RY1002	06/05/2025		
AD YMENG	06/05/2025		
RE YMENG	06/05/2025		
ECN 40208034CMO		SCALE	DOCUMENT NO.
		<b>1:24</b>	<b>SFG22-10-3-96</b>
SIZE	Auth Group	INSL	MODEL
<b>C</b>			
DRAWING		SHEET	
VERSION	STATUS	REVISION	VERSION
03	RE	N	03
REVISION		REVISION	
		N	
			1 OF 5

DENSITY		lbs/in³
MASS	480.32	lbs
VOLUME	1696.77	in³
SURFACE AREA	18715.19	in²
HEIGHT	96"	
LENGTH	126"	
WIDTH	126"	

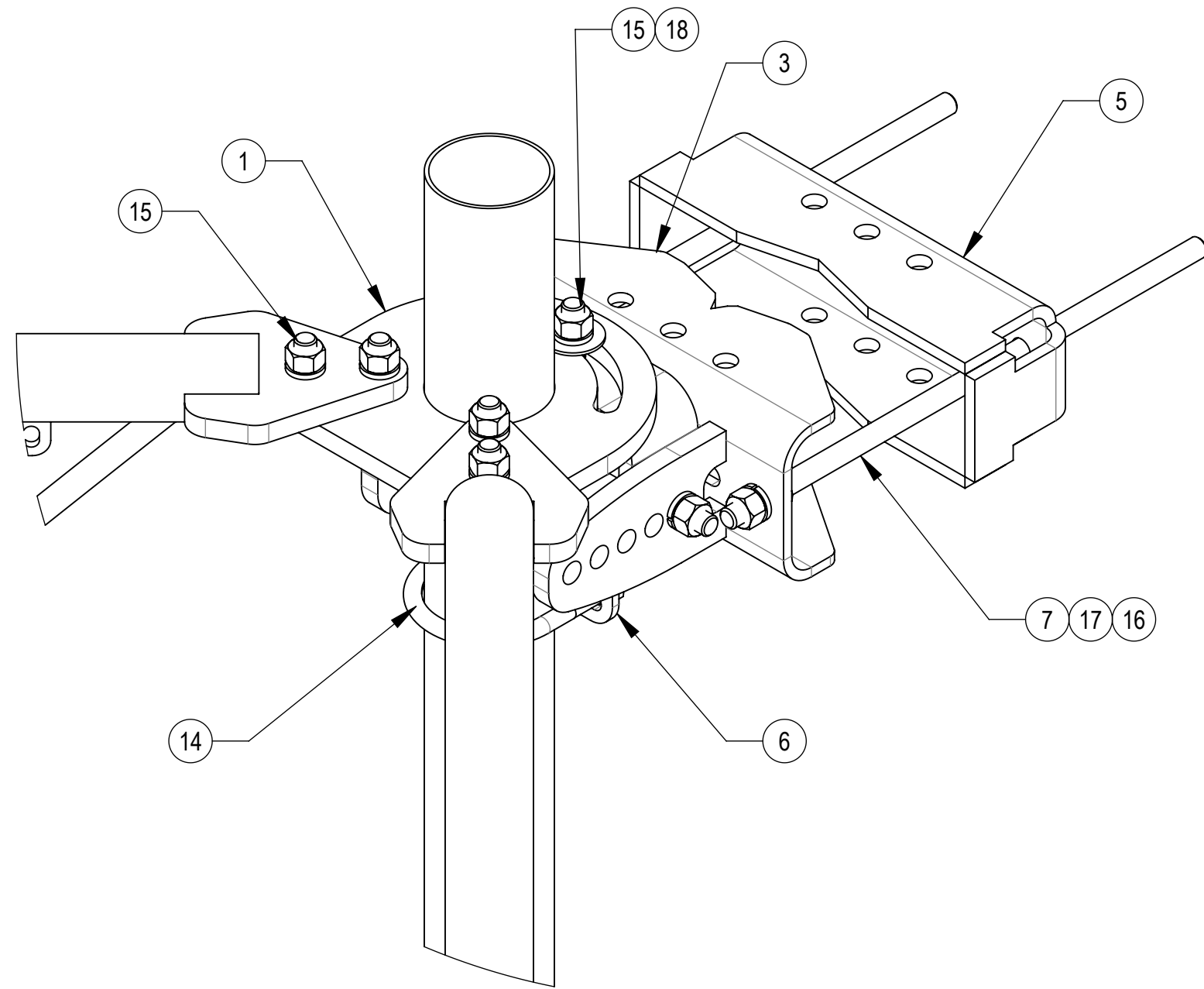
Confidential

4

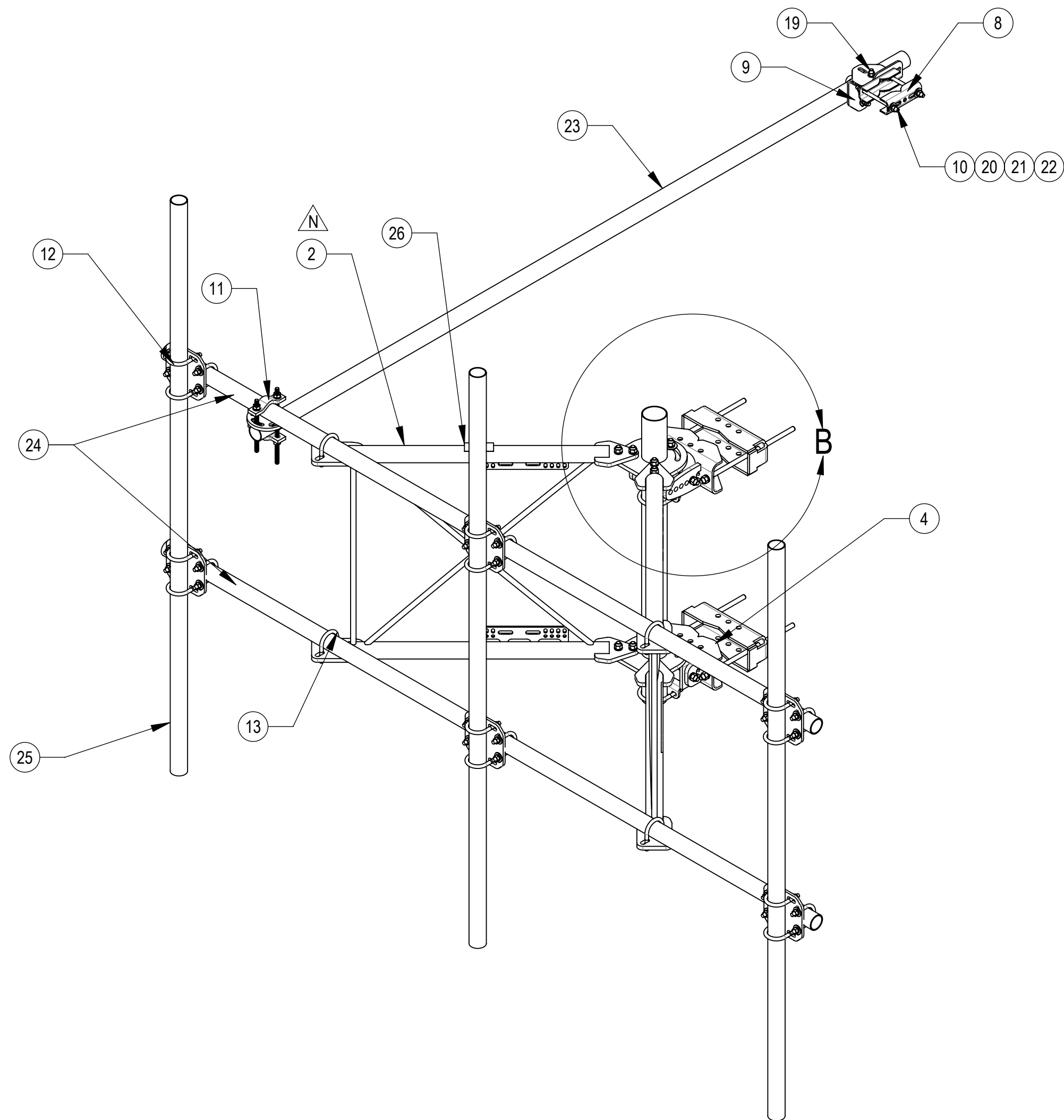
3

2

1



**DETAIL B**  
SCALE 1 : 4

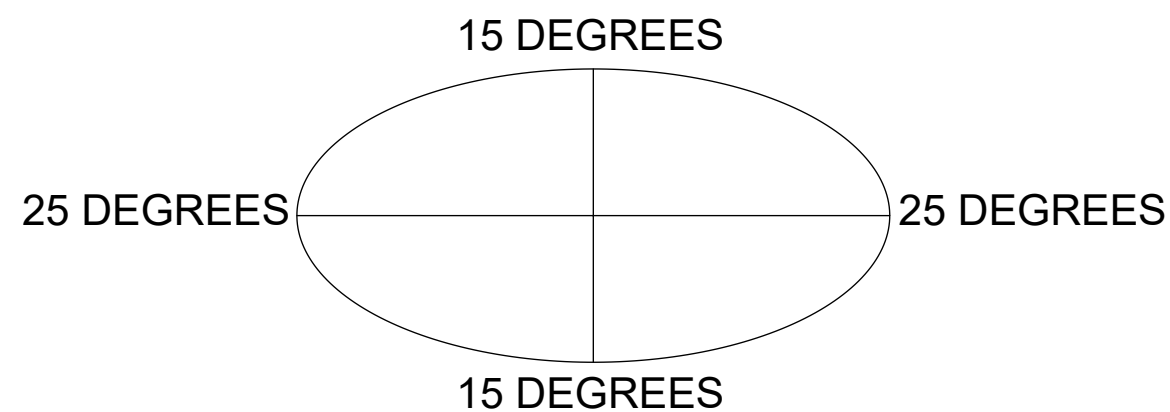


**COMPONENT PART NUMBERS PROVIDED FOR ASSEMBLY PURPOSES;  
INDIVIDUAL COMPONENTS MAY BE SHIPPED AS PARTS WITHIN AN INCLUDED KIT.**

ITEM	PART NO.	DESCRIPTION	QTY.	WEIGHT	NOTE NO.
1	SFG2270	BACK VERTICAL ARM MOUNT	1	39.26 LBS	
2	SFG2292-00	WELDMENT, V-ARM, SECTOR FRAME 22	2	49.69 LBS	
3	SFG2345	WELDMENT, TOP TAPER BRACKET	1	16.32 LBS	
4	SFG2343	WELDMENT, LOWER, TOWER LEG BRACKET	1	12.41 LBS	
5	SFG2284	BRACKET, FRONT TOWER LEG, BARE	2	14.69 LBS	
6	SFG2237	WELDMENT, AZIMUTH/TAPER BRACKET	2	6.46 LBS	
7	MT-382-18	5/8" X 18" GALV THREADED ROD	4	1.55 LBS	
8	SAB01	FORMED CLAMP	2	1.35 LBS	
9	XAU01	ANGLE, CROSSOVER, 1.9-3.5" X 1.9-3.5" OD	2	2.98 LBS	
10	MT-379-8	1/2" X 8" GALV THREADED ROD	2	0.45 LBS	
11	XP-R	CROSSOVER PLATE, ROUND, UP TO 3.5" OD	1	6.20 LBS	
12	XP-2020	CROSSOVER PLATE KIT, 2-3/8 OD X 2-3/8 OD	6	7.77 LBS	
13	GUB-4240	1/2" X 2-1/2" X 4" GALV U-BOLT	5	0.56 LBS	
14	GUB-4355	1/2" X 3-5/8" X 5" GALV U-BOLT	2	0.71 LBS	
15	GB-05225	5/8" X 2-1/4" GALV BOLT KIT	14	0.28 LBS	
16	GN-05	5/8" GALV HEX NUT	12	0.08 LBS	
17	GWL-05	5/8" GALV LOCK WASHER	8	0.03 LBS	
18	GWF-05	5/8" GALV FLAT WASHER, 1.7OD	2	0.06 LBS	
19	GB-04145	1/2" X 1-1/2" GALV BOLT KIT	1	0.13 LBS	
20	GN-04	1/2" GALV HEX NUT	5	0.04 LBS	
21	GWL-04	1/2" GALV LOCK WASHER	5	0.01 LBS	
22	GWF-04	1/2" GALV FLAT WASHER	4	0.04 LBS	
23	MT-537	2.375" OD x 126" PIPE	1	30.45 LBS	
24	MT651126154	2.375" O.D. X 126" PIPE	2	23.05 LBS	
25	MT-651-96	2.375" OD X 96" PIPE	3	23.05 LBS	
26	SFG2250	LABEL, SFG22	1	0.04 LBS	

**RECOMMENDED TIEBACK ANGLE**

± 15 DEGREES VERTICAL  
± 25 DEGREES HORIZONTAL

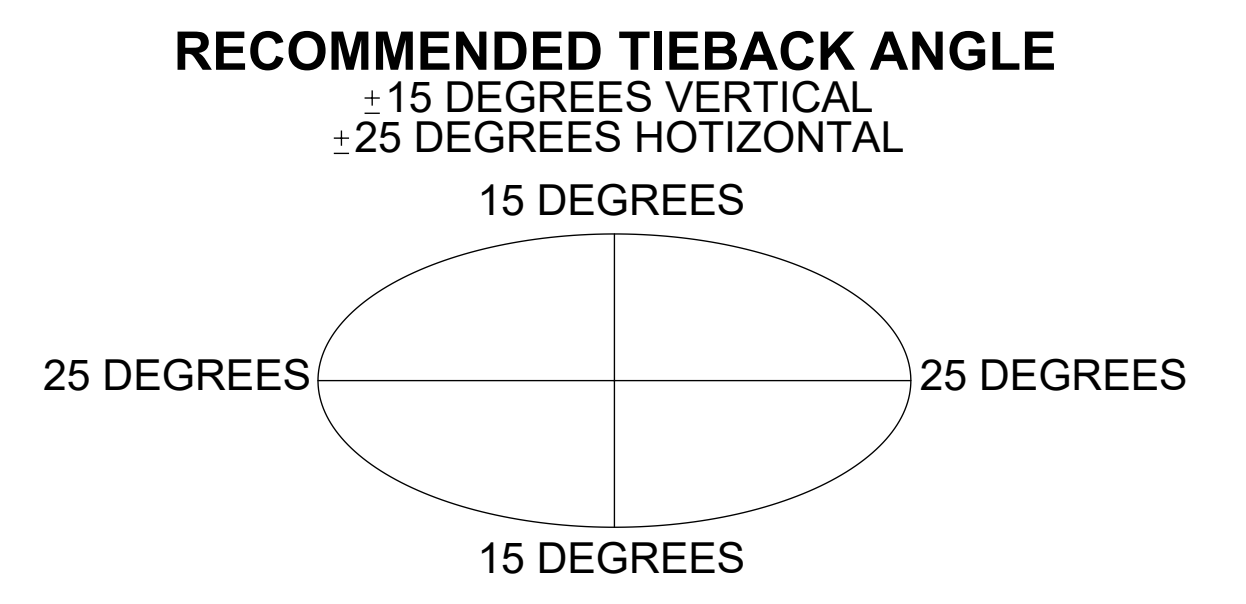
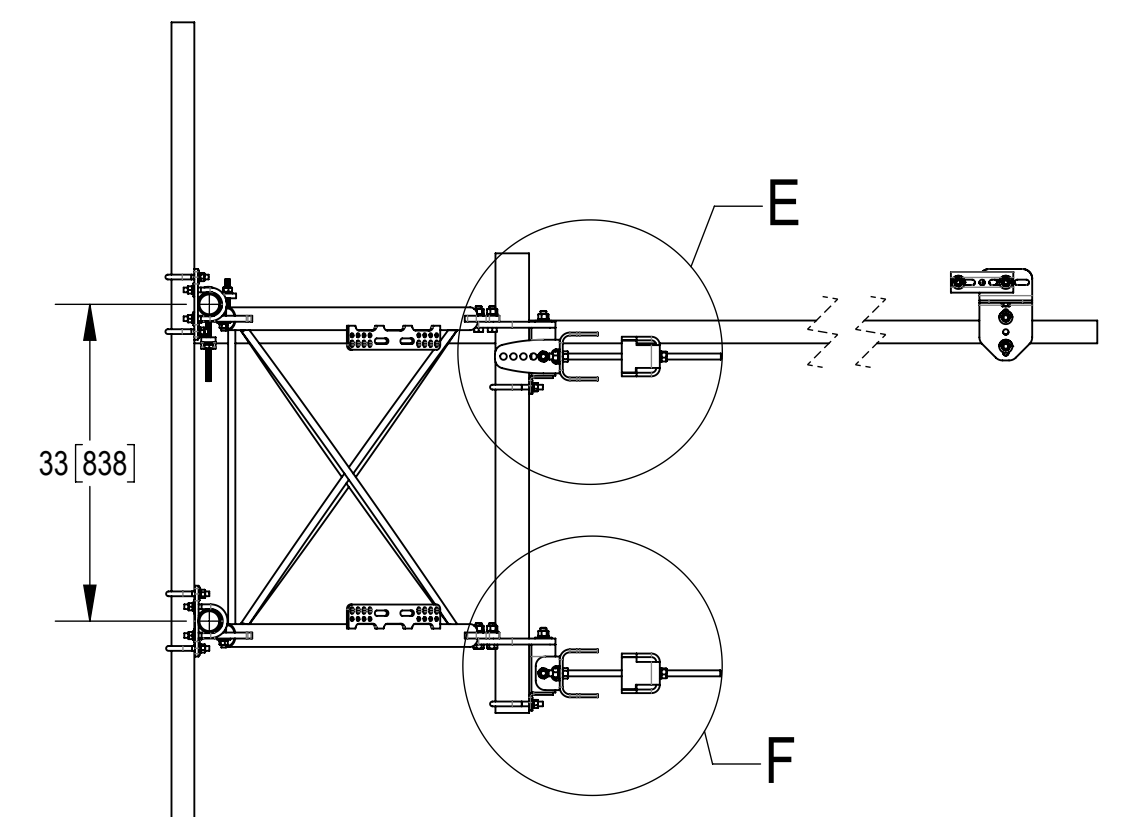
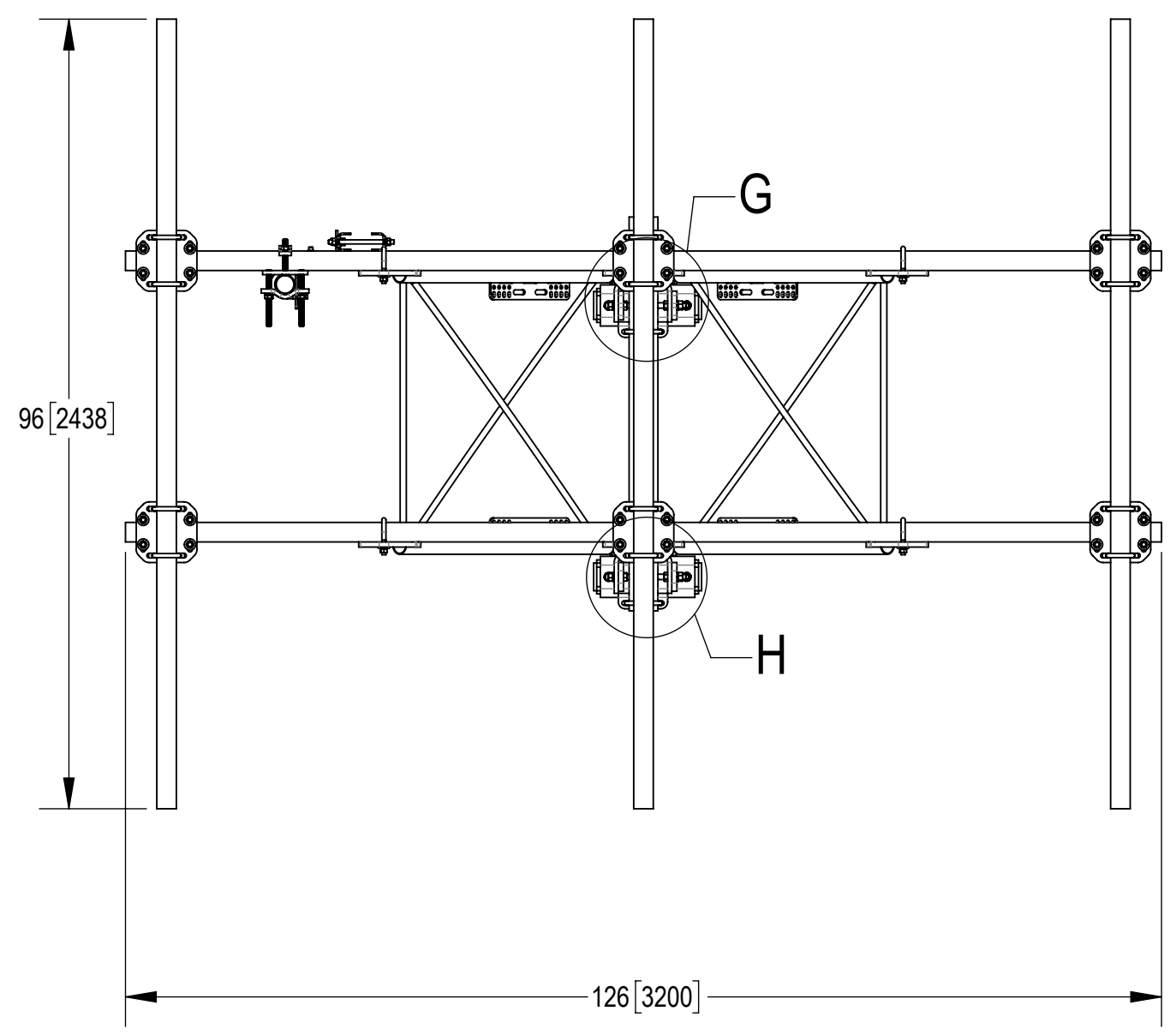
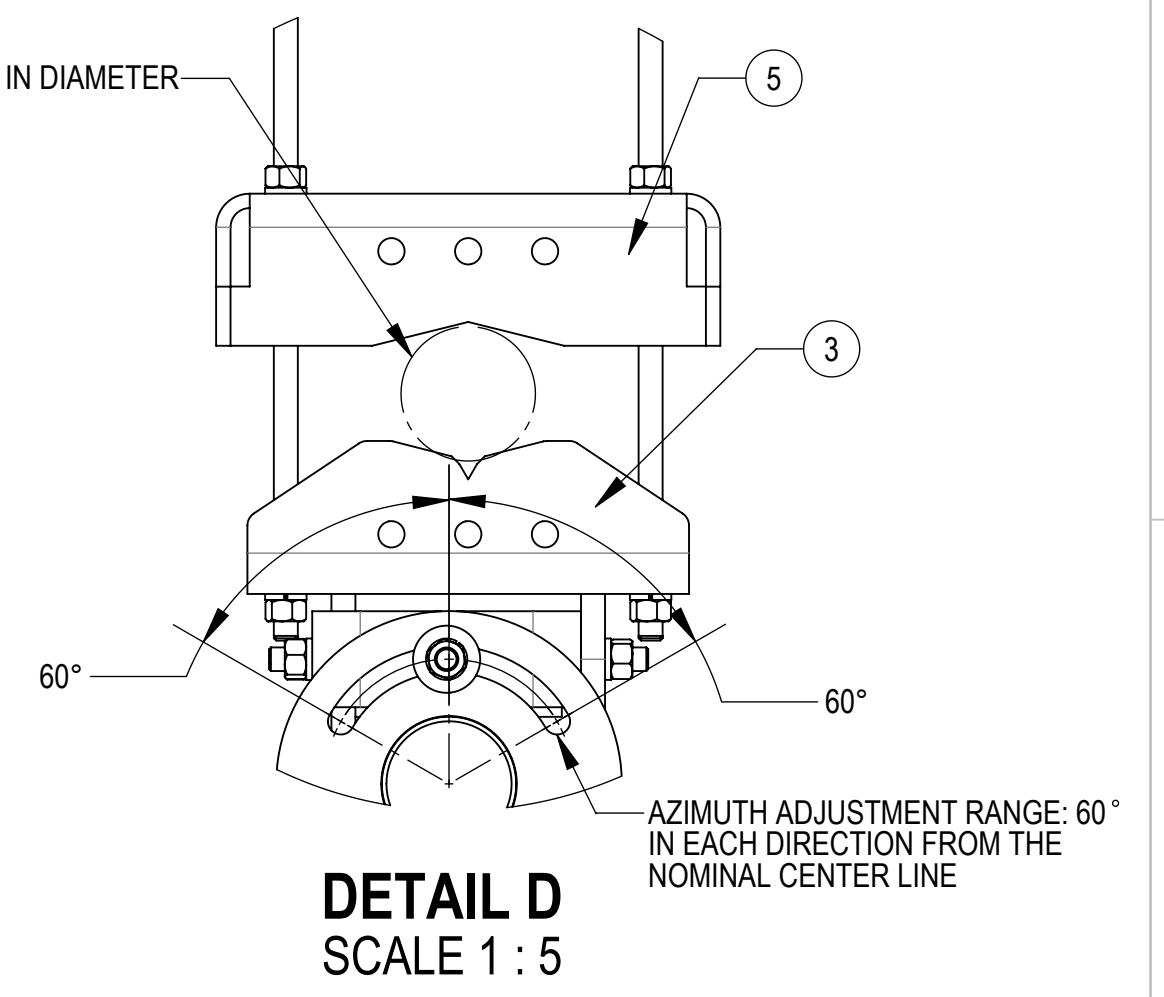
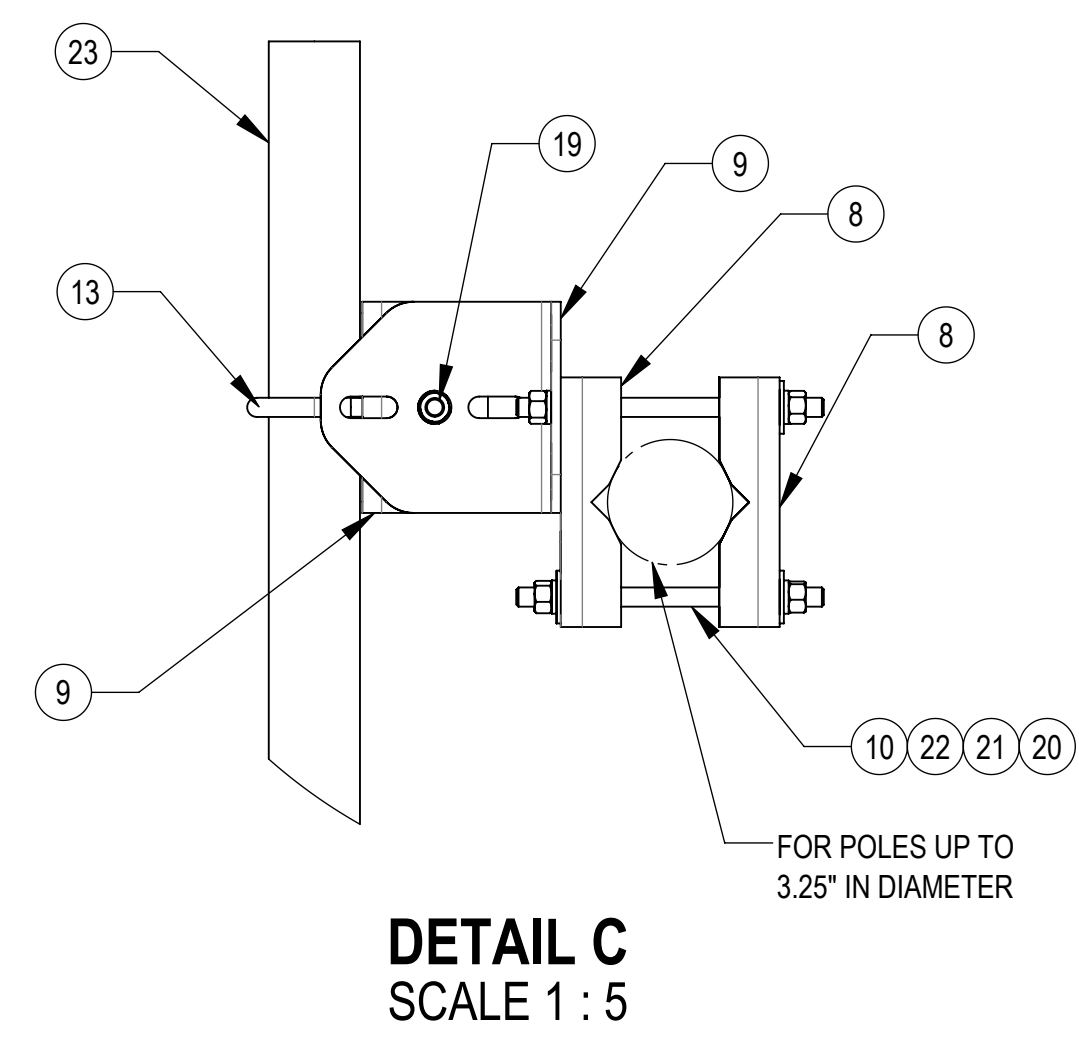
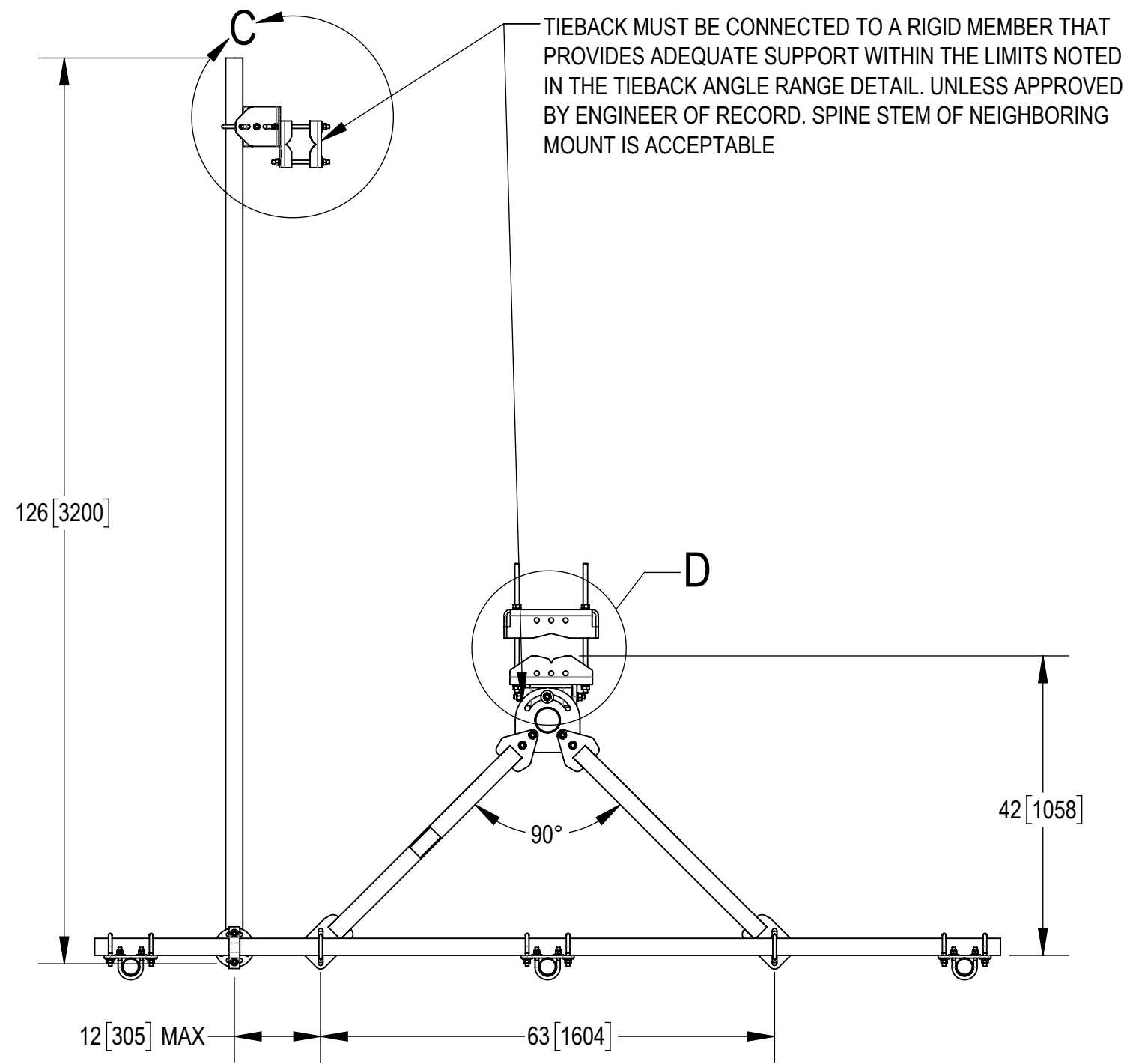


TITLE  
**SECTOR FRAME 10' FACE, (3) 96" ANT**

SIZE **C** SCALE **1:32** DOCUMENT NO. **SFG22-10-3-96**

DRAWING			SHEET 2 OF 5
VERSION	STATUS	REVISION	
03	RE	N	

Confidential

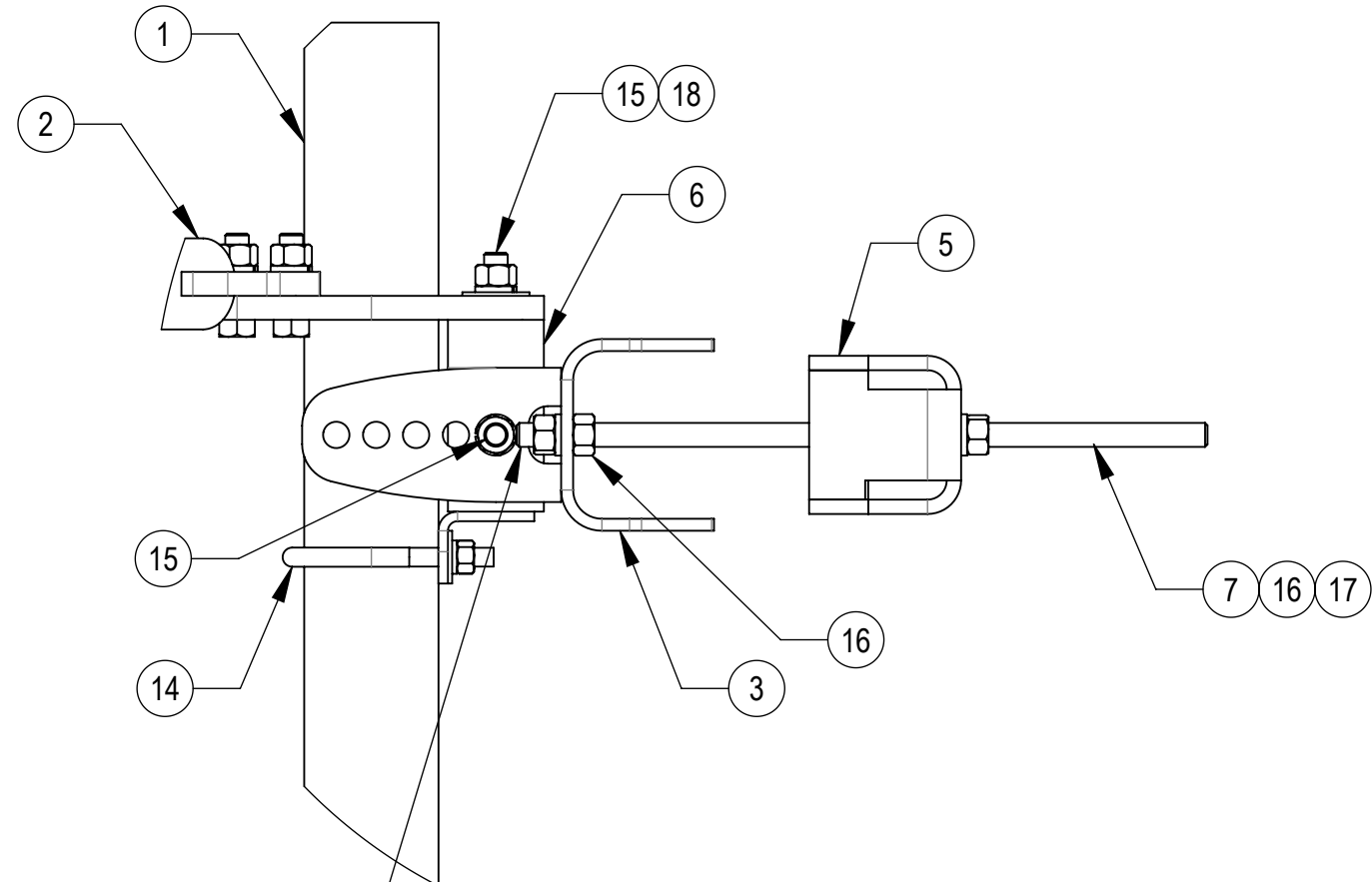


**ANDREW** an Amphenol company

TITLE  
SECTOR FRAME 10' FACE, (3) 96" ANT

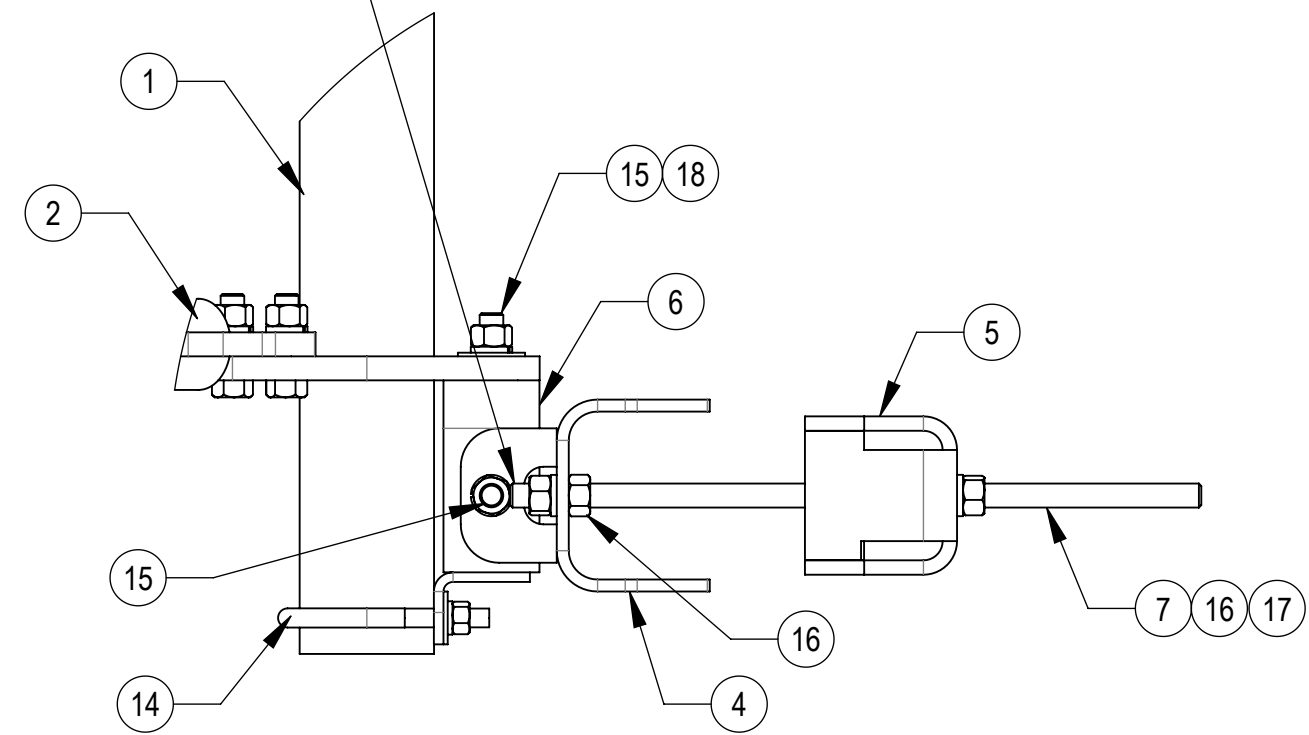
SIZE <b>C</b>	SCALE <b>1:32</b>	DOCUMENT NO. SFG22-10-3-96		
		DRAWING		SHEET 3 OF 5
		VERSION 03	STATUS RE	

Confidential

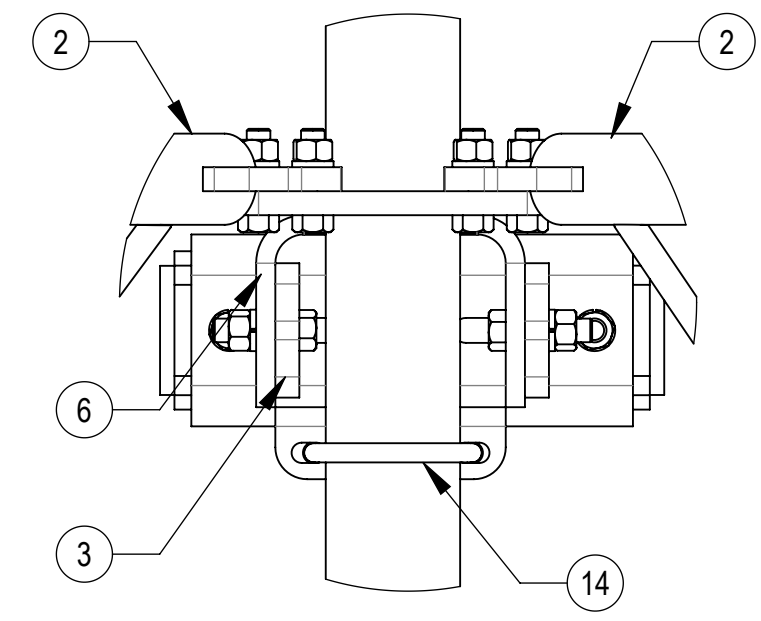


**DETAIL E**  
SCALE 1 : 5

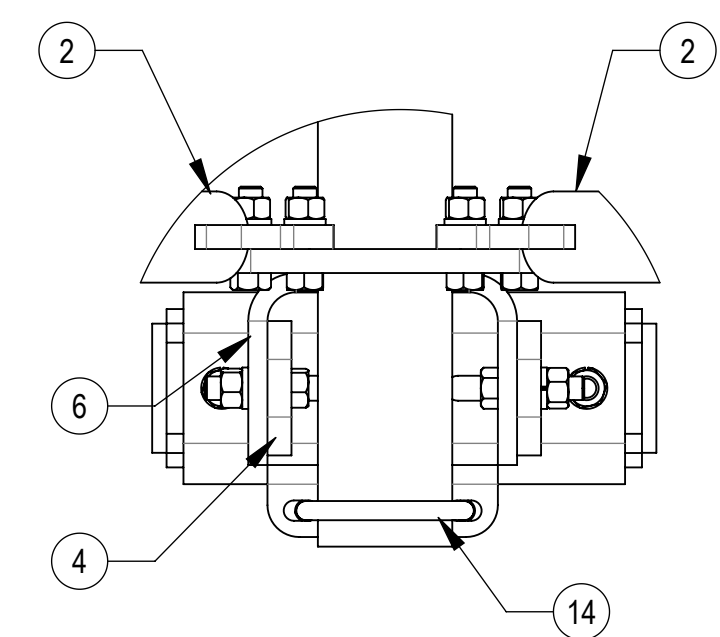
THE THREADED ROD CAN ONLY EXPOSE 4 TO 7 THREADS ON ONE SIDE OF THE BRACKET, WHICH IS TO PREVENT INTERFERENCE WITH THE SIDE BOLTS



**DETAIL F**  
SCALE 1 : 5



**DETAIL G**  
SCALE 1 : 5



**DETAIL H**  
SCALE 1 : 5



TITLE				
SECTOR FRAME 10' FACE, (3) 96" ANT				
SIZE	SCALE	DOCUMENT NO.		
<b>C</b>	<b>1:32</b>	SFG22-10-3-96		
	DRAWING			SHEET
	VERSION	STATUS	REVISION	
	03	RE	N	

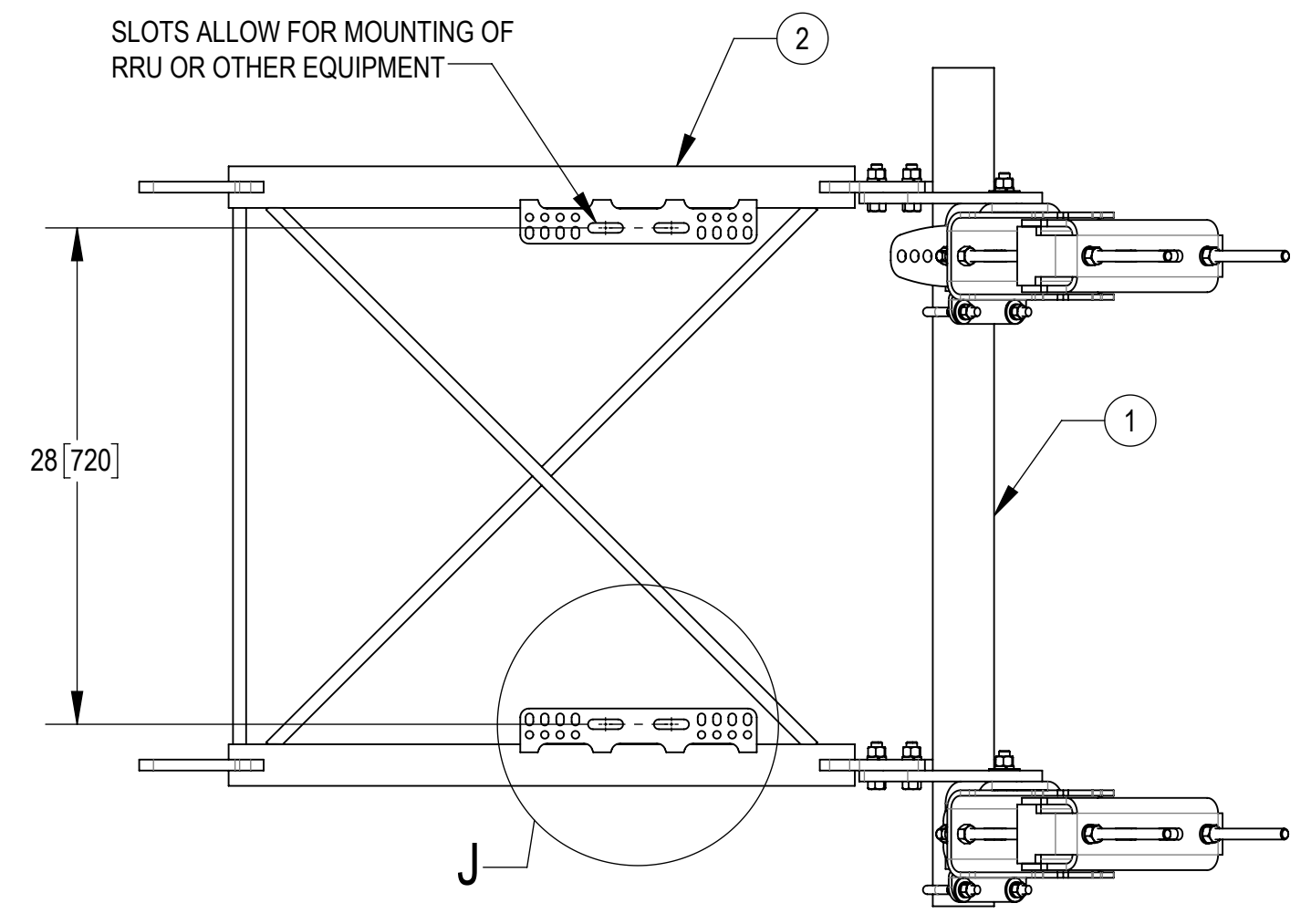
Confidential

4

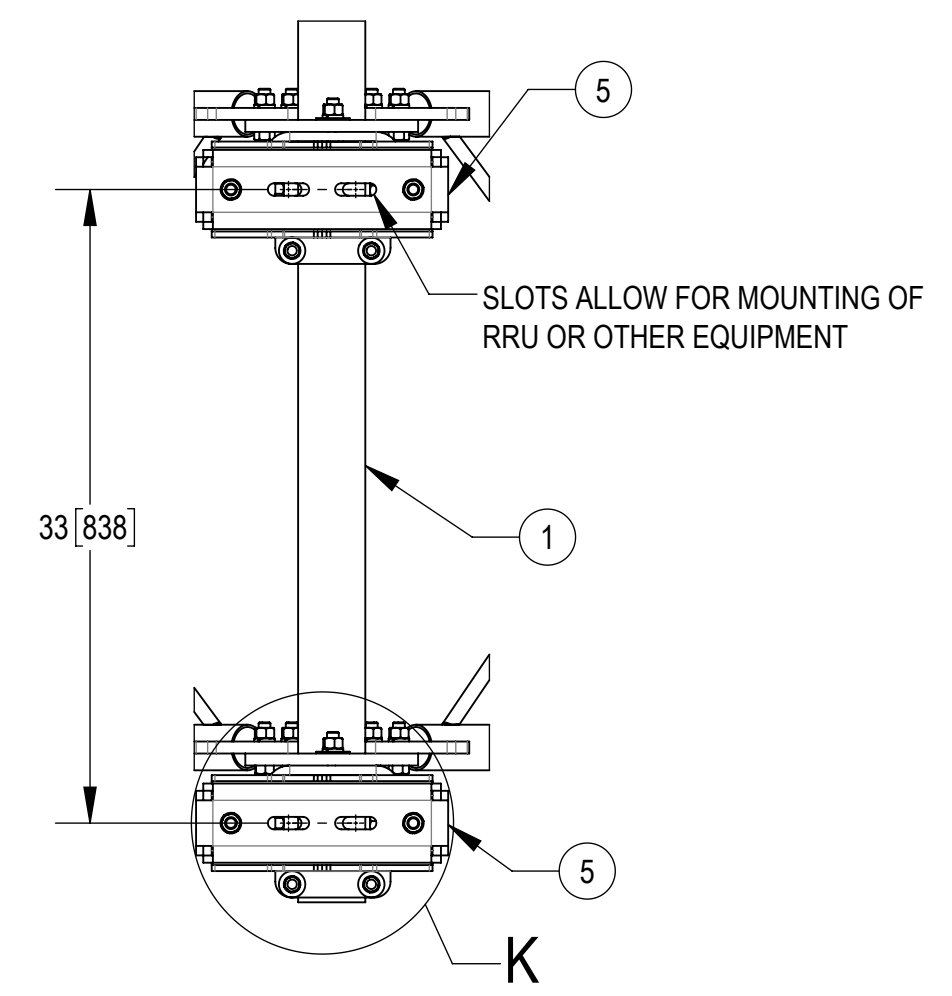
3

2

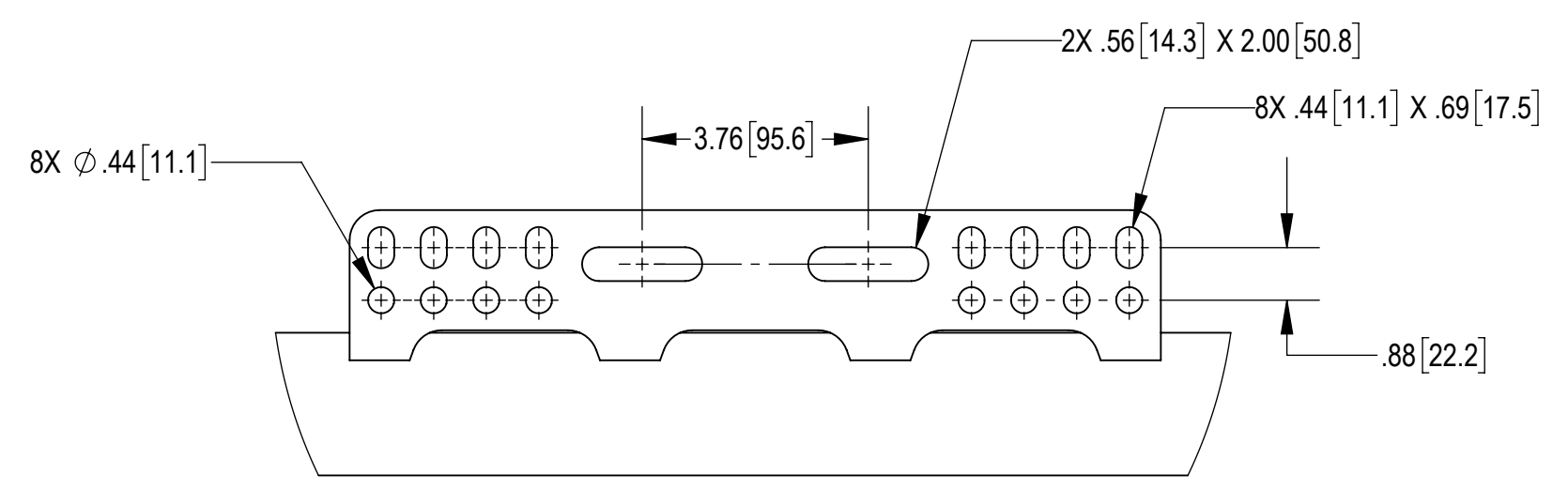
1



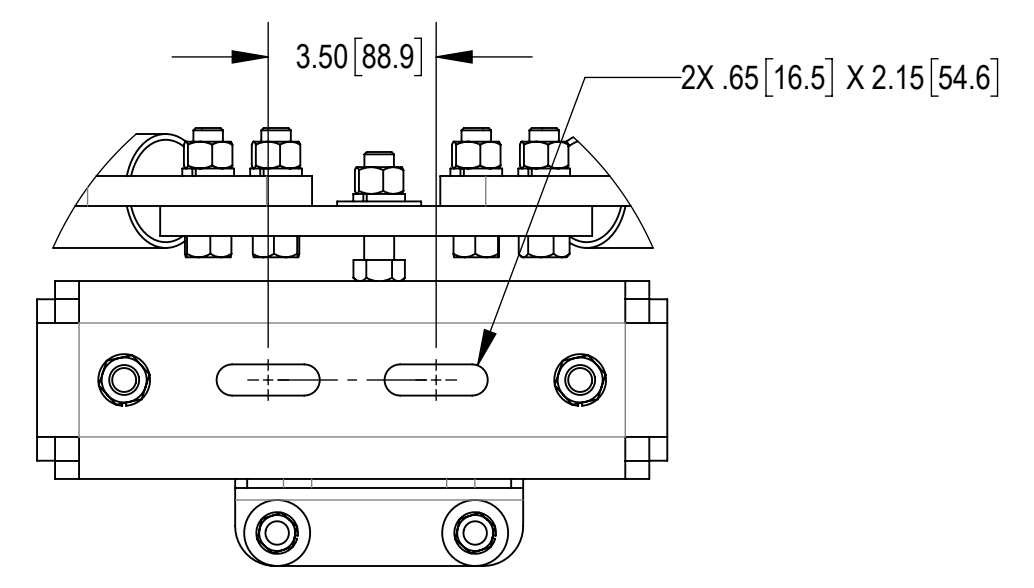
**SIDE VIEW**





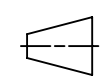
**BACK CROP VIEW**



**DETAIL J**  
SCALE 1 : 3



**DETAIL K**  
SCALE 1 : 4

 <b>ANDREW</b> an Amphenol company				
TITLE SECTOR FRAME 10' FACE, (3) 96" ANT				
SIZE <b>C</b>	SCALE <b>1:10</b>	DOCUMENT NO. SFG22-10-3-96		
 		DRAWING		SHEET 5 OF 5
		VERSION 03	STATUS RE	

Confidential

4

3

2

1

D

D

C

C

B

B

A

A