

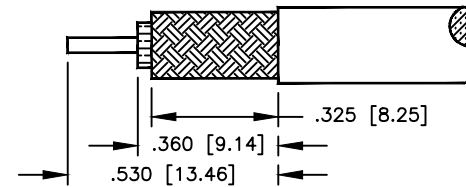
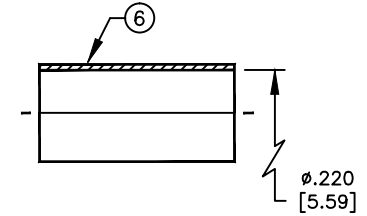
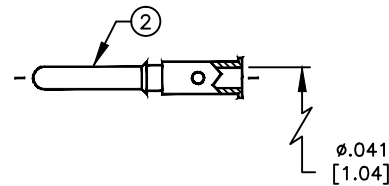
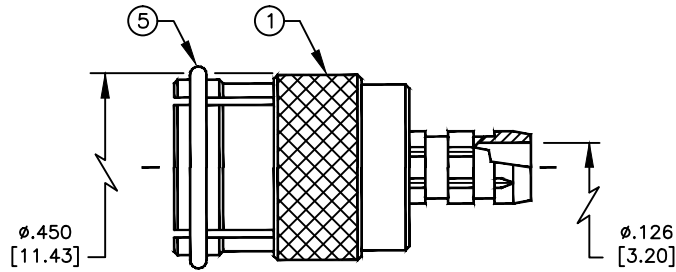
# SPECIFICATION CONTROL DRAWING

THIS DRAWING CONTAINS INFORMATION PROPRIETARY TO RF INDUSTRIES, LTD. ANY UNAUTHORIZED USE OF THIS DRAWING IS EXPRESSLY PROHIBITED. ANY VIOLATION IS PUNISHABLE UNDER U.S. COPYRIGHT LAWS.

REV	DESCRIPTION	DWN	DATE	APPROVED
C	ENGINEERING RELEASE	PB	7/15/92	C. JONES
D	CHG BODY, DIE, PIN / REMOVE OPT FERRULE STUD	KMM	9/10/92	J. BENZ
F	ADD DIELECTRIC DIMENSIONS / STANDARDIZE	KMM	7/11/94	R. RICE
G	CHG BODY ID AT SLOTS / CHANGE STRIPPING	KMM	2/1/99	R. RICE

ALL DIMENSIONS ARE REFERENCE ONLY

000000



SUGGESTED STRIPPING INSTRUCTIONS  
SUGGESTED CRIMP DIE: .068 & .213

## SPECIFICATIONS:

IMPEDANCE: 50 OHMS  
WORKING VOLTAGE: 335 VRMS @ SEA LEVEL  
FREQUENCY RANGE: 0-2.5 GHz  
INSERTION LOSS:  $\leq$  -.2 dB @ 2 GHz  
VSWR MAX: 1.25:1 @ 2 GHz  
FOR RG-58, 58A, 58C, 141, 141A, 400/U, BELDEN 8240, 8262, 9201, 9203, 9310, 9311, COMM/SCOPE 0268 & CUSHCRAFT ULTRALINK TL92463E

DIMENSIONS ARE IN INCHES AND [MILLIMETERS]

UNLESS OTHERWISE NOTED TOLERANCES ARE:

DECIMALS DIAMETER

**RF connectors**  
DIVISION OF RF INDUSTRIES, LTD.

7610 MIRAMAR RD  
SAN DIEGO, CA 92126  
(619)549-6340  
(619)549-6345 FAX

# RFU-600-5

MINI UHF MALE QUICK DISCONNECT CRIMP

ITEM	DESCRIPTION	QTY	MATERIAL	FINISH
6	FERRULE [FER-103]	1	BRASS	NICKEL
5	RETAINING RING	1	SK-5	NICKEL
4	PRESS FIT WASHER	1	BRASS	NICKEL
3	DIELECTRIC	1	DELTRIN	NONE
2	PIN [PIN-311-6]	1	BRASS	GOLD
1	BODY	1	BRASS	NICKEL

DRAWN	K. MAXWELL	2/1/99
CHECKED		
ORJ DRAWN	C. JONES	7/26/91
APPROVALS		DATE

SIZE	CABLE GROUP	DWG NO.	REV
A	C	7640	G
SCALE:	2:1	CAD FILE	13ARC B
			SHEET 1 OF 1