

RDS 4U Patch and Splice Panels Installation Instructions

Before you begin

Tools required (not provided):

- #1 and #2 Phillips screwdrivers
- Cable jacket stripper
- Flush cutters



Caution!

Fiber optic scraps are the same as glass splinters. Keep your work area clean and keep all food and drink out of the area.

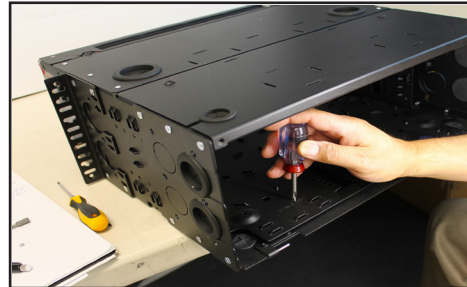
Always wear approved safety eyewear and other equipment (ex. gloves, hard hat, vest) when working with fiber optic cable.

Questions:

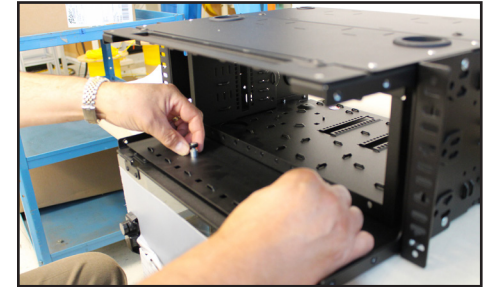
Call (408) 945-6626



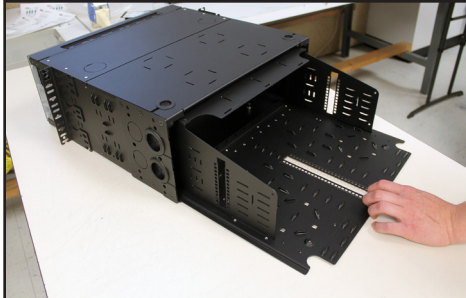
Step 1 Remove the rear door by flexing it and sliding it off of the hinge pins. Note: the panel can be installed into the rack and the inner tray removed.



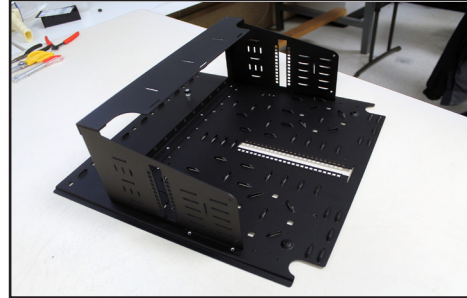
Step 2 Remove the tray locking screw.



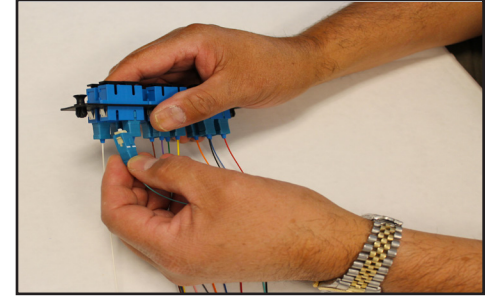
Step 3 Raise and slide the latches up, turning them to lock them in the up position.



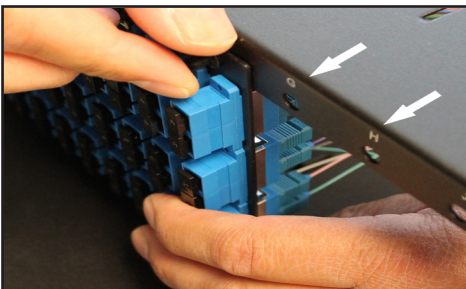
Step 4 Pull the inner shelf out the back. Be careful not to push/pull it too far out as it can fall free.



Step 5 Gently remove the inner shelf and place on a work table.



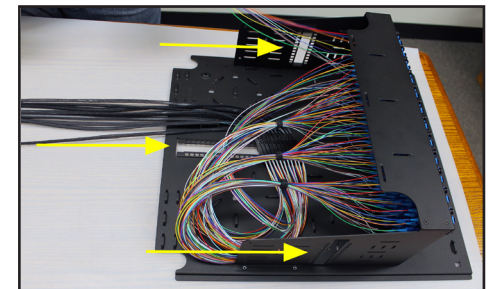
Step 6 Load the numbered pigtails into the bulkhead containing the adapters using the fiber optic color code. Remember the rear of the bulkhead is opposite the front position.



Step 7 Take note that there are letters on the front of the bulkhead and on the rear sliding shelf floor to help keep the adapters from being loaded backwards.

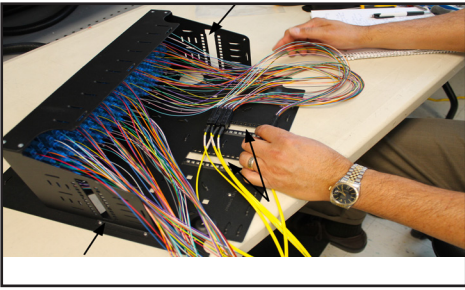


Step 8 Snap the loaded adapter plates into the sliding shelf bulkhead. Press the plunger of the latch in to secure it in place.

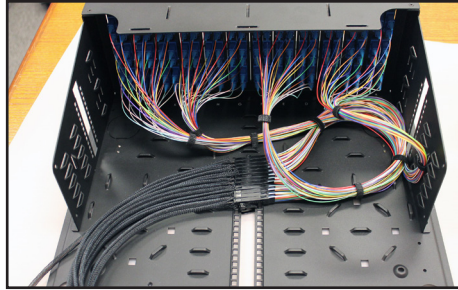


Step 9 There are three sets of fanout holder slots; one on the shelf floor and two on the sides.

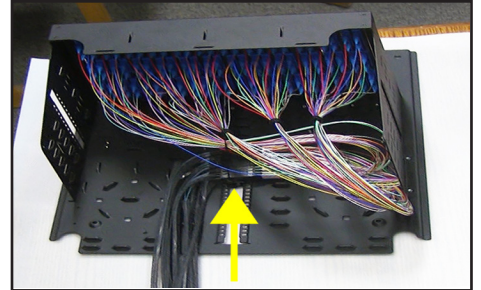




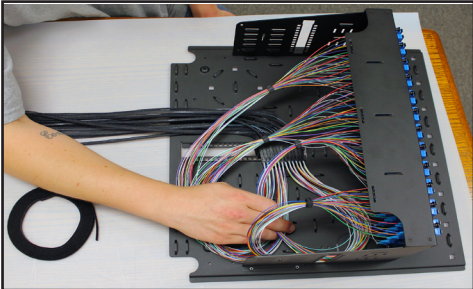
Step 10 Determine what side you plan to bring the trunk cable into the panel. Insert the fanout kits into the holder slots in numerical order.



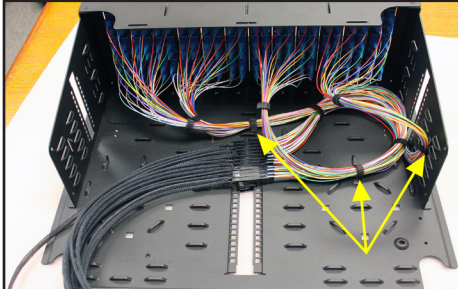
Step 11 Choose a holder slot that does not interfere with the cable routing (Note: slots are on the bottom and sides).



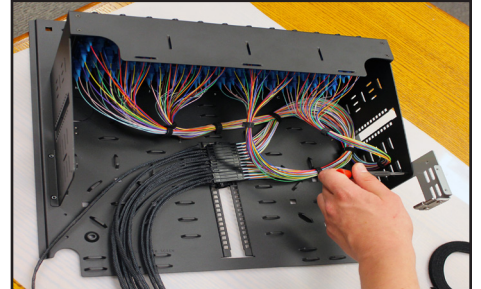
Step 12 Secure all of the fanout kits with a tie wrap looped through the holes immediately after the fanout kit. Trim the tag end of the tie wrap flush with a side cutter.



Step 13 Carefully bunch the 900µ pigtails in a logical fashion.



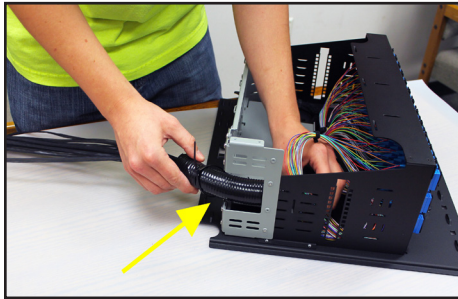
Step 14 Tie down the pigtail loops to the bridge lances with hook and loop fasteners. Be careful to maintain a fluid bend radius. Cable rings can also be used.



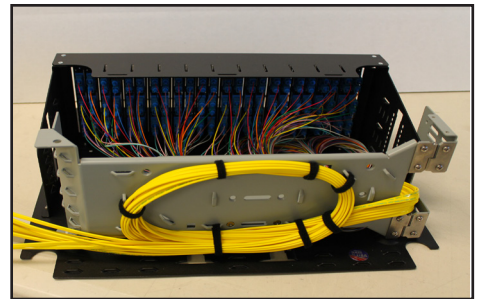
Step 15 Determine the cable entry side, positioning the pigtail so a slack loop can be attached to the back of the swing-out holder. The pigtail should flow through the hinge, maintaining a fluid bend radius. Secure the splice tray holder to that side using the screws included in the tray kit.



Step 16 Carefully dress the pigtails down and run them through the hinged opening of the splice tray holder. Thread the tie down strap to secure the splice trays on the swing-out holder while it is easily accessed.



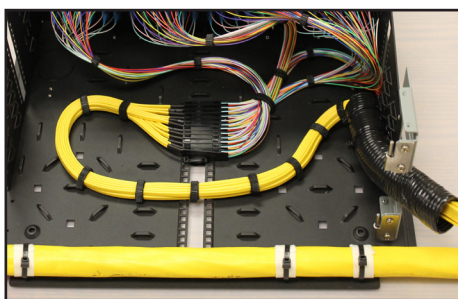
Step 17 Add 6" to 8" of split corrugated tubing to protect the ribbon from damage when opening the swing tray.



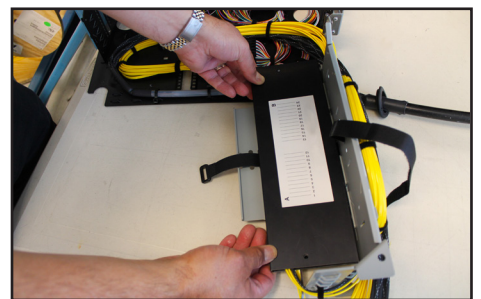
Step 18 Wrap a slack loop onto the back of the swing-out splice tray holder using the bridge lance tie downs and hook and loop fasteners.



Step 19 Strip back the incoming trunk cable at least 84". Straighten the fiber tubes and apply protective netting or tubing if necessary. Slide the side grommet onto the incoming cable.



Step 20 Attach the cable tube to the bottom of the slide tray using foam squares and nylon tie wraps. Be sure to put a service loop inside the panel and/or on the back of the swing tray.

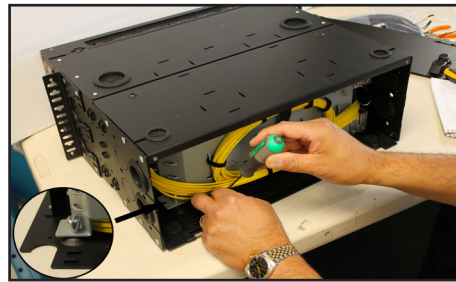


Step 21 Splice fibers into the tray following the instructions of your splice tray manufacturer. Load the splice trays on to the swing-out shelf.

RDS 4U Patch and Splice Panels Installation Instructions (continued)



Step 22 After each tray is spliced, stack them in order onto the swing-out shelf and secure them down with a cinch strap.



Step 23 Swing the tray into the panel and make sure the plunger snaps into place. Replace the slide lock screw (removed in Step 2).

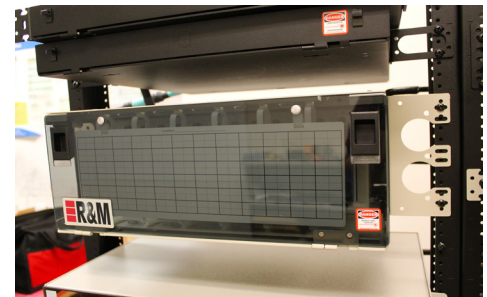


Step 24 Place the grommet into the side slot and secure the plate.



Step 25 Mount the cable clamp. Install the panel into the rack, if not previously done.

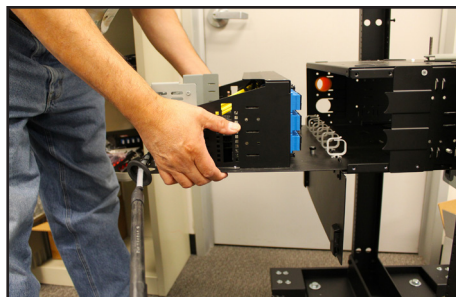
The RDS 4U Patch and Splice Panel is the most **versatile** fiber management system available. Explore its useful features:



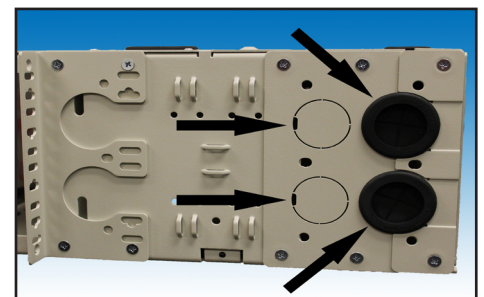
Step 26 Ears shown positioned for a 23" rack.



Step 27 Panel shown mounted on a Tele-com backboard. The panel can be mounted in 28 different positions plus it can be wall mounted using it's ears.



Step 28 You can install the panel in the rack first and then pull out the tray to work on it.



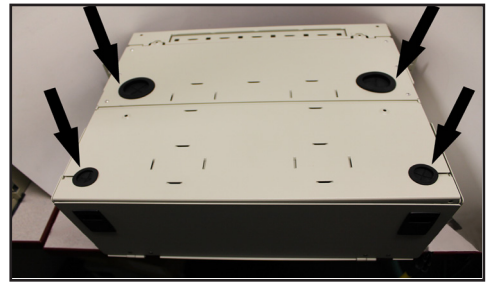
Step 29 Captive/non-captive side plate allows 1 1/4" or 1" conduit to be run into the panel. Four entry ports per plate (two knockouts). **Over**



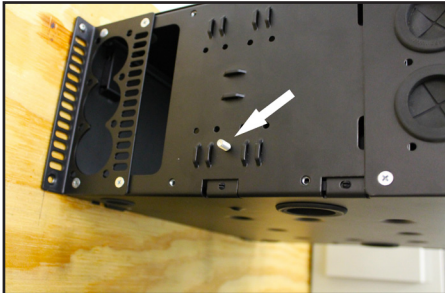
Step 30 If rodent protection is required, the rear side plates can be installed in the front (or an extra set of side plates can be ordered).



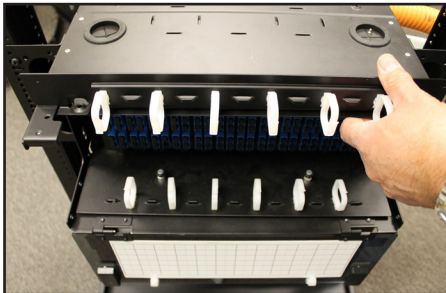
Step 31 REALM'S unique ear design allows conduit to be run directly through the ears.



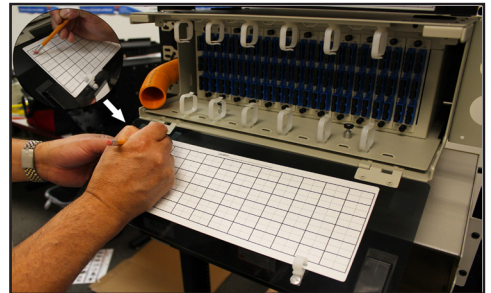
Step 32 Cable entry ports: top and bottom, with a non-captive cable entry port on the rear.



Step 33 The panel has a built-in grounding lug.



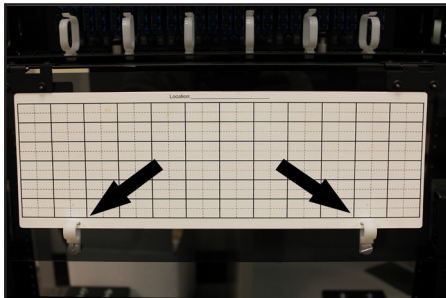
Step 34 Flip up wire manager



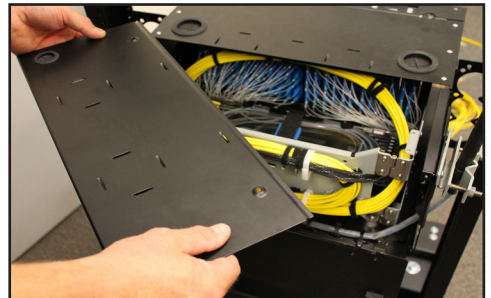
Step 35 Write and erase cable assignment charts can be written on with a lead pencil, making it easy to update your cable routing.



Step 36 Additional charts can be printed from Excel. The template can be downloaded from: <http://www.rcgoptic.com/productsdisplay1.asp?id=781>



Step 37 The chart is attached with heavy-duty hardware that won't break-off.



Step 38 The rear top lid can be removed for convenient access to a dressed panel.



CALL (888) 724-6784

RDM.COM

R&M USA, Inc. • 840 Yosemite Way • Milpitas • CA • 95035

R&M USA, Inc. products are the result of over 50 years creating innovative designs and versatile solutions for the communications market.