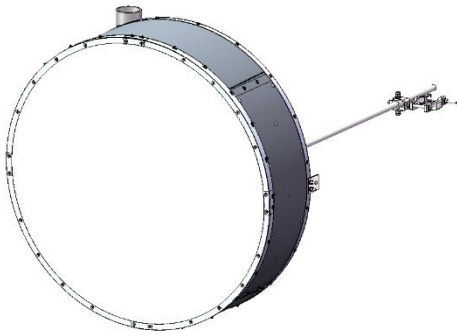


MW-V12S10W-CPR90G

1.2m 10GHz High Performance Microwave Antenna



- High Performance Antenna
- 10.00-11.70 GHz
- Single-Polarized



Electrical Data

Operating Frequency		10.00-11.70 GHz
Gain	Low	40.2 dBi
	Mid	40.7 dBi
	High	41.0 dBi
3dB BW (Azimuth & Elevation)		1.6 deg
Regulatory Compliance		ETSI 302 217 R1 Class3 US FCC Part 101A @ 10.55-10.7GHz US FCC Part 101A @ 10.7-11.7GHz
RPE Number		RPE12-10W
VSWR (Return Loss)		1.30 (-17.7 dB)
F/B Ratio		66 dB
XPD		30 dB
Polarization		Single-Polarized
Interface Waveguide Type		CPR90G

Environmental Data

Operating Temperature		-55°C to +70°C
Storage Temperature		-55°C to +70°C
Wind resistance	Operational	180 km/h 112 mph
	Survival	252 km/h 157 mph

Mechanical Data

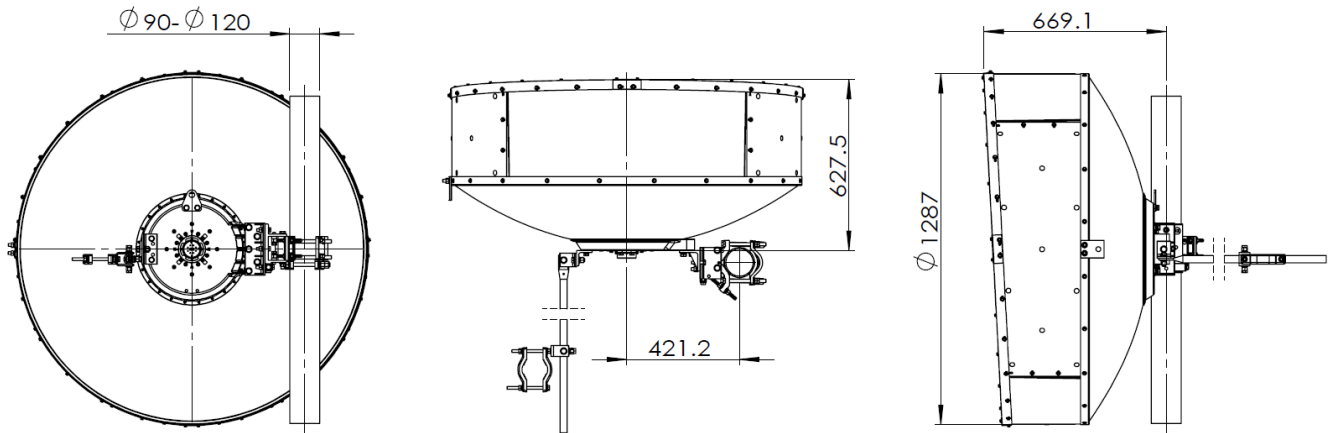
Reflector Construction		One-piece reflector
Adjustment	Azimuth	±15°
	Elevation	±15°
Packed Dimension	L / W / H	1400mm / 440mm / 1540mm 55.12in / 17.32in / 60.63in
Packing		1 set in wood box
Net Weight		37.85 kg 83.44 lb
Gross Weight		60.85 kg 134.15 lb

MW-V12S10W-CPR90G

1.2m 10GHz High Performance Microwave Antenna

PROSE

Antenna Dimension (in mm) and Mounting Kit



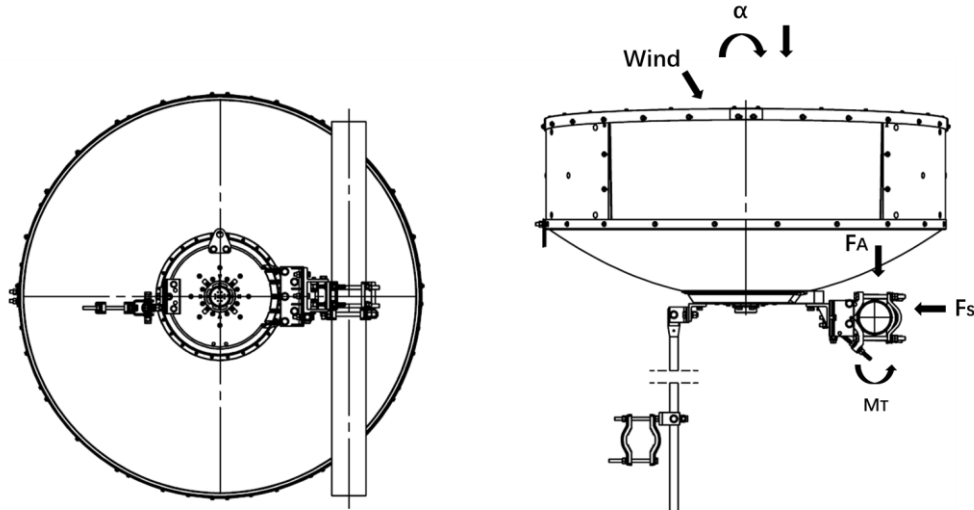
Pole diameter

90-120 mm | 4-5 in

Side struts, included

1

Wind Forces at Wind Velocity Survival Rating



Axial Force (FA)

4956 N | 1114 lb-f

Side Force (FS)

2446 N | 550 lb-f

Twisting Moment (MT)

2200 N.M | 1623 lb-ft

Angle α for MT Max

-10°

While the information has been carefully compiled to the best of our knowledge, nothing is intended as representation or warranty on our part and no statement herein shall be construed as recommendation to infringe existing patents. In the effort to improve our products, we reserve the right to make changes judged to be necessary.