

Cat.6A classic Patch Cords



R&Mclassic Cat.6A patch cords are used for connecting the network equipment to patch panels and telecommunications outlets. They are suitable for frequencies of up to 500 MHz.

Features of Cat.6A Patch Cord



- Fulfills the requirements of Category 6A, Class E_A (500MHz) according to the present standard of TIA-568.2 and ISO/IEC 11801
- Complies with the Category 6_A specifications of the IEC 60603-7-41 / IEC 60603-7-51 connector standard
- Supports PoE (IEEE 802.3af), PoEP (IEEE 802.3at), 4PPoE (IEEE 802.3bt) and is compatible to IEC 60512-99-001/002 (*)
- Tested according to IEC 61935-2
- Lengths from 0.2 to 20m available
- Impedance of 100Ω
- LSZH versions

Cat.6A classic Patch Cords Data Sheet

Materials

Plug Housing	Contacts	Contact Plating	Shielding
UL 94-V0 polycarbonate	Bronze (CuSn6)	1,27 µm gold plate	Brass with nickel plated

Electrical Characteristics

General	Current Rating	Dielectric Withstanding Voltage	Insulation Resistance @20°C 100VDC
Compliant to 60603-7	1.5A @ 25°C	1000 VDC	≥500 MΩ

Mechanical Characteristics

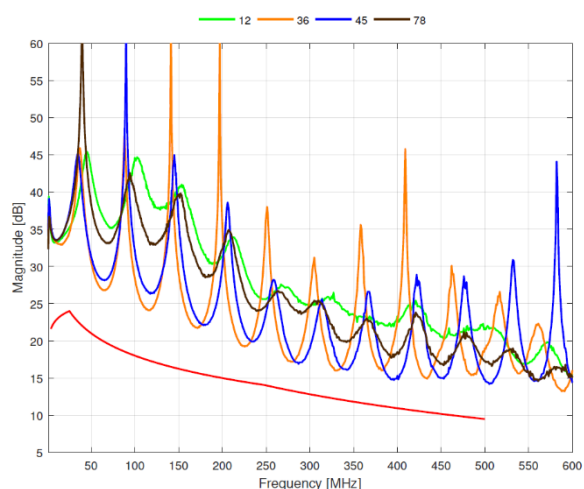
Environmental Characteristics

Plug Tolerances and Dimensions	Operating Temperature
Compliant to IEC 60603-7	-10°C to +60°C

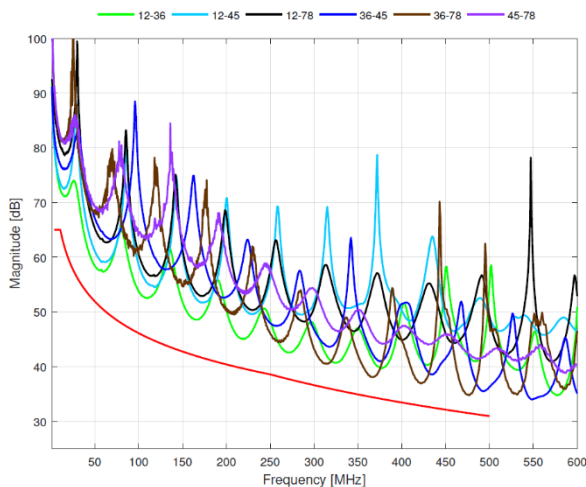
Patch Cord Characteristics Cat.6A classic

	unshielded	shielded
Inner conductor diameter	AWG26/7	AWG26/7
Cable construction	U/FTP	U/FTP
Number of pairs	4	4
Screen per pair	ANEXT suppression foil	AL/ foil
Outer screen	None	None
Jacket	LSZH	LSZH
Bending radius	≥50mm operation (without load)	≥50mm operation (without load)
Outer diameter	nominal 5.7 mm	nominal 5.7 mm
Wiring method	standard: TIA568A, optional: TIA568B	
Jacket colours	grey, yellow, red, blue, green, orange, black, violet, white	

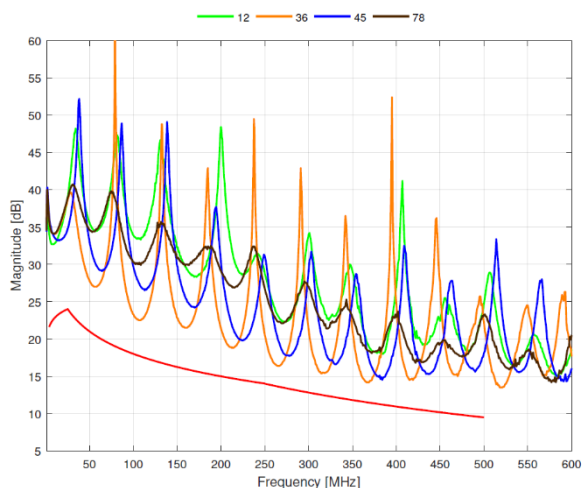
Typical Return Loss Cat.6A unshielded patch cord 2m



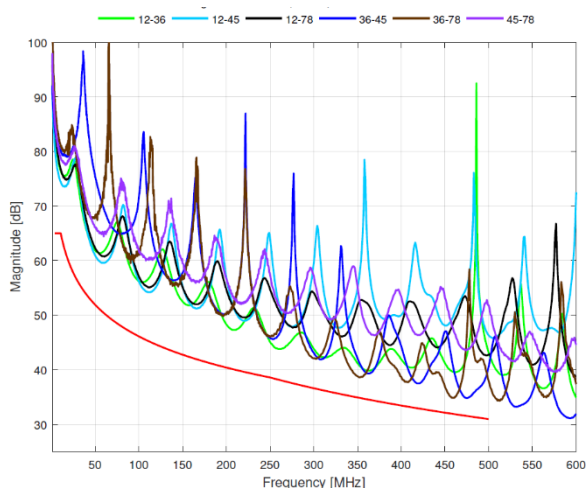
Typical NEXT Cat. 6A unshielded patch cord 2m



Typical Return Loss Cat. 6A shielded patch cord 2m



Typical NEXT Cat. 6A shielded patch cord 2m



(*) For continuous PoE applications or 4PPoE, R&M recommends to use *PowerSafe* patch cords.