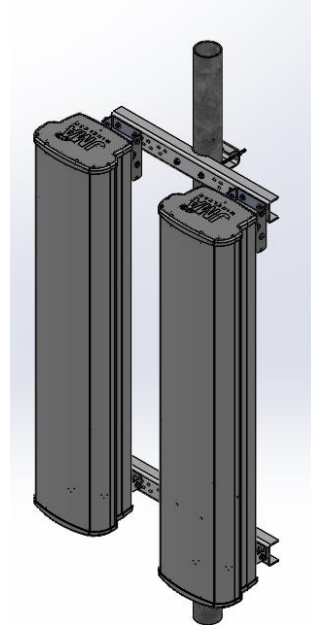
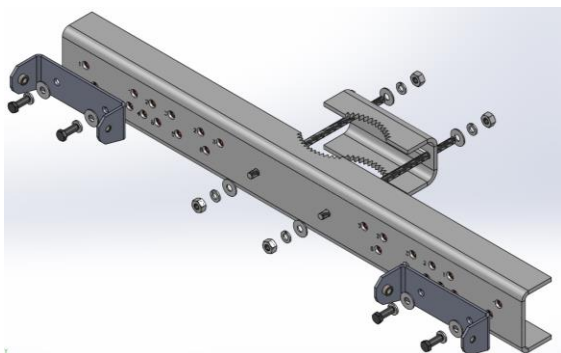


Dual-mount antenna bracket

- Enables optimal spacing for low-band 4T4R beamforming
- Mechanical tilt in line with specified antenna
- Spacing range 2"–12" (edge-to-edge) depending on antenna model
- Compatible with MX, X7C*, and C7C* antenna ranges
- Ease of field installation – utilizing existing antenna mount brackets

Dual-mount bracket assembly



Brackets needed per antenna type

4'–6' antennas	2 brackets needed
>6'–8' antennas	3 brackets needed

Mechanical specifications

Net weight per bracket, lb (kg)	22.3 lb (10 kg) – does not include brackets included with antenna
Range of allowable mechanical up/down tilt	-2° to 14°
Rated wind survival speed, mph (km/h)	150 mph (241 km/h)
Material specification	.16" to .25" thick hot-dipped, galvanized steel

Ordering information

Mounting bracket model	Description
91900314	Dual-mount antenna bracket assembly (single)
*Compatible antennas	
4'–8' quad-, hex-, and octo-port macro antennas in the X7C; C7C; X7CAP; C7CAP; X7QAP; MX ranges (Check with customer service for exact fit)	
Installation instructions	
81900505	Installation instructions for dual-mount bracket assembly (single)