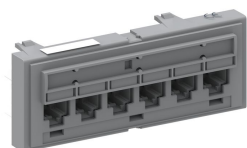


760151183 | 360-IPR-1100-GS6-DM6

SYSTIMAX 360™ GigaSPEED X10D® 1100GS6 Evolve Category 6A U/UTP Distribution Module, 6 port



Product Classification

Regional Availability

Asia | Australia/New Zealand | EMEA | Latin America | North America

Portfolio

SYSTIMAX®

Product Type

Module

Product Brand

GigaSPEED X10D® | SYSTIMAX 360™

General Specifications

ANSI/TIA Category

6A

Cable Type

Unshielded

Color

Cool gray

Conductor Type

Solid | Stranded

Intelligence Type

iPatch® ready

Modules, quantity

1

Rack Type

EIA 19 in

Rack Units

1

Termination Type

IDC

Total Ports, quantity

6

Wiring

T568A | T568B

Dimensions

Height

43.688 mm | 1.72 in

Width

482.6 mm | 19 in

Depth

28.702 mm | 1.13 in

Compatible Diameter Over Dielectric, maximum

1.168 mm | 0.046 in

Compatible Diameter Over Dielectric, minimum

0.762 mm | 0.03 in

760151183 | 360-IPR-1100-GS6-DM6

Compatible Conductor Gauge, solid 22 AWG | 24 AWG

Compatible Conductor Gauge, stranded 22 AWG | 24 AWG

Electrical Specifications

Current Rating at Temperature 1.5 A @ 20 °C | 1.5 A @ 68 °F

Dielectric Withstand Voltage, RMS, conductive surface 1,500 Vac @ 60 Hz

Dielectric Withstand Voltage, RMS, contact-to-contact 1,000 Vac @ 60 Hz

Insulation Resistance, minimum 500 MOhm

Material Specifications

Contact Plating Material Precious metals

Material Type High-impact, flame retardant, thermoplastic | Powder-coated steel

Termination Contact Plating Nickel

Mechanical Specifications

Plug Insertion Life, minimum 750 times

Plug Insertion Life, test plug IEC 60603-7 compliant plug

Plug Retention Force, minimum 133.447 N | 30 lbf

Environmental Specifications

Operating Temperature -10 °C to +60 °C (+14 °F to +140 °F)

Storage Temperature -40 °C to +70 °C (-40 °F to +158 °F)

Relative Humidity Up to 95%, non-condensing

Flammability Rating UL 94 V-0

Safety Standard UL | cUL

Packaging and Weights

Packaging quantity 1

Weight, net 0.073 kg | 0.16 lb

Regulatory Compliance/Certifications

Agency	Classification
CHINA-ROHS	Below maximum concentration value
ISO 9001:2015	Designed, manufactured and/or distributed under this quality management system

REACH-SVHC

Compliant as per SVHC revision on www.commscope.com/ProductCompliance

ROHS

Compliant

