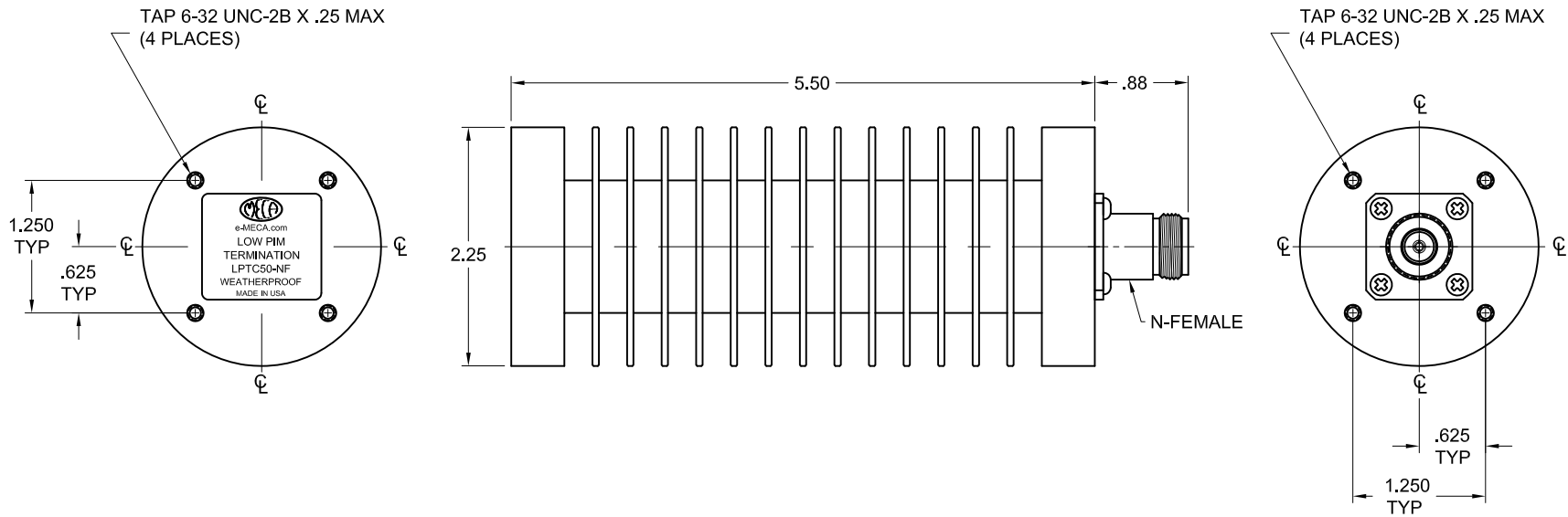



ELECTRICAL SPECIFICATIONS

FREQUENCY RANGE (GHz): 0.380 - 2.700
 IMPEDANCE (NOMINAL): 50 Ohms
 VSWR:
 0.380 - 0.698 GHz: 1.15:1 TYP/1.25:1 MAX
 0.698 - 2.700 GHz: 1.10:1 TYP/1.20:1 MAX
 POWER: (MAX): 50 WATTS
 (PEAK): 5.0 KWATTS
 PASSIVE INTERMODULATION DISTORTION: -160 dBc TYPICAL, LESS THAN -155 dBc, WITH 2 x 20 WATT TONES IN CELL AND PCS BANDS

MECHANICAL SPECIFICATIONS

CONNECTOR BODY: BRASS, ALBALOY PLATE
 CONNECTOR PINS: BERYLLIUM COPPER, GOLD PLATE
 CONNECTOR INTERFACE TORQUE: 12 ± 1 in.lbs.
 HOUSING: ALUMINUM, BLACK ANODIZE
 O-RING: SILICONE RUBBER
 INGRESS PROTECTION: IP 67
 INSULATORS: PTFE, VIRGIN ELECTRICAL GRADE
 TEMPERATURE: -55°C TO +85°C
 WEIGHT (NOMINAL): 1.20 lb



					MATERIAL: SEE ABOVE		UNLESS OTHERWISE SPECIFIED, DIMENSIONS ARE IN INCHES		 ELECTRONICS, INC. DENVER, NEW JERSEY e-MECA.com						
					FINISH: SEE ABOVE		TOLERANCES 2 PLACES: ±.02 3 PLACES: ±.010 ANGLES: N/A								
B	SEE DCN #150909-5				09/16/15	NL	RR	DRAWN: NL		DATE: 07/11/14	TIR: N/A	TITLE LOW PIM TERMINATION, 50 WATTS, N-FEMALE, WEATHERPROOF			
A	NEW				07/11/14	NL	CC	APPROVED: CC		DATE: 07/11/14	SCALE: NTS			SIZE A	CAGE CODE NO. 22424
LTR	PG	DESCRIPTION			DATE	DR	APP				SHEET: 1 OF 1				