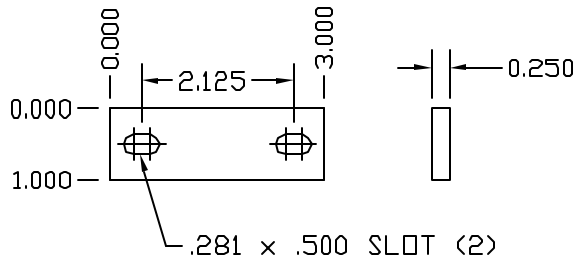
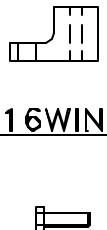


**COPPER RACK GROUND BAR**



**SPLICE PLATE**



**11/16WINS (2)**

**SMS0126SHWZ (2)**

**KIT INCLUDES:**  
 (2)-12-24 X 3/4" CU. MACHINE SCREW  
 (2)-#12 CU. FLAT WASHER  
 (8)-#6-32 X 1/4" CU. MACHINE SCREW  
 (8)-#6 RING TERMINAL


**HWKITPTS (1)**

**RGBHKIT**

**APPROVED**

AS DRAWN: \_\_\_\_\_  
 AS NOTED: \_\_\_\_\_  
 DATE: \_\_\_\_\_

THIS DOCUMENT AND THE CONTENTS THEREOF IS THE PROPERTY OF HARGER INC., AND IS FURNISHED TO YOU FOR INFORMATION ONLY. THE INFORMATION CONTAINED HEREIN IS CONFIDENTIAL AND OF A PROPRIETARY NATURE AND MUST NOT BE DISCLOSED TO THIRD PARTIES WITHOUT THE EXPRESS WRITTEN APPROVAL OF HARGER INC.

F	ADD SPLICE PLATE SANDING NOTES	042604	WSM
E	ADD SPLICE PLATE SANDING NOTES	042604	EHS
D	WAS ZPT1.05223 TUBING	031504	LAL
C	# CU WAS 1.55	121103	WSM
B	ADD TAPING DETAIL	052003	EHS
A	INSUL WAS A 11DA1 W/ MOUNT HRDWR ADD CARDBOARD TUBE PACK NOTES	041103	EHS
LET	REVISION	DATE	BY
TOLERANCES UNLESS NOTED:		3RD ANGLE PROJECTION	
FRACTIONAL +/- 1/16			
DECIMAL +/- .030			
BREAK SHARP EDGES			

EST WT 3#

**PART NO. RGBHKIT14119.25**  
 RACK GROUND BAR KIT

DRAWN BY: EHS  
 CHECKED BY: -  
 DATE: 111501



301 ZIEGLER DRIVE  
 GRAYSLAKE, IL 60030  
 (847) 548-8700

REVISION: F  
 SCALE: 3/8  
 SHEET: 1 OF 1