



F187CCS5

FlexTwist™ Flexible Twist for WR187, 3.95–5.85 GHz, with interface types CPR187G and CPR187G, 1200 mm

Electrical Specifications

Operating Frequency Band	3.95 – 5.85 GHz
Attenuation	0.05 dB/ft 0.17 dB/m
Average Power	3000 W
Peak Power	1250.0 kW
VSWR	1.10

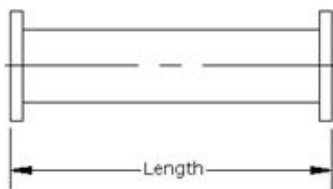
General Specifications

Component	Flexible Twist
Waveguide Size	WR187 WG12 R48
Interface	CPR187G
Interface 2	CPR187G
Length	1200 mm 47 in

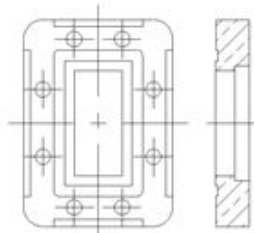
Mechanical Specifications

Maximum Twist	165.00 °/m 50.00 °/ft
Minimum Bend Radius, Multiple Bends (E Plane)	165.00 mm 6.50 in
Minimum Bend Radius, Multiple Bends (H Plane)	330.00 mm 13.00 in
Pressurization, maximum	30 psi 205 kPa

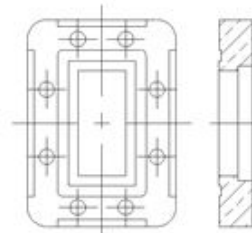
Component



Interface



Interface 2



Regulatory Compliance/Certifications

Agency	Classification
ISO 9001:2008	Designed, manufactured and/or distributed under this quality management system