

F090KMS3

FlexTwist™ Flexible Twist for WR90, 8.2–12.4 GHz, with interface types PBR100 and UBR100, 900 mm

Electrical Specifications

| | |
|--------------------------|------------------------|
| Operating Frequency Band | 8.2 – 12.4 GHz |
| Attenuation | 0.13 dB/ft 0.43 dB/m |
| Average Power | 960 W |
| Peak Power | 180.0 kW |
| VSWR | 1.10 |

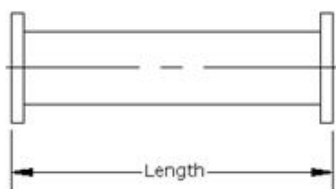
General Specifications

| | |
|----------------|--------------------|
| Component | Flexible Twist |
| Waveguide Size | WR90 WG16 R100 |
| Interface | PBR100 |
| Interface 2 | UBR100 |
| Length | 900 mm 35 in |

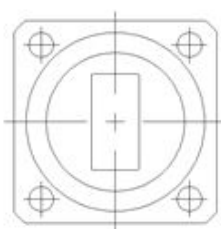
Mechanical Specifications

| | |
|---|-------------------------|
| Maximum Twist | 310.00 °/m 95.00 °/ft |
| Minimum Bend Radius, Multiple Bends (E Plane) | 64.00 mm 2.50 in |
| Minimum Bend Radius, Multiple Bends (H Plane) | 127.00 mm 5.00 in |
| Pressurization, maximum | 45 psi 310 kPa |

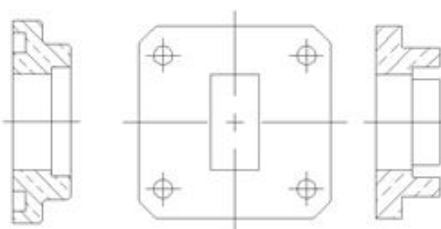
Component



Interface



Interface 2



Regulatory Compliance/Certifications

Agency

RoHS 2011/65/EU
China RoHS SJ/T 11364-2006
ISO 9001:2008

Classification

Compliant by Exemption
Above Maximum Concentration Value (MCV)
Designed, manufactured and/or distributed under this quality management system

Product Specifications

COMMSCOPE®

F090KMS3

