



## F090CKB3

**FlexTwist™ Flexible Twist for WR90, 10.7–11.7 GHz, with interface types CPR90G and PBR100, 900 mm**

### Electrical Specifications

Operating Frequency Band	10.7 – 11.7 GHz
Attenuation	0.13 dB/ft   0.43 dB/m
Average Power	960 W
Peak Power	180.0 kW
VSWR	1.03

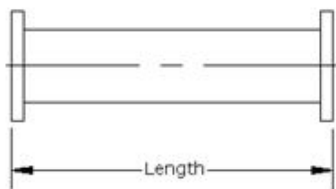
### General Specifications

Component	Flexible Twist
Waveguide Size	WR90   WG16   R100
Interface	CPR90G
Interface 2	PBR100
Length	900 mm   35 in

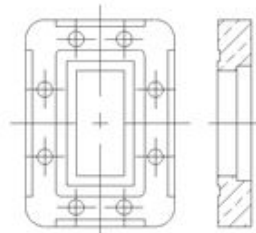
### Mechanical Specifications

Maximum Twist	310.00 °/m   95.00 °/ft
Minimum Bend Radius, Multiple Bends (E Plane)	64.00 mm   2.50 in
Minimum Bend Radius, Multiple Bends (H Plane)	127.00 mm   5.00 in
Pressurization, maximum	45 psi   310 kPa

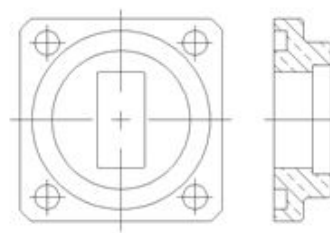
#### Component



#### Interface



#### Interface 2



### Regulatory Compliance/Certifications

#### Agency

RoHS 2011/65/EU  
China RoHS SJ/T 11364-2006  
ISO 9001:2008

#### Classification

Compliant by Exemption  
Above Maximum Concentration Value (MCV)  
Designed, manufactured and/or distributed under this quality management system

# Product Specifications

COMMSCOPE®

F090CKB3

POWERED BY

