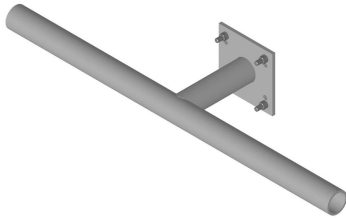


# MC-DPM-B

---



Monopole Co-location Dual Pipe Mount Base Kit, 4 ft 9 in face, pipe ordered separately

## Product Classification

**Product Type** Monopole dual pipe mount kit

## General Specifications

**Pipe, quantity** 0

**Sectors, quantity** 1

## Dimensions

**Height** 254 mm | 10 in

**Face Width** 1.463 m | 4.8 ft

**Width** 1,447.8 mm | 57 in

**Length** 355.6 mm | 14 in

**Stand-off Distance** 355.6 mm | 14 in

## Material Specifications

**Material Type** Hot dip galvanized steel

## Mechanical Specifications

**Wind Rating** 120 mph (BWS) at 150 ft AGL | 140 mph (3-second gust) at 150 ft AGL using Exposure D per FBC

**Wind Rating Criteria** Four 72 in x 8 in panel antennas per sector

**Wind Rating Test Method** TIA/EIA-222-G

## Environmental Specifications

**Man Rating** 250 lb vertical man load at 15 mph (BWS)

## Packaging and Weights

# MC-DPM-B

---

<b>Included</b>	Dual pipe frames   Pipe mounts
<b>Packaging quantity</b>	1
<b>Weight, net</b>	32.7 kg   72.091 lb

## Regulatory Compliance/Certifications

<b>Agency</b>	<b>Classification</b>
ISO 9001:2015	Designed, manufactured and/or distributed under this quality management system



### \* Footnotes

<b>Man Rating</b>	BWS—w Base Wind Speed
<b>Wind Rating</b>	BWS—w Base Wind Speed; FBC—Florida Building Code