

## SD210D-SF2P4SNM

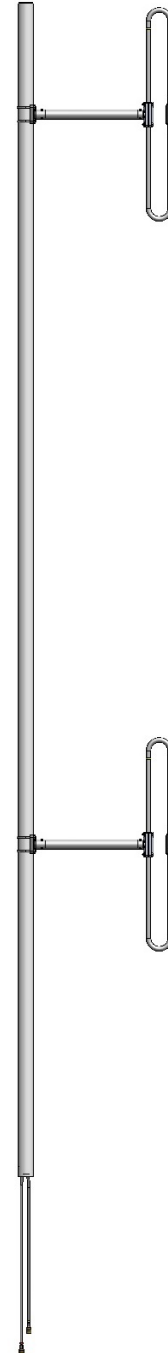
1 dipole, dual array 2 feed cables, 2.5 dBd, offset, 138-174 MHz

Also referred as: SRL210C/210CNM\*4-2

- Dual single dipole antennas on same mast covering 138-174 MHz
- 2.5 dBd gain with offset pattern
- 200W power handling
- Can be top or side mounted (Universal mount)

**Recommend SMK-125-A3 or SMK-125-A7 for Offset Side Mount.  
Available from Sinclair separately.**

The SD210D series of antennas is highly efficient and offers exceptionally wide bandwidth. It covers the frequency ranges of 118-137 or 138-174 MHz at a VSWR of 1.5:1 or better. Because of its bandwidth, the SD210 series is perfectly suited for multicoupled systems.



www.sinctech.com

| Region    | United States         | Europe, Middle East and Africa       | Caribbean and Latin America    | Canada and rest of the world                             |
|-----------|-----------------------|--------------------------------------|--------------------------------|----------------------------------------------------------|
| Telephone | USA: 1 800 263 3275   | International: +44 (0) 1487 84 28 19 | International: +1 905 726 7676 | Canada: 1 800 263 3275<br>International: +1 905 727 0165 |
| E-mail    | salesusa@sinctech.com | salesuk@sinctech.com                 | salesla@sinctech.com           | salescan@sinctech.com                                    |

### Electrical Specifications

|                            |           |            |
|----------------------------|-----------|------------|
| Frequency Range            | MHz       | 138 to 174 |
| Bandwidth                  | MHz       | 36         |
| Connector                  |           | N-Male     |
| Gain (nominal)             | dBd (dBi) | 2.5 (4.6)  |
| Input VSWR (max)           |           | 1.5:1      |
| Polarization               |           | vertical   |
| Impedance                  | Ω         | 50         |
| Pattern                    |           | Offset     |
| Isolation (typ)            | dB        | 30         |
| Horizontal beamwidth (typ) | degrees   | 210        |
| Vertical beamwidth (typ)   | degrees   | 68         |
| Average Power Input (max)  | W         | 200        |
| Lightning protection       |           | DC ground  |

### Notes

\*1 : Qty 2

### Mechanical Specifications

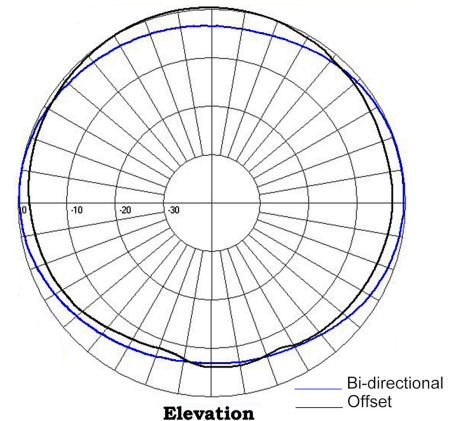
|                                    |          |                                    |
|------------------------------------|----------|------------------------------------|
| Width                              | in (mm)  | 24 (610)                           |
| Depth                              | in (mm)  | 4 (102)                            |
| Length/ Height                     | in (mm)  | 192 (4877)                         |
| Base pipe diameter                 | in (mm)  | 2.38 (60)                          |
| Radiating element material         |          | aluminum                           |
| Base pipe material                 |          | aluminum                           |
| Weight                             | lbs (kg) | 38 (17.25)                         |
| Weight iced (1/2" ice)             | lbs (kg) | 88 (39.95)                         |
| Mounting Hardware (Optional)       |          | Clamp005, Clamp015, or Clamp130 *1 |
| Mounting configurations            |          | Universal Mount                    |
| Recommended For Offset Side Mount: |          | SMK-125-A3 or SMK-125-A7           |

### Ordering Information

Clamps must be ordered separately.

### Environmental Specifications

|                                           |             |                          |
|-------------------------------------------|-------------|--------------------------|
| Temperature range                         | °F (°C)     | -40 to +140 (-40 to +60) |
| Wind Loading Area (Flat Plate Equivalent) | ft² (m²)    | 1.83 (0.17)              |
| Wind Loading Area (1/2" ice)              | ft² (m²)    | 3.25 (0.3)               |
| Rated wind velocity (no ice)              | mph (km/h)  | 145 (233)                |
| Rated wind velocity (1/2" radial ice)     | mph (km/h)  | 110 (177)                |
| Lateral thrust (100 mph No Ice)           | lbs (N)     | 114 (507.1)              |
| Torsional moment (100 mph No Ice)         | ft-lbs (Nm) | 34 (45.9)                |
| Bending moment (100 mph No Ice)           | ft-lbs (Nm) | 218 (294.3)              |
| Tip deflection (100 mph No Ice)           | degrees     | 0.3                      |



| Region    | United States         | Europe, Middle East and Africa       | Caribbean and Latin America    | Canada and rest of the world                             |
|-----------|-----------------------|--------------------------------------|--------------------------------|----------------------------------------------------------|
| Telephone | USA: 1 800 263 3275   | International: +44 (0) 1487 84 28 19 | International: +1 905 726 7676 | Canada: 1 800 263 3275<br>International: +1 905 727 0165 |
| E-mail    | salesusa@sinctech.com | salesuk@sinctech.com                 | salesla@sinctech.com           | salescan@sinctech.com                                    |