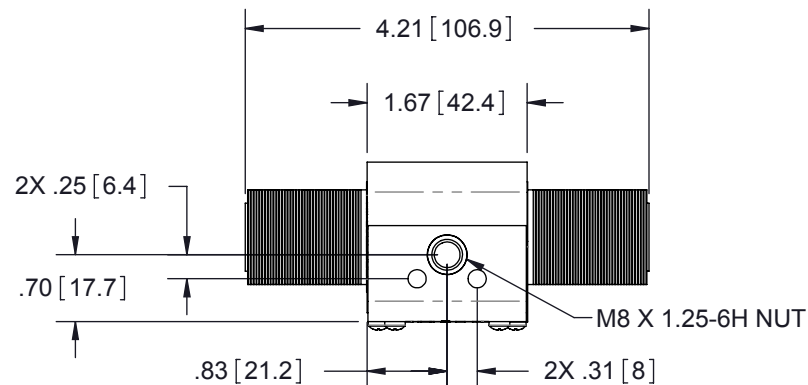


HARDWARE KIT

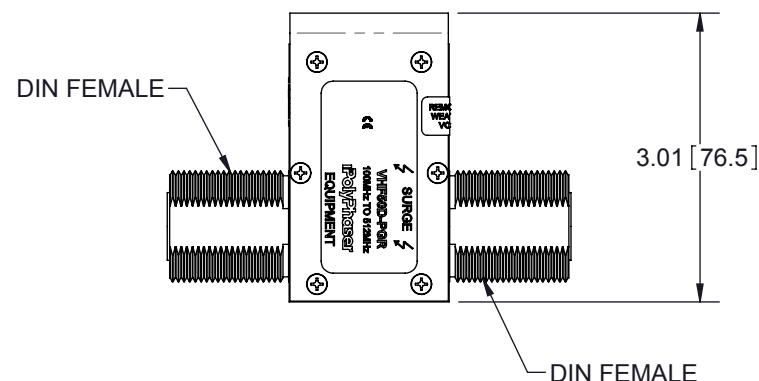
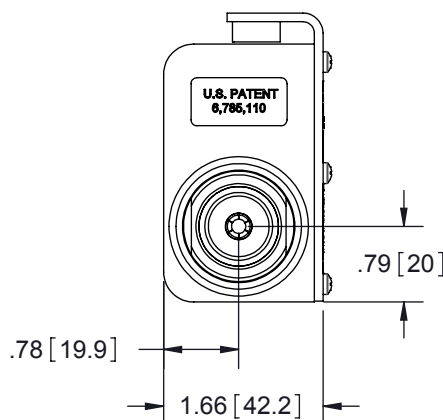
1	RING TERM 6AWG DIN 1.5" ID
1	WASHER 5/16 EXT 18-8 SS
1	SCREW CAP M8 X 1.25 X 10MM
1	O-RING 027 SILICONE
1	NUT M29 x 1.5 SST DIN
1	WASHER 1.15ID FLAT SST TYPE 304
QTY	HARDWARE KIT DESCRIPTION

REVISIONS				
REV.	DESCRIPTION	ECN	DATE	APPROVED
C	REFER TO ECN	11344	1/29/13	CAP



MAXIMUM CHARACTERISTICS

APPLICATION:
WEATHERIZED, FLANGE OR BULKHEAD MOUNT
RoHS COMPLIANT
FREQUENCY RANGE:
100MHz TO 512MHz
VSWR:
≤1.1:1 OVER FREQUENCY RANGE
INSERTION LOSS:
≤0.1dB OVER FREQUENCY RANGE
MAX PEAK INSTANTANEOUS POWER (PIP):
27kW
RF POWER:
750W RMS AVERAGE
MAX. SURGE:
20kA IEC 61000-4-5 8/20μs WAVEFORM
THROUGHPUT ENERGY:
≤500nJ FOR 3kA, 8/20μs WAVEFORM
PIM SPEC:
≤-155dBC (-112dBm); 2 X 20 W INPUT
RELATIVE HUMIDITY:
TO 95%
ENVIRONMENTAL:
MEETS IEC 60529 IPC67
MEETS BELLCORE #TA-NWT-000487
PROCEDURE 4.11, WIND DRIVEN (120MPH)
RAIN INTRUSION TEST.
TEMPERATURE:
-50°C TO +85°C STORAGE/OPERATING
CE COMPLIANT



CUSTOMER APPROVAL: _____ DATE: _____

ALL DIMENSIONS SHOWN ARE FOR REFERENCE ONLY.

<div>UNLESS OTHERWISE SPECIFIED LEADING DIMENSIONS ARE INCHES DIMENSIONS IN [] ARE MILLIMETERS</div> <div>TOLERANCES: FRACTIONS=± 1/32 .XX=± .01 ANGLES=± 1° .XXX=± .005</div> <div>NOTICE: THE INFORMATION AND DESIGN IN THIS DOCUMENT IS THE PROPERTY OF POLYPHASER CORPORATION. ALL RIGHTS RESERVED.</div> <div>THIRD-ANGLE PROJECTION</div> <div></div>	DRAWN	HMB	DATE				SHEET	1	OF	1
	ENG APPD	CAP	4/18/11				TITLE			SCALE
	PRODUCT MGR	SD	4/18/11	100-512MHz VHF COMB 750W FEM DIN PRESSFIT						
	MARKETING APPD	LJ	4/15/11		CUSTOMER SPECIFICATION					
	PROJECT NO.		DD70224			SIZE				CAGE
DOCUMENT NAME		VHF50D-PGR-C		A	61114	VHF50D-PGR	C			

THESE COMMODITIES, TECHNOLOGY OR SOFTWARE WERE EXPORTED FROM THE UNITED STATES IN ACCORDANCE WITH THE EXPORT ADMINISTRATION REGULATIONS. DIVERSION CONTRARY TO U.S. LAW PROHIBITED.