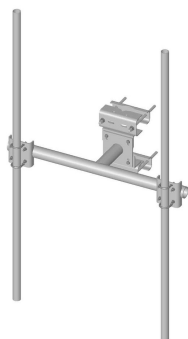


# SF-DPM2-96



Co-location Dual Pipe Mount Kit; includes (2) 2-3/8 in OD x 96 in pipes

## Product Classification

**Product Type** Co-location dual pipe mount kit

## General Specifications

<b>Mounting</b>	Angle 60°, 203.2 mm (8 in)   Angle 90°, 152.4 mm (6 in)   Straight or tapered legs up to 203.2 mm (8 in) OD
<b>Note</b>	Two 72 in x 8 in panel antenna per sector
<b>Pipe, quantity</b>	2
<b>Tower Taper</b>	Non-tapered   Tapered

## Dimensions

<b>Height</b>	2,438.4 mm   96 in
<b>Face Width</b>	1.463 m   4.8 ft
<b>Width</b>	1,447.8 mm   57 in
<b>Length</b>	0.396 m   1.3 ft
<b>Pipe Length</b>	2,438.4 mm   96 in
<b>Face Support Pipe Diameter</b>	88.9 mm   3.5 in
<b>Mounting Diameter, maximum</b>	203.2 mm   8 in
<b>Mounting Diameter, minimum</b>	0 mm   0 in
<b>Pipe Outer Diameter</b>	60.96 mm   2.4 in
<b>Stand-off Distance</b>	391.16 mm   15.4 in

## Material Specifications

**Material Type** Hot dip galvanized steel

## Mechanical Specifications

<b>Wind Rating</b>	120 mph (BWS) at 150 ft AGL   140 mph (3-second gust) at 150 ft AGL using Exposure D per FBC
--------------------	--

# SF-DPM2-96

Wind Rating Test Method      TIA/EIA-222

## Environmental Specifications

Man Rating      250 lb vertical man load at 15 mph (BWS)

## Packaging and Weights

Included      Clamps   |   Frame   |   Pipe mounts   |   Pipes   |   Saddle mounts

Packaging quantity      1

Weight, net      122.2 kg   |   269.405 lb

## Regulatory Compliance/Certifications

Agency	Classification
ISO 9001:2015	Designed, manufactured and/or distributed under this quality management system



## \* Footnotes

Man Rating	BWS—w Base Wind Speed
Wind Rating	BWS—w Base Wind Speed; FBC—Florida Building Code