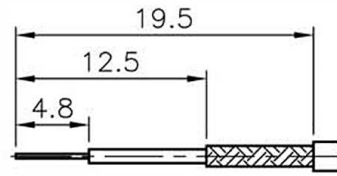


REVISIONS

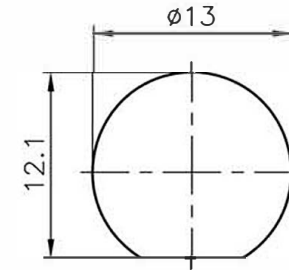
ISS	SYMBOL	DESCRIPTION \ DATE

FOR CUSTOMER

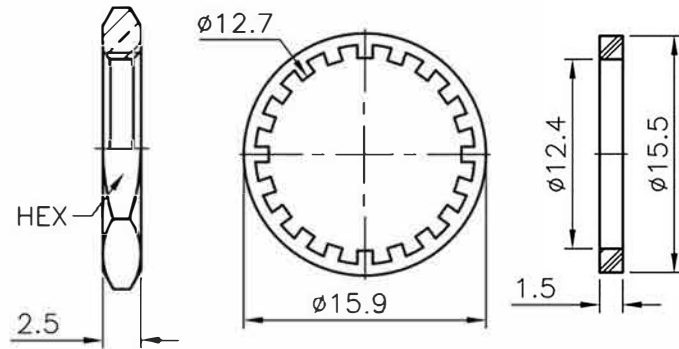
REMARK: RoHS COMPLIANT



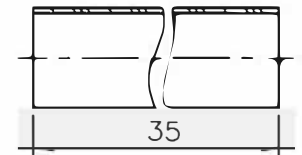
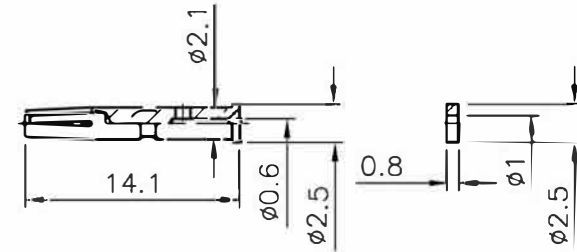
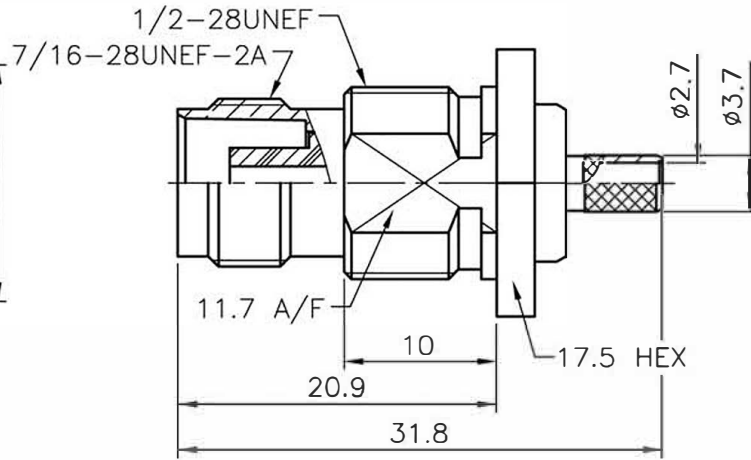
RECOMMENDED CABLE STRIPPING DIM'S



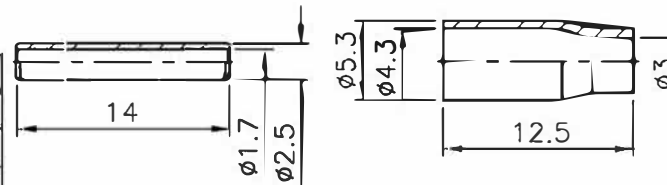
RECOMMENDED MOUNTING HOLE



- NOTES: FINISH (PLATING THICKNESS IN MICRO-INCHES)
1. BRASS PER QQ-B-626
  2. NICKEL PL 70 MIN THICK OVER COPPER STRIKE
  3. GOLD PL FLUSH OVER NICKEL PL 70 MIN THICK OVER COPPER STRIKE
  4. TEFLON MIL-P-19468
  5. BRASS JIS H 3250, C 2700



1. CRIMPED FERRULE  
HEX CRIMP SIZE .178" (4.52mm)
2. CRIMPED CONTACT PIN  
HEX CRIMP SIZE .068" (1.72mm)
3. MAX. PANEL THICKNESS=6.5mm



NO.	DESCRIPTION	MATERIAL	FINISH	Q'TY	DRAWING NO.
	HEAT SHRINK TUBE		BLACK		
	NUT	NOTE 1	NOTE 2		
	WASHER	SS41	NOTE 2		
	GASKET	RUBBER	ORANGE		
	FERRULE	NOTE 5	NOTE 2		
	SPACER	NOTE 1	NOTE 2		
	SPACER	NOTE 4	WHITE		
	CONTACT PIN	NOTE 1	NOTE 3		
	BRAID HOLDER	NOTE 1	NOTE 2		
	INSULATOR	NOTE 4	WHITE		
	BODY	NOTE 1	NOTE 2		
	HEX BODY	NOTE 1	NOTE 2		

DIMENSIONS ARE IN MILLIMETERS				PART NO.	
UNLESS OTHERWISE SPECIFIED TOLERANCES				CON-25-100	
0.5~6 = ±0.2				APPROVED	DATE
>6~30 = ±0.4				CHECKED	DATE
>30~120 = ±0.6				DRAWN	DATE
>120~315 = ±1					
>315~1000 = ±1.6					
ANGLES = ±5°					
SCALE	2/1	ISSUE	A1		

VENTEV	
TITLE	TNC Bulkhead Jack for TWS-100 Cable
DRAWING NO.	
FILE NO.	