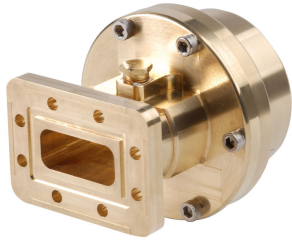


164SE



Fixed-tuned CPR137G for elliptical waveguide 64

Product Classification

Product Type Elliptical waveguide connector

General Specifications

Attachment Method Tab-flare | Tool-flare
Body Style Straight, fixed-tuned
Inner Contact Plating Unplated
Interface CPR137G
Outer Contact Plating Unplated
Pressurizable Yes

Dimensions

Width 82.55 mm | 3.25 in
Length 89.408 mm | 3.52 in
Transition Length 56.388 mm | 2.22 in
Waveguide Size WR137 | WG14 | R70

Electrical Specifications

Insertion Loss, typical 0.01 dB
Operating Frequency Band 6.425 – 7.75 GHz
Peak Power at Frequency, maximum 107.00 kW @ 7.40 GHz

Material Specifications

Material Type Brass

Environmental Specifications

164SE

Operating Temperature -55 °C to +85 °C (-67 °F to +185 °F)

Storage Temperature -55 °C to +85 °C (-67 °F to +185 °F)

Packaging and Weights

Weight, net 1.7 kg | 3.748 lb

Regulatory Compliance/Certifications

Agency	Classification
CHINA-ROHS	Below maximum concentration value
ISO 9001:2015	Designed, manufactured and/or distributed under this quality management system
REACH-SVHC	Compliant as per SVHC revision on www.commscope.com/ProductCompliance
ROHS	Compliant



* Footnotes

Insertion Loss, typical $0.05\sqrt{\text{freq}}$ (GHz) (not applicable for elliptical waveguide)