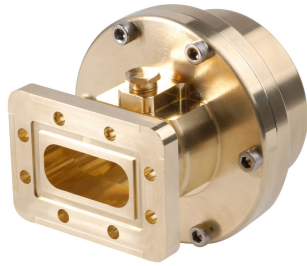


# 163SE

---



Fixed-tuned CPR137G for elliptical waveguide 63

## Product Classification

**Product Type** Elliptical waveguide connector

## General Specifications

**Attachment Method** Tab-flare | Tool-flare  
**Body Style** Straight, fixed-tuned  
**Inner Contact Plating** Unplated  
**Interface** CPR137G  
**Outer Contact Plating** Unplated  
**Pressurizable** Yes

## Dimensions

**Width** 85.852 mm | 3.38 in  
**Length** 85.344 mm | 3.36 in  
**Transition Length** 52.832 mm | 2.08 in  
**Waveguide Size** WR137 | WG14 | R70

## Electrical Specifications

**Insertion Loss, typical** 0.01 dB  
**Operating Frequency Band** 5.725 – 7.125 GHz  
**Peak Power at Frequency, maximum** 102.00 kW @ 6.78 GHz

## Material Specifications

**Material Type** Brass

## Environmental Specifications

# 163SE

---

**Operating Temperature** -55 °C to +85 °C (-67 °F to +185 °F)

**Storage Temperature** -55 °C to +85 °C (-67 °F to +185 °F)

## Packaging and Weights

**Weight, net** 1.7 kg | 3.748 lb

## Regulatory Compliance/Certifications

Agency	Classification
CHINA-ROHS	Below maximum concentration value
ISO 9001:2015	Designed, manufactured and/or distributed under this quality management system
REACH-SVHC	Compliant as per SVHC revision on <a href="http://www.commscope.com/ProductCompliance">www.commscope.com/ProductCompliance</a>
ROHS	Compliant



## \* Footnotes

**Insertion Loss, typical**  $0.05\sqrt{\text{freq}}$  (GHz) (not applicable for elliptical waveguide)