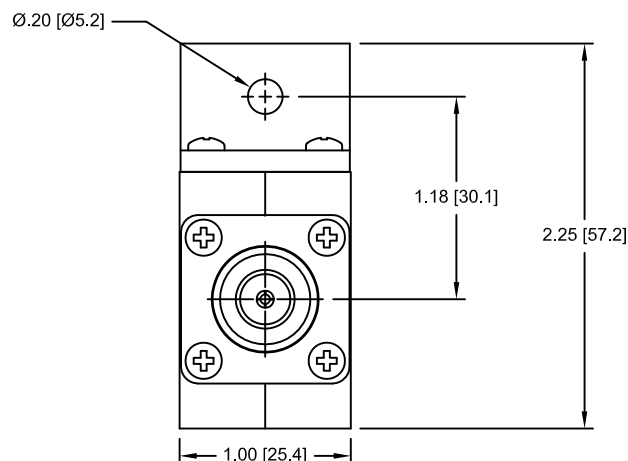
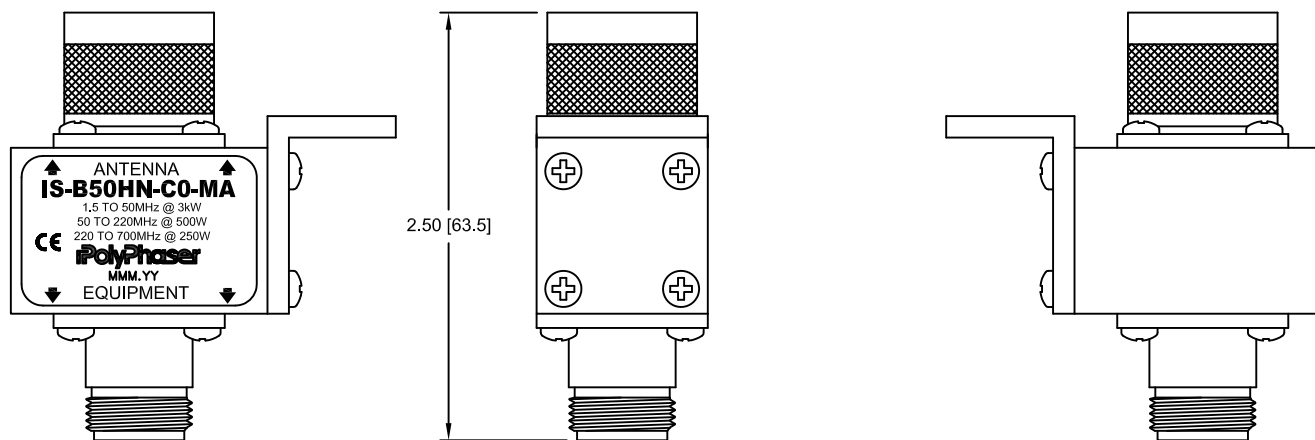


REVISIONS				
REV.	DESCRIPTION	ECN	DATE	APPROVED
D	REFER TO ECN	11224	12/14/12	KCB



MAXIMUM CHARACTERISTICS

APPLICATION:
BULKHEAD MOUNT
 FREQUENCY RANGE:
1.5MHz TO 700MHz
 VSWR:
 $\leq 1.1:1$ @ 1.5MHz TO 700MHz
 INSERTION LOSS:
 $\leq 0.1\text{dB}$ OVER FREQUENCY RANGE
 THROUGHPUT ENERGY:
 $\leq 20\text{mJ}$
 MAX POWER:
VHF 500W, UHF 250W, HF 3kW
 TURN-ON:
 $\pm 1200\text{Vdc} \pm 20\%$ 7ns FOR 2kV/ns
 SURGE:
50kA IEC 61000-4-5 8/20 μ s WAVEFORM 500 JOULES.
 VIBRATION:
1G AT 5Hz TO 100Hz
 TEMPERATURE:
-45°C TO +85°C STORAGE/OPERATING +50°C
 EU RoHS COMPLIANT

CUSTOMER APPROVAL _____ DATE: _____

ALL DIMENSIONS SHOWN ARE FOR REFERENCE ONLY.

UNLESS OTHERWISE SPECIFIED LEADING DIMENSIONS ARE INCHES DIMENSIONS IN [] ARE MILLIMETERS	DRAWN S. HALL	DATE 10/4/99		
	ENG APPD K. BARTEL	3/20/00		
	PRODUCT MGR M. MATTSOON	3/17/00		
	MARKETING APPD G. HORSTMAN	3/24/00		
TOLERANCES: FRACTIONS=± ANGLES= 1°	XX=± .03 XXX=± .010	PROJECT NO.	TITLE IS-B50HN-C0-MA CUSTOMER PRINT	
MATERIAL: NOTED	THIRD-ANGLE PROJECTION	NOTICE: THE INFORMATION AND DESIGN IN THIS DOCUMENT IS THE PROPERTY OF POLYPHASER CORPORATION. ALL RIGHTS RESERVED.	SIZE A	CAGE 61114
			DOCUMENT NAME IS-B50HN-C0-MAC	REV D
			SCALE= NTS	SHEET 1 of 1

THESE COMMODITIES, TECHNOLOGY OR SOFTWARE WERE EXPORTED FROM THE UNITED STATES IN ACCORDANCE WITH THE EXPORT ADMINISTRATION REGULATIONS. DIVERSION CONTRARY TO U.S. LAW PROHIBITED.