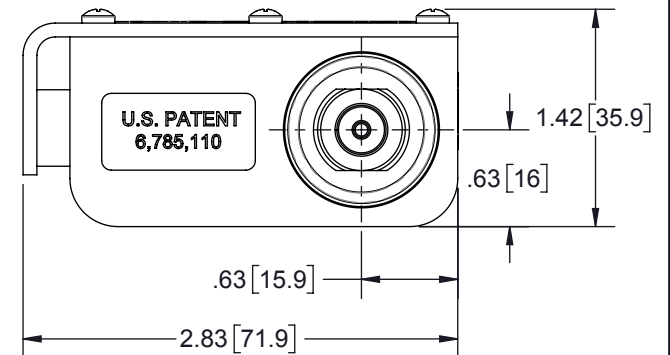
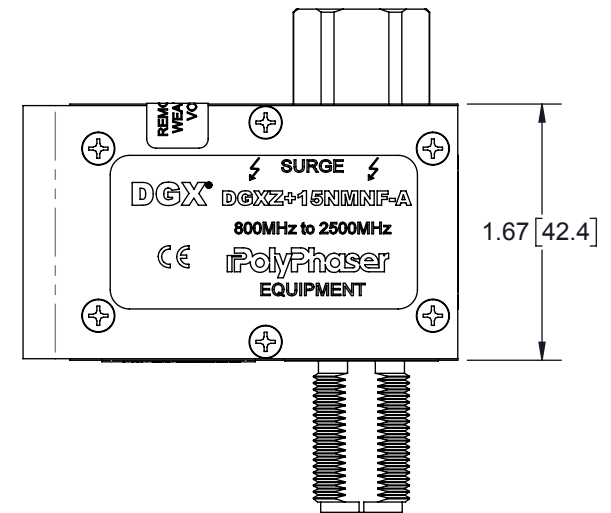
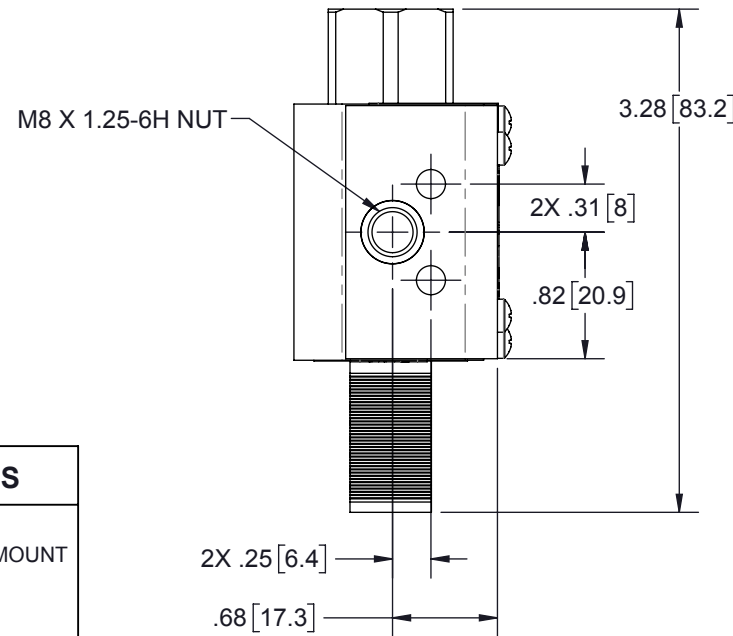


REVISIONS				
REV.	DESCRIPTION	ECN	DATE	APPROVED
G	REFER TO ECN	11238	12/19/12	KCB



MAXIMUM CHARACTERISTICS

APPLICATION:
WEATHERIZED, FLANGE OR BULKHEAD MOUNT

FREQUENCY RANGE:
800MHz TO 2500MHz

VSWR:
≤1.1:1 OVER FREQUENCY RANGE

INSERTION LOSS:
≤0.1 dB OVER FREQUENCY RANGE

POWER:
300Wrms AVERAGE

TURN ON:
+16.5Vdc

TURN ON TIME:
4ns FOR 2kV/ns

MAX. SURGE:
20kA IEC 61000-4-5 8/20μs WAVEFORM

THROUGHPUT ENERGY:
≤500μJ FOR 3kA, 8/20μs WAVEFORM

USER VOLTAGE:
+15Vdc MAX

USAGE CURRENT:
≤4.0A CONTINUOUS

RELATIVE HUMIDITY:
TO 95%

ENVIRONMENTAL:
MEETS IEC 60529 IP67
MEETS BELLCORE #TA-NWT-000487
PROCEDURE 4.11, WIND DRIVEN (120MPH)
RAIN INTRUSION TEST.

TEMPERATURE:
-50 °C TO +85 °C STORAGE/OPERATING

CUSTOMER APPROVAL: _____ DATE: _____

ALL DIMENSIONS SHOWN ARE FOR REFERENCE ONLY.

<small>UNLESS OTHERWISE SPECIFIED LEADING DIMENSIONS ARE INCHES DIMENSIONS IN [] ARE MILLIMETERS</small> <small>TOLERANCES: FRACTIONS=± 1/32 .XX=± .03 ANGLES=± 1 ° .XXX=± .010</small> <small>NOTICE: THE INFORMATION AND DESIGN IN THIS DOCUMENT IS THE PROPERTY OF POLYPHASER CORPORATION. ALL RIGHTS RESERVED.</small>	DRAWN I. BENNETT	DATE 6/20/02			SHEET 1 OF 1
	ENG APPD K. BARTEL	6/20/02			SCALE NTS
	PRODUCT MGR P. HEEREN	6/20/02			
	MARKETING APPD R. MATHEUS	6/20/02			
PROJECT NO.			TITLE CUSTOMER PRINT DGXZ+15NMNF-A CUSTOMER SPECIFICATION		
DOCUMENT NAME DGXZ+15NMNF-A-C		SIZE A	CAGE 30992	PROD CAT RFP	PART NUMBER DGXZ+15NMNF-A
				REV G	

THESE COMMODITIES, TECHNOLOGY OR SOFTWARE WERE EXPORTED FROM THE UNITED STATES IN ACCORDANCE WITH THE EXPORT ADMINISTRATION REGULATIONS. DIVERSION CONTRARY TO U.S. LAW PROHIBITED.