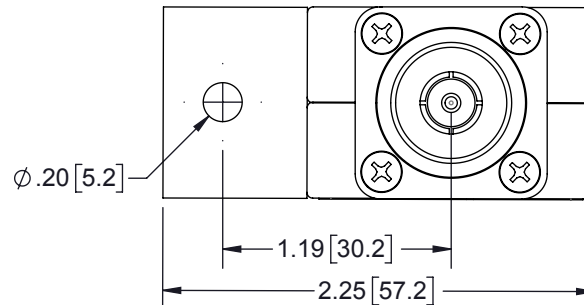


HARDWARE KIT INCLUDES:

QTY	DESCRIPTION
1	O-RING 114 EPDM
2	WASHER 10 INT 4-10 SS
1	SCREW 10-32x.75 HEX MS 18-8 SS
1	NUT 10-32 HEX 18-8 SS

REVISIONS				
REV.	DESCRIPTION	ECN	DATE	APPROVED
K	REFER TO ECN	13641	4/26/16	EJD



MAXIMUM CHARACTERISTICS

APPLICATION:

FOR TWO WAY RADIO AND SCADA APPLICATIONS
NON-WEATHERIZED, BULKHEAD MOUNT

SURGE:

20kA IEC 61000-4-5 8/20μs WAVEFORM MULTIPLE

TURN-ON:

600Vdc ±20%

TURN-ON TIME:

2.5ns for 2kV/ns

FREQUENCY RANGE:

10MHz to 1GHz

VSWR:

≤ 1.1 to 1 OVER FREQUENCY RANGE

INSERTION LOSS:

≤ 0.1dB OVER FREQUENCY RANGE

MAX POWER:

1.5kW @ 10 to 50MHz

375W @ 50 to 220MHz

125W @ 220 to 700MHz

50W @ 700 to 1000MHz

THROUGHPUT ENERGY:

≤ 3.5mJ @ 3kA 8/20μs WAVEFORM

TEMPERATURE:

STORAGE: -55°C to +85°C

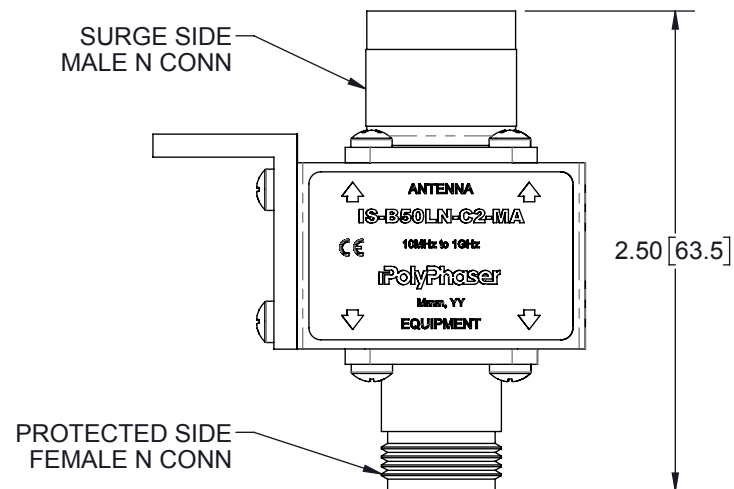
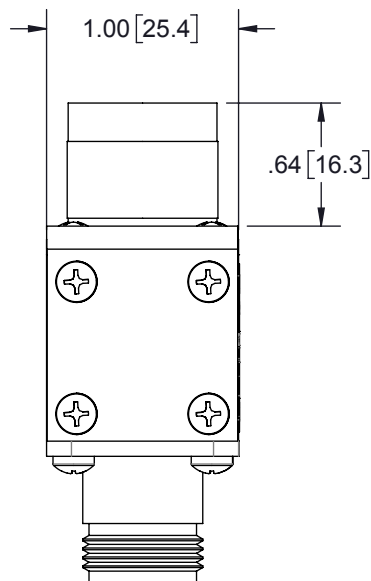
OPERATING: -50°C to +50°C

VIBRATION:

1G up to 100Hz

CE COMPLIANT

RoHS COMPLIANT



CUSTOMER APPROVAL: _____ DATE: _____

ALL DIMENSIONS SHOWN ARE FOR REFERENCE ONLY.

<small>UNLESS OTHERWISE SPECIFIED LEADING DIMENSIONS ARE INCHES DIMENSIONS IN [] ARE MILLIMETERS</small> <small>TOLERANCES: FRACTIONS=± 1/32 .XX=± .03 ANGLES=± 1° .XXX=± .010</small> <small>NOTICE: THE INFORMATION AND DESIGN IN THIS DOCUMENT IS THE PROPERTY OF POLYPHASER CORPORATION. ALL RIGHTS RESERVED.</small>	DRAWN	CG	DATE	8/9/96			SHEET	1	OF	1
	ENG APPD	PA	8/9/96				SCALE	1:1		
	PRODUCT MGR	TK	8/9/96				BROADBAND 10MHz TO 1GHz N FEM BLKH <small>CUSTOMER SPECIFICATION</small>			
	MARKETING APPD	RM	8/9/96							
PROJECT NO.					SIZE	CAGE	PROD CAT	PART NUMBER	REV	
DOCUMENT NAME					IS-B50LN-C2-MAC	A	30992	RFP	IS-B50LN-C2-MA	K

THESE COMMODITIES, TECHNOLOGY OR SOFTWARE WERE EXPORTED FROM THE UNITED STATES IN ACCORDANCE WITH THE EXPORT ADMINISTRATION REGULATIONS. DIVERSION CONTRARY TO U.S. LAW PROHIBITED.