

WT-HRM2-72



Hand Rail Mount, 2-3/8 in x 72 in plain end pipe included

Product Classification

Product Type Water tower mount

General Specifications

Mounting Handrail | Toe board

Pipe, quantity 1

Dimensions

Height 1,828.8 mm | 72 in

Width 203.2 mm | 8 in

Length 609.6 mm | 24 in

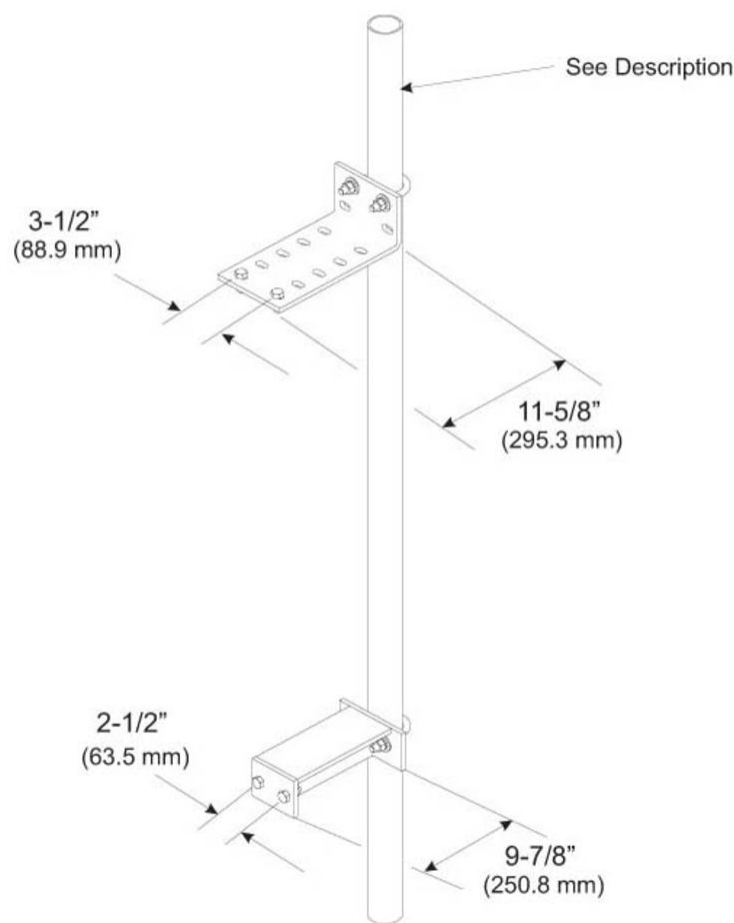
Pipe Length 1,828.8 mm | 72 in

Pipe Outer Diameter 60.96 mm | 2.4 in

Stand-off Distance 228.6 mm | 9 in

WT-HRM2-72

Outline Drawing



Material Specifications

Material Type Hot dip galvanized steel

Packaging and Weights

Included Hardware | Mount | Plain end pipes

Packaging quantity 1

Weight, net 19.096 kg | 42.1 lb

Regulatory Compliance/Certifications

Agency **Classification**

WT-HRM2-72

ISO 9001:2015

Designed, manufactured and/or distributed under this quality management system



Included Products

MT-651 — Plain End Pipe, 2-3/8 in OD x 72 in

WT-HRM2-B — Hand Rail Mount for 2-3/8 in OD mounting pipe, plain end pipe not included