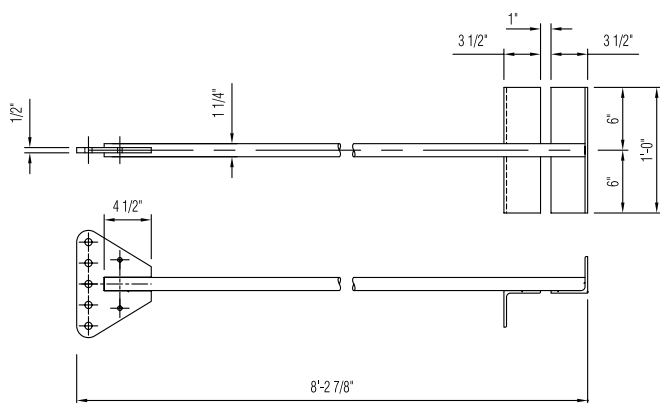


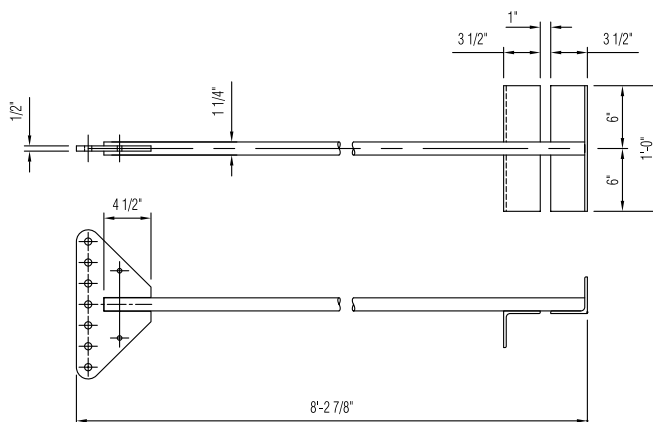


1800 TLWD Guyed Tower Anchor Shafts

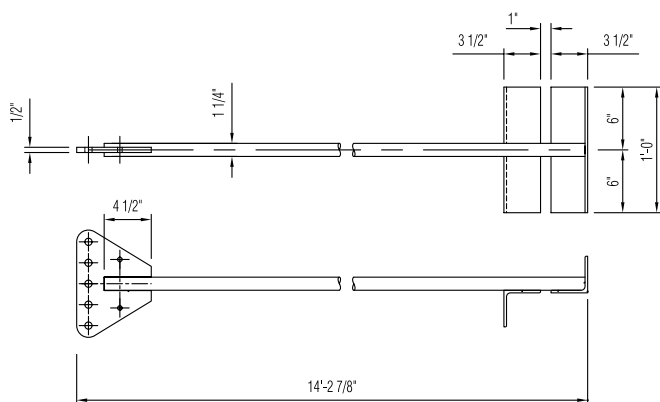
Item # C30-129-026



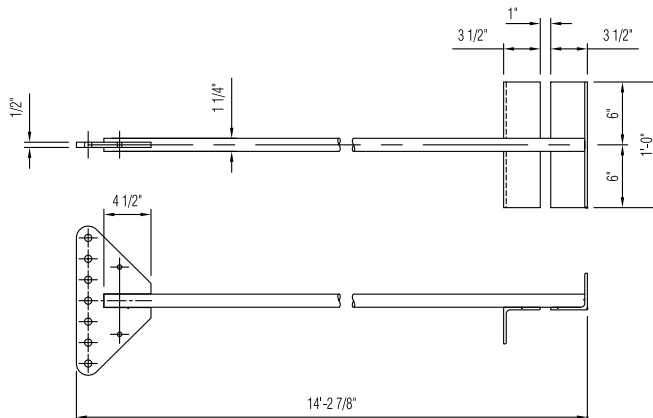
Item # C30-129-032



Item # C30-129-027



Item # C30-129-033



Item Number	Anchor Length	Anchor Head Hole Size	Plate Thickness	Rod Diameter	Guy Wire Size (EHS)	Turnbuckle Required	Critical Anchor Rod Slopes (from Horizontal)		Anchor Block Depth	Anchor Shaft Capacity (Including 1/3 allowable stress increase)
							Min.	Max.		
C30-129-026	8'-2 7/8"	(5) 3/4"	1/2"	1 1/4"	3/16" & 1/4" 5/16" & 3/8"	1/2" 3/4"	32 32	50 50	4'-0" (A4, B4) 4'-0" (A4, B4)	49.1K
C30-129-032	8'-2 7/8"	(7) 3/4"	1/2"	1 1/4"	3/16" & 1/4" 5/16" & 3/8"	1/2" 3/4"	32 32	50 50	4'-0" (B4) 4'-0" (B4)	49.1K
C30-129-027	14'-2 7/8"	(5) 3/4"	1/2"	1 1/4"	3/16" & 1/4" 5/16" & 3/8"	1/2" 3/4"	36 36	46 46	8'-0" (A8) 8'-0" (A8)	49.1K
C30-129-033	14'-2 7/8"	(7) 3/4"	1/2"	1 1/4"	3/16" & 1/4" 5/16" & 3/8"	1/2" 3/4"	36 36	46 46	8'-0" (A8) 8'-0" (A8)	49.1K