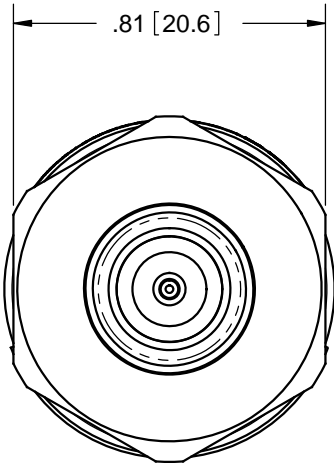
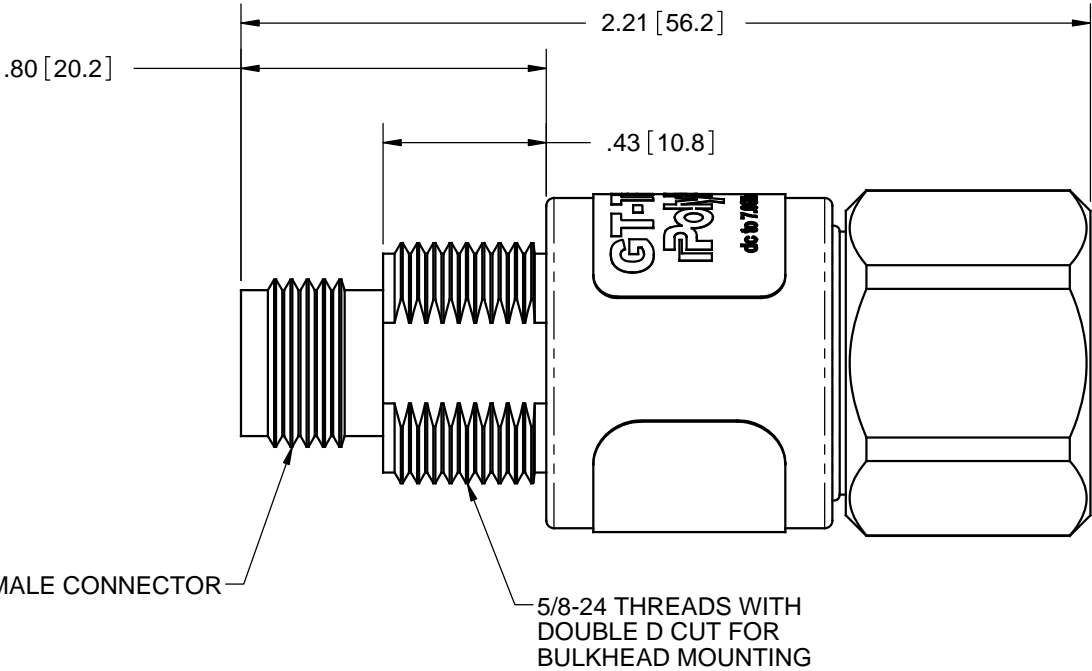
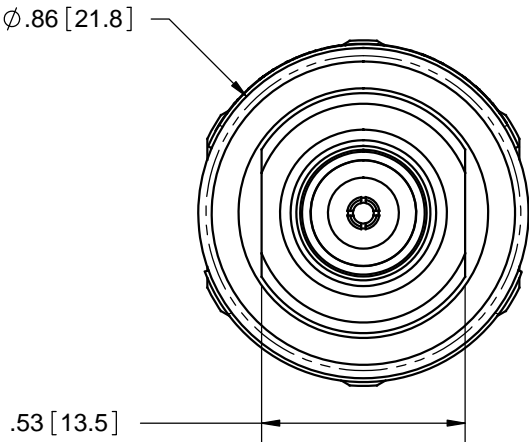


HARDWARE KIT  
SCALE 1:2

2	SCREW 8-32x.50 PHIL MS PAN 18-8 SS
2	WASHER #8 410 SS INTERNAL
2	NUT 8-32 HEX 18-8 SS
1	BRACKET MOUNTING AL 5052-H32 CHINA
QTY	DESCRIPTION

REVISIONS				
REV.	DESCRIPTION	ECN	DATE	APPROVED
F	REFER TO ECN	11854	7/19/13	MTH
G	CHANGE IP65 TO IP67	11988	9/10/2013	JJ

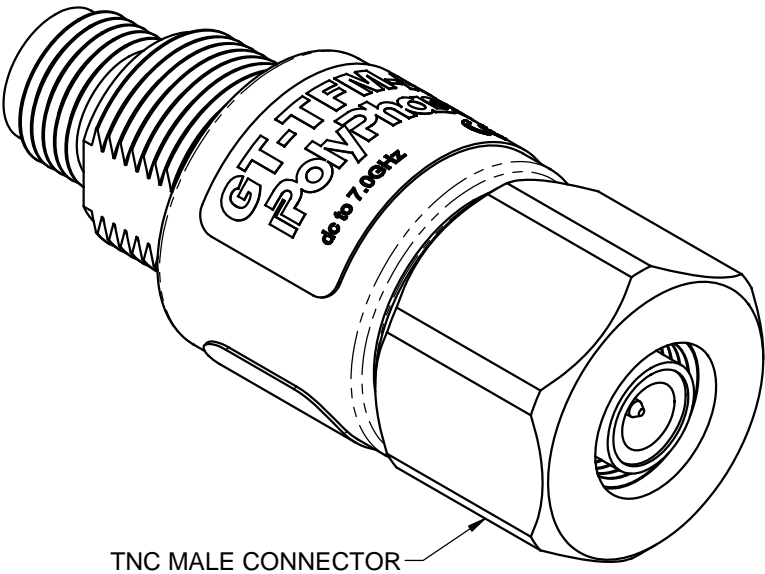


MAXIMUM CHARACTERISTICS

APPLICATION:  
BULKHEAD MOUNT/ALUMINUM CONSTRUCTION  
WEATHER PROOF WHEN INSTALLED  
FREQUENCY RANGE:  
dc TO 7.0GHz  
MAX RF POWER:  
90W/C @ 30MHz  
9W/CW @ 3GHz  
VSWR:  
dc TO 2.0GHz @ <1.1 TO 1  
dc TO 3.0GHz @ <1.25 TO 1  
dc TO 7.0GHz @ <1.4 TO 1  
INSERTION LOSS:  
dc TO 3.0GHz @ <0.1dB  
dc TO 4.0GHz @ <0.25dB  
dc TO 7.0GHz @ <0.5dB  
RETURN LOSS:  
dc TO 2.0GHz @ >30dB  
dc TO 3.0GHz @ >20dB  
dc TO 7.0GHz @ >15dB

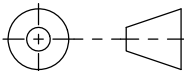
DISCHARGE DEVICE CHARACTERISTICS  
SURGE:  
20kA ONE TIME @ IEC 61000-4-5 8/20µs WAVEFORM  
IMPULSE SPARKOVER:  
500 VOLTS @ 1000V/µs  
dc SPARKOVER ±20%:  
300 VOLTS  
dc HOLDOVER:  
80 VOLTS @ <150ms  
MAX OPERATING CURRENT:  
10A  
TEMPERATURE:  
-55°C TO +85°C STORAGE/OPERATING  
ENVIRONMENTAL:  
MEETS IEC 60529 IP67

CE COMPLIANT



TNC MALE CONNECTOR

THESE COMMODITIES, TECHNOLOGY OR SOFTWARE WERE EXPORTED FROM THE UNITED STATES IN ACCORDANCE WITH THE EXPORT ADMINISTRATION REGULATIONS. DIVERSION CONTRARY TO U.S. LAW PROHIBITED.

UNLESS OTHERWISE SPECIFIED LEADING DIMENSIONS ARE INCHES DIMENSIONS IN [ ] ARE MILLIMETERS	DRAWN R. DUNNING	DATE 6/10/09	<div><div>PolyPhaser®</div><div>GAS TUBE NON-REPLACEABLE</div><div>CUSTOMER SPECIFICATION</div></div>				
	ENG APPD JJ	6/14/12					
	PRODUCT MGR SJD	6/18/12					
	MARKETING APPD LJ	6/18/12					
TOLERANCES: FRACTIONS=± 1/32 .XX=± .03 ANGLES=± 1 ° .XXX=± .010	PROJECT NO.		TITLE				
MATERIAL NA							
THIRD-ANGLE PROJECTION 	NOTICE: THE INFORMATION AND DESIGN IN THIS DOCUMENT IS THE PROPERTY OF TRANSECTOR SYSTEMS. ALL RIGHTS RESERVED.		SIZE	CAGE	PART NUMBER	REV	
			B	61114	GT-TFM-AL	G	
			SCALE	PROD CAT	DOCUMENT NAME	SHEET	OF
			2:1	RFP	GT-TFM-AL-C	1	1