

These Commodities, or technology are exported from the U.S. in accordance with the Export Administration Regulations. Diversion contrary to U.S. law prohibited.

# REVISIONS

REV LTR	DATE	ENG	MKTG	Q.A.
B	08/24/06 SH	LC	SD	LJ

## MAXIMUM CHARACTERISTICS DATA (IX-H)

TURN-ON (@10mA):  
**+9Vdc ±10%**  
 UL 497B STRIKE VOLTAGE BREAKDOWN  
 (100 Vdc /SEC RISE):  
**+8.4 TO +9.6 Vdc**  
 RESISTANCE:  
 $1\Omega \pm 20\%$   
 DATA RATE:  
 UP TO 100Mbps  
 MAX HOLDING CURRENT:  
 400mA @ +20°C  
 620mA @ -40°C  
 290mA @ +50°C  
 235mA @ +65°C

## MAXIMUM CHARACTERISTICS (DC48)

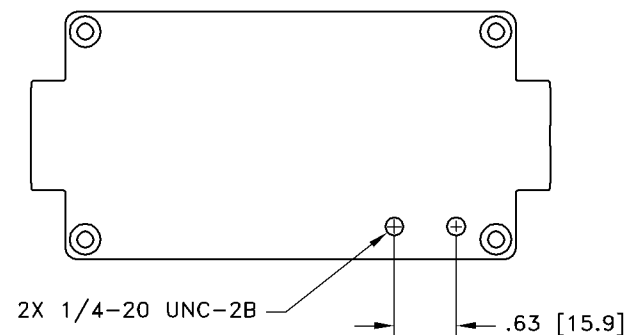
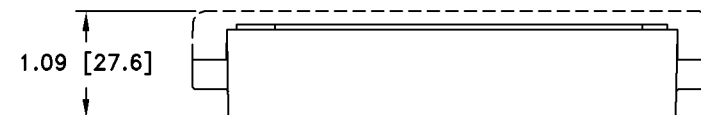
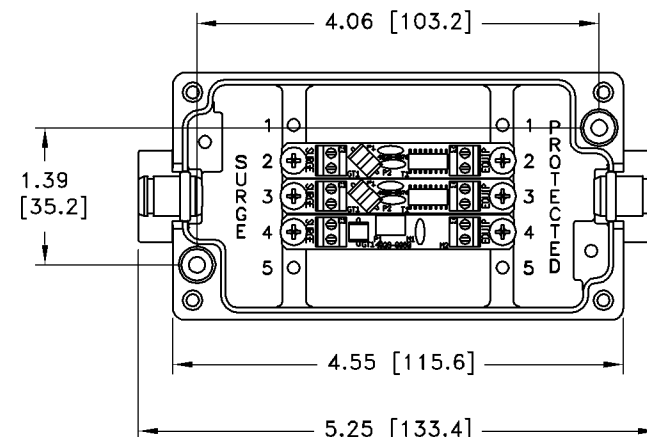
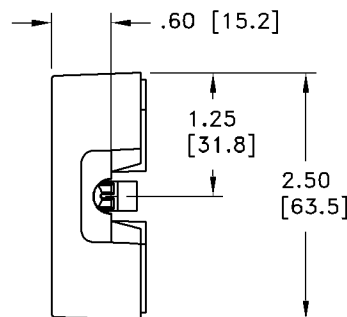
TURN-ON (@10mA):  
**±56Vdc ±10%**  
 UL 497B STRIKE VOLTAGE BREAKDOWN  
 (100 Vdc /SEC RISE):  
**±54.8 TO ±58.0 Vdc**  
 RESISTANCE:  
 $.05\Omega \pm 20\%$   
 CURRENT:  
 2A MAX  
 MAX HOLDING CURRENT:  
 3.00A @ +20°C  
 4.13A @ -40°C  
 2.43A @ +50°C  
 2.10A @ +65°C

## GENERAL CHARACTERISTICS

SURGE:  
 BELLCORE 1089 10/1000μs 100A  
 TEMPERATURE:  
 -40°C TO +65°C STORAGE/OPERATING  
 WIRE RANGE:  
 16 TO 28 AWG.  
 CORD DIAMETER:  
 0.114 TO 0.225 INCH W/ SMALL GROMMET  
 0.250 TO 0.350 INCH W/ LARGE GROMMET  
 APPLICATION:  
 PANEL MOUNT.  
 WEATHERIZED AFTER PROPER INSTALLATION OF  
 GROMMETS AND TORQUING OF LID.  
 ENVIRONMENTAL:  
 MEETS BELLCORE #TA-NWT-000487 PROCEDURE 4.11,  
 WIND DRIVEN RAIN (70MPH) RAIN INTRUSION TEST.

## NOTES:

- TORQUE 4X M4-20mm LID SCREWS TO 11lbf-in MINIMUM.
- ENSURE THAT ALL GROMMETS ARE PROPERLY SEATED FOR ENVIRONMENTAL SPECIFICATIONS.



CUSTOMER APPROVAL: \_\_\_\_\_ DATE: \_\_\_\_\_  
 ALL DIMENSIONS SHOWN ABOVE ARE FOR REFERENCE ONLY.

DRAFTER R. SWART	DATE 09/03/03	 P.O. BOX 9000 MINDEN, NV 89423 TEL: 775-782-2511 FAX: 775-782-4476 DWG NO/PART NO/DESCRIPTION <b>IX-2H1DC48</b> <b>CUSTOMER PRINT</b>			
MECH ENGINEER J. JONES	DATE 09/05/03				
ELEC ENGINEER L. CHANG	DATE 09/05/03				
MARKETING S. DOTTER	DATE 09/05/03				
QUALITY DEPT L. JACQUES	DATE 09/05/03	CAGE CODE 61114	FILE NAME -C1	SCALE NOTED	SHEET 1 OF 1