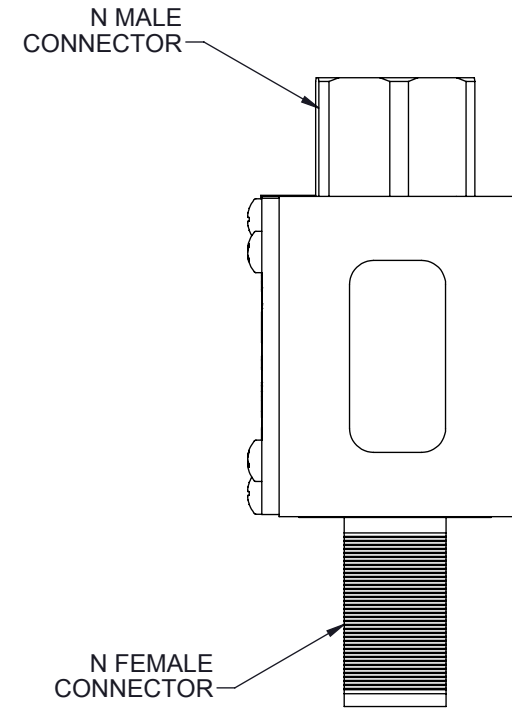
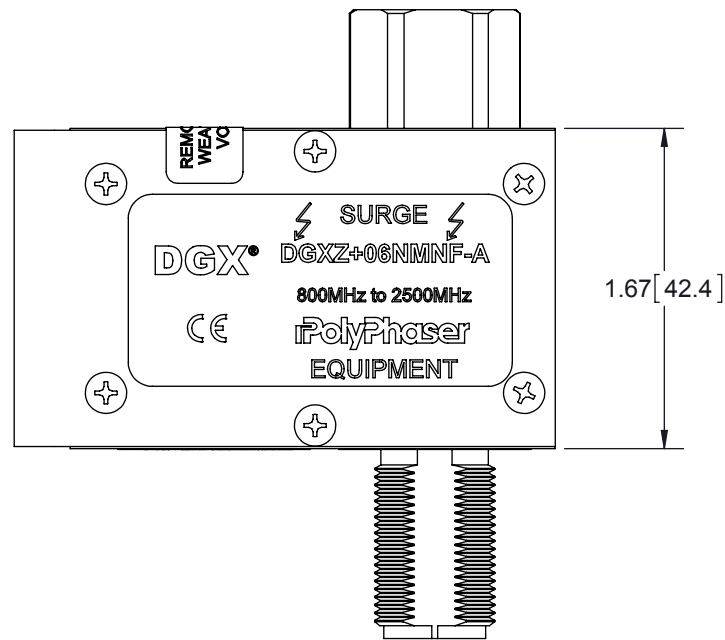
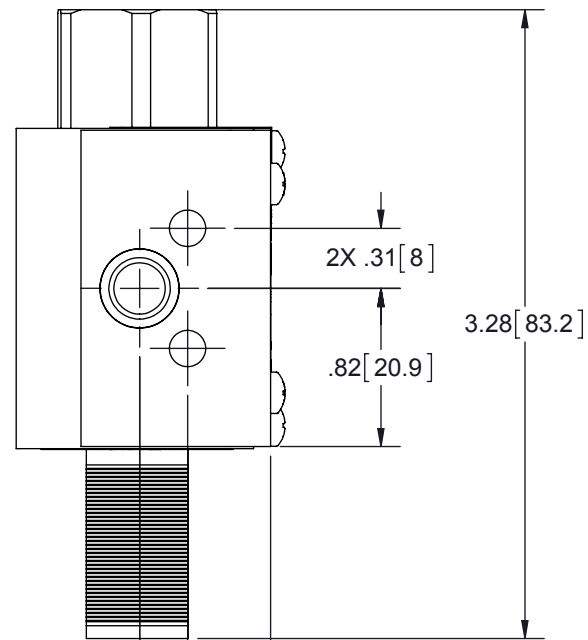


REVISIONS				
REV.	DESCRIPTION	ECN	DATE	APPROVED
M	REFER TO ECN	11974	8/29/13	KCB



MAXIMUM CHARACTERISTICS

Application:
 Used where DC voltage is required
 To power tower top electronics
 Ideal for GPS
 Weatherized Flange or Bulkhead Mount

Electrical Performance:

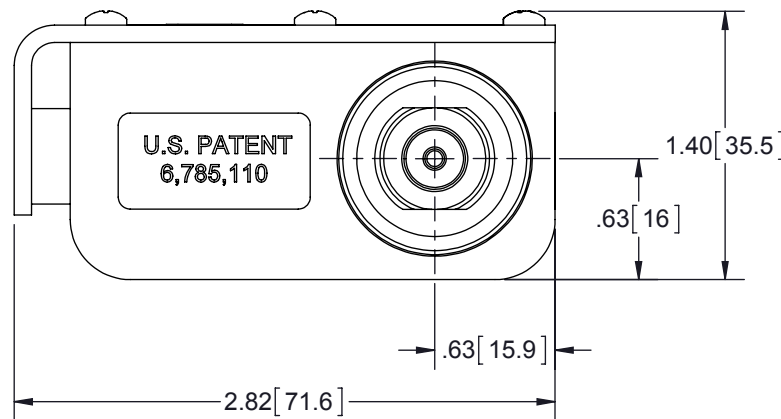
Frequency Range: 800MHz to 2500MHz
 VSWR: ≤1.1:1 Over Frequency Range
 Insertion Loss: ≤0.1dB Over Frequency Range
 Power: 300Wrms Average
 Turn On: ±6.5Vdc
 Turn On Time: 4ns For 2kV/ns
 Max Surge: 20kA IEC 61000-4-5 8/20µs Waveform
 Throughput Energy: ≤175µJ for 3kA @ 8/20µs Waveform
 User Voltage: ±6.0Vdc Max
 Usage Current: ≤4.0A Continuous

Mechanical:

Dimensions: 3.28" x 2.82" x 1.40"
 Weight: .5lbs

Environmental:

Compliant to IEC 60950-1 Section 7.4.2
 Meets IEC 60529 IP67
 Meets Bellcore #TA-NWT-000487
 Procedure 4.11, Wind Driven (120mph) Rain Intrusion Test.
 Operating temperature: -50°C to +85°C
 Relative Humidity: To 95%
 CE Compliant
 RoHS Compliant



HARDWARE KIT INCLUDES:

QTY	DESCRIPTION
1	NUT 5/8-24 303 HEX SS
1	WASHER 5/8 410 SS
1	SILICONE O-RING 019
1	SCREW CAP M8X1.25X10MM
1	WASHER 5/16 EXT 18-8 SS

CUSTOMER APPROVAL: _____ DATE: _____

ALL DIMENSIONS SHOWN ARE FOR REFERENCE ONLY.

THESE COMMODITIES, TECHNOLOGY OR SOFTWARE WERE EXPORTED FROM THE UNITED STATES IN ACCORDANCE WITH THE EXPORT ADMINISTRATION REGULATIONS. DIVERSION CONTRARY TO U.S. LAW PROHIBITED.

UNLESS OTHERWISE SPECIFIED LEADING DIMENSIONS ARE INCHES DIMENSIONS IN [] ARE MILLIMETERS		DRAWN	IB	DATE	04/08/02				
TOLERANCES: FRACTIONS=± 1/32 .XX± .03 ANGLES=± 1° .XXX± .010		ENG APPD	RD	05/06/02					
MATERIAL		PRODUCT MGR	KCB	04/29/02					
THIRD-ANGLE PROJECTION		MARKETING APPD	PH	05/02/02					
		PROJECT NO.							
TITLE						800MHz-2500MHz BROADBAND CUSTOMER SPECIFICATION			
SIZE	CAGE	PART NUMBER		REV		B	61114	DGXZ+06NMNF-A	M
SCALE	PROD CAT	DOCUMENT NAME		SHEET	OF	1:1	RFP	DGXZ+06NMNF-A-C	1 OF 1

NOTICE: THE INFORMATION AND DESIGN IN THIS DOCUMENT IS THE PROPERTY OF TRANSTECTOR SYSTEMS. ALL RIGHTS RESERVED.