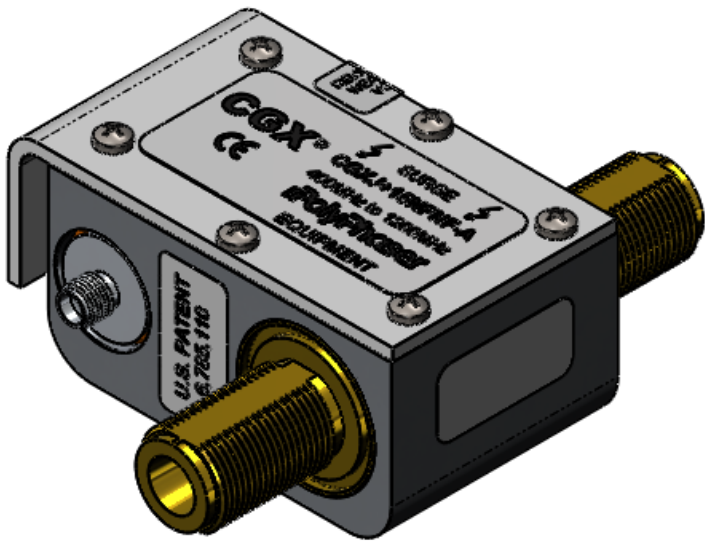
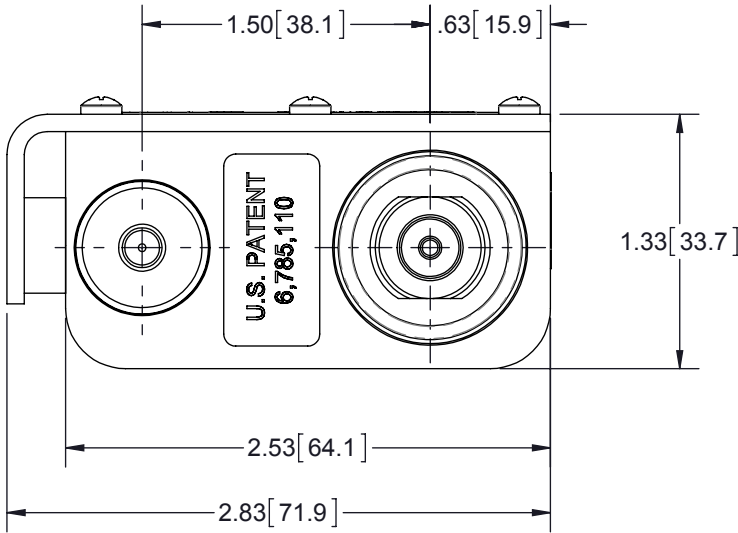
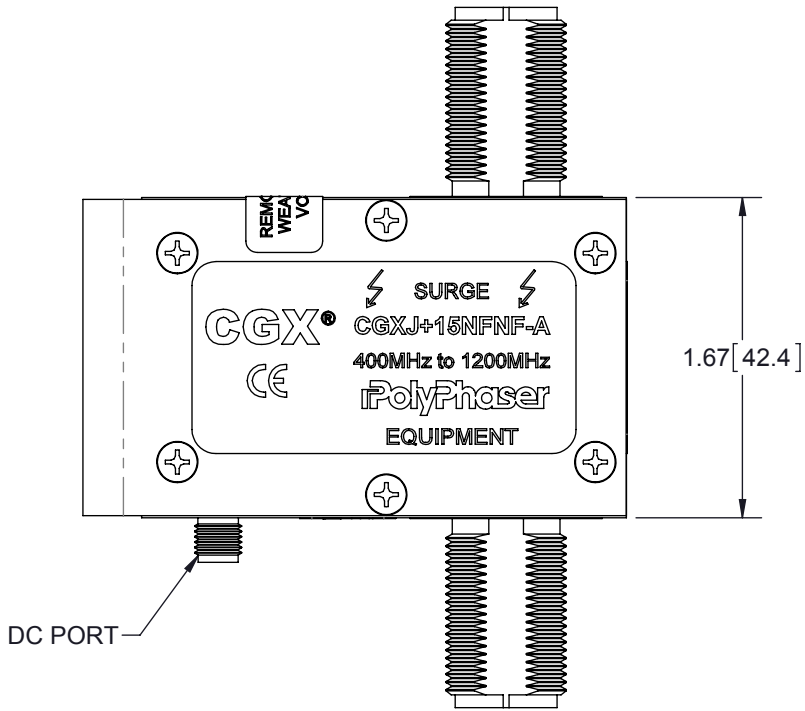
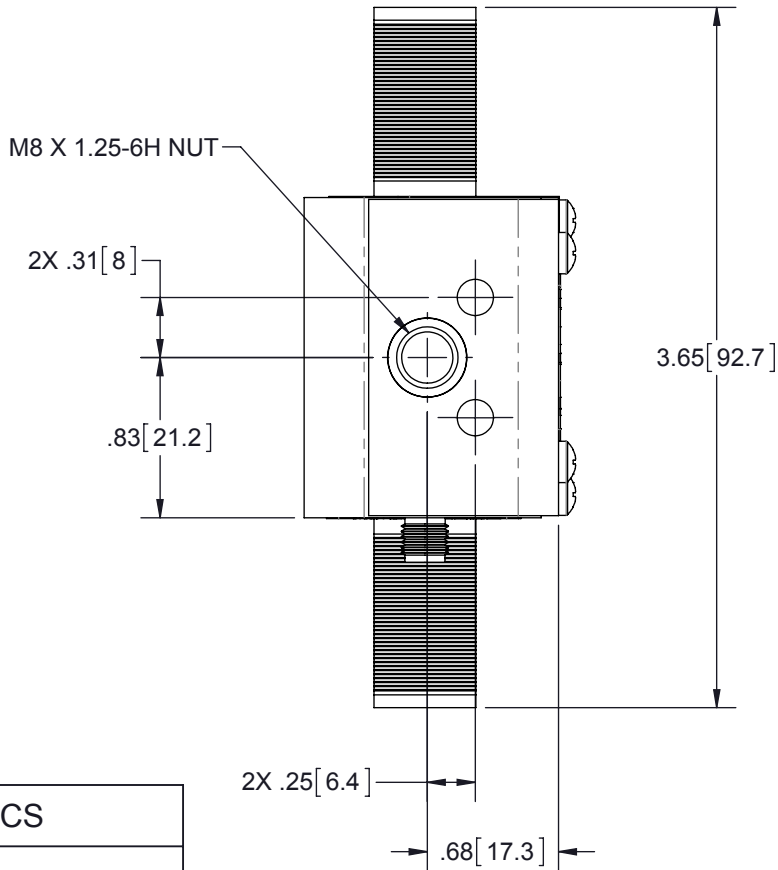


REVISIONS				
REV.	DESCRIPTION	ECN	DATE	APPROVED
B	REFER TO ECN	11197	12/5/12	CAP



MAXIMUM CHARACTERISTICS

APPLICATION:
WEATHERIZED, FLANGE OR BULKHEAD MOUNT
FREQUENCY RANGE:
400MHz TO 1200MHz
VSWR:
≤1.1:1 OVER FREQUENCY RANGE
INSERTION LOSS:
≤0.1dB OVER FREQUENCY RANGE
POWER:
300W RMS AVERAGE
TURN ON:
+20Vdc
TURN ON TIME:
4ns FOR 2kV/ns
SURGE:
20kA IEC 61000-4-5 8/20μs WAVEFORM
THROUGHPUT ENERGY:
<25μJ FOR 3kA, 8/20μs WAVEFORM
USER VOLTAGE:
+15Vdc MAX
USAGE CURRENT:
≤4.0A CONTINUOUS
VIBRATION:
1G AT 5Hz TO 100Hz
RELATIVE HUMIDITY:
TO 95%
ENVIRONMENTAL:
MEETS IEC 60529 IP67
MEETS BELLCORE #TA-NWT-000487
PROCEDURE 4.11, WIND DRIVEN (120MPH)
RAIN INTRUSION TEST.
TEMPERATURE:
-50°C TO +85°C STORAGE/OPERATING+85°C
SAFETY:
UL 497B LISTED

NOTE:
MATING CONNECTOR TORQUE:
N - 15-20 lbf-in
SMA - 3-5 lbf-in

THESE COMMODITIES, TECHNOLOGY OR
SOFTWARE WERE EXPORTED FROM THE
UNITED STATES IN ACCORDANCE WITH THE
EXPORT ADMINISTRATION REGULATIONS.
DIVERSION CONTRARY TO U.S. LAW PROHIBITED.

CUSTOMER APPROVAL: _____ DATE: _____

ALL DIMENSIONS SHOWN ARE FOR REFERENCE ONLY.

UNLESS OTHERWISE SPECIFIED LEADING DIMENSIONS ARE INCHES DIMENSIONS IN [] ARE MILLIMETERS		DRAWN RJS	DATE 2/15/06				
		ENG APPD RCD	2/16/06				
TOLERANCES: FRACTIONS=± 1/32 .XX=± .03 ANGLES=± 1 ° .XXX=± .010		PRODUCT MGR KCB	2/16/06	TITLE 400-1200MHz BROADBAND CUSTOMER SPECIFICATION			
		MARKETING APPD WO	2/16/06				
MATERIAL		PROJECT NO.		SIZE B	CAGE 61114	PART NUMBER CGXJ+15NFNF-A	REV B
		THIRD-ANGLE PROJECTION 		SCALE 1:1	PROD CAT RFP	DOCUMENT NAME CGXJ+15NFNF-A-C	SHEET 1 OF 1
		NOTICE: THE INFORMATION AND DESIGN IN THIS DOCUMENT IS THE PROPERTY OF TRANSECTOR SYSTEMS. ALL RIGHTS RESERVED.					