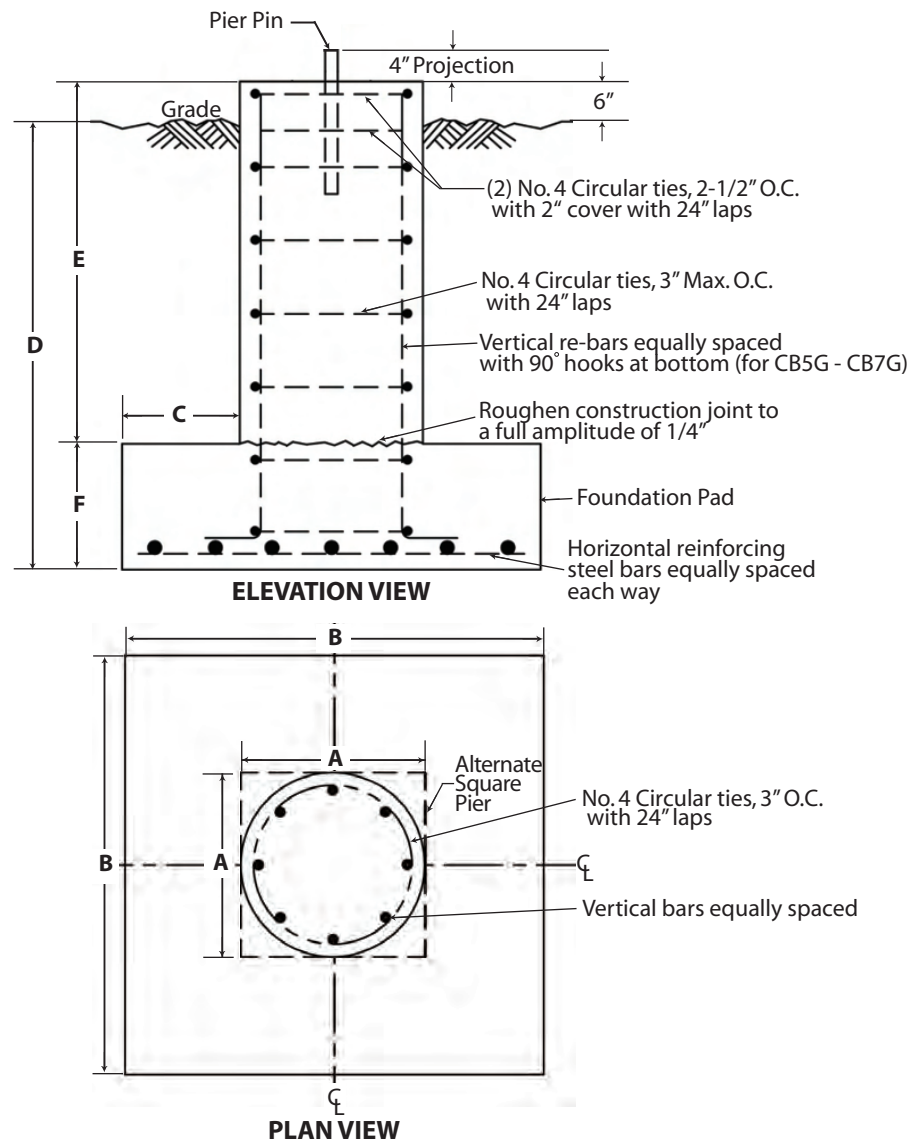




**ROHN 65G Guyed Tower  
Standard Base Pier Designs**



Base	A	B	C	D	E	F	Concrete Vol. (Cu. Yds.) Round Pier	Vertical Bars (No. & Size)	Horiz. Bars in Pad (No. & Size)
CB2G	3' - 0"	3' - 0"	N/A	4' - 0"	N/A	N/A	1.2	(10) #7	NONE
CB3G	3' - 6"	3' - 6"	N/A	4' - 0"	N/A	N/A	1.6	(12) #7	NONE
CB4G	4' - 0"	4' - 0"	N/A	4' - 0"	N/A	N/A	2.1	(12) #8	NONE
CB5G	2' - 0"	4' - 0"	1' - 0"	4' - 0"	3' - 3"	1' - 3"	1.1	(8) #6	(5) #5 (Total of 10)
CB6G	2' - 0"	4' - 6"	1' - 3"	4' - 0"	3' - 3"	1' - 3"	1.3	(8) #6	(6) #5 (Total of 12)
CB7G	2' - 0"	5' - 0"	1' - 6"	4' - 6"	3' - 9"	1' - 3"	1.6	(8) #6	(6) #5 (Total of 12)