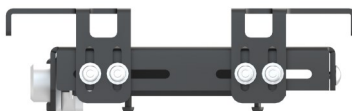
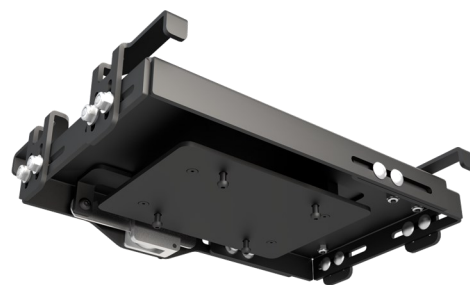




Top View



Side View



Bottom View

Feature	Benefit
Accommodates broad range of tablet computers and mounts	<ul style="list-style-type: none"> Cradle can be adapted to form-fit a wide variety of slate tablet models and sizes, including tablets with jackets or cases Easy-to-adjust and install on an assortment of PMT tablet mounts with universal interface plate (VESA 75mm x 75mm hole pattern) and fit kit
Aircraft-grade aluminum construction	<ul style="list-style-type: none"> Exclusively manufactured from aluminum for strength, structural integrity, vibration reduction and corrosion resistance Cradle has smooth surfaces, tapered edges and rounded corners for protection
Compact, rugged and durable design	<ul style="list-style-type: none"> Thin, small profile and rugged design. Finished in high quality black epoxy powder coat for durability
Safety assurance	<ul style="list-style-type: none"> Key lock system, combined with adjustable clamps (with foam padding for device protection), secures tablet in-place to prevent theft and ensures occupant safety and protection

Dimensions / Weight

Width: 9.375" to 10.75" (23.81 cm to 27.30 cm)

Depth: 6.25" to 8.5" (15.87 cm to 21.59 cm)

Height: .25" to 1.0" (.63 cm to 2.54 cm)

Weight : 2.65 lbs. (1.20 kg)



Optional fit kit is available: adds up to 2 extra inches to width (12.75" max)

Tablet Cradle Mounts



Flex Pedestal



Swivel Pedestal



Desk Stand



Dual-Link Mount



Dash Strap Mount

BaseLine Pedestal with VESA Tilt Mount and Dual Pivot Arm



Cantilever Arm with VESA Tilt Mount and Dual Pivot Arm

