

APPLICATION NOTES:

DC PASS
BULKHEAD MOUNT
REPLACEABLE TRANSIENT ELEMENTS
BIDIRECTIONAL OPERATION
WEATHER PROOF WHEN INSTALLED
50Ω IMPEDANCE

FREQUENCY RANGE:

698MHz TO 2.7GHz
dc TO 2.5MHz TELEMETRY (AISG)

MAX AVG. RF POWER:

500W @ 920MHz

INSERTION LOSS:

698MHz TO 2.6GHz, TYP. 0.1dB
2.6GHz TO 2.7GHz, TYP. 0.2dB
2.176 MHz @ MAX: 0.1dB

RETURN LOSS:

698MHz TO 750MHz, 23dB MAX
750MHz TO 2.7GHz, 25dB MAX
2.176 MHz @ MAX: -17dB

PIM 3rd ORDER:

TYP: -173dBc (-130dBm), 2x20W
MAX: -155dBc (-112dBm), 2x20W

MAX SURGE:

20kA IEC 61000-4-5 8/20μs WAVEFORM

THROUGHPUT ENERGY:

TYP. 1mJ FOR 2kA @ 8/20μs WAVEFORM

USER VOLTAGE:

±60Vdc (±80Vdc MAX)

DC CURRENT:

4A (6AMAX)

DC RESISTANCE:

≤0.02Ω (CENTER PIN + SHIELD RESISTANCE)

STORAGE/OPERATING TEMPERATURE:

-50°C TO +85°C

HUMIDITY:

≤95%, NON-CONDENSING, 100% EXTERNAL

MATERIAL:

BODY: TRI-METAL PLATED OVER BRASS
DIELECTRIC: PTFE
CENTER PINS: TRI-METAL PLATING OVER BRASS

ENVIRONMENTAL:

MEETS IEC 60529 IP67 WHEN CONNECTED
MEETS BELLCORE #TA-NWT-000487

PROCEDURE 4.11, WIND DRIVEN 120 MPH

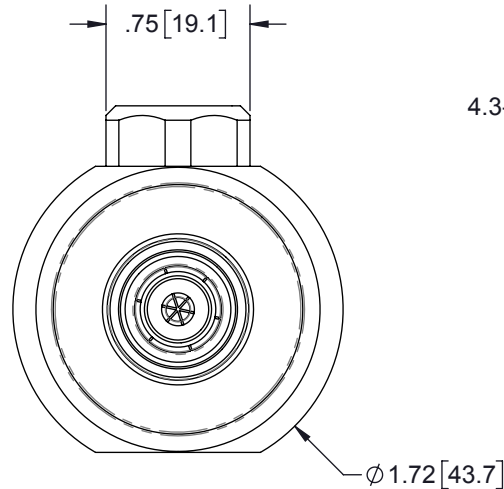
RAIN INTRUSION TEST

CE COMPLIANT

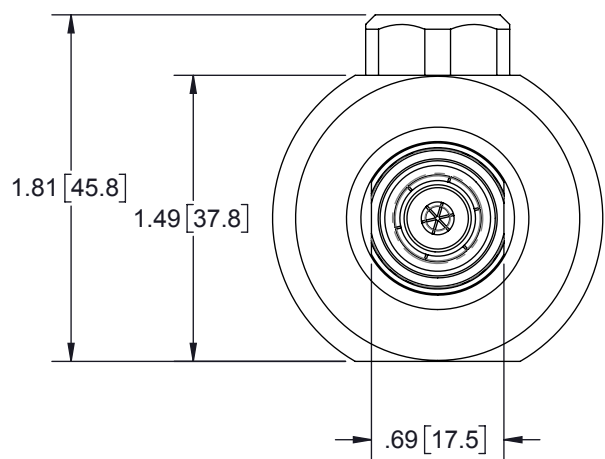
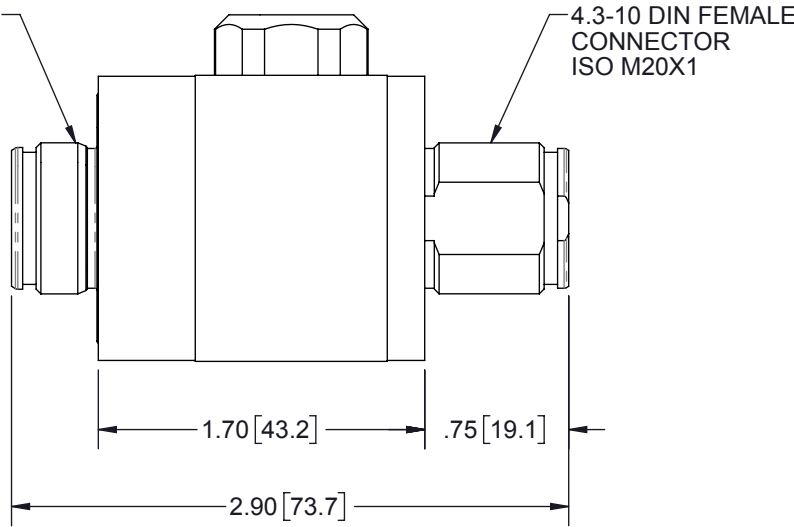
RoHS COMPLIANT

FOR GAS TUBE REPLACEMENTS ORDER P/N RGT-KIT-01

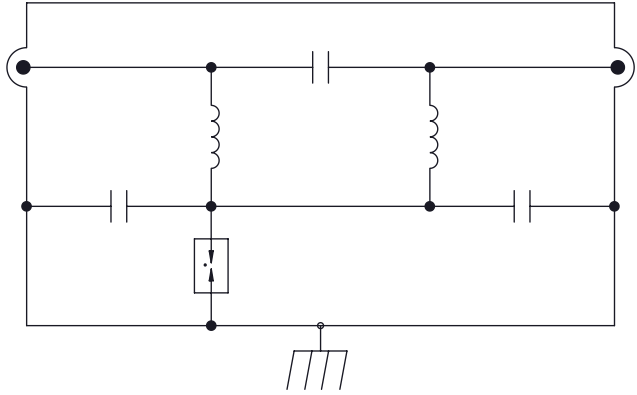
HARDWARE KIT CONTENTS:	
QTY	DESCRIPTION
1	NUT M20 X 1 SS
1	WASHER .82ID FLAT SS
1	SILICONE O-RING 019
1	RING TERM 6AWG .82ID



4.3-10 DIN FEMALE
CONNECTOR
ISO M20X1



SCHEMATIC BI-DIRECTIONAL


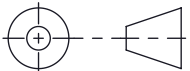


THESE COMMODITIES, TECHNOLOGY OR
SOFTWARE WERE EXPORTED FROM THE
UNITED STATES IN ACCORDANCE WITH THE
EXPORT ADMINISTRATION REGULATIONS.
DIVERSION CONTRARY TO U.S. LAW PROHIBITED.

REVISIONS				
REV.	DESCRIPTION	ECN	DATE	APPROVED
B	REFER TO ECN	14234	11/29/17	RJS

CUSTOMER APPROVAL: _____ DATE: _____

ALL DIMENSIONS SHOWN ARE FOR REFERENCE ONLY.

UNLESS OTHERWISE SPECIFIED LEADING DIMENSIONS ARE INCHES DIMENSIONS IN [] ARE MILLIMETERS		DRAWN	DPM	DATE	<div></div>							
		ENG APPD	EJD	05/25/2017								
		PRODUCT MGR	RC	5/25/2017								
		MARKETING APPD	LJ	7/28/2017								
TOLERANCES: FRACTIONS=± 1/32 .XX=± .03 ANGLES=± 1 ° .XXX=± .010		PROJECT NO.			TITLE SX-DC-PASS-4.3-10 FEMALE/FEMALE CUSTOMER SPECIFICATION							
MATERIAL NOTED												
THIRD-ANGLE PROJECTION 		NOTICE: THE INFORMATION AND DESIGN IN THIS DOCUMENT IS THE PROPERTY OF TRANSECTOR SYSTEMS. ALL RIGHTS RESERVED.			SIZE	CAGE	PART NUMBER		REV			
					B	30992	TSXDC-4310FF		B			
					SCALE	1:1	PROD CAT	RFP	DOCUMENT NAME	TSXDC-4310FF-C	SHEET	1 OF 1