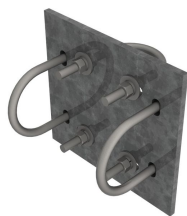


XP-2530



Crossover Plate, joins 2-7/8 in to 3-1/2 in OD round members

Product Classification

Product Type	Clamp plate
Mounting	Crossover plate
Tower Taper	Non-tapered Tapered

Dimensions

Height	76.2 mm 3 in
Width	254 mm 10 in
Length	254 mm 10 in
Mounting Diameter 2, maximum	88.9 mm 3.5 in
Mounting Diameter 2, minimum	73.66 mm 2.9 in
Mounting Diameter, maximum	73.66 mm 2.9 in
Mounting Diameter, minimum	88.9 mm 3.5 in

Material Specifications

Material Type	Hot dip galvanized steel
---------------	--------------------------

Packaging and Weights

Included	Plates U-bolts
Packaging quantity	1
Weight, net	5 kg 11.023 lb

Regulatory Compliance/Certifications

Agency	Classification
--------	----------------

XP-2530

CHINA-ROHS

Below maximum concentration value

REACH-SVHC

Compliant as per SVHC revision on www.commscope.com/ProductCompliance

ROHS

Compliant

