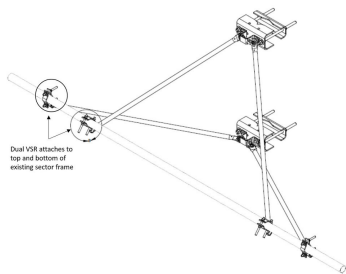


# VSRDUAL-TS-B-HD



Heavy Duty Dual V-Stabilizer™ for a Tower, small leg size (2–8 in)

## Product Classification

**Product Type** Reinforcement kit

## General Specifications

**Mounting** Angle 60°, 203.2 mm (8 in) | Angle 90°, 152.4 mm (6 in) | Straight or tapered legs up to 203.2 mm (8 in) OD

**Pipe, quantity** 0

**Tower Taper** Non-tapered | Tapered

## Dimensions

**Height** 965.2 mm | 38 in

**Length** 1,320.8 mm | 52 in

**Mounting Diameter, maximum** 203.2 mm | 8 in

**Mounting Diameter, minimum** 50.8 mm | 2 in

## Material Specifications

**Material Type** Hot dip galvanized steel

## Packaging and Weights

**Included** Clamps | Legs

**Packaging quantity** 2

**Weight, net** 67.313 kg | 148.4 lb

## Regulatory Compliance/Certifications

Agency	Classification
ISO 9001:2015	Designed, manufactured and/or distributed under this quality management system

# VSRDUAL-TS-B-HD

---

