



C10152239 10' T-BOOM ASSEMBLY (3' STANDOFF)

(1)	CK00101	3' STANDOFF KIT	124
(1)	CK00105	10' FRONT FACE KIT	107
(1)		MISCELLANEOUS MATERIAL	176
TOTAL WEIGHT			407

CK00101 KIT LIST OF MATERIAL (3' STANDOFF)

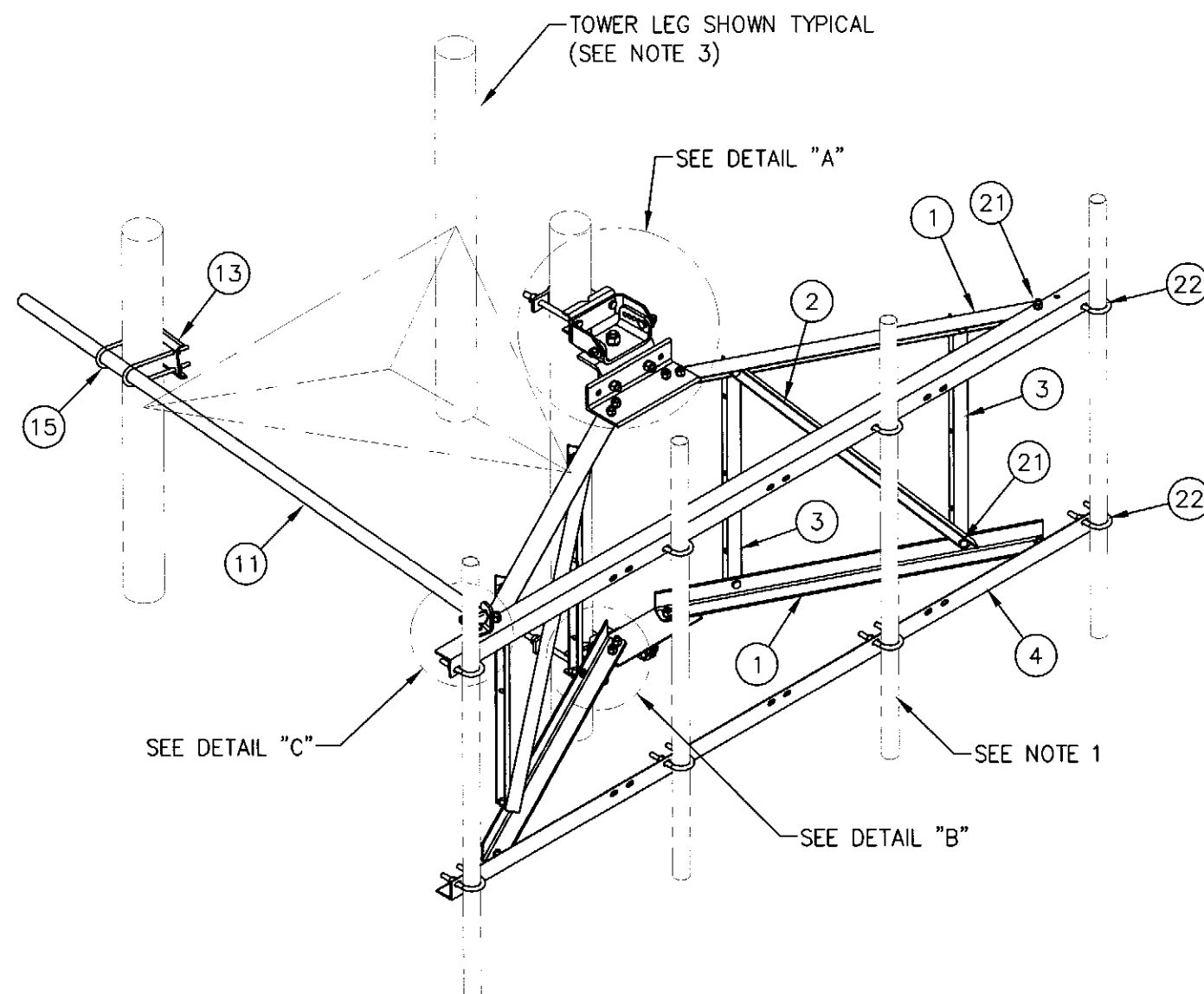
ITEM	QTY.	PART NO.	DESCRIPTION	WEIGHT
1.	4	CS01355	ANGLE, CHORD	71
2.	2	CS01357	ANGLE, DIAGONAL	21
3.	4	CS01358	ANGLE, VERTICAL	32
TOTAL WEIGHT				124

CK00105 KIT LIST OF MATERIAL (10' FRONT FACE)

ITEM	QTY.	PART NO.	DESCRIPTION	WEIGHT
4.	2	CS01351	ANGLE, 10' FRONT FACE	107
TOTAL WEIGHT				107

LIST OF MISCELLANEOUS MATERIAL

ITEM	QTY.	PART NO.	DESCRIPTION	WEIGHT
5.	2	CS01476	ANGLE, MOUNTING BRACKET	33
6.	2	CS01906	PLATE, T-BOOM ADAPTER	23
7.	2	CS01565	PLATE, T-BOOM CONNECTION	17
8.	1	CS01907	PLATE, T-BOOM CONNECTION	11
9.	1	CS01908	PLATE, T-BOOM CONNECTION	10
10.	2	CS01361	PLATE, 2 HOLE ADAPTER CLAMP	5
11.	1	CS01910	PIPE, TIEBACK	23
12.	1	CS00098	PLATE, BENT SWIVEL	3
13.	1	CS01909	PLATE, TIEBACK SUPPORT	4
14.	2	CS01998	PLATE, MOUNTING BRACKET	6
15.	2	C40034081	U-BOLT ASSEMBLY, 1/2" X 2 9/16" C-C GALV	3
16.	2	C40026072	BOLT ASSEMBLY, 1" X 2 3/4" A325	3
17.	4	C40140005	BOLT ASSEMBLY, 3/4" X 10" A307 W/NUT, LKW, FLW	7
18.	4	C40026044	BOLT ASSEMBLY, 3/4" X 2 1/4" A325	3
19.	1	C40026033	BOLT ASSEMBLY, 5/8" X 4 1/2" A325	1
20.	4	C40026024	BOLT ASSEMBLY, 5/8" X 2 1/4" A325	2
21.	21	C40026022	BOLT ASSEMBLY, 5/8" X 1 3/4" A325	9
22.	8	C40034023	U-BOLT ASSEMBLY, 5/8" X 3 1/16" C-C	13
TOTAL WEIGHT				176



ISOMETRIC VIEW

NOTES:

- 2 3/8" O.D. MOUNTING PIPES MUST BE PURCHASED SEPARATELY.
- QUANTITIES SHOWN IN LISTS OF MATERIAL ARE FOR ONE (1) T-BOOM ONLY.
- THIS T-BOOM WILL MOUNT TO THE FOLLOWING:
- 1 1/2" TO 5 9/16" ROUND LEG

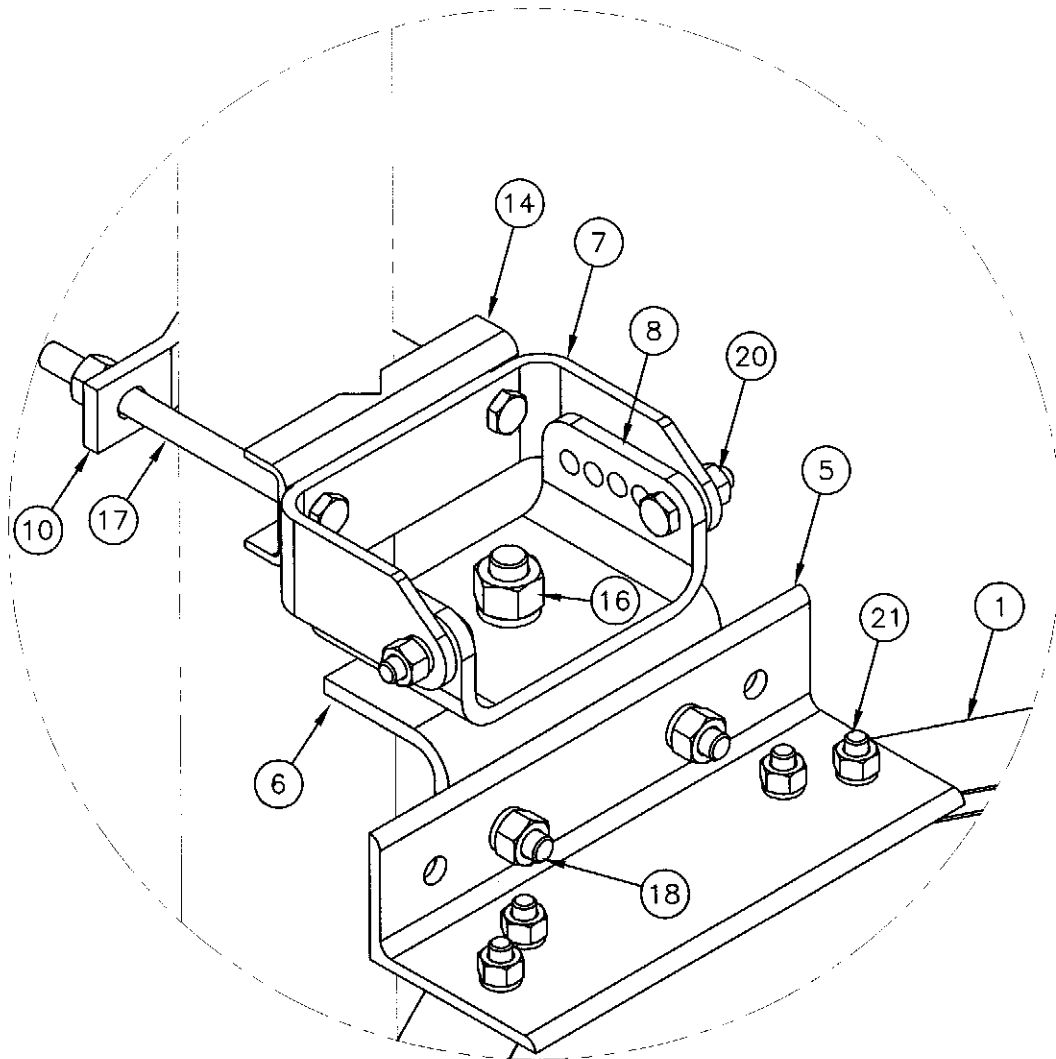
UNLESS OTHERWISE SPECIFIED ALL DIMENSIONS INCLUDE FINISHES AND ARE IN INCHES		MATERIAL:	
TOLERANCES: FRACTIONS $\pm 1/16"$ ANGLES $\pm 1/2$ DEG. DECIMALS $\pm .010"$		TOLERANCES DO NOT APPLY TO RAW MATERIAL	
2	2/8/10	WMN	WMN
1	4/27/09	MLC	MC
REV	DATE	DRW	CHK



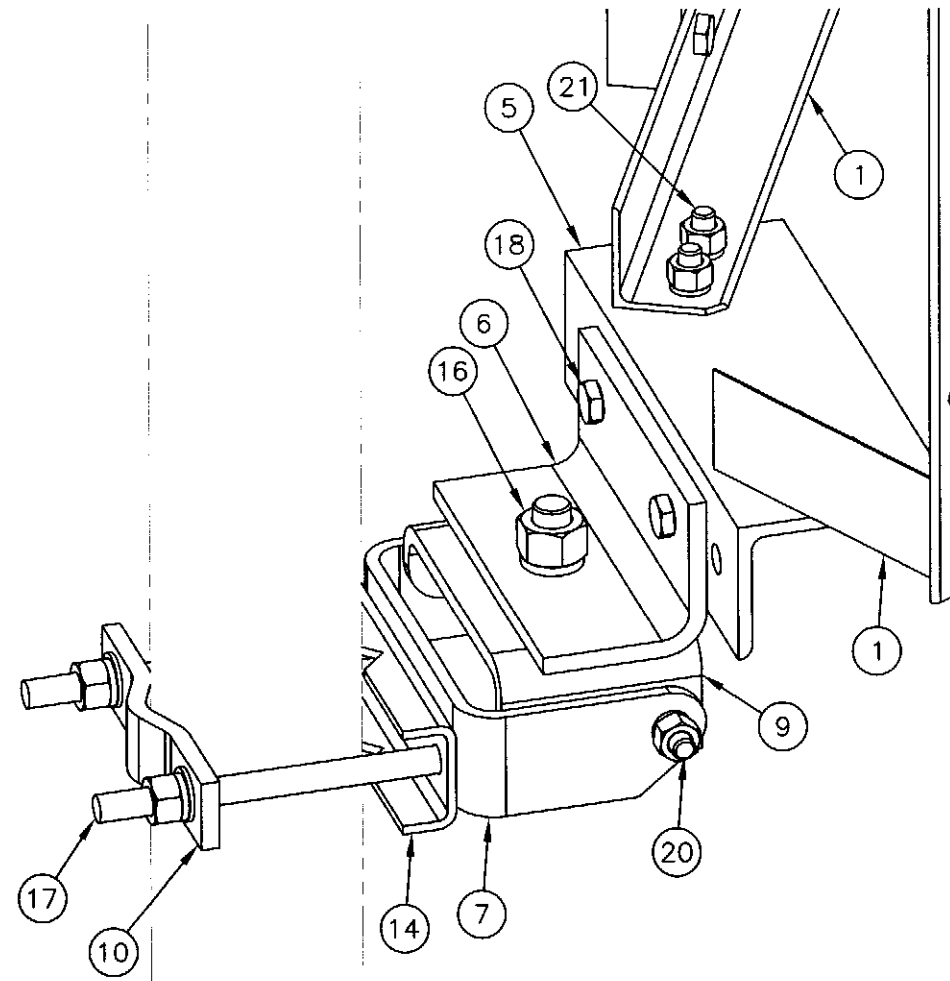
CONFIDENTIAL
This document and the information
contained herein is the confidential trade
secret property of Sabre Communications
Corporation ("Sabre") and must not be
reproduced, copied or used, in whole or in
part, for any purpose without the prior
written consent of Sabre.
© 2009 Sabre Communications Corporation.
All rights reserved.

10' T-BOOM ASSEMBLY W/TIEBACK (3' STANDOFF) ANTENNA MOUNTING PIPE HARDWARE W/NO ANTENNA MOUNTING PIPES

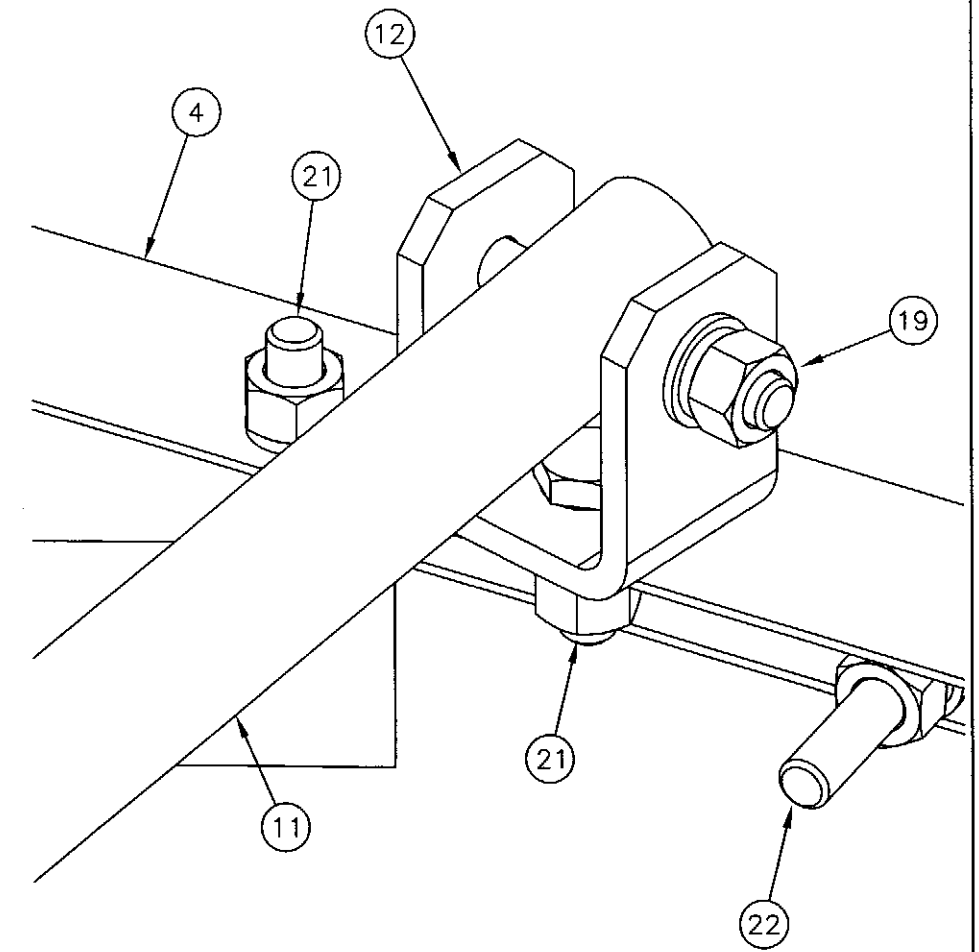
DATE	2/2/09	SIZE	B	DRAWING NO.	C10152239	REV	2
DRAWN BY	MLC	SCALE		None		PAGE	
CHECKED BY	MC					1 OF 2	




DETAIL "A"



DETAIL "B"



DETAIL "C"

UNLESS OTHERWISE SPECIFIED ALL DIMENSIONS INCLUDE FINISHES AND ARE IN INCHES				MATERIAL:			10' T-BOOM ASSEMBLY W/TIEBACK (3' STANDOFF) ANTENNA MOUNTING PIPE HARDWARE W/NO ANTENNA MOUNTING PIPES						
TOLERANCES: FRACTIONS ± 1/16" ANGLES ± 1/2 DEG. DECIMALS ± .010"				TOLERANCES DO NOT APPLY TO RAW MATERIAL									
<div>CONFIDENTIAL</div> <p>This document and the information contained herein is the confidential trade secret property of Sabre Communications Corporation ("Sabre") and must not be reproduced, copied or used, in whole or in part, for any purpose without the prior written consent of Sabre.</p> <p>© 2009 Sabre Communications Corporation. All rights reserved.</p>						DATE		2/2/09	SIZE B	DRAWING NO. C10152239		REV 2	
						DRAWN BY		MLC		SCALE None		PAGE 2 OF 2	
						CHECKED BY		MC					
						REV		DATE		DRW/CHK		DESCRIPTION	