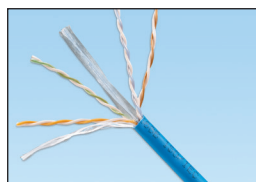


## Copper Cable



**PUL6AM04WH-CEG**



**PUL6004BUY**

Part Number	Description	UOM	MOQ
<b>Unshielded</b>			
<b>PUC5504IGY</b>	Category 5e cable, 4-pair, 24 AWG, UTP, CM, International Gray.	Roll	18
<b>PUC6004BUY</b>	Enhanced Category 6 cable, 4-pair, 23 AWG UTP, CM, Blue.	Roll	18
<b>PUC6004IGY</b>	Enhanced Category 6 cable, 4-pair, 23 AWG, CM, International Gray.	Roll	18
<b>PUR6004BUY</b>	Enhanced Category 6 cable, 4-pair, 23 AWG UTP, CMR, Blue.	Roll	27
<b>PUR6AM04BU-CG</b>	Category 6A cable, 4-pair, 23 AWG, UTP, CMR, Blue.	Roll	20
<b>PUR6ASD04BU-CG</b>	Category 6A (SD) cable, 4-pair, 26 AWG, UTP, CMR, Blue.	Roll	18
<b>Shielded</b>			
<b>PFL6X04WH-CEG</b>	Category 6A cable, 4-pair, 23 AWG, F/UTP, LSZH, White.	Roll	18
<b>Outside Plant Cable</b>			
<b>PUO6C04BL-U</b>	Category 6 outside plant cable, 4-pair, 23 AWG, UTP, Black.	Foot	9000

Note: F/UTP means Foil around Unshielded Twisted Pairs = shielded cable.  
LSZH means Low Smoke Zero Halogen.

## RJ45 Jack Module



**CJ6X88TGBL**



**CJS688TGY**

Part Number	Description	Std. Pkg. Qty.	Std. Ctn. Qty.
<b>Unshielded</b>			
<b>CJ6X88TGBL</b>	Category 6A RJ45 UTP Mini-Com™ Jack, Black.	1	50
<b>CJ6X88TGBU</b>	Category 6A RJ45 UTP Mini-Com™ Jack, Blue.	1	50
<b>CJ6X88TGIW</b>	Category 6A RJ45 UTP Mini-Com™ Jack, International White.	1	50
<b>CJ6X88TGWH</b>	Category 6A RJ45 UTP Mini-Com™ Jack, White.	1	50
<b>CJ688TGBL</b>	Category 6 RJ45 UTP Mini-Com™ Jack, Black.	1	50
<b>CJ688TGBU</b>	Category 6 RJ45 UTP Mini-Com™ Jack, Blue.	1	50
<b>CJ688TGIW</b>	Category 6 RJ45 UTP Mini-Com™ Jack, International White.	1	50
<b>CJ688TGWH</b>	Category 6 RJ45 UTP Mini-Com™ Jack, White.	1	50
<b>CJ5E88TGBL</b>	Category 5E RJ45 UTP Mini-Com™ Jack, Black.	1	50
<b>CJ5E88TGBU</b>	Category 5E RJ45 UTP Mini-Com™ Jack, Blue.	1	50
<b>CJ5E88TGIW</b>	Category 5E RJ45 UTP Mini-Com™ Jack, International White.	1	50
<b>CJ5E88TGWH</b>	Category 5E RJ45 UTP Mini-Com™ Jack, White.	1	50
<b>Shielded</b>			
<b>CJS6X88TGY</b>	Category 6A RJ45 shielded Mini-Com™ Jack, Black.	1	50

Contact Panduit Customer Service for other colours and bulk packs.  
Category 6A and Category 6 jack modules are also available in Red (RD): CJ6X88TGRD and CJ688TGRD.