

SD214-HF2P4LDF(D00S) 4 dipole, 7.5 dBd, low PIM, offset, side mount, HD, 138-174 MHz

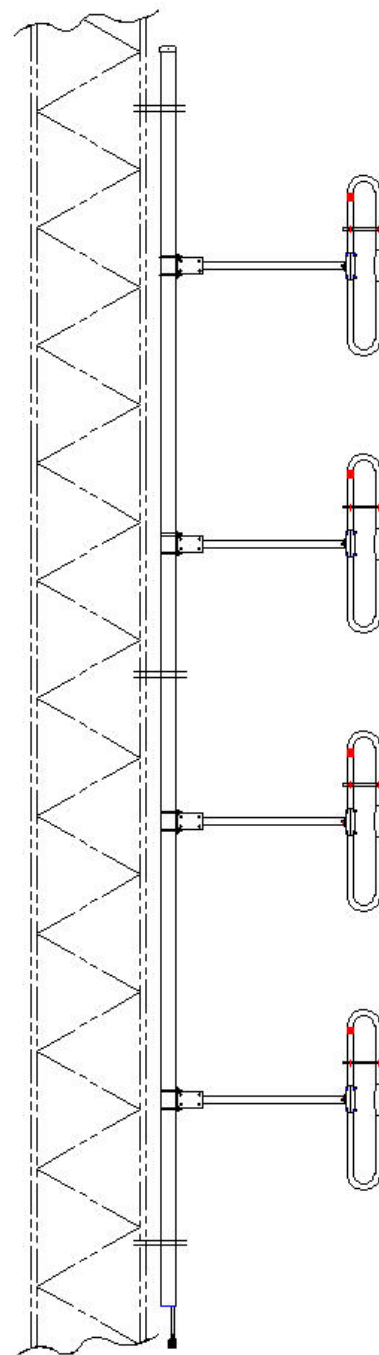
- 4-bay dipole antenna with industry-leading -150dBc PIM rating
- 7.5 dBd gain
- Side mount, heavy duty, low PIM
- 300W power rating

**Recommend SMK-435-A3-T5 or SMK-435-A7-T5 for Offset Side Mount.
Available from Sinclair separately.**

The SD214-HL series is a heavy duty, low intermod, extremely rugged 4-bay exposed dipole antenna designed for applications where moderate gain is required. These premium-quality antennas are well suited to public safety applications.

The design of these antennas provides for coverage between 118 to 225 MHz in 3 sub bands, 118-138 MHz for civil aviation applications, 138-174 MHz for private mobile networks, public safety and public security and 220-225 MHz for transportation networks.

The SD214-HL is also a high-performance low PIM dipole antenna which uses industry-leading designs that offer high gain, excellent bandwidth and high reliability. The standard connector offered is 7/16 DIN female.



Region	United States	Europe, Middle East and Africa	Caribbean and Latin America	Canada and rest of the world
Telephone	USA: 1 800 263 3275	International: +44 (0) 1487 84 28 19	International: +1 905 726 7676	Canada: 1 800 263 3275 International: +1 905 727 0165
E-mail	salesusa@sinctech.com	salesuk@sinctech.com	salesla@sinctech.com	salescan@sinctech.com

Electrical Specifications

Frequency Range	MHz	138 to 174	
Bandwidth	MHz	36	
Connector		7/16 DIN-Female	
Gain (nominal)	dBi (dBd)	9.6 (7.5)	
Input VSWR (max)		1.5:1	
Polarization		vertical	
Impedance	Ω	50	
Pattern		Offset	
Horizontal beamwidth (typ)	degrees	180	*1
Vertical beamwidth (typ)	degrees	18	
Average Power Input (max)	W	300	
Passive intermod. (2x20W, 3rd ord.)	dBc	-150	
Lightning protection		DC ground	
Electrical tilt (available)		0,2,4,6, or 8 degrees	

Notes

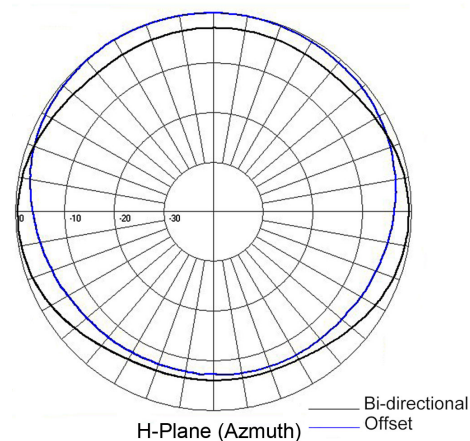
- *1 : Typical
- *2 : Qty 3

Mechanical Specifications

Width	mm (in)	655 (25.8)	
Depth	mm (in)	147 (5.8)	
Length/ Height	mm (in)	6096 (240)	
Base pipe diameter	mm (in)	73 (2.88)	
Base pipe mounting length	mm (in)	4572 (180)	
Radiating element material		aluminum	
Base pipe material		aluminum	
Weight	kg (lbs)	35.87 (79)	
Weight iced (1/2" ice)	kg (lbs)	71.28 (157)	
Mounting Hardware (Optional)		Clamp147	*2
Recommended For Offset Side Mount:		SMK-435-A3-T5 or SMK-435-A7-T5	
Mounting configurations		side mount	
Actual shipping weight	kg (lbs)	49.94 (110)	
Shipping dimensions	mm (in)	6248x737x165 (246x29x6.5)	

Ordering Information

Clamps must be ordered separately



Environmental Specifications

Temperature range	°C (°F)	-40 to +60 (-40 to +140)
Wind Loading Area (Flat Plate Equivalent)	m ² (ft ²)	0.47 (5.1)
Wind Loading Area (1/2" ice)	m ² (ft ²)	0.73 (7.9)
Rated wind velocity (no ice)	km/h (mph)	330 (205)
Rated wind velocity (1/2" radial ice)	km/h (mph)	266 (165)
Lateral Thrust (100 mph No Ice)	N (lbs)	822.9 (185)
Torsional moment (100 mph No Ice)	Nm (ft-lbs)	122.9 (91)

Region	United States	Europe, Middle East and Africa	Caribbean and Latin America	Canada and rest of the world
Telephone	USA: 1 800 263 3275	International: +44 (0) 1487 84 28 19	International: +1 905 726 7676	Canada: 1 800 263 3275 International: +1 905 727 0165
E-mail	salesusa@sinctech.com	salesuk@sinctech.com	salesla@sinctech.com	salescan@sinctech.com