



**PCTEL® – TEST AND MEASUREMENT**

# Public Safety Testing Solution

Efficiently verify public safety network coverage



## Concerned if First Responders can communicate during emergencies?

- Verify network coverage and signal quality before an emergency occurs
- Enforce standards for new or existing buildings

## Conducting tests to meet building code?

- Automatically test to code requirements
- Streamline the building approval process

## In-Building Grid Test Tool Features

- Real-time pass/fail results and printable reports
- Conforms with codes including NFPA 1221 and IFC 510 (2018)
- Simultaneously tests multiple channels, bands, and technologies
- Tests signal quality (optional features)
  - P25 Decode: SINR, BER, Frame BER, Network ID
  - Cellular Decode: LTE/FirstNet, UMTS/WCDMA
- Custom Channel Power RSSI Measurements for TETRA, DMR, EDACS, analog LMR, P25, and other technologies
- Supports any Public Safety, LTE, and UMTS/WCDMA bands



*PCTEL's IBflex® scanning receiver and SeeHawk® Touch software combine to support indoor/outdoor public safety testing*

# PUBLIC SAFETY TESTING SOLUTION

Tired of using complicated testing tools, lugging heavy equipment and hand recording scan results on grid paper just to apply for an occupancy permit? Now there's a better way to easily test indoor network coverage.

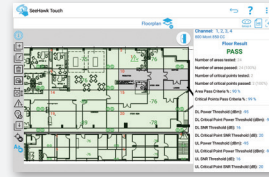
PCTEL's automated grid-based testing solution streamlines the way engineers and inspectors test public safety network coverage indoors.

## OUR PUBLIC SAFETY SOLUTION CONSISTS OF:

- SeeHawk Touch data collection software with Indoor Walk and Grid Test modes, plus Signal Analyzer
- SAMSUNG Android™ tablet
- IBflex® scanning receiver measures channel power (RSSI) for radio technologies across all public safety bands (140-990 MHz) and cellular bands (10-3800 MHz). Optional: P25 and cellular signal decode.
- Accessories: IBflex battery pack with 2 batteries, charger, backpack, 2 indoor antennas, data cable, and carrying case

Contact your sales representative to schedule a demo today.

## MULTIPLE APPLICATIONS INTEGRATED IN ONE TOOL



Grid test tool for public safety indoor coverage requirement



DAS/Small Cell walk test

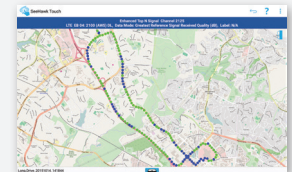


Integrated spectrum analysis

### Optional Add-Ons



DAS/Small Cell activities antenna verification

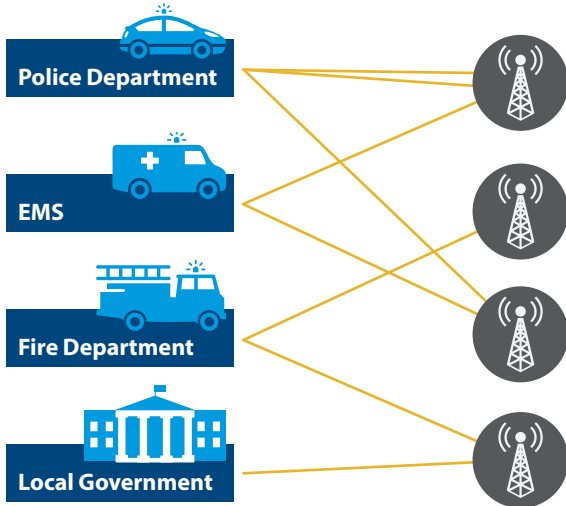


Outdoor drive test

## PUBLIC SAFETY COMMUNICATIONS NETWORKS

### OUTDOOR COVERAGE

(P25, LTE, TETRA, etc.)

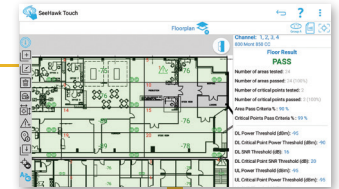


### INDOOR COVERAGE AND SIGNAL QUALITY

Commercial building or High-occupancy residence

- Coverage: downlink power for all technologies/bands
- Quality (optional): P25, LTE/FirstNet, UMTS

### Real-time results per floor



### BENEFITS FOR SUMMARY REPORT INCLUDE:

- Pre-configured reporting as specified by NFPA and IFC standards
- Report provides Pass/Fail results automatically by Channel and Grid in a Word document
  - Each floor has a report with the floor plan view
  - Building Report summarizes results over all floors, for single channel or all channels
  - Full set of results saved on Excel compatible file

### Building result file generated automatically

Building Result				
<b>PASS</b>				
Number of floors tested:	36	Area Pass Criteria %:	95 %	
Number of areas tested:	1335	Critical Points Pass Criteria %:	99 %	
Number of critical points tested:	0	Result Calculation:	By total areas	
CHANNELS RESULT		FLOORS RESULT		
Channel	Band	Result	# Of Areas Passed	# Of Critical Points Passed
700	EB 02: 1900 (PCS) DL	Pass	1335/1335 (100%)	0/0 (0%)

© 2019 PCTEL, Inc. All Rights Reserved. Product prices, materials and specifications are subject to change without notice. SeeHawk Touch software is available alone or on a tablet. Android is a trademark of Google Inc. All others are registered marks of their rightful owners.

610113-0619