

D090CCSG

90° Rigid Twist for WR90, 8.2–12.4 GHz, with interface types CPR90G and CPR90G, 8 in, gray

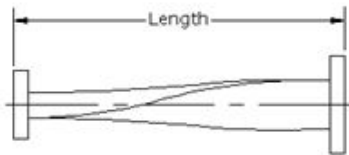
Electrical Specifications

Operating Frequency Band 8.2 – 12.4 GHz
VSWR 1.06

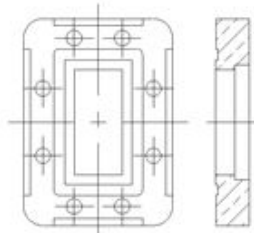
General Specifications

Component	90° Rigid Twist
Waveguide Size	WR90 WG16 R100
Finish	Gray
Interface	CPR90G
Interface 2	CPR90G
Length	203 mm 8 in

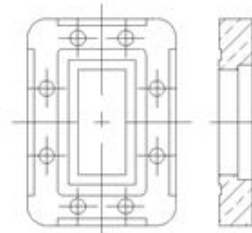
Component



Interface



Interface 2



Regulatory Compliance/Certifications

Agency	Classification
ISO 9001:2008	Designed, manufactured and/or distributed under this quality management system