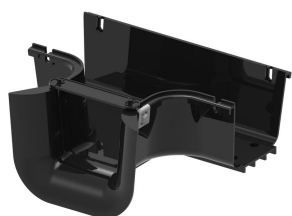


FGSB-MTRM-A



FiberGuide® Trumpet Flare used on 4 x 4 and 4 x 6 Downspouts, black

- FiberGuide products are designed and manufactured to ensure total off-frame fiber cable protection
- FiberGuide maintains a minimum bend radius throughout the entire system, regardless the system size
- FiberGuide is an optical raceway system for central office, mobile switching center and data center applications
- Engineers and installers can benefit from the large suite of available FiberGuide design tools

Product Classification

Regional Availability	Asia Australia/New Zealand EMEA Latin America North America
Portfolio	CommScope®
Product Type	Fiber raceway accessory
Product Brand	FiberGuide®
Product Series	FGS

General Specifications

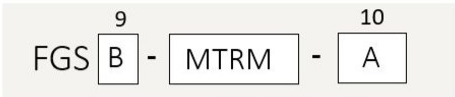
Color	Black
Section Type	Trumpet flare

Dimensions

System Dimensions	102 mm x 102 mm (4 in x 4 in)
-------------------	-------------------------------

Ordering Tree

FGSB-MTRM-A



Section Color		
9	empty	yellow
	B	black

Section Size		
10	2B	4 x 6 in, for dual downspout
	2B-IMP	4 x 6 in, for dual downspout with divider
	A	4 x 4 in
	B	4 x 6 in
	C	2 x 2 in
	D	4 x 4 in, entrance
	DS	2 x 4 in, entrance
	E	2 x 4 in, vertical
	F	4 x 12 in
	G	2 x 6 in
	H	4 x 24 in

Material Specifications

Material Type Engineering Thermoplastic

Environmental Specifications

Flammability Rating CSA S143 | UL 2024 | UL 94 V-0

Halogen Characteristics Blue Angel | TCO '99 | WEEE

Safety Standard CSA | UL

Regulatory Compliance/Certifications

Agency	Classification
CHINA-ROHS	Below maximum concentration value
REACH-SVHC	Compliant as per SVHC revision on www.commscope.com/ProductCompliance
ROHS	Compliant

