

- ◆ Integrates Commercial Wireless Bands
- ◆ 50 dB Input Isolation
- ◆ 250 W/port Avg. Power
- ◆ Guaranteed Low PIM
- ◆ IP67 Rated
- ◆ Minimal RF Insertion Loss
- ◆ Rugged, High Reliability
- ◆ RoHS compliant
- ◆ N-type and 4.3-10 Connectors



BK-201E



Model Numbers Indoor	Connectors (female)	Wt. nom. lb (kg)
BK-201E	4.3-10	2.95 (1.3)
BK-201N	N	2.95 (1.3)

Microlab BK-201 series diplexer allows combination and separation of the signals in 617 - 960 MHz and the 1695 - 2700 wireless bands. To minimize band inter-reaction, the inputs are well isolated and have minimal insertion loss over their respective frequency bands. Attention to mechanical design ensures guaranteed low passive intermodulation.

The Diplexer has been designed to ensure minimal loss and very high reliability at input powers up to 250W per input.

Frequency Bands:

Port 1 - Port 3: 617 to 960 MHz
Port 2 - Port 3: 1,695 to 2,700 MHz

P1:P2 Isolation: >50 dB in band

VSWR, all ports: 1.25:1 max.

DC Pass: All ports, 1A max.

Group Delay: 3 ns max.

Passband Loss: <0.15 dB (617 - 960 MHz)

<0.25 dB (1695 - 2700 MHz)

Input Power: 250W/input avg., 3 kW peak

Impedance: 50Ω nominal

PIM: -161 dBc (-118 dBm)
with 2 x +43dBm (20W) tones

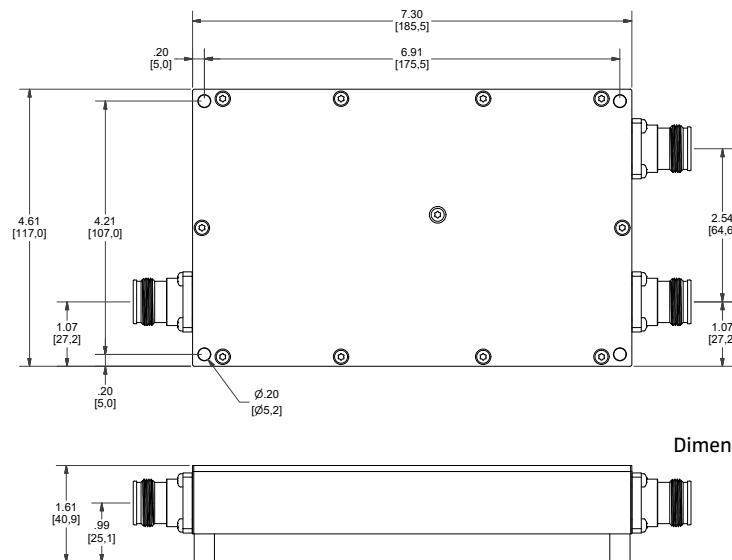
Environment: -35 to +55°C, IP67

Dimensions: 117 x 175.5 x 40.9 mm

Finish: Connectors: Triplate

Housing: Passivated Al.

Outline



Note: Specifications are subject to change without prior notification.

29MAR2020