



RAZ52211DM (Black)



RAZ52212DM (White)

### Features:

- 2x LTE 644-2700MHz (MiMo)
- 0, 1x, 2x or 3x WiFi 2.4/5GHz
- DSRC
- GNSS Active:
  - Beidou, GPS, Glonass
  - RHCP polarization
  - Amplifier Gain 30dBi
- Size: 88.5 x 195.1 x 92.6mm  
3.48 x 7.68 x 3.65 in
- Power withstanding 45W
- Available Models
  - RAZ32011DM = 3 Cable, Black
  - RAZ32012DM = 3 Cable, White
  - RAZ42111DM = 4 Cable, Black
  - RAZ42112DM = 4 Cable, White
  - RAZ52211DM = 5 Cable, Black
  - RAZ52212DM = 5 Cable, White
  - RAZ62311DM = 6 Cable, Black
  - RAZ62312DM = 6 Cable, White

### Applications:

- Vehicular use Telematics
- Fleet management
- Trucking
- Navigation, GIS and survey
- Public safety
- Search and Rescue
- Metering, Utility boxes

Issue: 1742

In the effort to improve our products, we reserve the right to make changes judged to be necessary.

CONFIDENTIAL AND PROPRIETARY INFORMATION

This document contains confidential and proprietary information of Pulse Electronics, Inc. (Pulse) and is protected by copyright, trade secret and other state and federal laws. Its receipt or possession does not convey any rights to reproduce, disclose its contents, or to manufacture, use or sell anything it may describe. Reproduction, disclosure or use without specific written authorization of Pulse is strictly forbidden.

For more information:

Pulse Worldwide Headquarters  
15255 Innovation Drive #100  
San Diego, CA 92128  
USA  
Tel: 1-858-674-8100

Pulse/Larsen Antennas  
18110 SE 34<sup>th</sup> St Bldg 2 Suite 250  
Vancouver, WA 98683  
USA  
Tel: 1-360-944-7551

Europe Headquarters  
Pulse GmbH & Do, KG  
Zeppelinstrasse 15  
Herrenberg, Germany  
Tel: 49 7032 7806 0

Pulse (Suzhou) Wireless Products Co, Inc.  
99 Huo Ju Road(#29 Bldg,4<sup>th</sup> Phase  
Suzhou New District  
Jiangsu Province, Suzhou 215009 PR China  
Tel: 86 512 6807 9998



**Description:** GNSS/2x LTE/0, 1x, 2x or 3x WiFi  
Direct Mount

**Series:** RAZORBACK

**PART NUMBER:** RAZ32011DM, RAZ32012DM, RAZ42111DM,  
RAZ42112DM, RAZ52211DM, RAZ52212DM, RAZ62311DM, RAZ62312DM

**ELECTRICAL SPECIFICATIONS**

Antenna Type	Monopole, measured on Ø1.02m (40") ground plane
Frequency (2x LTE)	644-960/1710-2700 MHz
Frequency (1x, 2x or 3x WiFi)	2400-2500/4900-5925 MHz
Nominal Impedance	50 Ω
VSWR	2:1
Radiation Pattern	Omni
HPBW / Vertical Plane (LTE, 644-960)	42°
HPBW / Vertical Plane (LTE, 1710-2700)	31°
HPBW / Vertical Plane (WIFI, 2400-2500)	25°
HPBW / Vertical Plane (WIFI, 4900-5925)	20°
Polarization	Vertical
Average Peak Gain (LTE, 644-960) (LTE, 1710-2700)	4.6/4.9 dBi
Average Peak Gain (WIFI, 2400-2500) (WIFI, 4900-5925)	6/6.6 dBi
Isolation (LTE1 to LTE2)	<-13
Isolation (WiFi1/2, WiF2/3 & WiFi1/3)	<-13
Average Efficiency (LTE)	67 %
Average Efficiency (WiFi)	57 %
Power Withstanding	45 W
GNSS Beidou-GPS-Glonass	
Frequency	1561.098±2.046,1575.42±1.023,1602.5625±4 MHz
VSWR	2:1
Nominal Impedance	50 Ω
Gain (Radiating element)	1 dBic +/- 1dB
Gain (LNA gain)	30 dB +/- 2 dB
Polarization	RHCP

Issue: 1742P

In the effort to improve our products, we reserve the right to make changes judged to be necessary.

CONFIDENTIAL AND PROPRIETARY INFORMATION

This document contains confidential and proprietary information of Pulse Electronics, Inc. (Pulse) and is protected by copyright, trade secret and other state and federal laws. Its receipt or possession does not convey any rights to reproduce, disclose its contents, or to manufacture, use or sell anything it may describe. Reproduction, disclosure or use without specific written authorization of Pulse is strictly forbidden.



**Description:** GNSS/2x LTE/0, 1x, 2x or 3x WiFi  
Direct Mount

**Series:** RAZORBACK

**PART NUMBER:** RAZ32011DM, RAZ32012DM, RAZ42111DM,  
RAZ42112DM, RAZ52211DM, RAZ52212DM, RAZ62311DM, RAZ62312DM

### ELECTRICAL SPECIFICATIONS

Out of Band Rejection	960MHz >65 dB, 1710MHz >60 dB, 2170MHz >65 dB, 2400MHz >65 dB
Noise Figure	< 2.4dB
Operating Voltage	3.3 - 5 Vdc ± 0.5 V
Current Consumption	< 11 mA

### MECHANICAL SPECIFICATIONS

Length/Height/Width	195.1mm (7.68")/92.6 (3.65")/88.5mm (3.48")
Weight	856 g (1.9 lbs)
Antenna Color / Material	Black or White / PC/ABS, UV protected
Cable / Connector	2x LTE, 5.2m (17') LMR-195/SMA-Male 1x, 2x or 3x WiFi, 5.2m (17') LMR-195/RP-SMA-Male GNSS, 5.2m (17') RG-174/SMA-Male
Mounting Configuration	Ø22.3mm (7/8") Hole required

### ENVIRONMENTAL SPECIFICATIONS

Operating Temperature	-40/+85° C
Ingress Protection	IP67
RoHS Compliant	Yes

### OTHER SPECIFICATIONS

Total cable assembly loss for 5.2m (17') LMR-195 @ 850MHz	2.1 dB
Total cable assembly loss for 5.2m (17') RG-174 @ 1575MHz	6.0 dB
Total cable assembly loss for 5.2m (17') LMR-195 @ 1930MHz	3.2 dB
Total cable assembly loss for 5.2m (17') LMR-195 @ 2500MHz	3.7 dB
Total cable assembly loss for 5.2m (17') LMR-195 @ 2450MHz	3.6 dB
Total cable assembly loss for 5.2m (17') LMR-195 @ 5350MHz	5.5 dB

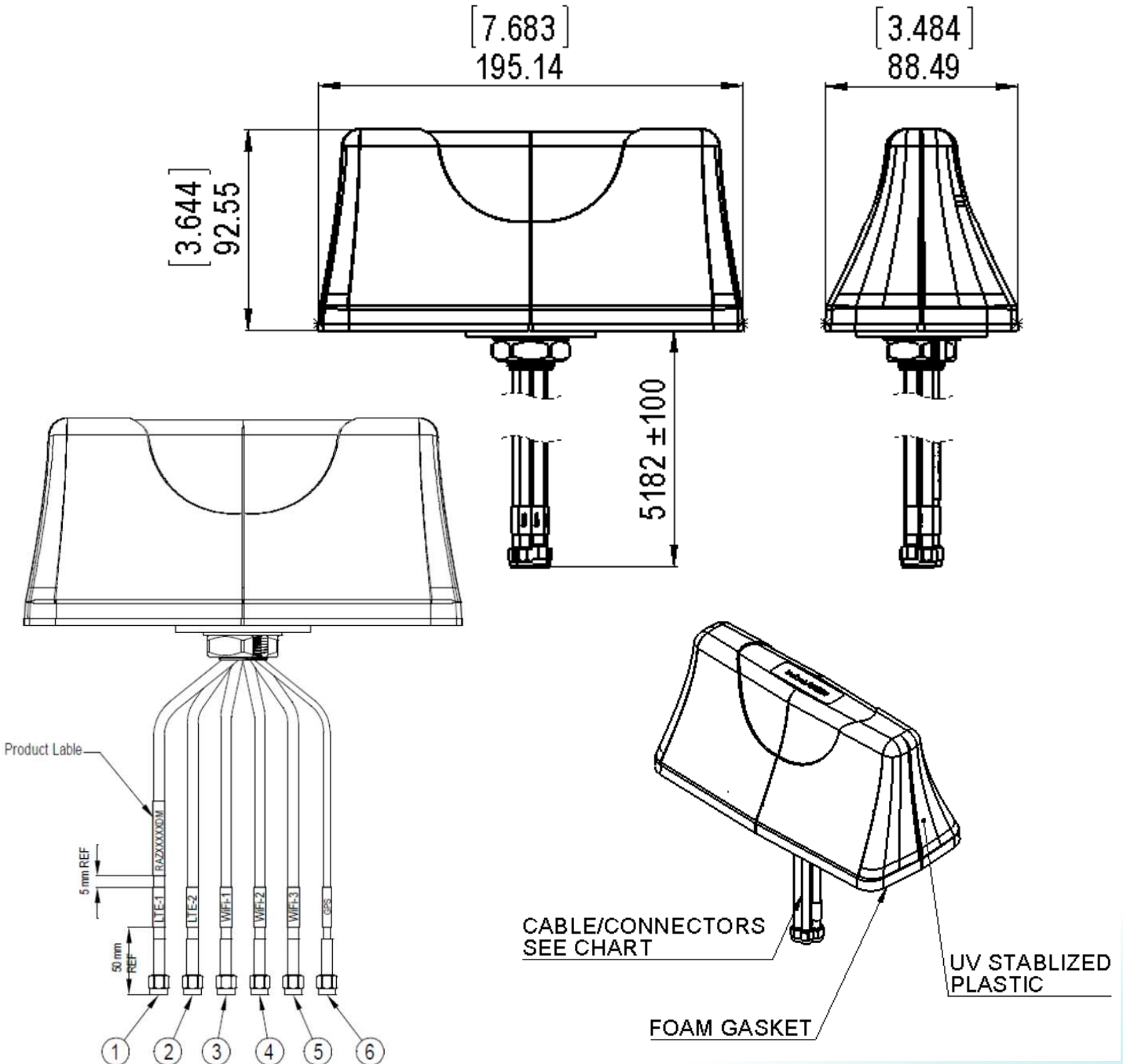
Issue: 1742P

In the effort to improve our products, we reserve the right to make changes judged to be necessary.

CONFIDENTIAL AND PROPRIETARY INFORMATION

This document contains confidential and proprietary information of Pulse Electronics, Inc. (Pulse) and is protected by copyright, trade secret and other state and federal laws. Its receipt or possession does not convey any rights to reproduce, disclose its contents, or to manufacture, use or sell anything it may describe. Reproduction, disclosure or use without specific written authorization of Pulse is strictly forbidden.

MECHANICAL DRAWING



All dimensions are in mm / inches

Issue: 1742P

In the effort to improve our products, we reserve the right to make changes judged to be necessary.

CONFIDENTIAL AND PROPRIETARY INFORMATION

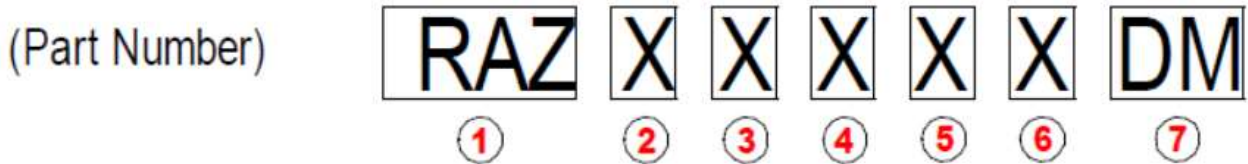
This document contains confidential and proprietary information of Pulse Electronics, Inc. (Pulse) and is protected by copyright, trade secret and other state and federal laws. Its receipt or possession does not convey any rights to reproduce, disclose its contents, or to manufacture, use or sell anything it may describe. Reproduction, disclosure or use without specific written authorization of Pulse is strictly forbidden.

Series: RAZORBACK

PART NUMBER: RAZ32011DM, RAZ32012DM, RAZ42111DM,  
RAZ42112DM, RAZ52211DM, RAZ52212DM, RAZ62311DM, RAZ62312DM

MECHANICAL DRAWING

Vehicular Multiband Antenna with Direct Mount



<span style="border: 1px solid black; border-radius: 50%; padding: 2px 5px;">1</span>	Product ID: RAZORBACK
<span style="border: 1px solid black; border-radius: 50%; padding: 2px 5px;">2</span>	Total Number of Cable leads
<span style="border: 1px solid black; border-radius: 50%; padding: 2px 5px;">3</span>	Total Number of LTE Cable Leads
<span style="border: 1px solid black; border-radius: 50%; padding: 2px 5px;">4</span>	Total Number of WiFi Cable Leads
<span style="border: 1px solid black; border-radius: 50%; padding: 2px 5px;">5</span>	Total Number of GPS Cable Leads
<span style="border: 1px solid black; border-radius: 50%; padding: 2px 5px;">6</span>	The Color of the Plastic Housing 1=Black; 2= White
<span style="border: 1px solid black; border-radius: 50%; padding: 2px 5px;">7</span>	Mounting: Direct Mount; 7/8" Hole Required

RAZXXXXDM		CABLE	CABLE LENGTH	CONNECTOR
1	LTE-1 Cable Assy	LMR195	5181 mm / 204" / 17 FT	SMA Male
2	LTE-2 Cable Assy			RP-SMA Male
3	WiFi-1 Cable Assy			
4	WiFi-2 Cable Assy			
5	WiFi-3 Cable Assy	RG-174		SMA Male
6	GPS Cable Assy			

All dimensions are in mm / inches

Issue: 1742P

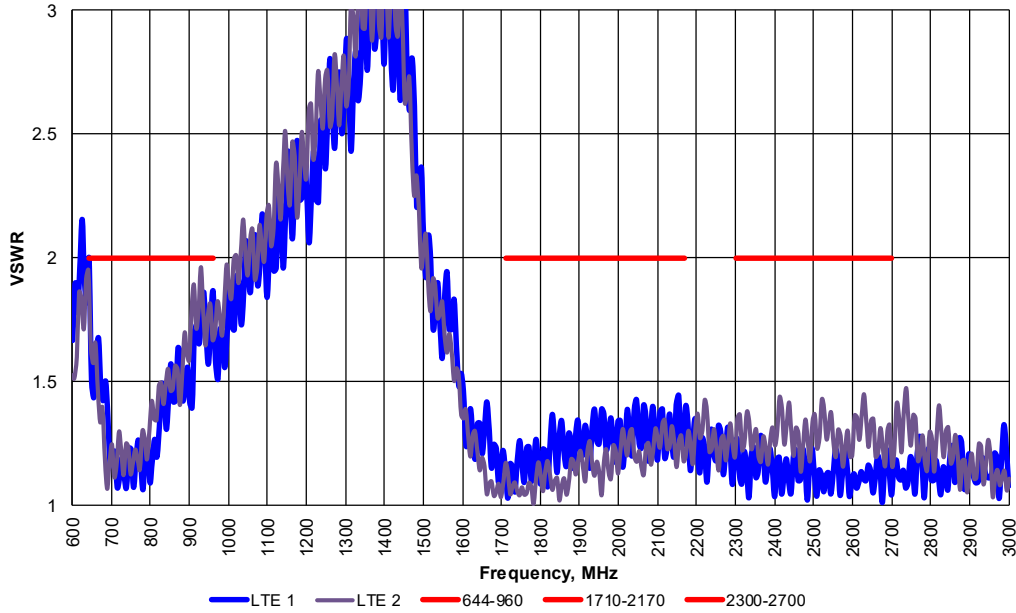
In the effort to improve our products, we reserve the right to make changes judged to be necessary.

CONFIDENTIAL AND PROPRIETARY INFORMATION

This document contains confidential and proprietary information of Pulse Electronics, Inc. (Pulse) and is protected by copyright, trade secret and other state and federal laws. Its receipt or possession does not convey any rights to reproduce, disclose its contents, or to manufacture, use or sell anything it may describe. Reproduction, disclosure or use without specific written authorization of Pulse is strictly forbidden.

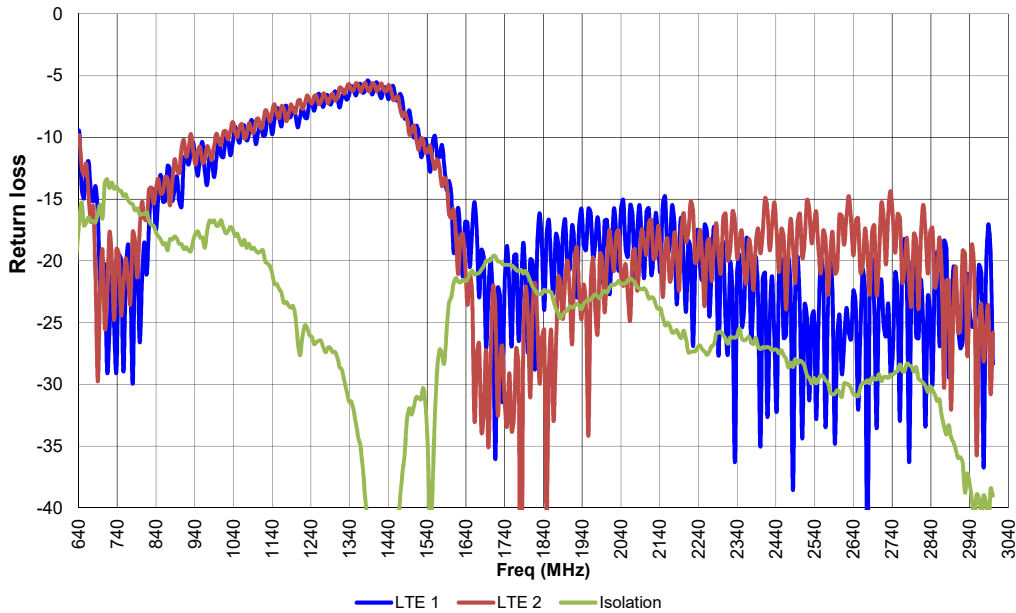
CHARTS

VSWR vs Frequency  
RAZ62311DM Measured with 17' cables on Ø40" GP  
Measured at Pulse, USA - July 07, 2017



LTE 1 & 2  
Measured with 5.2m  
(17') cable

Return loss vs Frequency  
RAZ62311DM Measured with 17' cables on Ø40" GP  
Measured at Pulse, USA - July 07, 2017



LTE 1 & 2  
Measured with 5.2m  
(17') cable

Issue: 1742P

In the effort to improve our products, we reserve the right to make changes judged to be necessary.

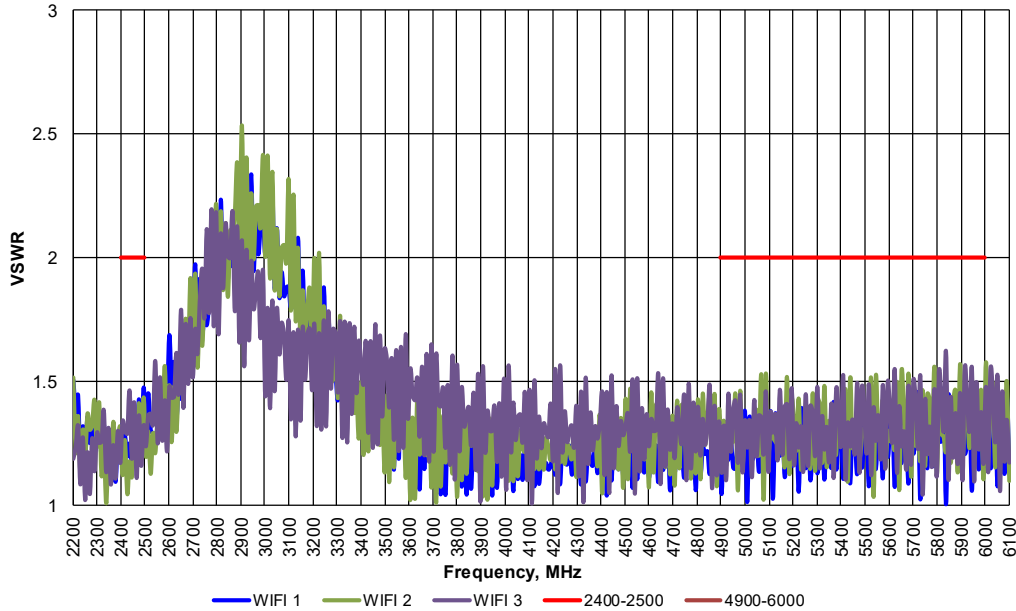
CONFIDENTIAL AND PROPRIETARY INFORMATION

This document contains confidential and proprietary information of Pulse Electronics, Inc. (Pulse) and is protected by copyright, trade secret and other state and federal laws. Its receipt or possession does not convey any rights to reproduce, disclose its contents, or to manufacture, use or sell anything it may describe. Reproduction, disclosure or use without specific written authorization of Pulse is strictly forbidden.

CHARTS

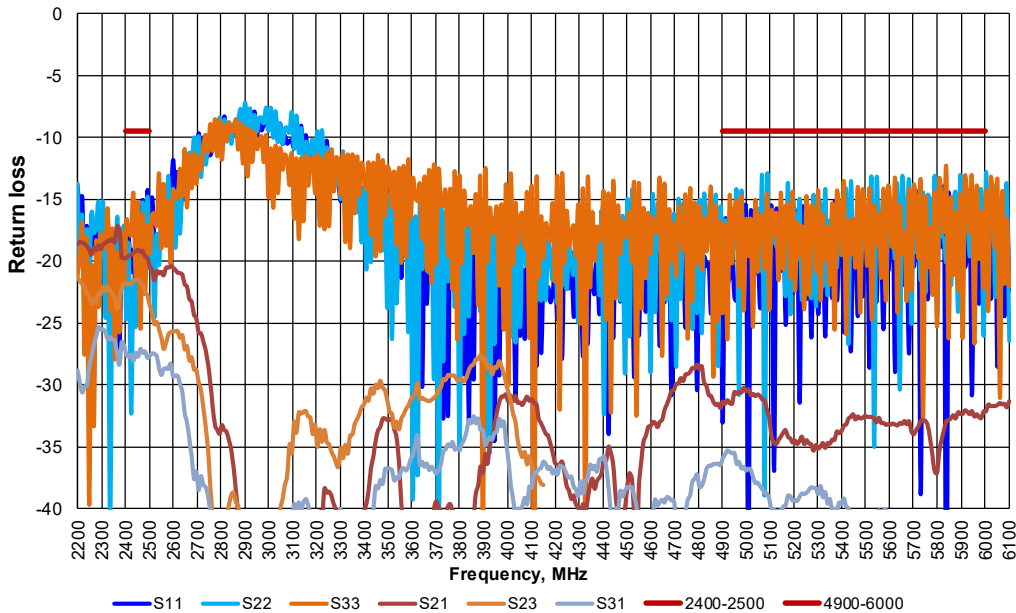
WiFi 1, 2 & 3  
Measured with 5.2m  
(17') cable

VSWR vs Frequency  
RAZ62311DM Measured with 17' cables on Ø40" GP (WiFi 1, 2 & 3)  
Measured at Pulse, USA - July 07, 2017



WiFi 1, 2 & 3  
Measured with 5.2m  
(17') cable

Return loss vs Frequency  
RAZ62311DM Measured with 17' cables on Ø40" GP (WiFi 1, 2 & 3)  
Measured at Pulse, USA - July 07, 2017



Issue: 1742P

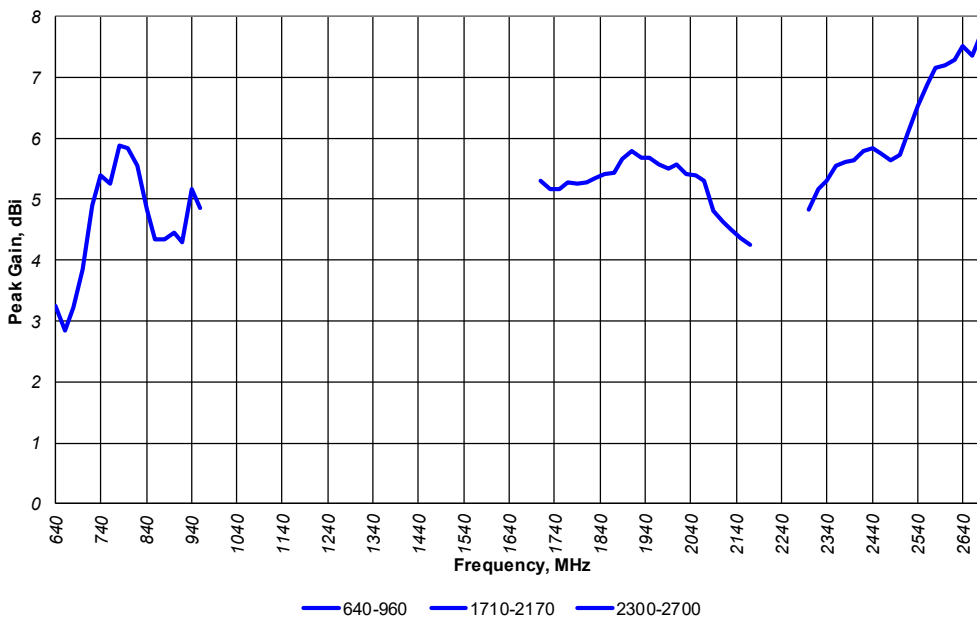
In the effort to improve our products, we reserve the right to make changes judged to be necessary.

CONFIDENTIAL AND PROPRIETARY INFORMATION

This document contains confidential and proprietary information of Pulse Electronics, Inc. (Pulse) and is protected by copyright, trade secret and other state and federal laws. Its receipt or possession does not convey any rights to reproduce, disclose its contents, or to manufacture, use or sell anything it may describe. Reproduction, disclosure or use without specific written authorization of Pulse is strictly forbidden.

CHARTS

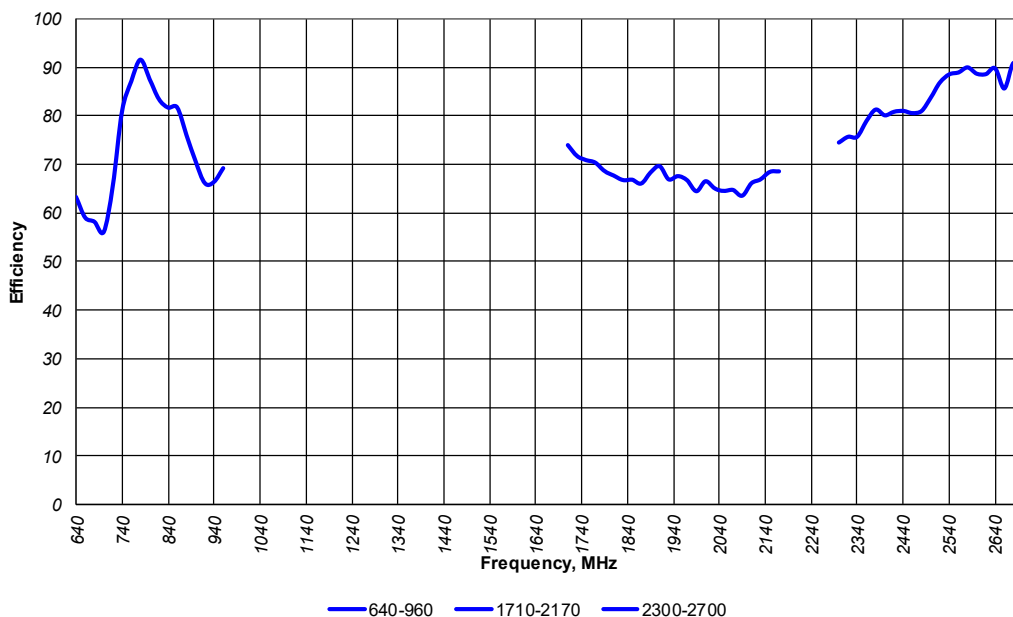
Peak Gain vs Frequency  
RAZ62311DM Measured with 4" cables on Ø40" GP (LTE 1)  
Measured at Pulse, USA - Aug 04, 2017



LTE 1

Measured with 102mm (4") cable

Efficiency vs Frequency  
RAZ62311DM Measured with 4" cables on Ø40" GP (LTE 1)  
Measured at Pulse, USA - aUG 04, 2017



LTE 1

Measured with 102mm (4") cable

Issue: 1742P

In the effort to improve our products, we reserve the right to make changes judged to be necessary.

CONFIDENTIAL AND PROPRIETARY INFORMATION

This document contains confidential and proprietary information of Pulse Electronics, Inc. (Pulse) and is protected by copyright, trade secret and other state and federal laws. Its receipt or possession does not convey any rights to reproduce, disclose its contents, or to manufacture, use or sell anything it may describe. Reproduction, disclosure or use without specific written authorization of Pulse is strictly forbidden.

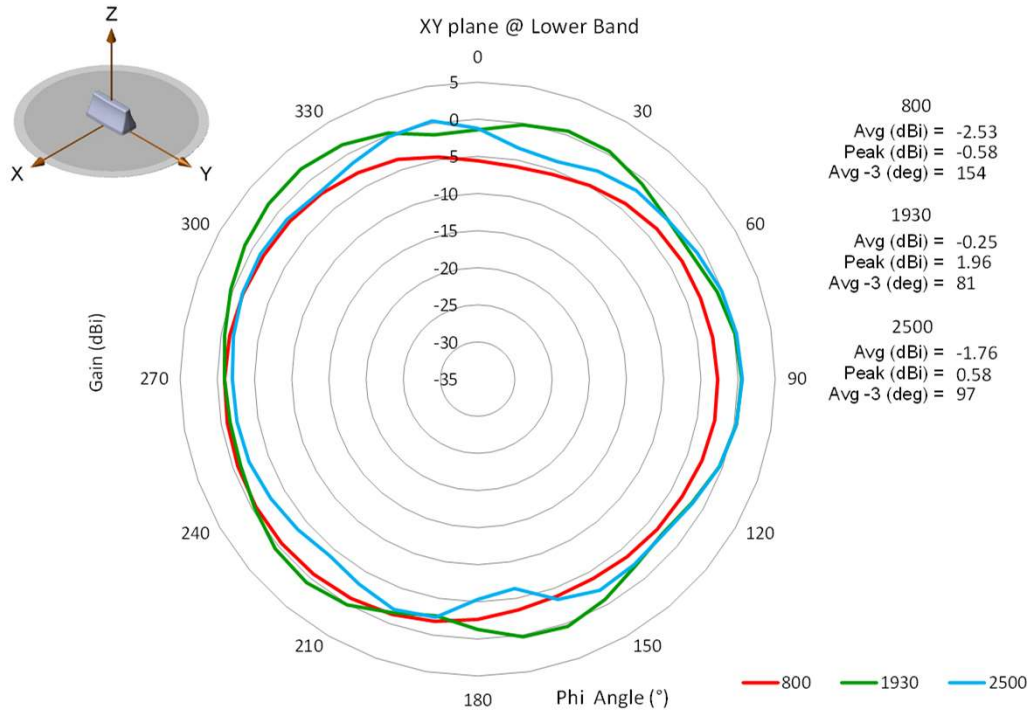


Series: RAZORBACK

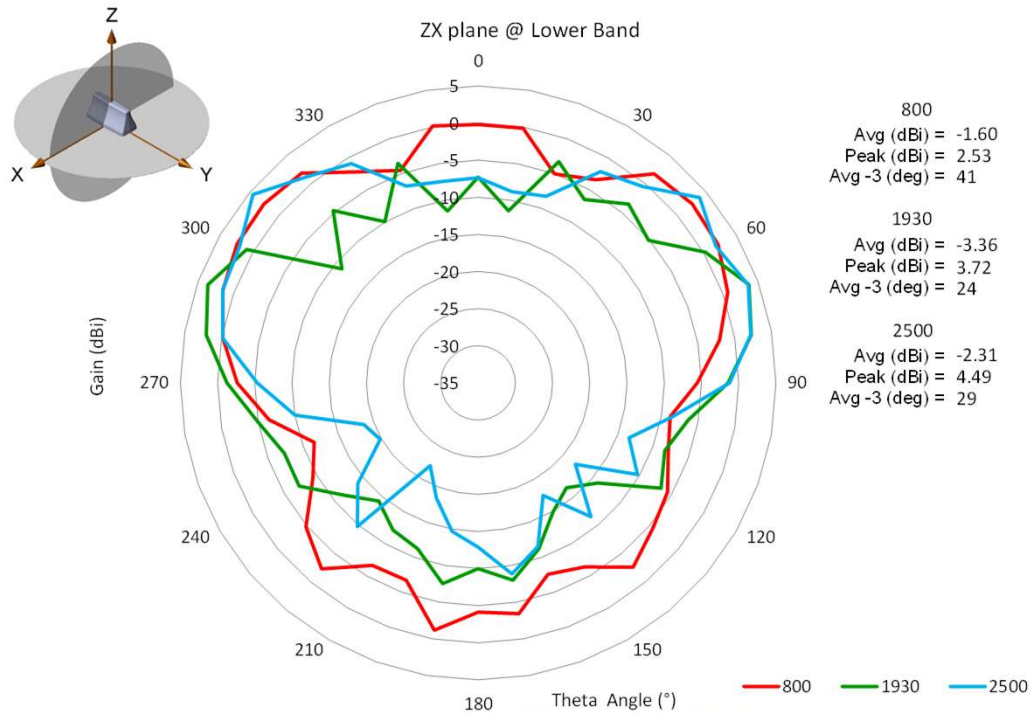
PART NUMBER: RAZ32011DM, RAZ32012DM, RAZ42111DM,  
RAZ42112DM, RAZ52211DM, RAZ52212DM, RAZ62311DM, RAZ62312DM

CHARTS

LTE 1  
Measured with  
102mm (4") cable



LTE 1  
Measured with  
102mm (4") cable



Issue: 1742P

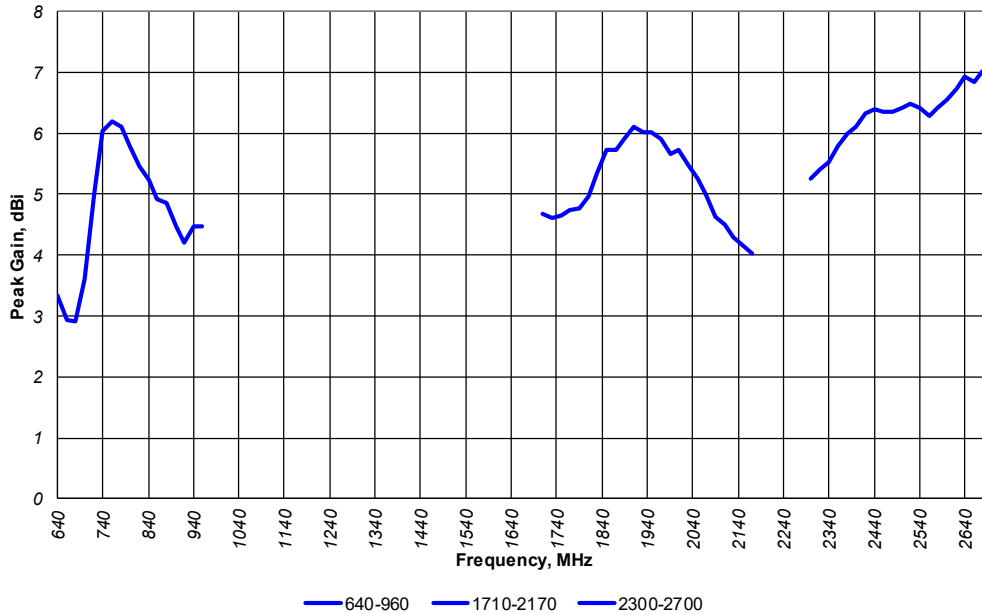
In the effort to improve our products, we reserve the right to make changes judged to be necessary.

CONFIDENTIAL AND PROPRIETARY INFORMATION

This document contains confidential and proprietary information of Pulse Electronics, Inc. (Pulse) and is protected by copyright, trade secret and other state and federal laws. Its receipt or possession does not convey any rights to reproduce, disclose its contents, or to manufacture, use or sell anything it may describe. Reproduction, disclosure or use without specific written authorization of Pulse is strictly forbidden.

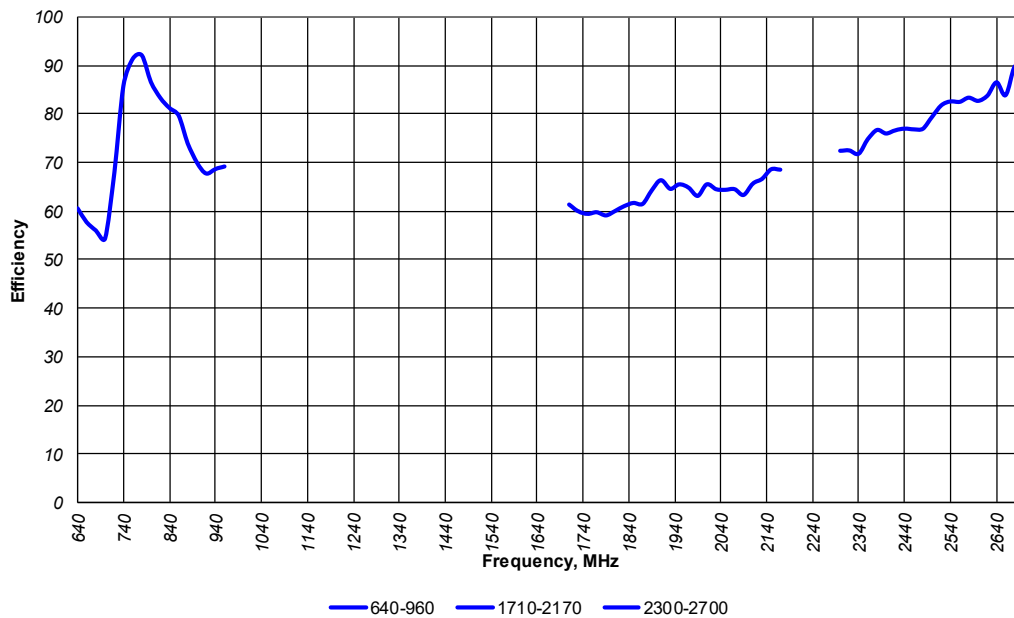
CHARTS

Peak Gain vs Frequency  
RAZ62311DM Measured with 4" cables on Ø40" GP (LTE 2)  
Measured at Pulse, USA - Aug 04, 2017



LTE 2  
Measured with  
102mm (4") cable

Efficiency vs Frequency  
RAZ62311DM Measured with 4" cables on Ø40" GP (LTE 2)  
Measured at Pulse, USA - aUG 04, 2017



LTE 2  
Measured with  
102mm (4") cable

Issue: 1742P

In the effort to improve our products, we reserve the right to make changes judged to be necessary.

CONFIDENTIAL AND PROPRIETARY INFORMATION

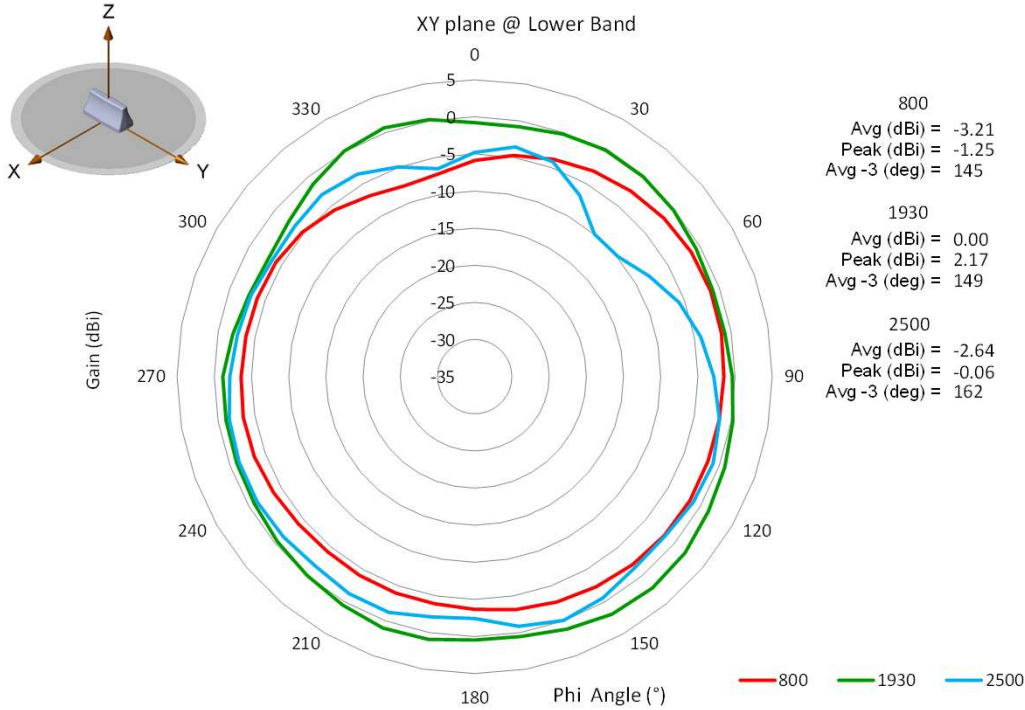
This document contains confidential and proprietary information of Pulse Electronics, Inc. (Pulse) and is protected by copyright, trade secret and other state and federal laws. Its receipt or possession does not convey any rights to reproduce, disclose its contents, or to manufacture, use or sell anything it may describe. Reproduction, disclosure or use without specific written authorization of Pulse is strictly forbidden.

Series: RAZORBACK

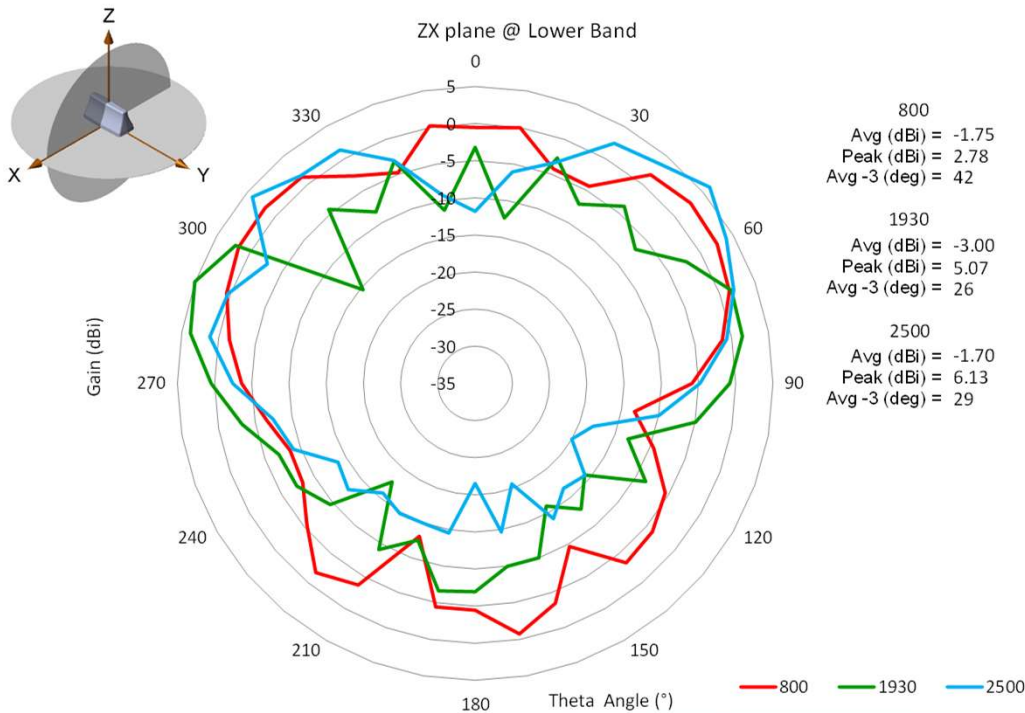
PART NUMBER: RAZ32011DM, RAZ32012DM, RAZ42111DM,  
RAZ42112DM, RAZ52211DM, RAZ52212DM, RAZ62311DM, RAZ62312DM

CHARTS

LTE 2  
Measured with  
102mm (4") cable



LTE 2  
Measured with  
102mm (4") cable



Issue: 1742P

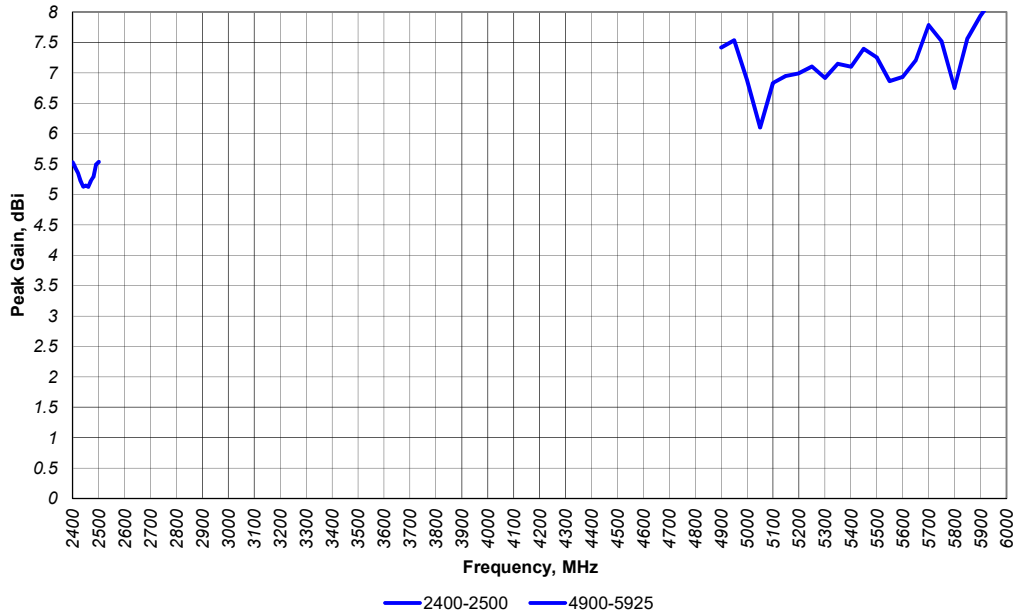
In the effort to improve our products, we reserve the right to make changes judged to be necessary.

CONFIDENTIAL AND PROPRIETARY INFORMATION

This document contains confidential and proprietary information of Pulse Electronics, Inc. (Pulse) and is protected by copyright, trade secret and other state and federal laws. Its receipt or possession does not convey any rights to reproduce, disclose its contents, or to manufacture, use or sell anything it may describe. Reproduction, disclosure or use without specific written authorization of Pulse is strictly forbidden.

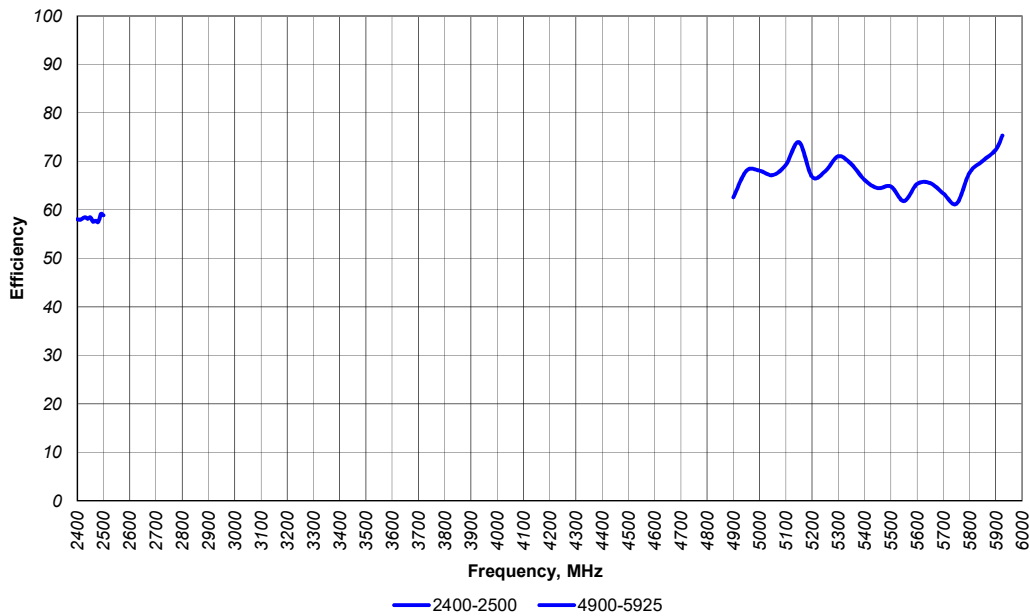
CHARTS

Peak Gain vs Frequency  
RAZ62311DM Measured with 4" cables on Ø40" GP (WiFi 1)  
Measured at Pulse, USA - Aug 04, 2017



WiFi 1  
Measured with  
102mm (4") cable

Efficiency vs Frequency  
RAZ62311DM Measured with 4" cables on Ø40" GP (WiFi 1)  
Measured at Pulse, USA - Aug 04, 2017



WiFi 1  
Measured with  
102mm (4") cable

Issue: 1742P

In the effort to improve our products, we reserve the right to make changes judged to be necessary.

CONFIDENTIAL AND PROPRIETARY INFORMATION

This document contains confidential and proprietary information of Pulse Electronics, Inc. (Pulse) and is protected by copyright, trade secret and other state and federal laws. Its receipt or possession does not convey any rights to reproduce, disclose its contents, or to manufacture, use or sell anything it may describe. Reproduction, disclosure or use without specific written authorization of Pulse is strictly forbidden.

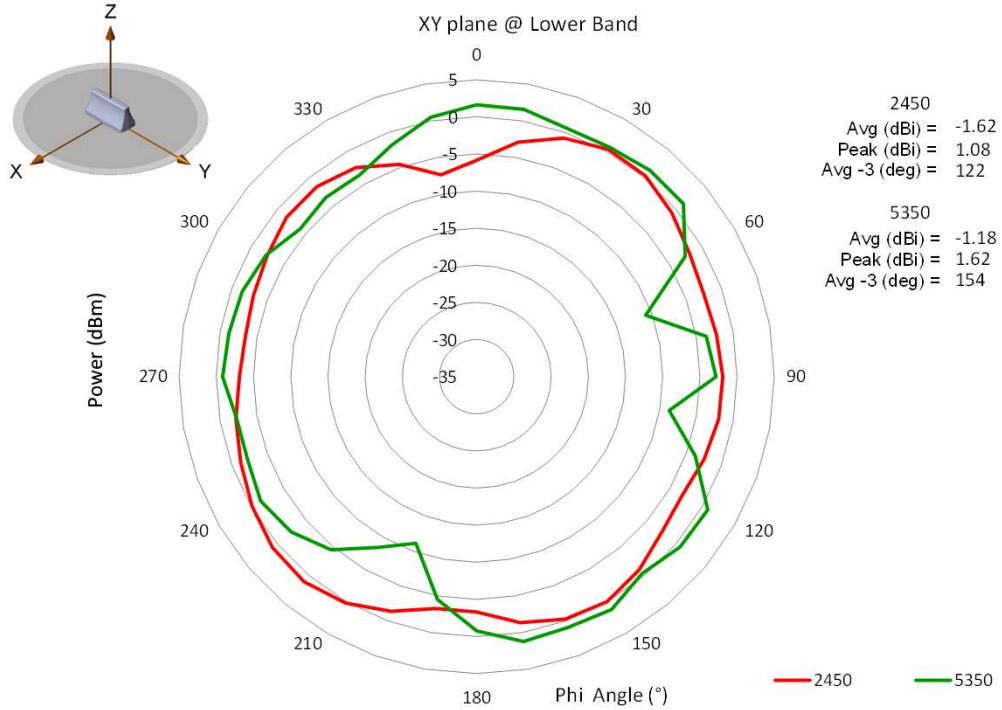
Series: RAZORBACK

PART NUMBER: RAZ32011DM, RAZ32012DM, RAZ42111DM,  
RAZ42112DM, RAZ52211DM, RAZ52212DM, RAZ62311DM, RAZ62312DM

CHARTS

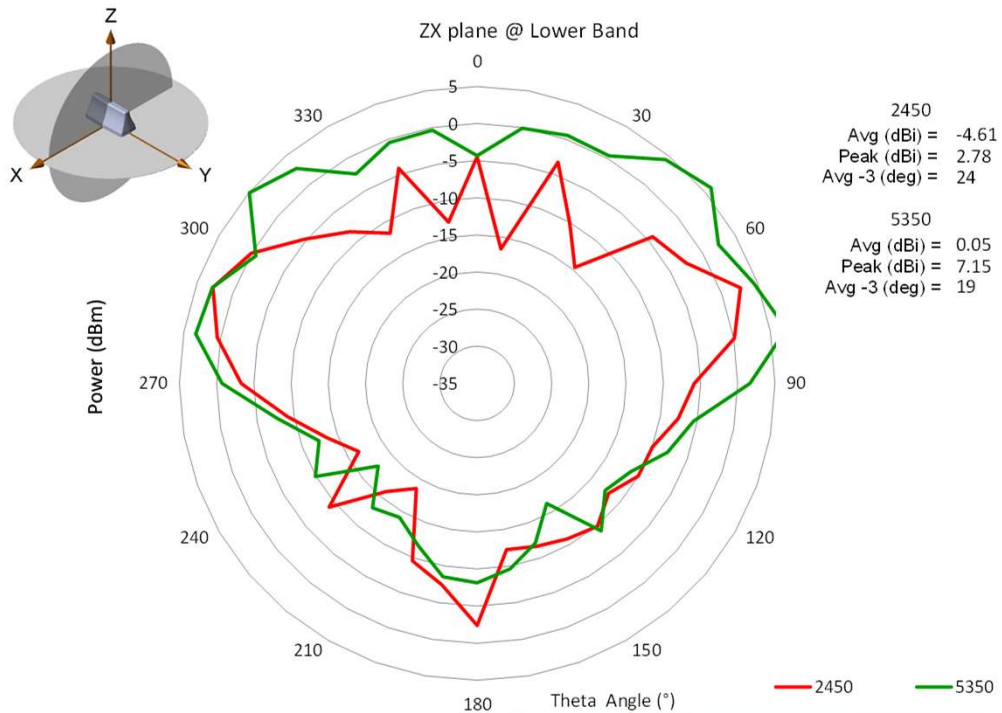
WiFi 1

Measured with 102mm (4") cable



WiFi 1

Measured with 102mm (4") cable



Issue: 1742P

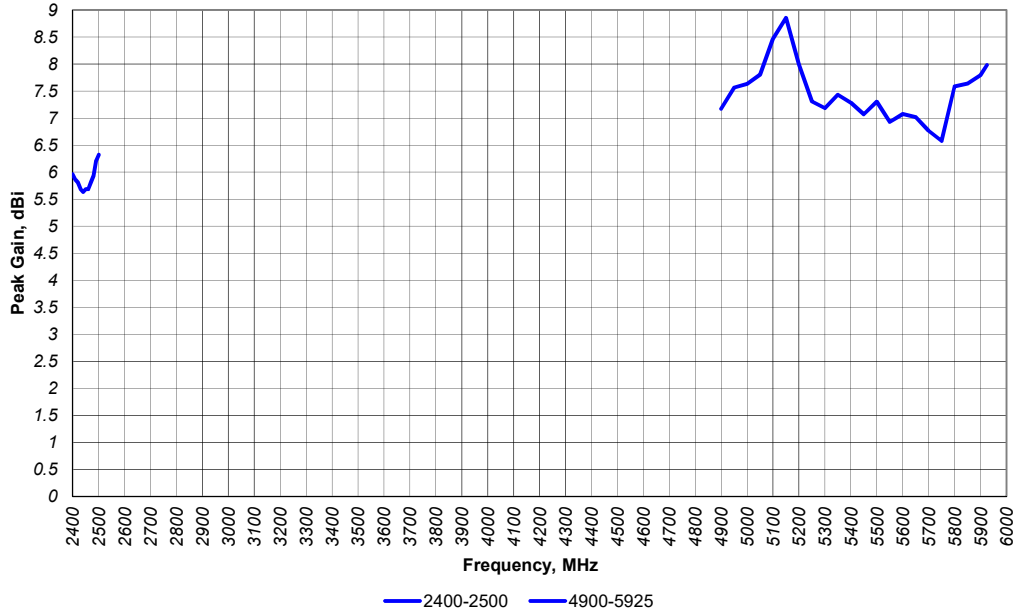
In the effort to improve our products, we reserve the right to make changes judged to be necessary.

CONFIDENTIAL AND PROPRIETARY INFORMATION

This document contains confidential and proprietary information of Pulse Electronics, Inc. (Pulse) and is protected by copyright, trade secret and other state and federal laws. Its receipt or possession does not convey any rights to reproduce, disclose its contents, or to manufacture, use or sell anything it may describe. Reproduction, disclosure or use without specific written authorization of Pulse is strictly forbidden.

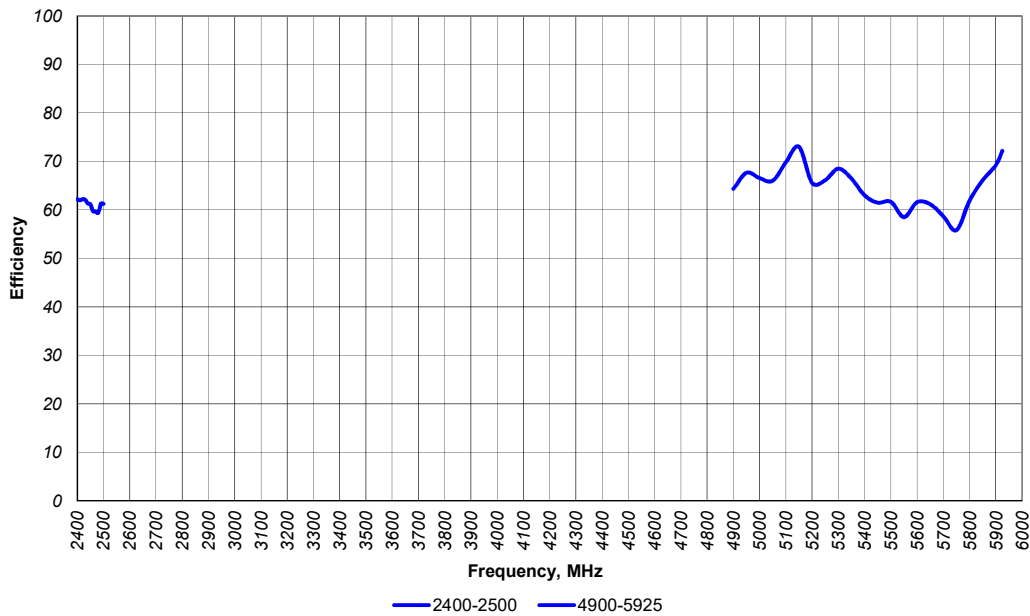
CHARTS

Peak Gain vs Frequency  
RAZ62311DM Measured with 4" cables on Ø40" GP (WiFi 2)  
Measured at Pulse, USA - Aug 04, 2017



WiFi 2  
Measured with  
102mm (4") cable

Efficiency vs Frequency  
RAZ62311DM Measured with 4" cables on Ø40" GP (WiFi 2)  
Measured at Pulse, USA - Aug 04, 2017



WiFi 2  
Measured with  
102mm (4") cable

Issue: 1742P

In the effort to improve our products, we reserve the right to make changes judged to be necessary.

CONFIDENTIAL AND PROPRIETARY INFORMATION

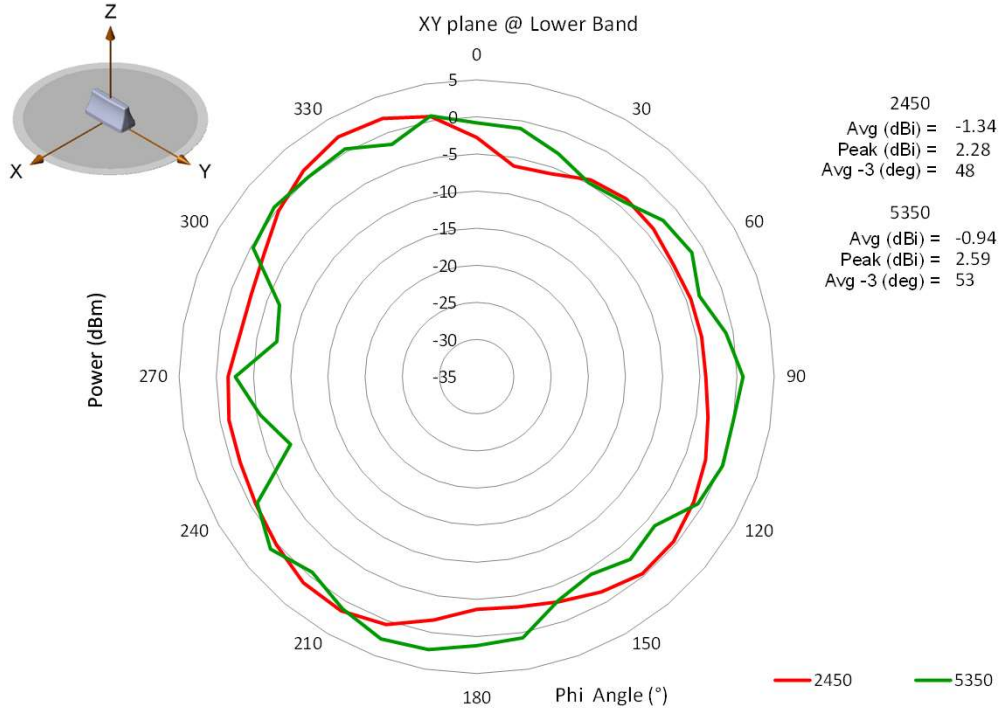
This document contains confidential and proprietary information of Pulse Electronics, Inc. (Pulse) and is protected by copyright, trade secret and other state and federal laws. Its receipt or possession does not convey any rights to reproduce, disclose its contents, or to manufacture, use or sell anything it may describe. Reproduction, disclosure or use without specific written authorization of Pulse is strictly forbidden.

Series: RAZORBACK

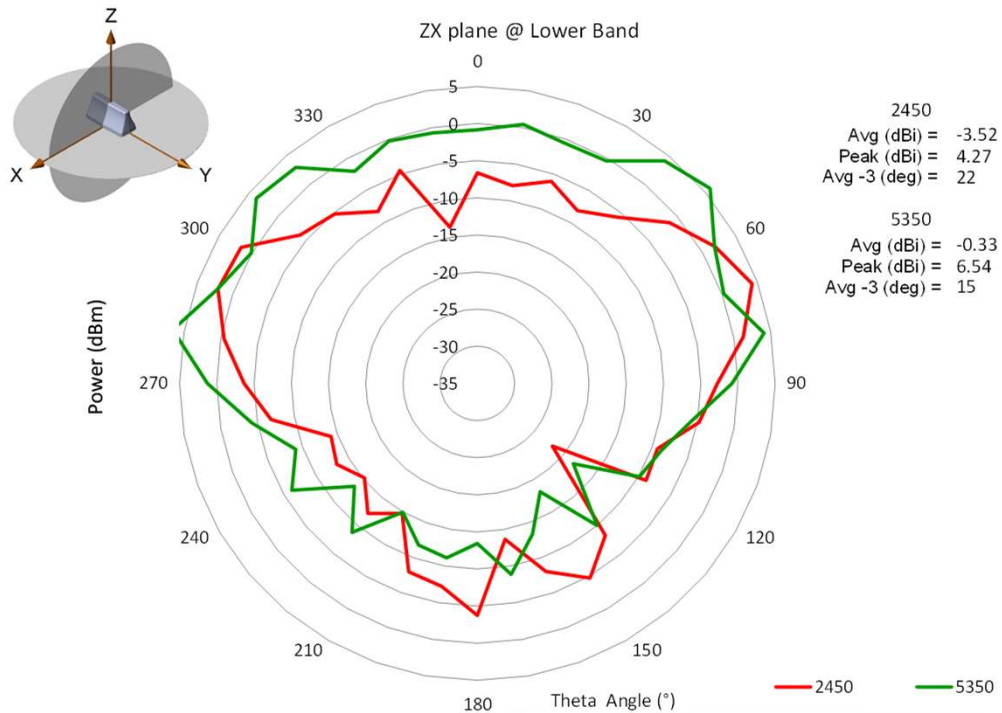
PART NUMBER: RAZ32011DM, RAZ32012DM, RAZ42111DM,  
RAZ42112DM, RAZ52211DM, RAZ52212DM, RAZ62311DM, RAZ62312DM

CHARTS

WiFi 2  
Measured with  
102mm (4") cable



WiFi 2  
Measured with  
102mm (4") cable



Issue: 1742P

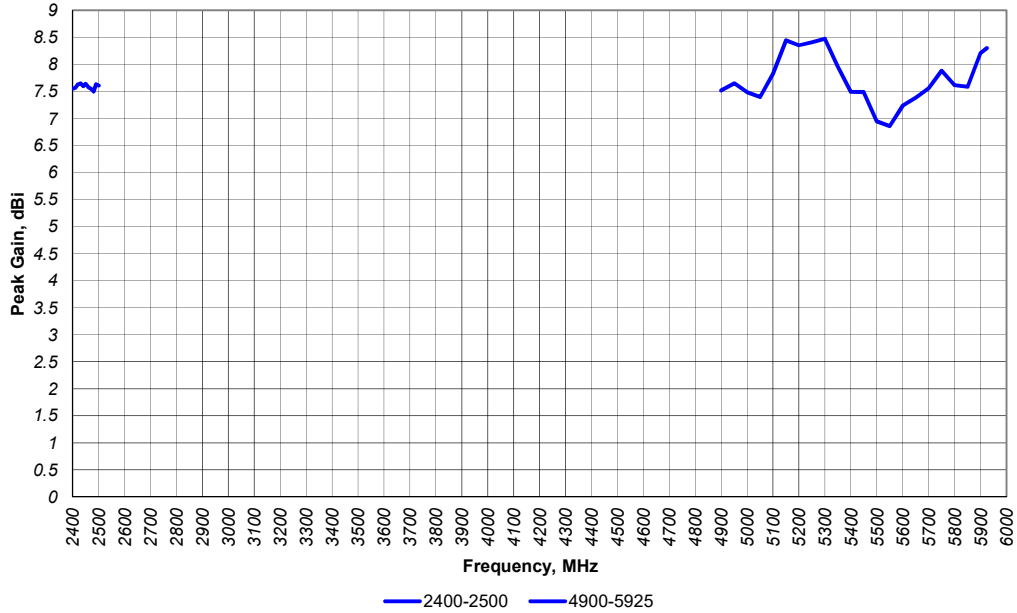
In the effort to improve our products, we reserve the right to make changes judged to be necessary.

CONFIDENTIAL AND PROPRIETARY INFORMATION

This document contains confidential and proprietary information of Pulse Electronics, Inc. (Pulse) and is protected by copyright, trade secret and other state and federal laws. Its receipt or possession does not convey any rights to reproduce, disclose its contents, or to manufacture, use or sell anything it may describe. Reproduction, disclosure or use without specific written authorization of Pulse is strictly forbidden.

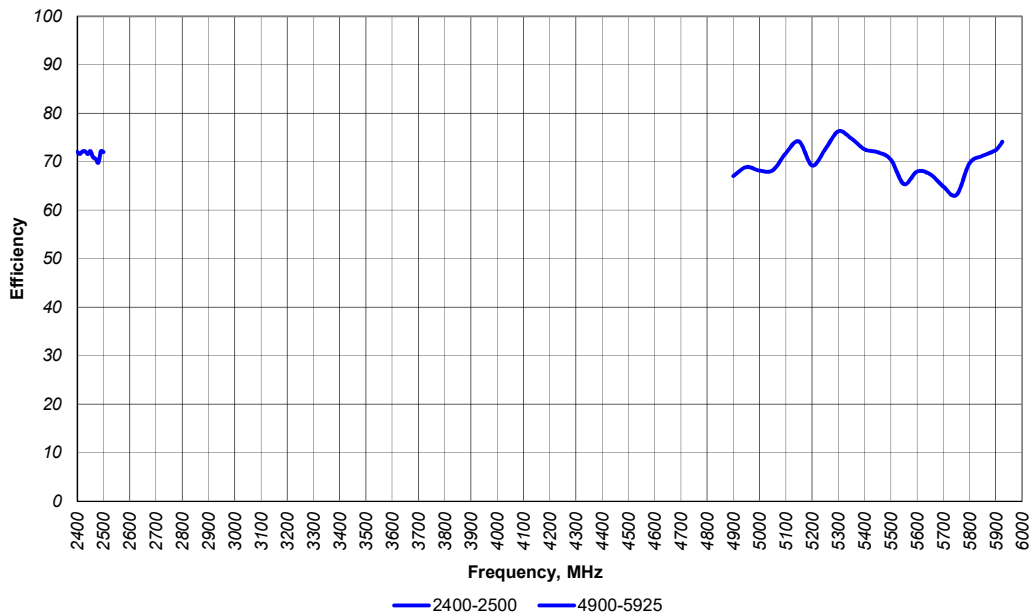
CHARTS

Peak Gain vs Frequency  
RAZ62311DM Measured with 4" cables on Ø40" GP (WiFi 3)  
Measured at Pulse, USA - Aug 04, 2017



WiFi 3  
Measured with  
102mm (4") cable

Efficiency vs Frequency  
RAZ62311DM Measured with 4" cables on Ø40" GP (WiFi 3)  
Measured at Pulse, USA - Aug 04, 2017



WiFi 3  
Measured with  
102mm (4") cable

Issue: 1742P

In the effort to improve our products, we reserve the right to make changes judged to be necessary.

CONFIDENTIAL AND PROPRIETARY INFORMATION

This document contains confidential and proprietary information of Pulse Electronics, Inc. (Pulse) and is protected by copyright, trade secret and other state and federal laws. Its receipt or possession does not convey any rights to reproduce, disclose its contents, or to manufacture, use or sell anything it may describe. Reproduction, disclosure or use without specific written authorization of Pulse is strictly forbidden.

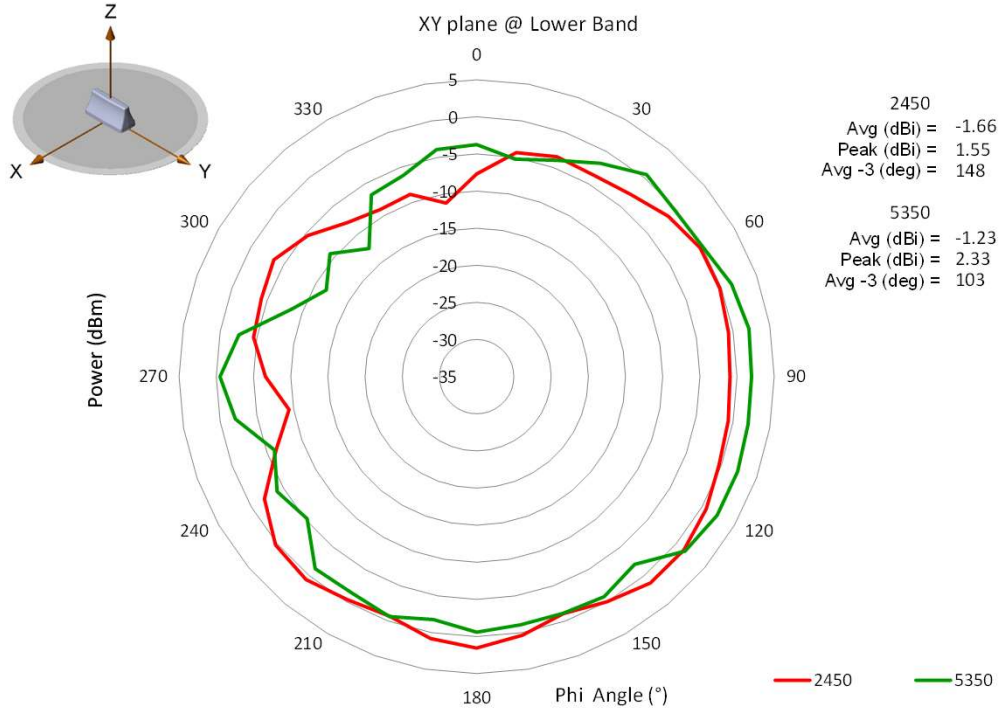


Series: RAZORBACK

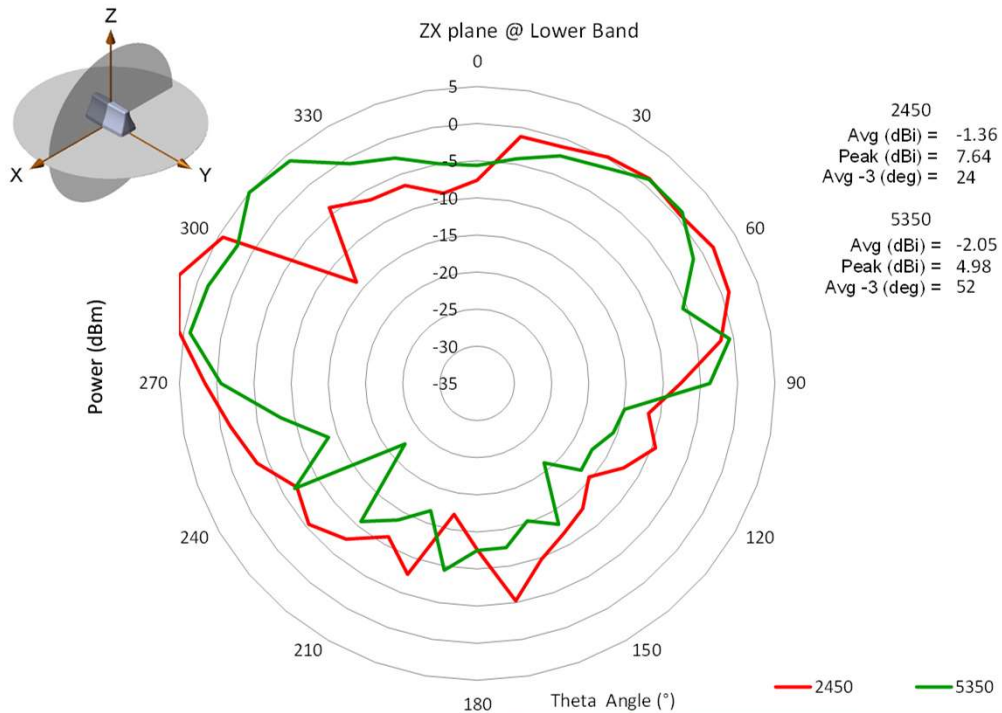
PART NUMBER: RAZ32011DM, RAZ32012DM, RAZ42111DM,  
RAZ42112DM, RAZ52211DM, RAZ52212DM, RAZ62311DM, RAZ62312DM

CHARTS

WiFi 3  
Measured with  
102mm (4") cable



WiFi 3  
Measured with  
102mm (4") cable



Issue: 1742P

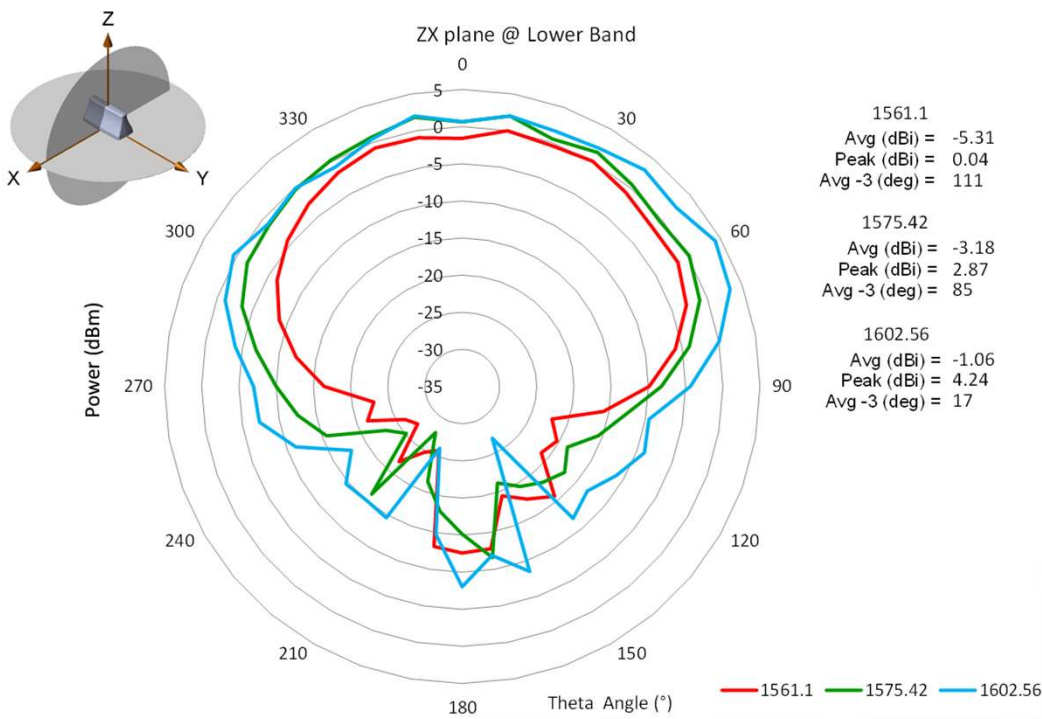
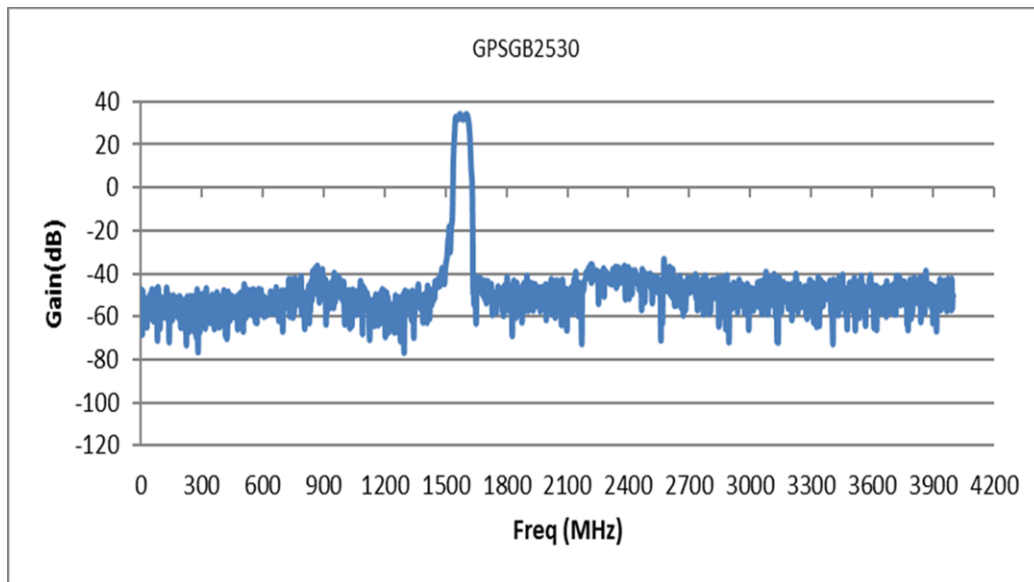
In the effort to improve our products, we reserve the right to make changes judged to be necessary.

CONFIDENTIAL AND PROPRIETARY INFORMATION

This document contains confidential and proprietary information of Pulse Electronics, Inc. (Pulse) and is protected by copyright, trade secret and other state and federal laws. Its receipt or possession does not convey any rights to reproduce, disclose its contents, or to manufacture, use or sell anything it may describe. Reproduction, disclosure or use without specific written authorization of Pulse is strictly forbidden.

CHARTS

GNSS LNA Gain and out-of-band rejection



GNSS

Passive  
Measurement  
Measured with  
152mm (6") cable

Issue: 1742P

In the effort to improve our products, we reserve the right to make changes judged to be necessary.

CONFIDENTIAL AND PROPRIETARY INFORMATION

This document contains confidential and proprietary information of Pulse Electronics, Inc. (Pulse) and is protected by copyright, trade secret and other state and federal laws. Its receipt or possession does not convey any rights to reproduce, disclose its contents, or to manufacture, use or sell anything it may describe. Reproduction, disclosure or use without specific written authorization of Pulse is strictly forbidden.

**Description:** GNSS/2x LTE/0, 1x, 2x or 3x WiFi  
Direct Mount

**Series:** RAZORBACK

**PART NUMBER:** RAZ32011DM, RAZ32012DM, RAZ42111DM,  
RAZ42112DM, RAZ52211DM, RAZ52212DM, RAZ62311DM, RAZ62312DM

## PACKAGING

1pcs antennas per foam bag

6pcs antennas per package box

Total 6pcs antenna per package box

Package box: 558mm\*386mm\*210mm

Issue: 1742P

In the effort to improve our products, we reserve the right to make changes judged to be necessary.

CONFIDENTIAL AND PROPRIETARY INFORMATION

This document contains confidential and proprietary information of Pulse Electronics, Inc. (Pulse) and is protected by copyright, trade secret and other state and federal laws. Its receipt or possession does not convey any rights to reproduce, disclose its contents, or to manufacture, use or sell anything it may describe. Reproduction, disclosure or use without specific written authorization of Pulse is strictly forbidden.