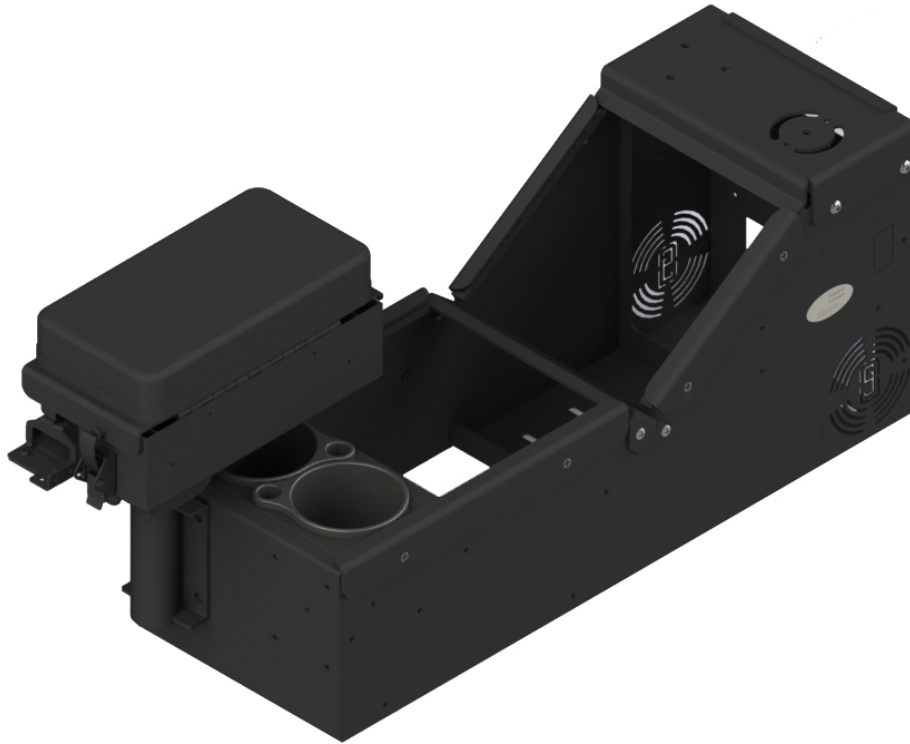


Kit: Universal Sloped Console Box with Cup Holder and Printer Armrest

Item #7170-0579-02



Included with kit

- **Universal sloped console box** (item no. 7160-0896)
- **Cup holder** (item no. 7160-0846)
- **Printer armrest** (item no. 7160-0430)

Weight

31.5 lbs / 14.3 kg - kit

Dimensions

Height: 11" / 27.9 cm

Width: 8.99" / 22.8 cm

Depth: 24.75" / 62.9 cm

Features

- Low profile, universal console with sloped front mounting area.
- Designed to work with Top Plate / Tunnel Plate and Leg Kits.
- Mounting for armrest, both on back and sides of console box.
- Mounting for the side document pocket (item no. 7160-0464).
- Mounting on both sides of console box for standard mic clips.
- Front plate of console has placement for a power distribution block or Lind shut-down timer using

pre-configured mounted holes.

- 3 faceplates and 3 filler panels included.
- Ships fully assembled (except for accessories).
- Limited lifetime warranty.

Horizontal, low profile section

- Has a consistent mounting space height of 11.5" (27.9 cm).
- Designed to house full sized devices and accessories.

Vertical, angled section

- Accommodates 1 to 2 full-sized devices (7.5" of mounting space).
- Two (2) 12 volt plug knockouts located on passenger side.
- Knockout for the USB/AUX input module (item no. 16648) or dual USB power port (item no. 15371), located on passenger side.
- Opening on sides of console boxes for audio output devices to mount behind.
- Computer can be mounted on top of the console either on the 3-bolt pattern closer to the driver for easy articulation or off-set towards the passenger on the "smiley face pattern".