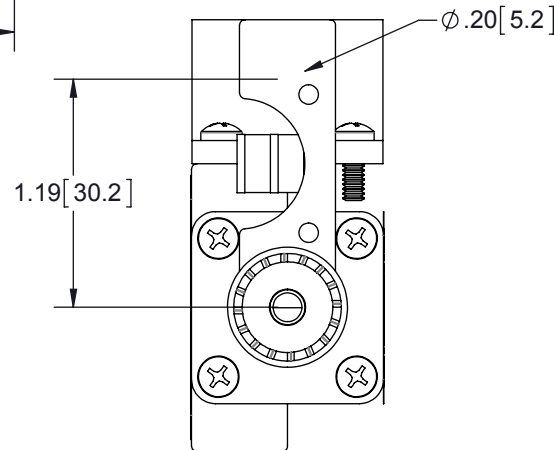
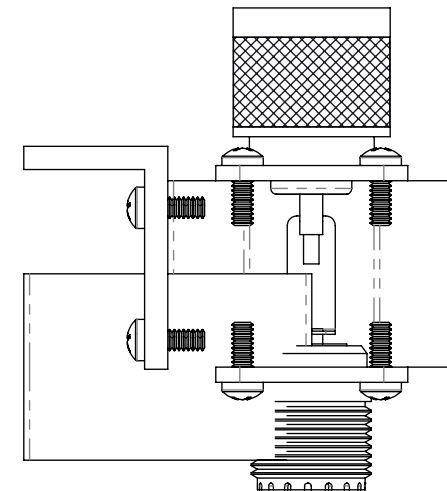
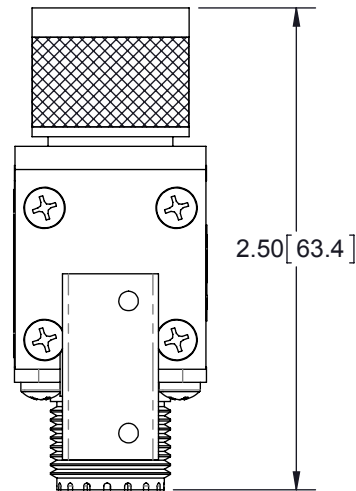
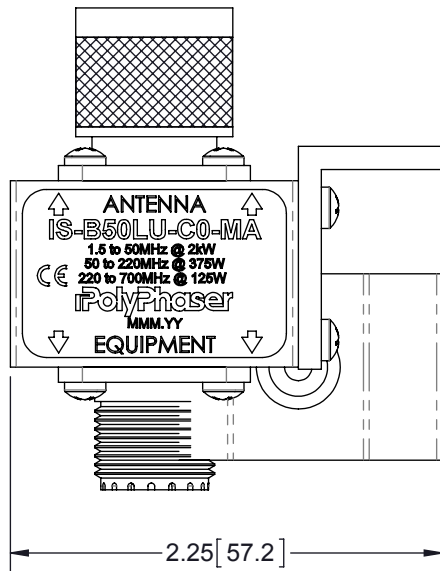


REVISIONS				
REV.	DESCRIPTION	ECN	DATE	APPROVED
G	REFER TO ECN	11391	3/25/13	KCB



## MAXIMUM CHARACTERISTICS

### APPLICATION:

BULKHEAD MOUNT

### FREQUENCY RANGE:

1.5MHz TO 700MHz

### VSWR:

$\leq 1.2:1$  @ 1.5MHz TO 700MHz

### INSERTION LOSS:

$\leq 0.1$ dB OVER FREQUENCY RANGE

### MAX POWER:

2kW @ 1.5MHz TO 50MHz

375W @ 50MHz TO 220MHz

125W @ 220MHz TO 700MHz

### THROUGHPUT ENERGY:

$\leq 10$ mJ FOR 3kA, 8/20 $\mu$ s WAVEFORM

### STORAGE/OPERATING TEMPERATURE:

-45°C TO +85°C



### VIBRATION:

1G AT 5Hz TO 100Hz

### CE COMPLIANT

CUSTOMER APPROVAL: \_\_\_\_\_ DATE: \_\_\_\_\_

ALL DIMENSIONS SHOWN ARE FOR REFERENCE ONLY.

<div>UNLESS OTHERWISE SPECIFIED LEADING DIMENSIONS ARE INCHES DIMENSIONS IN [ ] ARE MILLIMETERS</div> <div>TOLERANCES: FRACTIONS=± 1/32 .XX=± .03 ANGLES=± 1° .XXX=± .010</div> <div>NOTICE: THE INFORMATION AND DESIGN IN THIS DOCUMENT IS THE PROPERTY OF POLYPHASER CORPORATION. ALL RIGHTS RESERVED.</div> <div>THIRD-ANGLE PROJECTION</div> <div></div>	DRAWN C. GASPARINI	DATE 6/10/98	<div></div>				SHEET 1 OF 1
	ENG APPD J. VITELLO	11/5/98					SCALE 1:1
	PRODUCT MGR T. KULBIEDA	11/4/98	TITLE  CUSTOMER PRINT IS-B50LU-C0-MA CUSTOMER SPECIFICATION				
	MARKETING APPD R. MATHEUS	11/4/98					
	PROJECT NO.						
DOCUMENT NAME IS-B50LU-C0-MAC	SIZE A	CAGE 61114	PROD CAT RFP	PART NUMBER IS-B50LU-C0-MA	REV G		

THESE COMMODITIES, TECHNOLOGY OR SOFTWARE WERE EXPORTED FROM THE UNITED STATES IN ACCORDANCE WITH THE EXPORT ADMINISTRATION REGULATIONS. DIVERSION CONTRARY TO U.S. LAW PROHIBITED.